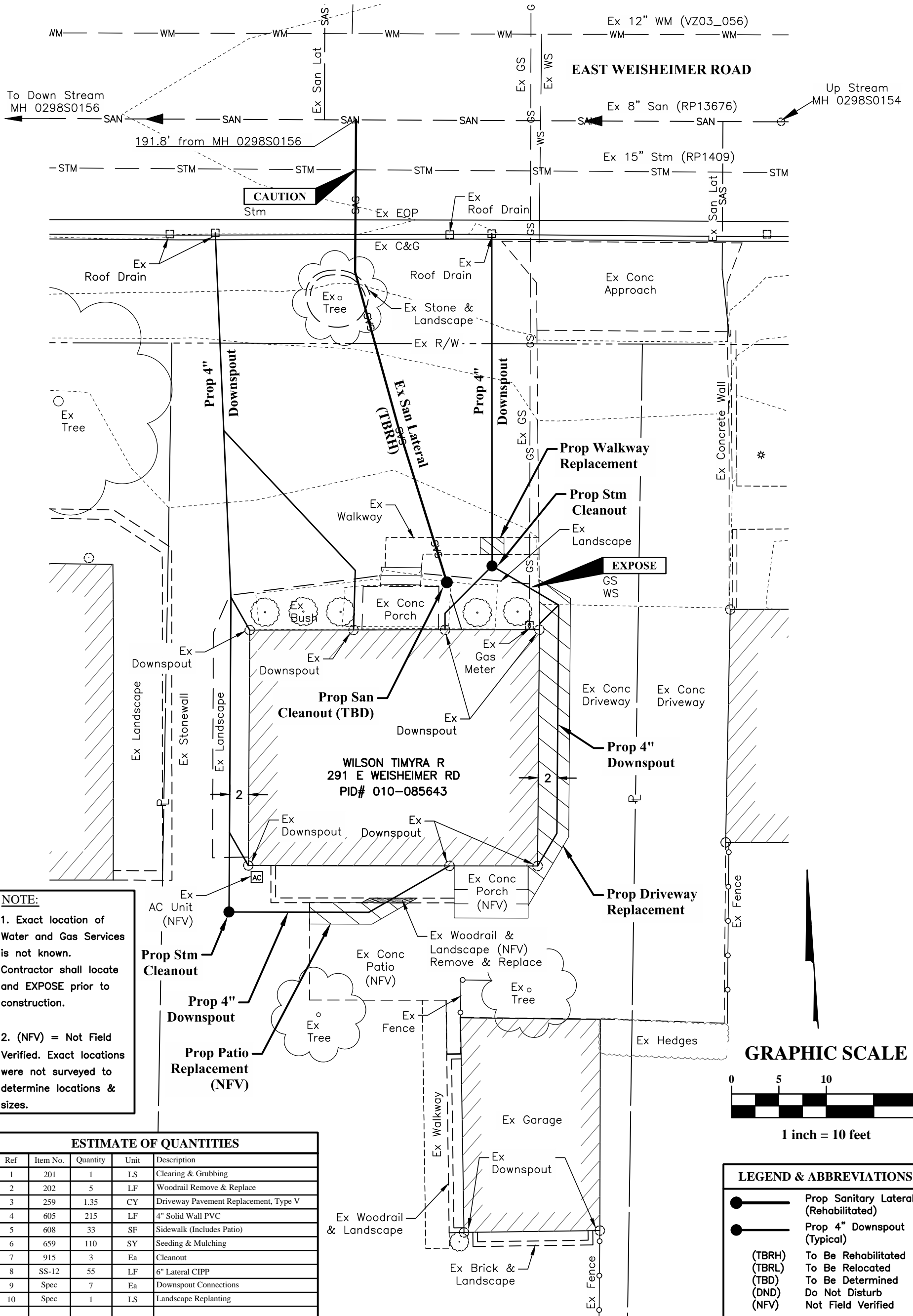


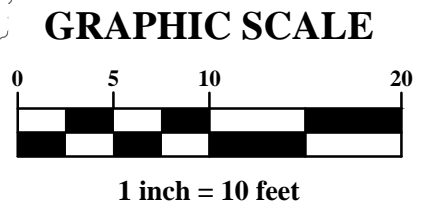
\\cmhdata01\project01\20130603\Drawings\Sanitary Plan\Weisheimer Rd\0298S0156-0298S0154 - 291 WEISHEIMER ROAD.dwg Last Saved By: csummers, 6/5/2014 2:46 PM Last Printed By: Summers, Corey, 6/5/2014 2:46 PM (No Xrefs)



NOTE:

- Exact location of Water and Gas Services is not known. Contractor shall locate and EXPOSE prior to construction.
- (NFV) = Not Field Verified. Exact locations were not surveyed to determine locations & sizes.

ESTIMATE OF QUANTITIES				
Ref	Item No.	Quantity	Unit	Description
1	201	1	LS	Clearing & Grubbing
2	202	5	LF	Woodrail Remove & Replace
3	259	1.35	CY	Driveway Pavement Replacement, Type V
4	605	215	LF	4" Solid Wall PVC
5	608	33	SF	Sidewalk (Includes Patio)
6	659	110	SY	Seeding & Mulching
7	915	3	Ea	Cleanout
8	SS-12	55	LF	6" Lateral CIPP
9	Spec	7	Ea	Downspout Connections
10	Spec	1	LS	Landscape Replanting



LEGEND & ABBREVIATIONS	
	Prop Sanitary Lateral (Rehabilitated)
	Prop 4" Downspout (Typical)
(TBRH)	To Be Rehabilitated
(TBRL)	To Be Relocated
(TBD)	To Be Determined
(DND)	Do Not Disturb
(NFV)	Not Field Verified