



Evans, Mechwart, Hambleton & Tilton, Inc.
 Engineers • Surveyors • Planners • Scientists
 5500 New Albany Road, Columbus, OH 43054
 Phone: 614.775.4500 Toll Free: 888.775.3648
 emht.com

ENCROACHMENT EASEMENT

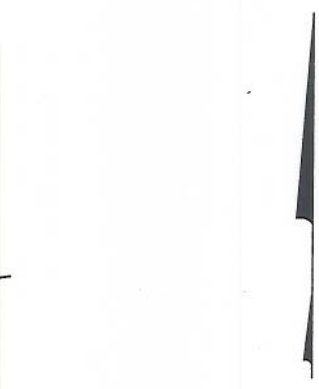
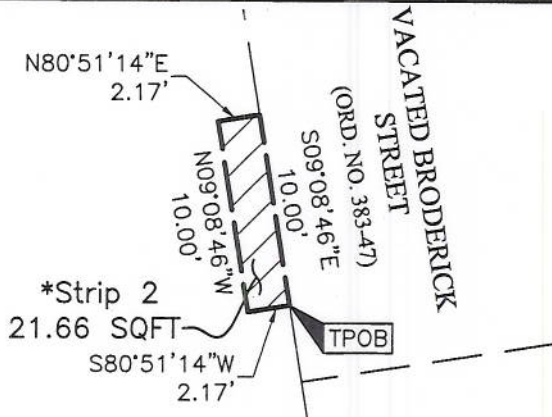
LOCATED IN
 VIRGINIA MILITARY SURVEY NUMBER 1393
 CITY OF COLUMBUS, COUNTY OF FRANKLIN, STATE OF OHIO

Date: April 3, 2017

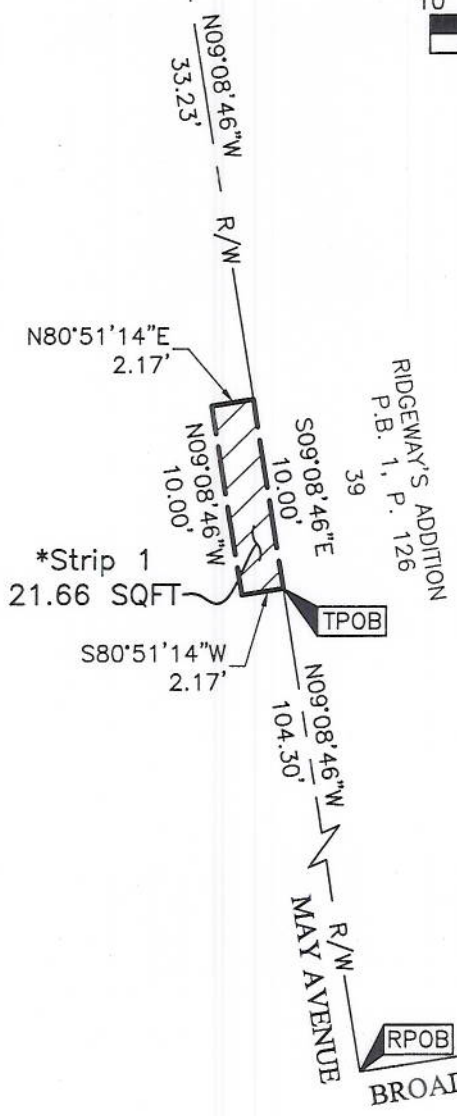
Job No: 2016-0691

Scale: 1" = 10'

1/2



*BETWEEN THE ELEVATIONS
 OF 705' and 711' NAVD88



By John C. Dodgion
 John C. Dodgion
 Professional Surveyor No. 8069

04/05/2017
 Date

J:\20160691\DWG\04SHEETS\EASEMENTS\20160691-VS-ESMT-ENCR-01.DWG plotted by DODGION, JOHN on 4/4/2017 11:22:31 AM last saved by DODGION, JOHN on 4/4/2017 11:17:38 AM Xrefs:



Evans, Mechwart, Hambleton & Tilton, Inc.
 Engineers • Surveyors • Planners • Scientists
 5500 New Albany Road, Columbus, OH 43054
 Phone: 614.775.4500 Toll Free: 888.775.3648
 emht.com

ENCROACHMENT EASEMENT

LOCATED IN

VIRGINIA MILITARY SURVEY NUMBER 1393

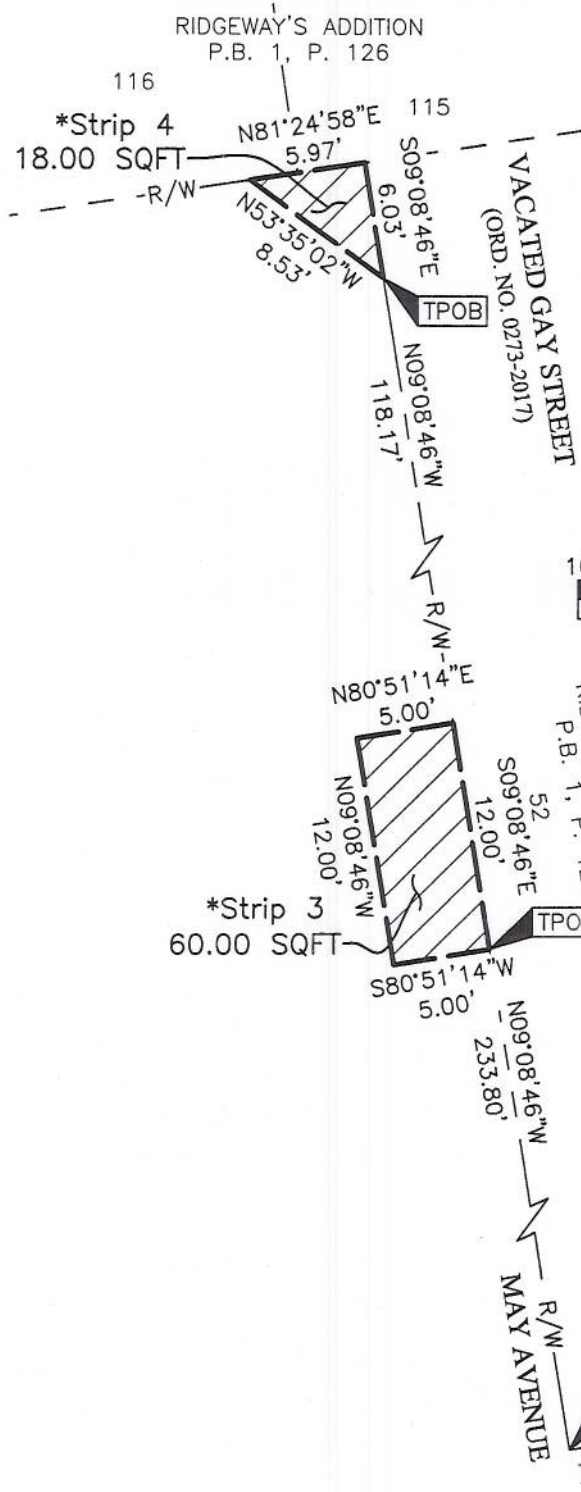
CITY OF COLUMBUS, COUNTY OF FRANKLIN, STATE OF OHIO

Date: April 3, 2017

Job No: 2016-0691

Scale: 1" = 10'

2
2



*BETWEEN THE ELEVATIONS
OF 704' and 712' NAVD88



By John C. Dodgion
 John C. Dodgion
 Professional Surveyor No. 8069

04/05/2017
 Date

U:\20160691\DWG\04SHEETS\EASEMENTS\20160691-YS-ESMT-ENCR-01.DWG plotted by DODGION, JOHN on 4/4/2017 11:22:54 AM last saved by DODGION, JOHN on 4/4/2017 11:17:38 AM
 Xrefs: