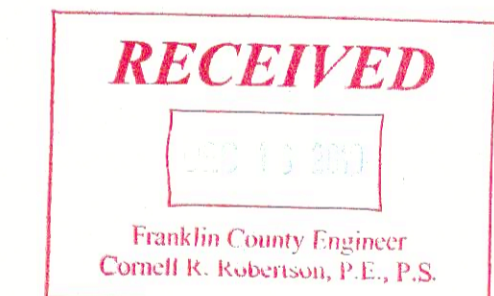
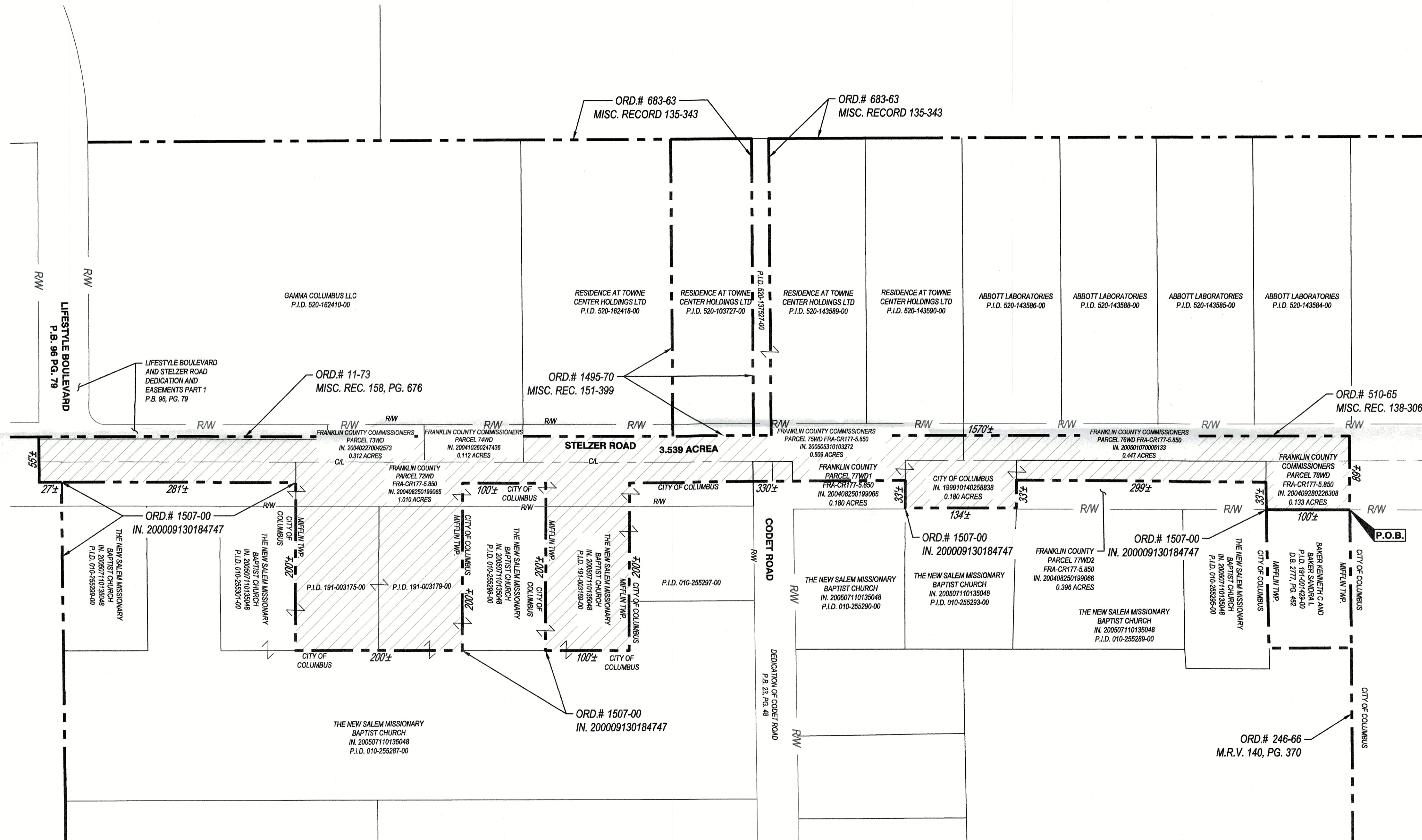
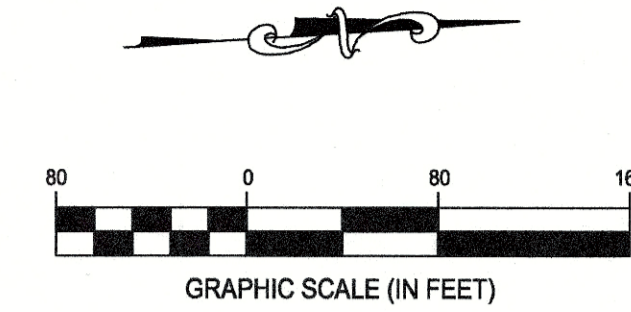


**PROPOSED ANNEXATION OF 3.539± ACRES
FROM MIFFLIN TOWNSHIP
TO CITY OF COLUMBUS**
SITUATED IN THE STATE OF OHIO, COUNTY OF FRANKLIN, TOWNSHIP OF MIFFLIN,
QUARTER TOWNSHIP 1 & 2, TOWNSHIP 1, RANGE 17, UNITED STATES MILITARY LANDS



ANNEXATION
PLAT & DESCRIPTION
ACCEPTABLE
CORNELL R. ROBERTSON, P.E., P.S.
FRANKLIN COUNTY ENGINEER
By: *[Signature]* Date: 12/16/19



Russell Koenig 12-16-2019
RUSSELL KOENIG, PS, PE, S-8358 DATE

SURVEYOR:
CESO, INC.
2800 CORPORATE EXCHANGE DR, STE 160
COLUMBUS, OH 43231

LEGEND

	EXIST. CITY OF COLUMBUS CORP. LINE
	EXIST. PARCEL LINE
	PROP. ANNEXATION CORP. LINE
	PROP. AREA TO BE ANNEXED (3.539 ACRES)

ACREAGE BREAKDOWN:

PID: 191-003169-00	0.395 ACRES
PID: 191-003179-00	0.395 ACRES
PID: 191-003175-00	0.395 ACRES
EXISTING ROW	2.354 ACRES
TOTAL	3.539 ACRES

TOTAL PERIMETER OF ANNEXATION IS 4183 FEET

CONTIGUITY NOTE:
THE TOTAL PERIMETER OF ANNEXATION AREA IS 4183 FEET, OF WHICH 2343 FEET ARE CONTIGUOUS WITH THE CITY OF COLUMBUS BY ORDINANCE NUMBER 1507-00, 760 FEET ARE CONTIGUOUS WITH THE CITY OF COLUMBUS BY ORDINANCE NUMBER 11-73, 96 FEET ARE CONTIGUOUS WITH THE CITY OF COLUMBUS BY ORDINANCE NUMBER 1495-70, 20 FEET ARE CONTIGUOUS WITH THE CITY OF COLUMBUS BY ORDINANCE NUMBER 683-63, 693 FEET ARE CONTIGUOUS WITH THE CITY OF COLUMBUS BY ORDINANCE NUMBER 510-65 AND 89 FEET ARE CONTIGUOUS WITH THE CITY OF COLUMBUS BY ORDINANCE NUMBER 246-66, GIVING 93% CONTIGUITY.

STELZER ROAD ANNEXATION	
3.539± ACRES	
CITY OF COLUMBUS	FRANKLIN COUNTY, OHIO
SCALE: 1"=80'	DATE: 12/13/2019
DESIGN: N/A	JOB NO.: 757375
DRAWN: ALB	SHEET NO.: 1 OF 1
CHECKED: TAW	