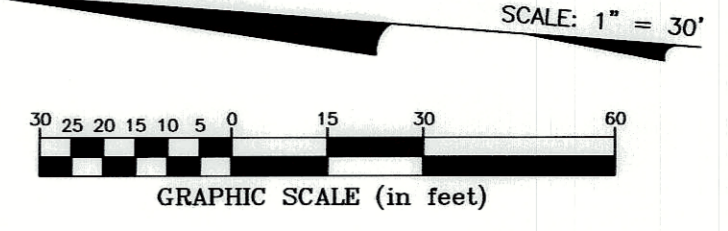
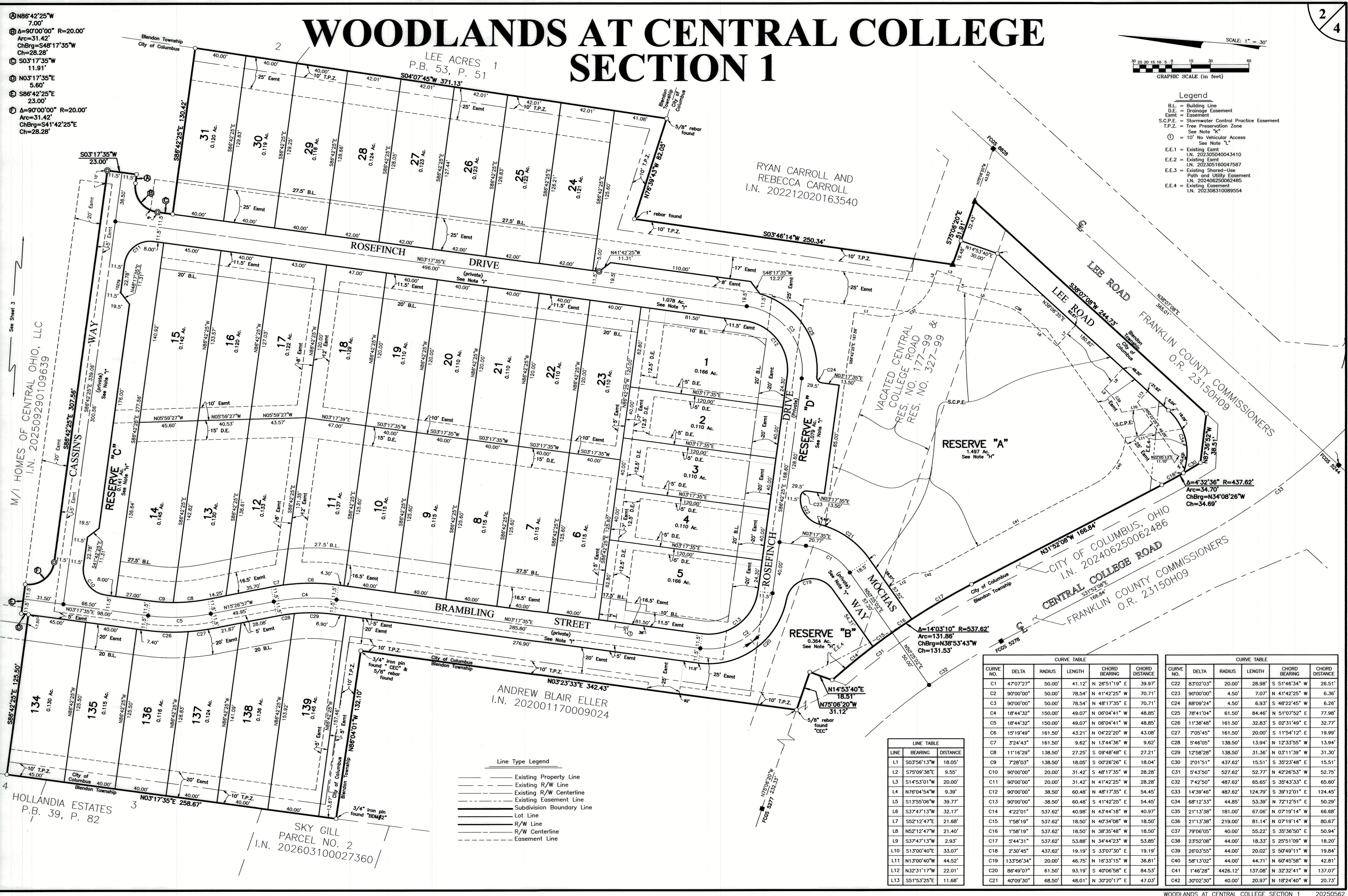


# WOODLANDS AT CENTRAL COLLEGE SECTION 1



- Legend**
- B.L. = Building Line
  - D.E. = Drainage Easement
  - Easmt = Easement
  - S.C.P.E. = Stormwater Control Practice Easement
  - T.P.Z. = Tree Preservation Zone
  - See Note "A"
  - See Note "L"
  - E.E.1 = Existing Easmt
  - E.E.2 = Existing Easmt
  - E.E.3 = Existing Shored-Use Path and Utility Easement
  - E.E.4 = Existing Easement

- Ⓐ N86°42'25"W 7.00'
- Ⓑ Δ=90°00'00" R=20.00'  
Arc=31.42'  
ChBrg=548°17'35"W  
Ch=28.28'
- Ⓒ S03°17'35"W 11.91'
- Ⓓ N03°17'35"E 5.60'
- Ⓔ S86°42'25"E 23.00'
- Ⓕ Δ=90°00'00" R=20.00'  
Arc=31.42'  
ChBrg=541°42'25"E  
Ch=28.28'



M/I HOMES OF CENTRAL OHIO, LLC  
I.N. 202509290109639

RYAN CARROLL AND REBECCA CARROLL  
I.N. 202212020163540

ANDREW BLAIR ELLER  
I.N. 202001170009024

HOLLANDIA ESTATES  
P.B. 39, P. 82

SKY GILL  
PARCEL NO. 2  
I.N. 202603100027360

- Line Type Legend**
- Existing Property Line
  - Existing R/W Line
  - Existing R/W Centerline
  - Existing Easement Line
  - Subdivision Boundary Line
  - Lot Line
  - R/W Line
  - R/W Centerline
  - Easement Line

**LINE TABLE**

LINE	BEARING	DISTANCE
L1	S03°56'13"W	18.05'
L2	S75°09'38"E	9.55'
L3	S14°53'01"W	20.00'
L4	N76°04'54"W	9.39'
L5	S13°55'06"W	39.77'
L6	S37°47'13"W	32.17'
L7	S52°12'47"E	21.68'
L8	N52°12'47"W	21.40'
L9	S37°47'13"W	2.93'
L10	S13°00'40"E	33.07'
L11	N13°00'40"W	44.52'
L12	N32°31'17"W	22.01'
L13	S51°53'25"E	11.68'

**CURVE TABLE**

CURVE NO.	DELTA	RADIUS	LENGTH	CHORD BEARING	CHORD DISTANCE
C1	47°07'27"	50.00'	41.12'	N 26°51'19" E	39.97'
C2	90°00'00"	50.00'	78.54'	N 41°42'25" W	70.71'
C3	90°00'00"	50.00'	78.54'	N 48°17'35" E	70.71'
C4	18°44'32"	150.00'	49.07'	N 06°04'41" W	48.85'
C5	18°44'32"	150.00'	49.07'	N 06°04'41" W	48.85'
C6	15°19'49"	161.50'	43.21'	N 04°22'20" W	43.08'
C7	32°44'32"	161.50'	9.62'	N 13°44'36" W	9.62'
C8	11°16'29"	138.50'	27.25'	S 09°48'48" E	27.21'
C9	7°28'03"	138.50'	18.05'	S 00°26'26" E	18.04'
C10	90°00'00"	20.00'	31.42'	S 48°17'35" W	28.28'
C11	90°00'00"	20.00'	31.42'	N 41°42'25" W	28.28'
C12	90°00'00"	38.50'	60.48'	N 48°17'35" E	54.45'
C13	90°00'00"	38.50'	60.48'	S 41°42'25" E	54.45'
C14	4°22'01"	537.62'	40.98'	N 43°44'18" W	40.97'
C15	21°13'38"	537.62'	18.50'	N 40°34'08" W	18.50'
C16	1°58'19"	537.62'	18.50'	N 38°35'48" W	18.50'
C17	5°44'31"	537.62'	53.88'	N 34°44'23" W	53.85'
C18	2°30'45"	437.62'	19.19'	S 33°07'30" E	19.19'
C19	133°56'34"	20.00'	46.75'	N 16°33'15" W	36.81'
C20	86°49'07"	61.50'	93.19'	S 40°06'58" E	84.53'
C21	40°09'30"	68.50'	48.01'	N 30°20'17" E	47.03'

**CURVE TABLE**

CURVE NO.	DELTA	RADIUS	LENGTH	CHORD BEARING	CHORD DISTANCE
C22	83°02'03"	20.00'	28.98'	S 51°46'34" W	26.51'
C23	90°00'00"	4.50'	7.07'	N 41°42'25" W	6.36'
C24	88°09'24"	4.50'	6.93'	S 46°22'45" W	6.26'
C25	78°41'04"	61.50'	84.46'	N 51°07'52" E	77.98'
C26	11°38'48"	161.50'	32.83'	S 02°31'49" E	32.77'
C27	15°19'49"	161.50'	20.00'	S 11°54'12" E	19.99'
C28	5°46'05"	138.50'	13.94'	N 12°33'55" W	13.94'
C29	12°58'28"	138.50'	31.36'	N 03°11'39" W	31.30'
C30	2°01'51"	437.62'	15.51'	S 35°23'48" E	15.51'
C31	5°43'50"	527.62'	52.77'	N 42°26'53" W	52.75'
C32	7°42'50"	487.62'	65.65'	S 35°43'33" E	65.60'
C33	14°38'46"	487.62'	124.79'	S 39°12'01" E	124.45'
C34	68°12'33"	44.85'	53.39'	N 72°12'51" E	50.29'
C35	21°13'38"	181.00'	67.06'	N 07°19'14" W	66.68'
C36	21°13'38"	219.00'	81.14'	N 07°19'14" W	80.67'
C37	79°06'05"	40.00'	55.22'	S 35°36'50" E	50.94'
C38	23°52'08"	44.00'	18.33'	S 25°51'09" W	18.20'
C39	26°03'55"	40.00'	20.02'	S 50°49'11" W	19.84'
C40	58°13'02"	44.00'	44.71'	N 60°45'58" W	42.81'
C41	1°46'28"	4426.12'	137.08'	N 32°32'41" W	137.07'
C42	30°02'30"	40.00'	20.97'	N 18°24'40" W	20.73'