

TEMPORARY EASEMENT T-7
0.574 ACRES

Situated in the State of Ohio, County of Franklin, Township of Mifflin, and located in Quarter Township 2, Township 1, Range 17, United States Military Lands, also being a part of 3.943 acres tract as described in a deed to Timothy L. Leach and Tammy L. Leach and Mildred F. Byas in Instrument No. 200505160092812 on file in the Recorder's Office of Franklin County, Ohio and being particularly described as follows:

Beginning for reference at a point at the intersection of the west right of way line of Sunbury Road and the south line of a 2.504 acre tract described in a deed to Henry A. Zehendner in Instrument No. 200607270147413 on file in the Recorder's Office of Franklin County, Ohio, said point also being the northeast corner of said Grantor's 3.943 acre tract;

Thence **S 03 degrees 18 minutes 45 seconds W** a distance of **148.31 feet** with the west right of way line of Sunbury Road and the east line of said Grantor's tract to the **TRUE POINT OF BEGINNING**;

Thence continue **S 03 degrees 18 minutes 45 seconds W** a distance of **39.20 feet** with the west right of way line of Sunbury Road and the east line of said Grantor's tract to a point;

Thence **N 46 degrees 37 minutes 10 seconds W** crossing said Grantor's tract a distance of **146.35 feet** to a point;

Thence **N 83 degrees 18 minutes 04 seconds W** a distance of **159.02 feet** to a point;

Thence **N 70 degrees 06 minutes 32 seconds W** a distance of **65.73 feet** to a point;

Thence **N 83 degrees 18 minutes 04 seconds W** a distance of **120.48 feet** to a point;

Thence **S 75 degrees 47 minutes 12 seconds W** a distance of **81.83 feet** to a point;

Thence **N 84 degrees 37 minutes 53 seconds W** a distance of **267.20 feet** to a point;

Thence **N 23 degrees 16 minutes 08 seconds E** a distance of **31.53 feet** to a point

Thence **S 84 degrees 37 minutes 53 seconds E** a distance of **252.34 feet** to a point;

Thence **N 75 degrees 47 minutes 12 seconds E** a distance of **82.19 feet** to a point;

Thence **S 83 degrees 18 minutes 04 seconds E** a distance of **129.49 feet** to a point;

Thence **S 70 degrees 06 minutes 32 seconds E** a distance of **65.73 feet** to a point;

Thence **S 83 degrees 18 minutes 04 seconds E** a distance of **165.50 feet** to a point;

Thence **S 46 degrees 37 minutes 10 seconds E** a distance of **131.06 feet** to the west right of way line of Sunbury Road and **TRUE POINT OF BEGINNING**, containing 0.574 acre of land, more or less.

The above described area contains a total of **0.574 acres** within Franklin County Auditor's Parcel Number 190-000113, which includes 0.000 acres in the present road occupied.

Grantor claims title by Instrument recorded in Instrument No. 20050516009812, in the records of Franklin County, Ohio.

Bearings used in this description are based on Ohio State Plane Coordinates, South Zone, NAD 83.

This description was prepared from existing records and does not represent a field survey.

Resource International, Inc.

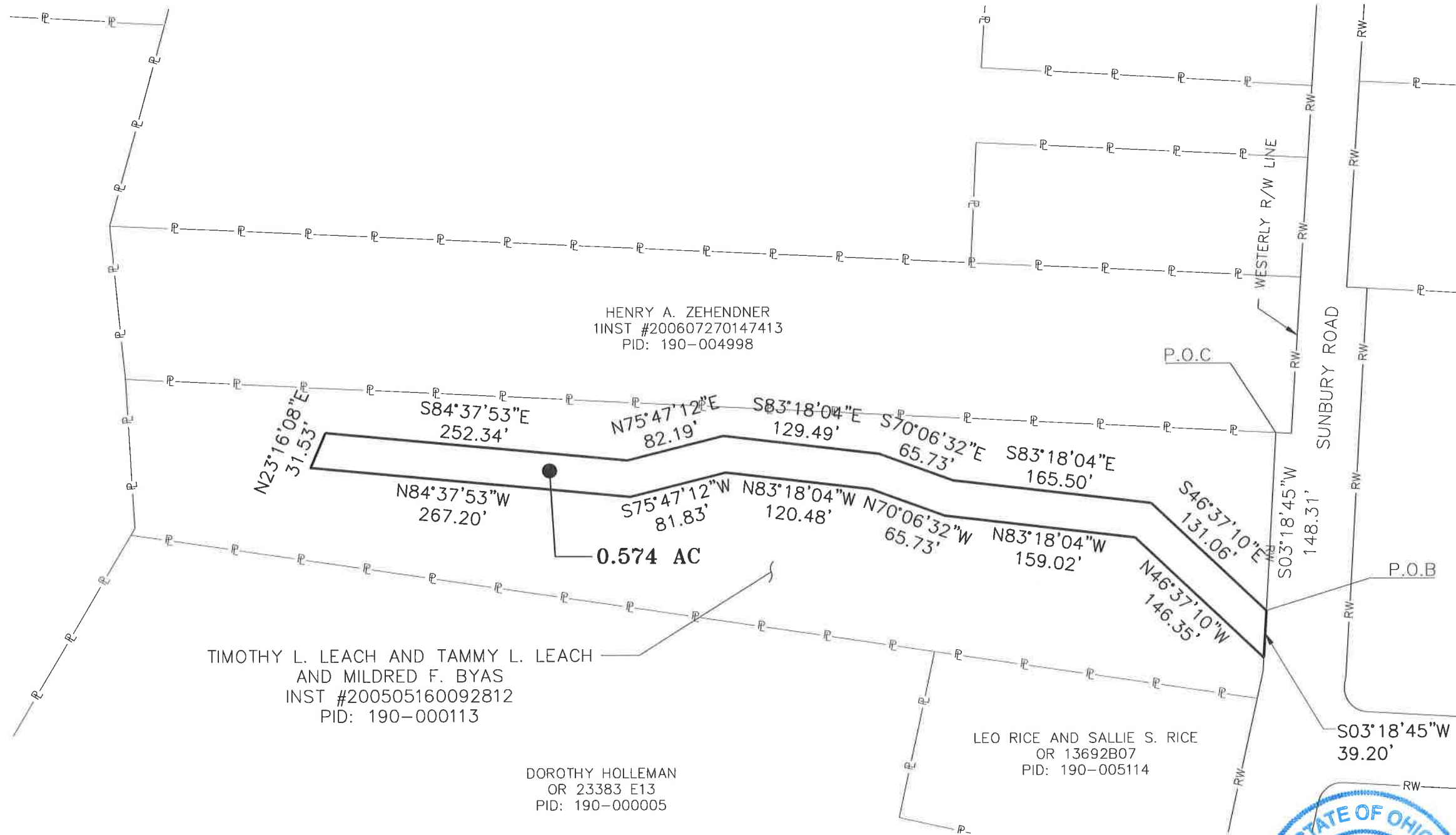
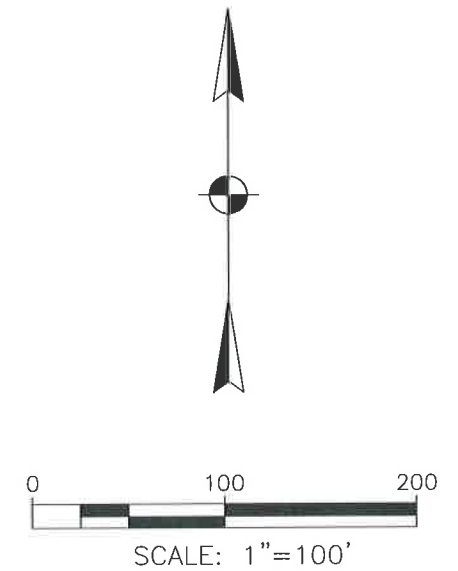
Mark S. Ward 9-13-13

Mark S. Ward, P.S.

Professional Surveyor No. S-7514



**PLAT OF 0.574 ACRES
LOCATED IN
QTR TWP2, TWP-1, R-17, USML
MIFFLIN TOWNSHIP
FRANKLIN COUNTY, OHIO**



HENRY A. ZEHENDNER
1INST #200607270147413
PID: 190-004998

TIMOTHY L. LEACH AND TAMMY L. LEACH
AND MILDRED F. BYAS
INST #200505160092812
PID: 190-000113


DOROTHY HOLLEMAN
OR 23383 E13
PID: 190-000005

LEO RICE AND SALLIE S. RICE
OR 13692B07
PID: 190-005114

NOTE:
THIS PLAT PREPARED FROM RECORD DOCUMENTS.



PLATTED BY:
RESOURCE INTERNATIONAL, INC.
Mark S. Ward 9-13-13
MARK S. WARD P.S. No., S-7514 DATE

DESCRIPTION				
TEMPORARY EASEMENT T-7				
LOCATION				
4075 SUNBURY ROAD COLUMBUS, OH				
CLIENT				
CHESTER ENGINEERS 88 E BROAD STREET				
 RESOURCE INTERNATIONAL, INC. 6350 PRESIDENTIAL GATEWAY COLUMBUS, OHIO 43231				
DRAWN BY:	CHECKED BY:	CREW CHIEF:	PROJECT No.	SHEET
EJG	MSW		W09-124	1 OF 1
SCALE:	DATE:			
	7-23-13			