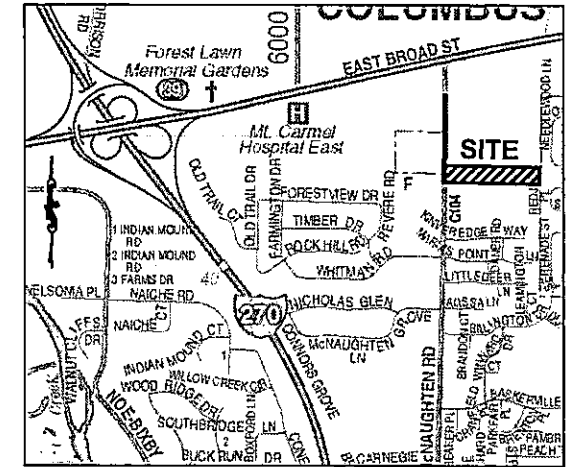


7.3± ACRE ANNEXATION FROM THE TOWNSHIP OF TRURO TO THE CITY OF COLUMBUS

Township of Truro, Franklin County, Ohio
Half Section 2, Township 2, Range 21,
Refugee Lands

ANNEXATION
PLAT & DESCRIPTION
ACCEPTABLE
CORNELL R. ROBERTSON, P.E., P.S.
FRANKLIN COUNTY ENGINEER

By RJN Date 07/14/2017



1 City of Reynoldsburg Corp. Line
Case No. 73-72
Ord. No. 47-73
M.R. 159, Pg. 393

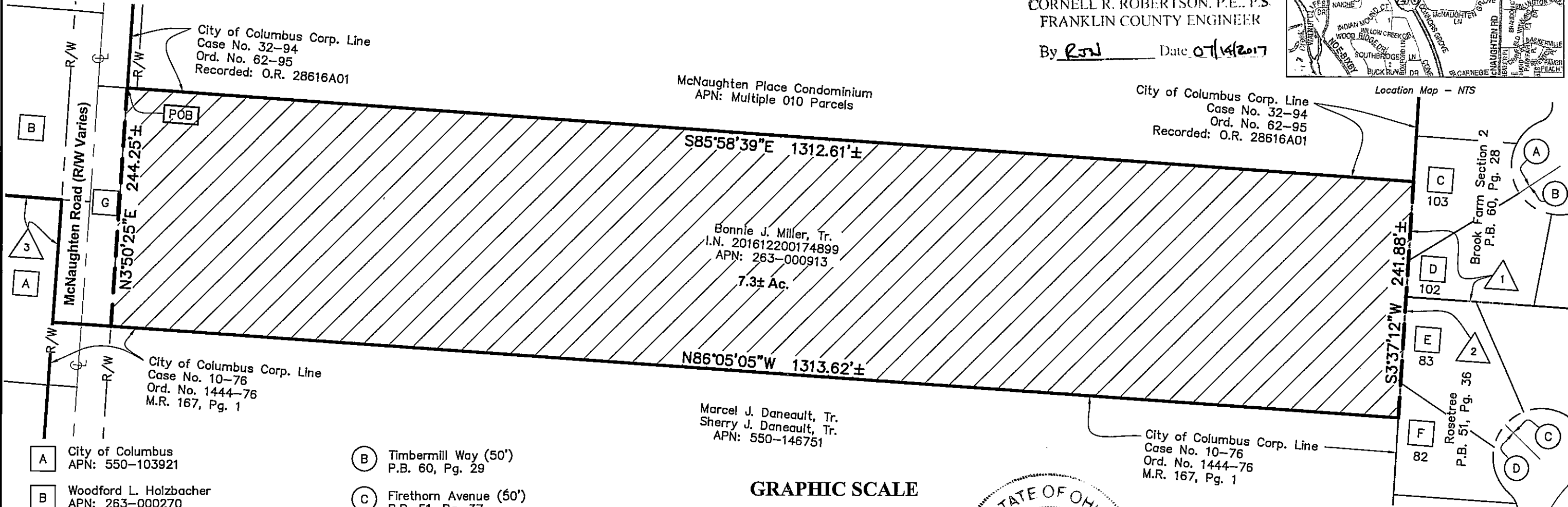
3 City of Columbus Corp. Line
Case No. 263
M.R. 167, Pg. 146-410

2 City of Reynoldsburg Corp. Line
Case No. 76-72
Ord. No. 56-73
M.R. 159, Pg. 393

City of Columbus Corp. Line
Case No. 32-94
Ord. No. 62-95
Recorded: O.R. 28616A01

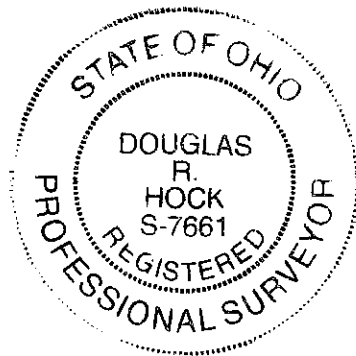
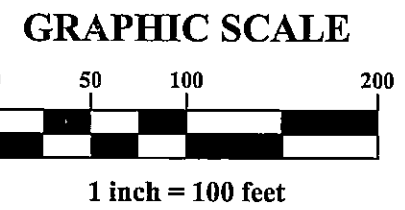
McNaughten Place Condominium
APN: Multiple 010 Parcels

City of Columbus Corp. Line
Case No. 32-94
Ord. No. 62-95
Recorded: O.R. 28616A01

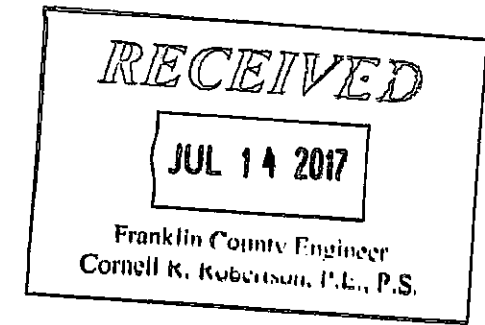


Bonnie J. Miller, Tr.
I.N. 201612200174899
APN: 263-000913
7.3± Ac.

Marcel J. Daneault, Tr.
Sherry J. Daneault, Tr.
APN: 550-146751



Douglas R. Hock 7/13/17
Date: _____
Douglas R. Hock, P.S. 7661
Advanced Civil Design, Inc
422 Beecher Road
Gahanna, OH 43230
Phone 614-428-7750



Length of Contiguity: ±2626 feet
Total Length of Perimeter: ±3112 feet
Percentage of Contiguity : ±84%

No islands of township property are created by this annexation.

- Legend**
- Area to be Annexed
 - Existing City of Reynoldsburg Corp Line
 - Existing City of Columbus Corp Line
 - Proposed City of Columbus Corp Line

- A City of Columbus APN: 550-103921
- B Woodford L. Holzbacher APN: 263-000270
- C Stephen G. McLoughlin APN: 060-006589
- D Gopal, Ganga D. & Lachhi Baskota APN: 060-006588
- E Mary Ann Bostic APN: 060-004260
- F Marc J. Unger APN: 060-004259
- G Franklin County Commissioner's I.N. 201707130095777 0.168 Ac.
- A Needlewood Lane (50') P.B. 60, Pg. 29

Z:\17-0001-847\DWG\PRODUCTION DRAWINGS\SURVEY\17-0001-847 annex rev2.dwg Layout1 Jul 13, 2017 - 2:57:47pm dbicbham