

EX. MONUMENTS OFF C/L OLD HAMILTON RD.

STATION	OFFSET	DESCRIPTION
203+85.96	0.00' RT.	FCGS MON 8815
217+25.06	0.00' RT.	FCGS MON 8816

- (A) 20' GAS EASEMENT  
O.R. 26436 E15
- (B) 20' WATER LINE EASEMENT  
D.B. 3436, PG. 197
- (C) 10' TELEPHONE ESMT.  
I.N. 199801230015929
- (D) 20' ELECTRIC EASEMENT  
D.B. 3459, PG. 559  
ALONG POLE LINE
- (E) CITY OF COLUMBUS  
1.170 ACRES  
I.N. 200307310242157
- (F) CITY OF COLUMBUS  
0.320 ACRES  
I.N. 200807100105811
- (G) CENTER STATE ENTERPRISES LLC  
0.182 ACRES  
I.N. 201603010024553
- (H) FOR R/W COURSE INFORMATION,  
WITHIN THE ROUNDABOUT,  
SEE SHEET 5 OF 5

(20) SLATE RIDGE HOLDINGS, LLC  
545-282622-00  
I.N. 201203300044094  
0.990 ACRES

(19) OHIO NOTE INVESTORS, LLC.  
545-147941-00  
I.N. 201201040000928  
2.386 ACRES

(21) 4701 REXWOOD DRIVE APARTMENTS INVESTORS LLC  
545-237172-00  
I.N. 200206280159719  
35.686 ACRES

(22) CENTER STATE ENTERPRISES LLC  
545-294042-00  
I.N. 201512210178187  
I.N. 201409180123641  
ORG. 29.379 ACRES

(13) HAMILTON II RETAIL LLC  
545-175660-00  
I.N. 200512010253314  
5.063 ACRES

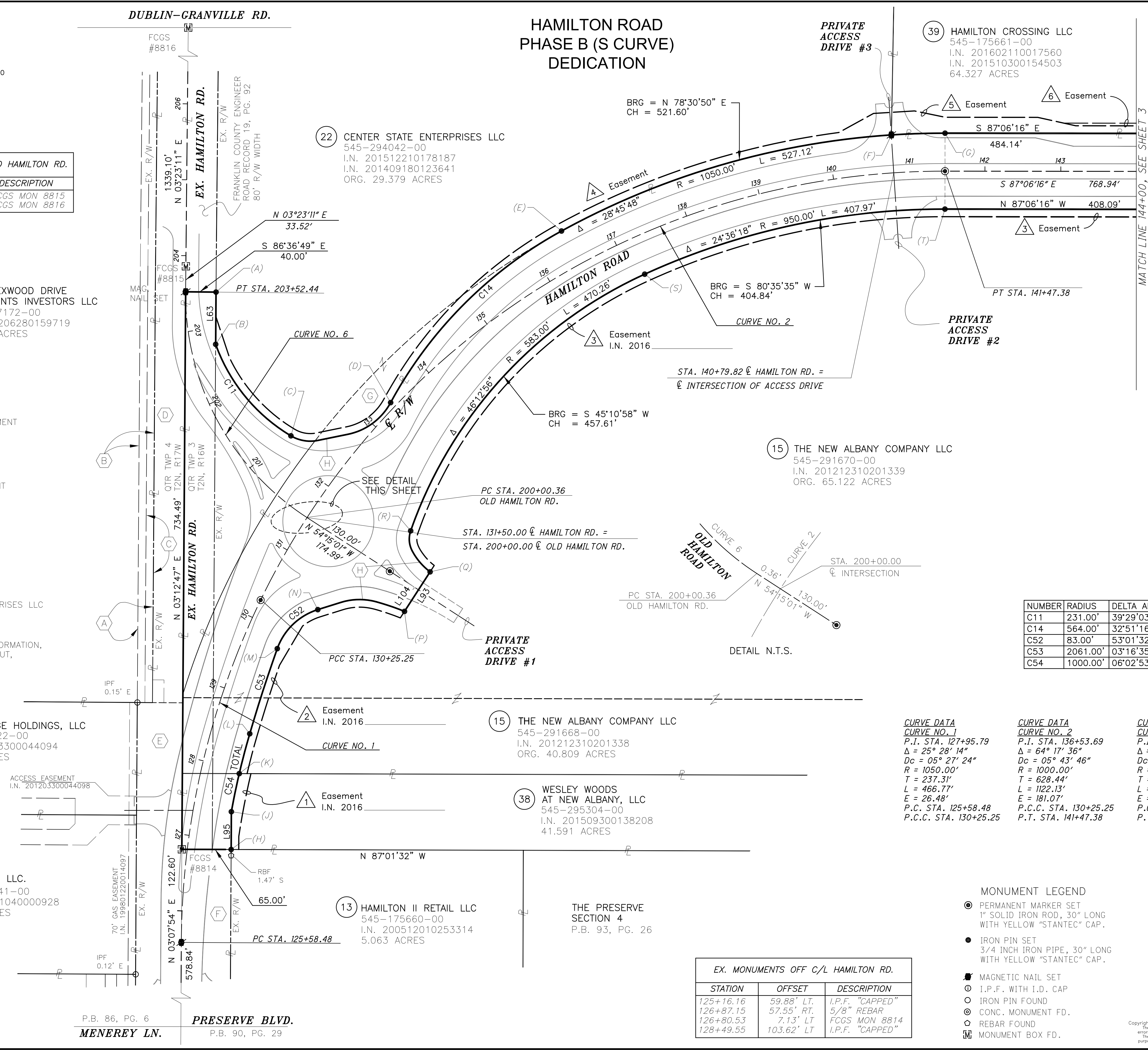
(15) THE NEW ALBANY COMPANY LLC  
545-291668-00  
I.N. 201212310201338  
ORG. 40.809 ACRES

(38) WESLEY WOODS AT NEW ALBANY, LLC  
545-295304-00  
I.N. 201509300138208  
41.591 ACRES

(15) THE NEW ALBANY COMPANY LLC  
545-291670-00  
I.N. 201212310201339  
ORG. 65.122 ACRES

(39) HAMILTON CROSSING LLC  
545-175661-00  
I.N. 201602110017560  
I.N. 201510300154503  
64.327 ACRES

### HAMILTON ROAD PHASE B (S CURVE) DEDICATION



STA/OFF FROM CENTERLINE R/W HAMILTON RD.

(C)	132+23.12	79.25' LT
(D)	133+36.76	7.38' LT
(E)	136+45.37	50.00' LT
(F)	140+80.01	50.00' LT
(G)	141+47.38	50.00' LT
(H)	126+88.69	57.38' RT
(J)	127+40.57	50.00' RT
(K)	127+94.41	50.00' RT
(L)	128+51.41	50.00' RT
(M)	129+74.93	46.43' RT
(N)	130+48.36	73.05' RT
(P)	131+08.95	174.30' RT
(Q)	131+84.16	174.51' RT
(R)	132+17.92	122.12' RT
(S)	137+17.94	50.00' RT
(T)	141+47.38	50.00' RT

STA/OFF FROM CENTERLINE R/W OLD HAMILTON RD.

(A)	203+52.44	40.10' RT
(B)	202+75.90	32.75' RT

- (3) Easement I.N. 2016
- (4) Easement I.N. 2016
- (5) Easement I.N. 2016
- (6) Easement I.N. 2016

NUMBER	DIRECTION	DISTANCE
L63	S 03°12'47" W	68.83'
L93	S 35°44'59" W	62.08'
L95	S 03°07'54" W	49.78'
L104	S 35°44'59" W	39.95'

NUMBER	RADIUS	DELTA ANG.	ARC LEN	CHORD	DIRECTION	CHORD
C11	231.00'	39°29'03"	159.19'	S 36°37'43" E	156.06'	
C14	564.00'	32°51'16"	323.41'	N 47°42'18" E	319.00'	
C52	83.00'	53°01'32"	76.81'	S 48°54'19" W	74.10'	
C53	2061.00'	03°16'35"	117.85'	S 20°45'15" W	117.84'	
C54	1000.00'	06°02'53"	105.56'	S 16°05'31" W	105.51'	

CURVE DATA  
CURVE NO. 1  
P.I. STA. 127+95.79  
Δ = 25° 28' 14"  
Dc = 05° 27' 24"  
R = 1050.00'  
T = 237.31'  
L = 466.77'  
E = 26.48'  
P.C. STA. 125+58.48  
P.C.C. STA. 130+25.25

CURVE DATA  
CURVE NO. 2  
P.I. STA. 136+53.69  
Δ = 64° 17' 36"  
Dc = 16° 22' 13"  
R = 1000.00'  
T = 192.56'  
L = 1122.13'  
E = 181.07'  
P.C.C. STA. 130+25.25  
P.T. STA. 141+47.38

CURVE DATA  
CURVE NO. 6  
P.I. STA. 201+92.92  
Δ = 57° 38' 12"  
Dc = 16° 22' 13"  
R = 350.00'  
T = 192.56'  
L = 352.08'  
E = 49.47'  
P.C. STA. 200+00.36  
P.T. STA. 203+52.44

- MONUMENT LEGEND
- PERMANENT MARKER SET  
1" SOLID IRON ROD, 30" LONG  
WITH YELLOW "STANTEC" CAP.
  - IRON PIN SET  
3/4" INCH IRON PIPE, 30" LONG  
WITH YELLOW "STANTEC" CAP.
  - MAGNETIC NAIL SET
  - I.P.F. WITH I.D. CAP
  - IRON PIN FOUND
  - CONC. MONUMENT FD.
  - REBAR FOUND
  - MONUMENT BOX FD.

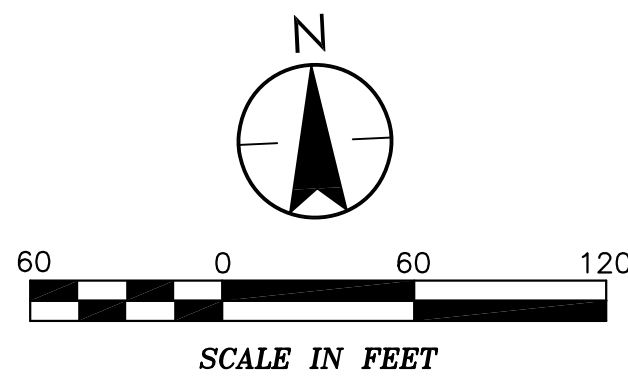
### HAMILTON ROAD PHASE B, (S CURVE) DEDICATION SHEET 2 OF 5

PREPARED BY:  
**Stantec**  
1500 LAKE SHORE DRIVE, SUITE 100  
COLUMBUS, OHIO 43204  
(614) 488-4383 1-800-340-2743

EX. MONUMENTS OFF C/L HAMILTON RD.

STATION	OFFSET	DESCRIPTION
125+16.16	59.88' LT.	I.P.F. "CAPPED"
126+87.15	57.55' RT.	5/8" REBAR
126+80.53	7.13' LT	FCGS MON 8814
128+49.55	103.62' LT	I.P.F. "CAPPED"

# HAMILTON ROAD PHASE B (S CURVE) DEDICATION



**CURVE DATA**  
**CURVE NO. 3**  
 P.I. STA. 153+22.88  
 $\Delta = 34^\circ 45' 51''$   
 $Dc = 05^\circ 43' 30''$   
 $R = 1000.81'$   
 $T = 313.29'$   
 $L = 607.24'$   
 $E = 47.89'$   
 P.C. STA. 150+09.59  
 P.T. STA. 156+16.83

**CURVE DATA**  
**CURVE NO. 4**  
 P.I. STA. 162+05.23  
 $\Delta = 60^\circ 56' 55''$   
 $Dc = 05^\circ 43' 48''$   
 $R = 999.92'$   
 $T = 588.39'$   
 $L = 1063.67'$   
 $E = 160.27'$   
 P.C.C. STA. 156+16.83  
 P.T. STA. 166+80.50

STA/OFF FROM CENTERLINE R/W HAMILTON RD.		
(A)	146+31.52	50.00' LT
(B)	148+54.89	90.72' LT
(C)	148+69.91	102.15' LT
(D)	148+85.44	159.33' LT
(E)	149+56.23	170.77' LT
(F)	149+73.51	103.39' LT
(G)	149+93.64	75.22' LT
(H)	150+30.59	46.39' LT
(J)	151+02.05	26.41' LT
(K)	154+78.40	50.00' LT
(L)	156+16.83	50.00' LT
(M)	157+07.92	50.00' LT
(N)	145+55.47	50.00' RT
(P)	147+40.22	33.44' RT
(Q)	148+06.02	49.67' RT

STA/OFF FROM CENTERLINE R/W HAMILTON RD.		
(R)	148+38.61	75.09' RT
(S)	148+59.24	103.68' RT
(T)	148+76.45	171.00' RT
(U)	149+47.09	159.63' RT
(V)	149+55.06	114.87' RT
(W)	149+97.73	86.84' RT
(X)	150+18.00	83.67' RT
(Y)	152+17.81	51.32' RT
(Z)	152+18.80	72.34' RT
(AA)	155+79.11	60.62' RT
(BB)	156+10.00	74.56' RT
(CC)	156+71.42	69.99' RT
(DD)	156+63.28	50.00' RT
(EE)	157+09.78	50.00' RT

39 HAMILTON CROSSING LLC  
 545-175661-00  
 I.N. 201602110017560  
 I.N. 201510300154503  
 64.327 ACRES

25 TOWN & COUNTRY CITY, INC.  
 545-280181-00  
 I.N. 200602280037517  
 ORG. 38.442 ACRES

15 THE NEW ALBANY COMPANY LLC  
 545-291668-00  
 I.N. 201212310201338  
 ORG. 40.809 ACRES

38 WESLEY WOODS AT NEW ALBANY, LLC  
 545-295304-00  
 I.N. 201509300138208  
 41.591 ACRES

**AUDITOR'S PID & AREA CALCULATIONS:**

545-291668-00 (PART OF ORG. 40.809 ACRES)	=	0.607 ACRES
545-291670-00 (PART OF ORG. 65.122 ACRES)	=	6.733 ACRES
545-294042-00 (PART OF ORG. 29.379 ACRES)	=	0.862 ACRES
545-175661-00 (PART OF ORG. 64.327 ACRES)	=	0.355 ACRES
545-295523-00 (PART OF ORG. 64.327 ACRES)	=	4.262 ACRES
545-280181-00 (PART OF ORG. 38.442 ACRES)	=	0.717 ACRES
545-251414-00 (PART OF ORG. 23.250 ACRES)	=	0.345 ACRES
545-295304-00 (PART OF ORG. 41.591 ACRES)	=	0.179 ACRES
<b>TOTAL DEDICATED RIGHT-OF-WAY AREA</b>	<b>=</b>	<b>14.060 ACRES</b>

NUMBER	RADIUS	DELTA ANG.	ARC LEN	CHORD DIRECTION	CHORD
C16	633.00'	20°39'47"	228.29'	N 82°33'50" E	227.05'
C17	33.00'	33°13'46"	19.14'	N 55°37'04" E	18.87'
C18	83.00'	41°49'21"	60.59'	N 18°05'30" E	59.25'
C19	383.00'	10°25'14"	69.66'	S 11°29'37" E	69.56'
C20	63.00'	31°53'48"	35.07'	S 32°39'08" E	34.62'
C22	949.92'	05°13'09"	86.53'	N 55°31'18" E	86.50'
C23	583.00'	40°33'11"	412.64'	N 32°38'08" E	404.08'
C36	639.00'	30°37'28"	341.54'	S 37°29'36" W	337.49'
C37	1049.92'	02°39'52"	48.83'	S 54°08'16" W	48.82'
C39	100.00'	12°10'54"	21.26'	S 84°11'28" W	21.22'
C40	50.00'	61°23'33"	53.58'	S 59°35'08" W	51.05'
C41	83.00'	31°47'14"	46.05'	S 12°59'45" W	45.46'
C42	383.00'	10°24'32"	69.58'	N 11°27'10" W	69.48'
C43	63.00'	32°29'47"	35.73'	N 32°54'19" W	35.25'
C44	83.00'	48°11'37"	69.81'	N 73°15'01" W	67.77'
C45	1039.00'	10°14'33"	185.74'	S 87°46'27" W	185.49'
C60	83.00'	51°09'55"	74.12'	S 74°11'00" E	71.68'
C61	1461.00'	14°10'40"	361.52'	N 73°08'43" E	360.60'
C62	950.81'	07°55'30"	131.51'	N 62°05'38" E	131.41'

NUMBER	DIRECTION	DISTANCE
L65	S 87°06'16" E	484.14'
L66	N 83°43'00" E	71.71'
L67	S 48°36'02" E	45.97'
L85	S 58°06'55" E	21.77'
L86	S 52°47'40" W	66.00'
L87	S 82°18'53" W	35.80'
L88	N 11°53'59" W	21.04'
L90	S 83°45'06" W	71.55'
L91	N 49°09'13" W	41.33'
L92	N 87°06'16" W	408.09'
L108	N 83°43'00" E	40.42'
L110	S 83°45'06" W	40.38'

- 5 Easement I.N. 2016
- 6 Easement I.N. 2016
- 7 Easement I.N. 2016
- 8 Easement I.N. 2016
- 9 Easement I.N. 2016
- 10 Easement I.N. 2016

- MONUMENT LEGEND**
- PERMANENT MARKER SET  
1" SOLID IRON ROD, 30" LONG WITH YELLOW "STANTEC" CAP.
  - IRON PIN SET  
3/4" INCH IRON PIPE, 30" LONG WITH YELLOW "STANTEC" CAP.
  - MAGNETIC NAIL SET
  - I.P.F. WITH I.D. CAP
  - IRON PIN FOUND
  - CONC. MONUMENT FD.
  - REBAR FOUND
  - MONUMENT BOX FD.

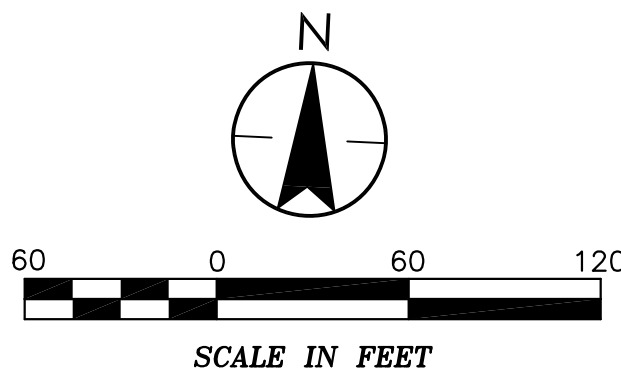
## HAMILTON ROAD PHASE B, (S CURVE) DEDICATION SHEET 3 OF 5

PREPARED BY:  
**Stantec**  
 1500 LAKE SHORE DRIVE, SUITE 100  
 COLUMBUS, OHIO 43204  
 (614) 488-4383 1-800-340-2743

Copyright Reserved  
 The Contractor shall verify and be responsible for all dimensions. DO NOT SCALE THE DRAWING - any errors or omissions shall be reported to Stantec without delay. The Copyrights to all designs and drawings are the property of Stantec. Reproduction or use for any purposes other than that authorized by Stantec is forbidden.

RAUER, STEVE U:\172608892\Nonrepresentation\Design\Urban\Plan\_S&M\Right of Way\Detail\_Sheet\_Last\_Sheet.dwg  
 RIGHT OF WAY DETAIL SHEET Last Sheet: Mar 21, 2016 8:50 AM Plotted: Mar 21, 2016 11:56 AM

# HAMILTON ROAD PHASE B (S CURVE) DEDICATION



32 161 HAMILTON, LLC  
010-245194-00  
I.N. 200412010273500  
5.876 ACRES

40 HAMILTON CROSSING LLC  
010-295521-00  
I.N. 201602110017560  
I.N. 201510300154503  
25.832 ACRES

39 HAMILTON CROSSING LLC  
545-251962-00  
I.N. 201602110017560  
I.N. 201510300154503  
64.327 ACRES

27 TOWN & COUNTRY CITY, INC.  
545-251414-00  
I.N. 200001190012686  
ORG. 23.250 ACRES

39 HAMILTON CROSSING LLC  
545-175661-00  
I.N. 201602110017560  
I.N. 201510300154503  
64.327 ACRES

39 HAMILTON CROSSING LLC  
545-295523-00  
I.N. 201602110017560  
I.N. 201510300154503  
64.327 ACRES

39 HAMILTON CROSSING LLC  
545-295523-00  
I.N. 201602110017560  
I.N. 201510300154503  
64.327 ACRES

39 HAMILTON CROSSING LLC  
545-295523-00  
I.N. 201602110017560  
I.N. 201510300154503  
64.327 ACRES

25 TOWN & COUNTRY CITY, INC.  
545-280181-00  
I.N. 200602280037517  
ORG. 38.442 ACRES

25 TOWN & COUNTRY CITY, INC.  
545-280180-00  
I.N. 200602280037517  
ORG. 27.308 ACRES

STATE OF OHIO  
I.N. 199905240130003  
PARCEL 102-WD

- 10 Easement I.N. 2016
- 11 Easement I.N. 2016
- 12 Easement I.N. 2016
- 13 Easement I.N. 2016
- 14 Easement I.N. 2016
- 16 Easement I.N. 2016

HAMILTON RD.  
N 02°49'02" W  
1.21'  
N 87°11'41" E  
1.21'  
N 87°10'58" E  
ODOT R/W PLAN  
FRA-161-16.75  
LIC-161-0.00

HAMILTON RD.  
STA. 168+72.63 =  
STA. 70+00.00, 1.21' LT.  
DUBLIN-GRANVILLE RD.

HAMILTON RD.  
STA. 168+71.42 =  
STA. 70+00.00, 0.00' RT.  
DUBLIN-GRANVILLE RD.

**CURVE DATA**  
CURVE NO. 4  
P.T. STA. 162+05.23  
Δ = 60° 56' 55"  
Dc = 05° 43' 48"  
R = 999.92'  
T = 588.39'  
L = 1063.67'  
E = 160.27'  
P.C.C. STA. 156+16.83  
P.T. STA. 166+80.50

**EX. MONUMENTS OFF C/L CONST. (1992)  
DUBLIN-GRANVILLE ROAD**

STATION	OFFSET	DESCRIPTION
64+41.80	28.99' RT.	CONC. MONUM.
68+00.09	29.86' RT.	CONC. MONUM.
68+00.05	30.19' LT.	CONC. MONUM.
73+00.00	30.00' RT.	CONC. MONUM.
72+99.94	30.27' LT.	CONC. MONUM.
77+99.85	15.03' RT.	CONC. MONUM.
77+99.91	15.66' LT.	CONC. MONUM.
80+54.40	0.99' LT.	R.R.S. FOUND

NUMBER	DIRECTION	DISTANCE
L69	N 16°30'37" E	62.77'
L71	N 02°49'02" W	94.50'
L72	N 46°40'49" W	50.52'
L74	N 03°00'27" E	60.84'
L75	S 02°47'52" E	40.00'
L78	S 02°49'02" E	10.00'
L79	S 56°45'39" W	52.18'
L80	S 02°49'02" E	104.50'
L81	S 08°54'49" W	232.00'
L83	S 16°37'37" W	61.63'
L114	N 16°30'37" E	37.90'
L116	S 16°37'37" W	45.81'

**STA/OFF FROM CENTERLINE R/W  
HAMILTON RD.**

(A)	161+45.62	105.72' LT
(B)	161+75.10	168.24' LT
(C)	162+50.31	176.41' LT
(D)	163+16.79	61.77' LT
(E)	163+92.55	36.18' LT
(F)	166+80.50	50.00' LT
(G)	167+75.00	50.00' LT
(K)	159+77.32	26.08' RT
(L)	160+36.41	14.52' RT
(M)	161+03.05	33.07' RT
(N)	161+79.28	155.88' RT
(P)	162+32.30	147.56' RT
(Q)	162+60.31	85.09' RT
(R)	164+75.78	60.00' RT
(S)	166+80.50	60.00' RT
(T)	167+85.00	60.00' RT

**STA/OFF FROM C/L CONST. (1992)  
DUBLIN-GRANVILLE RD.**

(H)	69+15.00	60.00' RT
(J)	64+78.19	59.21' RT
(U)	71+05.00	60.00' RT
(V)	71+05.00	50.00' RT
(W)	77+06.95	50.00' RT
(X)	78+25.00	50.00' RT
(Y)	80+23.08	39.00' RT

NUMBER	RADIUS	DELTA ANG.	ARC LEN	CHORD	DIRECTION	CHORD
C23	583.00'	40°33'11"	412.64'	N 32°38'08" E	404.08'	
C28	83.00'	54°49'45"	79.43'	N 35°23'43" E	76.43'	
C29	1461.00'	10°47'52"	275.34'	N 02°34'55" E	274.93'	
C30	1059.92'	11°43'50"	217.01'	S 03°02'53" W	216.63'	
C35	83.00'	50°24'23"	73.02'	S 47°23'04" W	70.69'	
C36	639.00'	30°37'28"	341.54'	S 37°29'36" W	337.49'	

- MONUMENT LEGEND**
- PERMANENT MARKER SET 1" SOLID IRON ROD, 30" LONG WITH YELLOW "STANTEC" CAP.
  - IRON PIN SET 3/4" INCH IRON PIPE, 30" LONG WITH YELLOW "STANTEC" CAP.
  - MAGNETIC NAIL SET
  - I.P.F. WITH I.D. CAP
  - IRON PIN FOUND
  - ◎ CONC. MONUMENT FD.
  - ⊕ R.R.S. FOUND
  - ⊞ MONUMENT BOX FD.

## HAMILTON ROAD PHASE B, (S CURVE) DEDICATION SHEET 4 OF 5

PREPARED BY:  
**Stantec**  
1500 LAKE SHORE DRIVE, SUITE 100  
COLUMBUS, OHIO 43204  
(614) 488-4383 1-800-340-2743

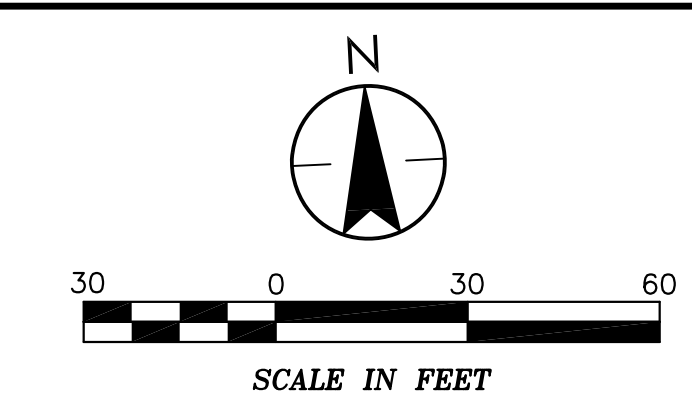
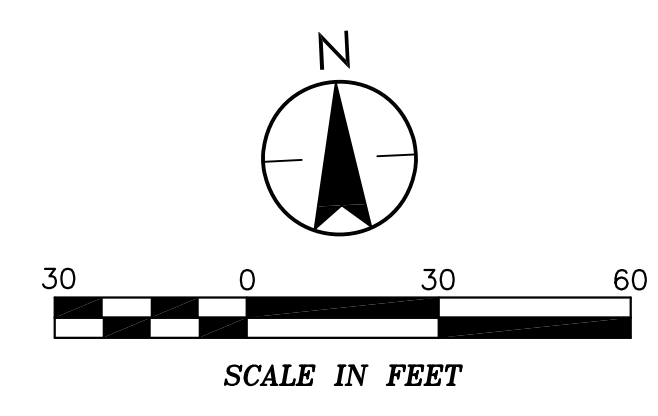
Copyright Reserved  
The Contractor shall verify and be responsible for all dimensions. Do not scale the drawing - any errors or omissions shall be reported to Stantec without delay. The Copyrights to all designs and drawings are the property of Stantec. Reproduction or use for any purposes other than that authorized by Stantec is forbidden.

P:\000000\172608892\Nonrepro\Drawings\Plan\_S&M\Right of Way\_Detail\_Sheet\_Last\_Saved\_Mar\_21\_2016\_11:56 AM

# HAMILTON ROAD PHASE B (S CURVE) DEDICATION

CURVE DATA CURVE NO. 1	CURVE DATA CURVE NO. 2	CURVE DATA CURVE NO. 6
P.I. STA. 127+95.79	P.I. STA. 136+53.69	P.I. STA. 201+92.92
$\Delta = 25^\circ 28' 14''$	$\Delta = 64^\circ 17' 36''$	$\Delta = 57^\circ 38' 12''$
$Dc = 05^\circ 27' 24''$	$Dc = 05^\circ 43' 46''$	$Dc = 16^\circ 22' 13''$
$R = 1050.00'$	$R = 1000.00'$	$R = 350.00'$
$T = 237.31'$	$T = 628.44'$	$T = 192.56'$
$L = 466.77'$	$L = 1122.13'$	$L = 352.08'$
$E = 26.48'$	$E = 181.07'$	$E = 49.47'$
P.C. STA. 125+58.48	P.C.C. STA. 130+25.25	P.C. STA. 200+00.36
P.C.C. STA. 130+25.25	P.T. STA. 141+47.38	P.T. STA. 203+52.44

CURVE DATA CURVE NO. 4
P.I. STA. 162+05.23
$\Delta = 60^\circ 56' 55''$
$Dc = 05^\circ 43' 48''$
$R = 999.92'$
$T = 588.39'$
$L = 1063.67'$
$E = 160.27'$
P.C.C. STA. 156+16.83
P.T. STA. 166+80.50

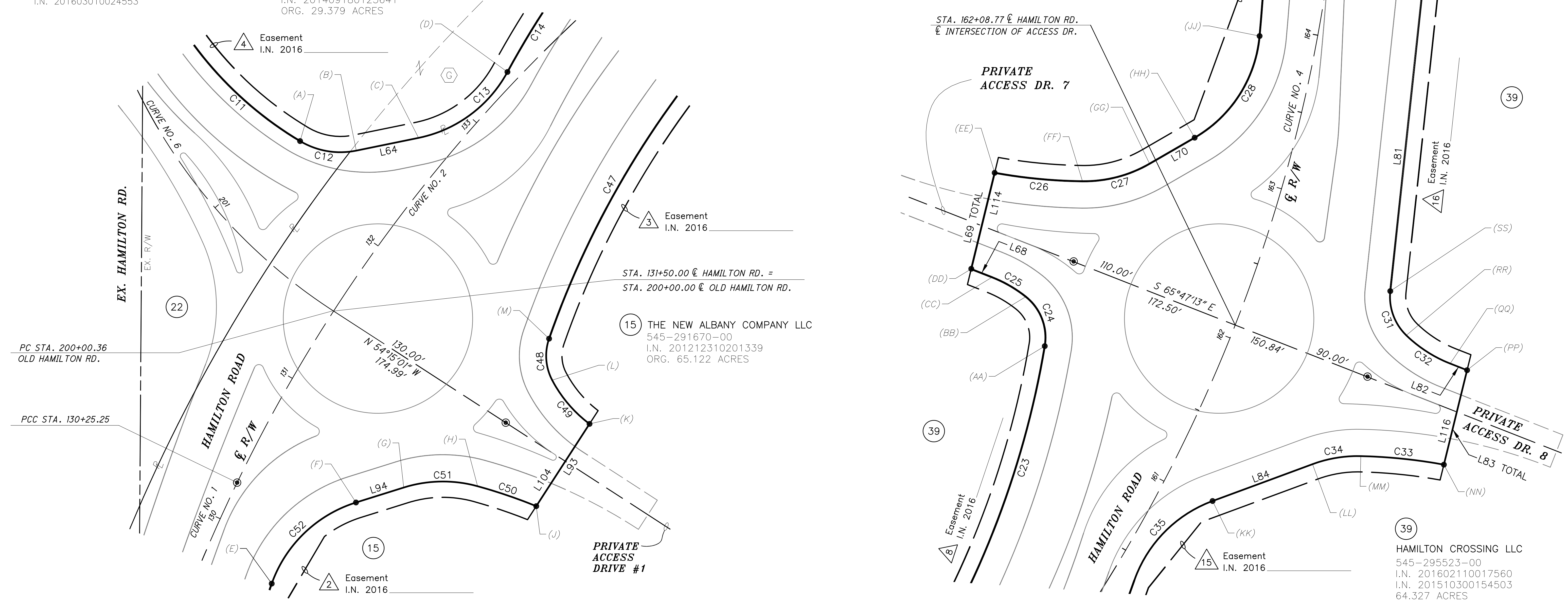


22 CENTER STATE ENTERPRISES LLC  
545-294042-00  
I.N. 201603010024553  
ORG. 29.379 ACRES

15 THE NEW ALBANY COMPANY LLC  
545-291670-00  
I.N. 201212310201339  
ORG. 65.122 ACRES

39 HAMILTON CROSSING LLC  
545-295523-00  
I.N. 201602110017560  
I.N. 201510300154503  
64.327 ACRES

39 HAMILTON CROSSING LLC  
545-295523-00  
I.N. 201602110017560  
I.N. 201510300154503  
64.327 ACRES



NUMBER	DIRECTION	DISTANCE
L64	N 81°15'58" E	40.27'
L93	S 35°44'59" W	62.08'
L94	S 75°25'05" W	31.70'
L104	S 35°44'59" W	39.95'

NUMBER	RADIUS	DELTA ANG.	ARC LEN	CHORD DIRECTION	CHORD
C11	231.00'	39°29'03"	159.19'	S 36°37'43" E	156.06'
C12	50.00'	42°21'47"	36.97'	S 77°33'09" E	36.13'
C13	83.00'	49°59'18"	72.41'	N 56°16'19" E	70.14'
C14	564.00'	32°51'16"	323.41'	N 47°42'18" E	319.00'
C47	583.00'	46°12'56"	470.26'	S 45°10'58" W	457.61'
C48	33.00'	47°03'24"	27.10'	S 01°27'12" E	26.35'
C49	83.00'	25°21'37"	36.74'	S 37°39'42" E	36.44'
C50	333.00'	06°45'28"	39.28'	N 68°25'04" W	39.25'
C51	83.00'	32°47'07"	47.49'	N 88°11'21" W	46.85'
C52	83.00'	53°01'32"	76.81'	S 48°54'19" W	74.10'

STA/OFF FROM CENTERLINE R/W HAMILTON RD.	DESCRIPTION
(A) 132+23.12	79.25' LT
(B) 132+39.05	47.33' LT
(C) 132+69.06	21.68' LT
(D) 133+36.76	7.38' LT
(E) 129+74.93	46.43' RT
(F) 130+48.36	73.05' RT
(G) 130+72.93	95.38' RT
(H) 130+99.65	135.84' RT
(J) 131+08.95	174.30' RT
(K) 131+84.16	174.51' RT
(L) 131+94.85	139.21' RT
(M) 132+17.92	122.12' RT

- MONUMENT LEGEND**
- PERMANENT MARKER SET  
1" SOLID IRON ROD, 30" LONG  
WITH YELLOW "STANTEC" CAP.
  - IRON PIN SET  
3/4 INCH IRON PIPE, 30" LONG  
WITH YELLOW "STANTEC" CAP.
  - MAGNETIC NAIL SET
  - I.P.F. WITH I.D. CAP
  - IRON PIN FOUND
  - CONC. MONUMENT FD.
  - REBAR FOUND
  - MONUMENT BOX FD.

NUMBER	DIRECTION	DISTANCE
L68	N 65°47'13" W	14.18'
L69	N 16°30'37" E	62.77'
L70	N 62°48'35" E	32.99'
L81	S 08°54'49" W	232.00'
L82	S 65°47'13" E	11.51'
L83	S 16°37'37" W	61.63'
L84	S 72°35'15" W	67.52'
L114	N 16°30'37" E	34.51'
L116	S 16°37'37" W	34.39'

NUMBER	RADIUS	DELTA ANG.	ARC LEN	CHORD DIRECTION	CHORD
C23	583.00'	40°33'11"	412.64'	N 32°38'08" E	404.08'
C24	33.00'	61°01'14"	35.15'	N 18°09'04" W	33.51'
C25	83.00'	17°07'31"	24.81'	N 57°13'27" W	24.72'
C26	333.00'	09°37'57"	55.98'	S 81°40'33" E	55.92'
C27	83.00'	30°41'52"	44.47'	N 78°09'32" E	43.94'
C28	83.00'	54°49'45"	79.43'	N 35°23'43" E	76.43'
C31	34.00'	52°00'23"	30.86'	S 17°05'23" E	29.81'
C32	84.00'	22°41'38"	33.27'	S 54°26'24" E	33.05'
C33	333.00'	09°06'51"	52.97'	N 81°18'56" W	52.91'
C34	83.00'	21°32'23"	31.20'	S 83°21'27" W	31.02'
C35	83.00'	50°24'23"	73.02'	S 47°23'04" W	70.69'

STA/OFF FROM CENTERLINE R/W HAMILTON RD.	DESCRIPTION
(AA) 161+45.62	105.72' LT
(BB) 161+72.37	129.51' LT
(CC) 161+75.66	154.06' LT
(DD) 161+75.10	168.24' LT
(EE) 162+50.31	176.41' LT
(FF) 162+65.18	121.94' LT
(GG) 162+91.21	84.71' LT
(HH) 163+16.79	61.77' LT
(JJ) 163+92.55	36.18' LT
(KK) 161+03.05	33.07' RT
(LL) 161+49.31	79.68' RT
(MM) 161+65.11	105.45' RT
(NN) 161+79.28	155.88' RT
(PP) 162+32.30	147.56' RT
(QQ) 162+32.54	136.06' RT
(RR) 162+39.13	103.84' RT
(SS) 162+60.31	85.09' RT

## HAMILTON ROAD PHASE B, (S CURVE) DEDICATION SHEET 5 OF 5

PREPARED BY:  
**Stantec**  
1500 LAKE SHORE DRIVE, SUITE 100  
COLUMBUS, OHIO 43204  
(614) 488-4383 1-800-340-8743

Copyright Reserved  
The Contractor shall verify and be responsible for all dimensions. Do not scale the drawing - any errors or omissions shall be reported to Stantec without delay. The Copyrights to all designs and drawings are the property of Stantec. Reproduction or use for any purposes other than that authorized by Stantec is forbidden.