

PULTE HOMES OF OHIO
IN. 202308300689025
57.221 ACRES

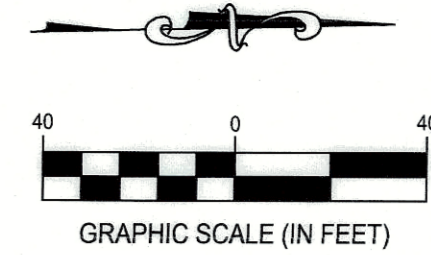
Curve	Delta	Radius	Arc Length	Chord
C1	17° 34' 49"	225.00'	69.04'	N7° 29' 06"W, 68.77'
C2	90° 00' 00"	35.00'	54.98'	N42° 13' 19"E, 49.50'
C3	17° 34' 49"	250.00'	76.71'	N7° 29' 06"W, 76.41'
C4	3° 26' 01"	100.00'	5.99'	S0° 24' 43"E, 5.99'
C5	3° 26' 01"	100.00'	5.99'	N0° 24' 43"W, 5.99'
C6	16° 41' 57"	100.00'	29.15'	N9° 39' 17"E, 29.04'
C7	16° 41' 57"	100.00'	29.15'	S9° 39' 17"W, 29.04'
C8	0° 42' 20"	275.00'	3.39'	N15° 55' 21"W, 3.39'
C9	9° 56' 01"	275.00'	47.68'	S10° 36' 11"E, 47.62'
C10	6° 56' 29"	275.00'	33.32'	S2° 09' 56"E, 33.30'
C11	88° 57' 30"	20.00'	31.05'	N43° 10' 27"W, 28.03'
C12	91° 02' 30"	20.00'	31.78'	S46° 49' 33"W, 28.54'

Curve	Delta	Radius	Arc Length	Chord
C13	3° 26' 01"	75.00'	4.49'	S0° 24' 43"E, 4.49'
C14	1° 13' 36"	125.00'	2.68'	S1° 30' 55"E, 2.68'
C15	2° 12' 25"	125.00'	4.81'	S0° 12' 06"W, 4.81'
C16	15° 06' 39"	125.00'	32.97'	S8° 51' 38"W, 32.87'
C17	1° 35' 18"	125.00'	3.47'	S17° 12' 36"W, 3.47'
C18	16° 41' 57"	75.00'	21.86'	S9° 39' 17"W, 21.78'
C19	88° 57' 30"	20.00'	31.05'	S43° 10' 27"E, 28.03'
C20	91° 02' 30"	20.00'	31.78'	N46° 49' 33"E, 28.54'
C21	16° 41' 57"	125.00'	36.43'	N9° 39' 17"E, 36.30'
C22	16° 41' 57"	75.00'	21.86'	N9° 39' 17"E, 21.78'
C23	3° 26' 01"	75.00'	4.49'	N0° 24' 43"W, 4.49'
C24	3° 26' 01"	125.00'	7.49'	N0° 24' 43"W, 7.49'

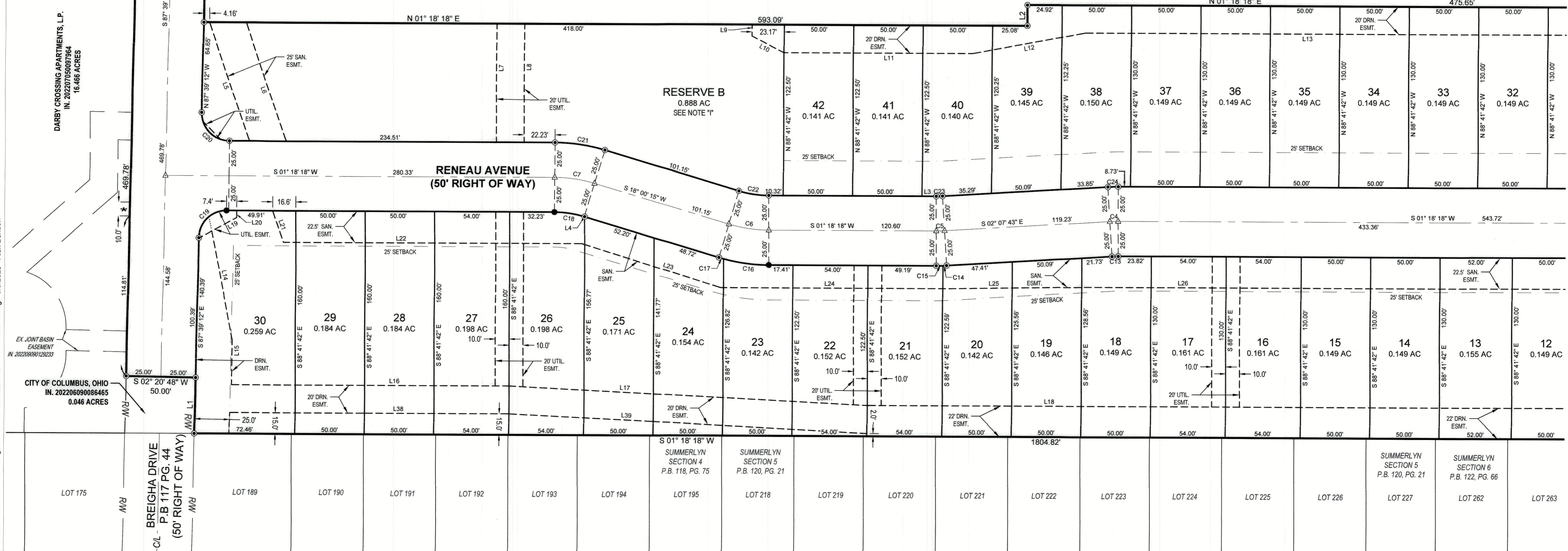
Line #	Direction	Length
L1	N87° 39' 12"W	40.00'
L2	N88° 41' 42"W	15.00'
L3	N01° 18' 18"E	10.28'
L4	S18° 00' 15"W	0.23'
L5	S72° 22' 44"W	89.86'
L6	S72° 22' 44"W	89.86'
L7	S88° 41' 42"E	85.00'
L8	S88° 41' 42"E	85.00'
L9	N88° 41' 42"W	8.27'
L10	S28° 08' 56"W	25.97'
L11	S01° 18' 23"W	135.68'
L12	S09° 12' 33"E	82.20'
L13	S01° 18' 11"W	434.14'

Line #	Direction	Length
L14	N80° 16' 55"E	89.88'
L15	S87° 39' 12"E	32.26'
L16	N01° 18' 18"E	200.66'
L17	N04° 11' 27"E	258.21'
L18	N01° 18' 18"E	560.54'
L19	N27° 16' 45"W	31.19'
L20	N88° 41' 42"W	4.97'
L21	S72° 22' 44"W	23.79'
L22	S01° 18' 18"W	215.01'
L23	S18° 47' 22"W	104.84'
L24	S01° 18' 18"W	160.02'
L25	S00° 26' 44"W	100.01'
L26	S01° 18' 18"W	433.58'

Line #	Direction	Length
L27	S00° 35' 34"E	24.69'
L28	S01° 18' 18"W	138.38'
L29	S01° 18' 18"W	70.26'
L30	S05° 44' 05"E	102.25'
L31	S73° 43' 29"W	20.00'
L32	N16° 16' 31"W	298.22'
L33	S45° 19' 21"W	56.95'
L34	N01° 18' 18"E	28.78'
L35	N45° 19' 21"E	47.07'
L36	N20° 00' 17"W	89.99'
L37	S16° 16' 31"E	7.30'
L38	N01° 18' 18"E	103.76'
L39	N04° 03' 27"E	103.86'



DARBY CROSSING APARTMENTS, L.P.
IN. 202207050097864
15.299 ACRES



SEE SHEET 3

CLOVER RUN SECTION 1
State of Ohio, County of Franklin, City of Columbus,
Virginia Military Survey Nos. 1571 & 5243

Revisions / Submissions		
ID	Description	Date

Project Number: 760461
Scale: 1"=40'
Drawn By: ATW
Checked By: ALB
Date: August 14, 2023
Issue:

- CESO IRON PIN LEGEND
- IRON PIN FOUND
 - IRON PIN TO BE SET (5/8"x30" REBAR W/ CESO CAP)
 - ▲ MAG NAIL SET
 - PERMANENT MARKER SET (1"x30" REBAR W/ ALUMINUM CESO CAP)
 - * NO VEHICULAR ACCESS (SEE NOTE "K")

PLAT