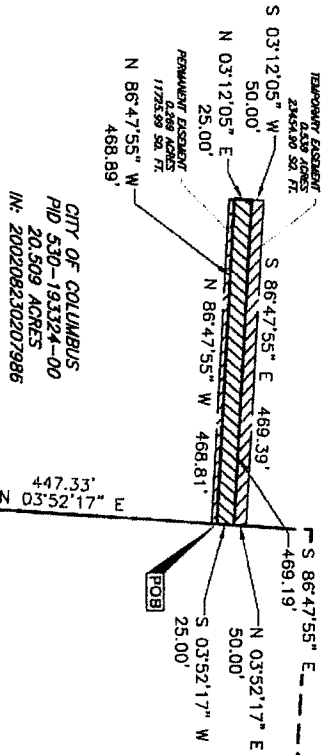


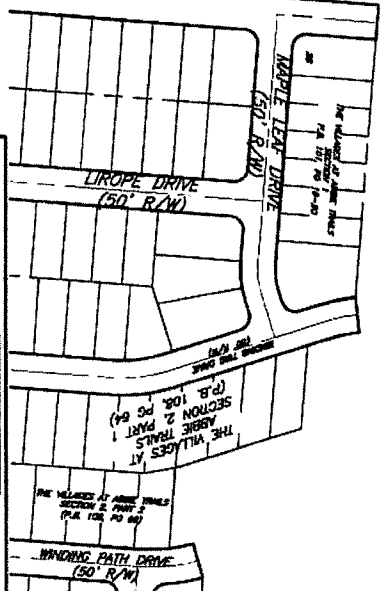
MA Smith
 12/3/2015
 CIVIL & ENVIRONMENTAL CONSULTANTS, INC.
 MARK ALAN SMITH
 PROFESSIONAL SURVEYOR NO.: S-82332



CITY OF COLUMBUS
 PID 530-193324-00
 20.509 ACRES
 IN: 2002082302079986

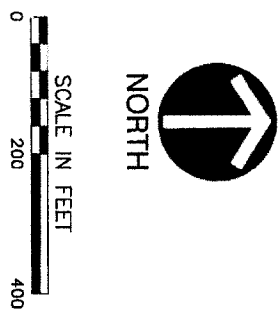
RESERVE AT ABBIE LAKES, LLC
 PID 530-26144-00
 37.067 ACRES
 IN: 2002051301201112

THE VILLAGES AT ABBIE TRAILS
 SECTION 1
 P.B. 101, PG 19-20



ABBIE TRAILS INVESTMENT, LLC.
 IN: 20081130163482
 43.420 ACRES

CARL E. & BACK 80 LTD.
 O.R. 33972 B06
 78.416 ACRES



<p>Civil & Environmental Consultants, Inc. 333 Baldwin Road - Pittsburgh, PA 15205 412-429-2324 800-365-2324 www.ceconic.com</p>		<p>SANITARY SEWER EASEMENT FISCHER DEVELOPMENT COMPANY THE VILLAGE OF ABBIE TRAILS CITY OF COLUMBUS, OHIO EASEMENT EXHIBIT</p>	
DRAWN BY: BA CHECKED BY: MAS DATE: JUNE 2015 DWG SCALE: 1"=200' PROJECT NO: 141-729	APPROVED BY: JAM DRAWING NO: ESMT		