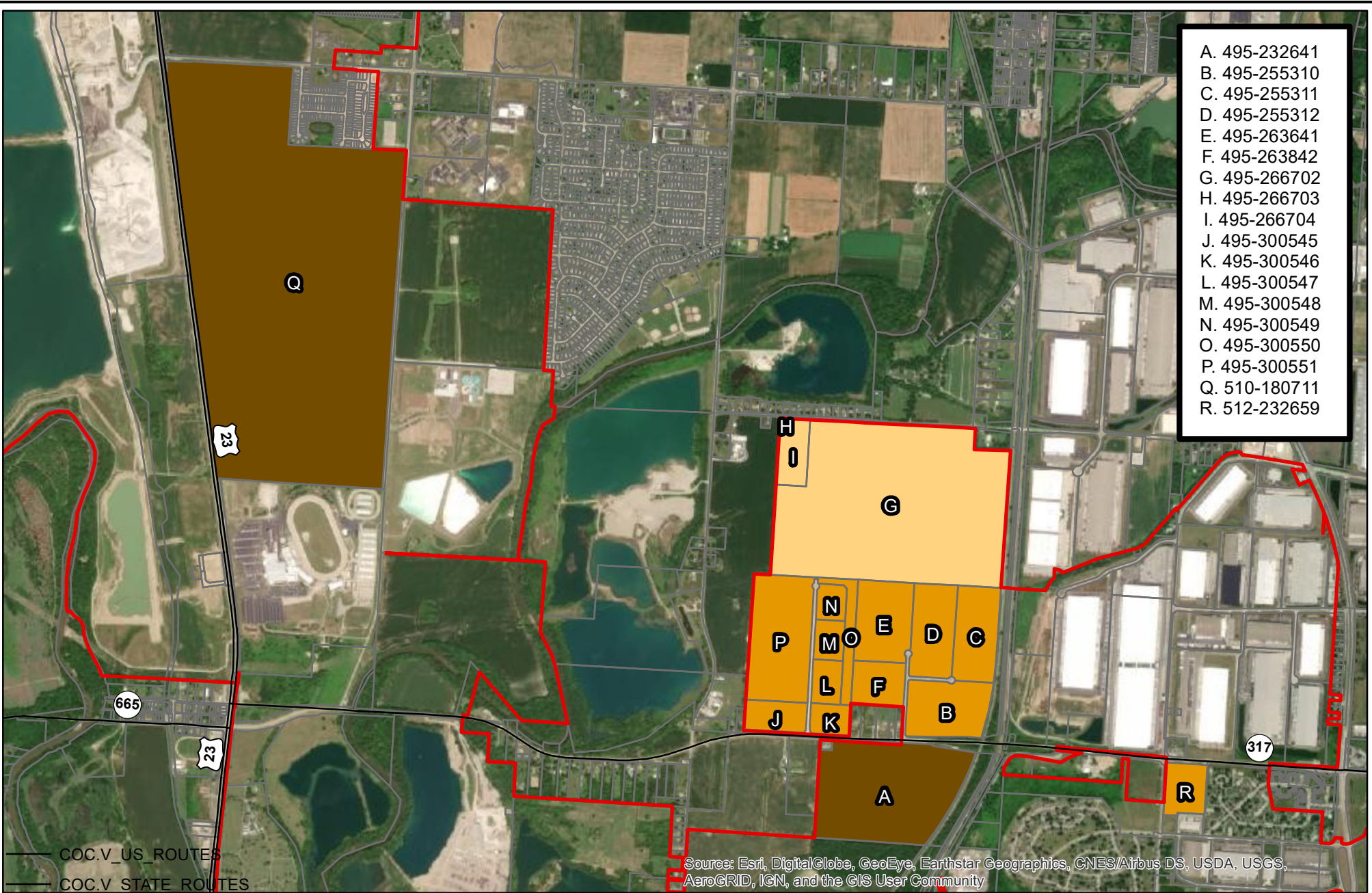


- A. 495-232641
- B. 495-255310
- C. 495-255311
- D. 495-255312
- E. 495-263641
- F. 495-263842
- G. 495-266702
- H. 495-266703
- I. 495-266704
- J. 495-300545
- K. 495-300546
- L. 495-300547
- M. 495-300548
- N. 495-300549
- O. 495-300550
- P. 495-300551
- Q. 510-180711
- R. 512-232659



Source: Esri, DigitalGlobe, GeoEye, Earthstar Geographics, CNES/Airbus DS, USDA, USGS, AeroGRID, IGN, and the GIS User Community

- Columbus Corporate Boundary
- Rickenbacker-317 TIF Parcels**
- "New Off-Site Parcels"
- (Original) Off-Site TIF "Parcels"
- (Original) Site TIF "Parcels"

Amended Exhibit A: Map of "Parcels" and "New Off-Site Parcels" for the Rickenbacker-317 TIF Expansion



THE CITY OF COLUMBUS
 ANDREW J. GINTHER, MAYOR
 DEPARTMENT OF DEVELOPMENT