

LOCATION MAP

PROPOSED ANNEXATION OF ± 1.37 AC. FROM MADISON TOWNSHIP TO THE CITY OF COLUMBUS

Situated in the State of Ohio, County of Franklin, Township of Madison, being part of Lot 14 of MACK-ANN SUBDIVISION (P.B. 29, PG. 47), and part of the Northeast Quarter of Section 12, Township 11, Range 21, Mathews Survey of Congress Lands.

This exhibit was prepared from record information from the Franklin County Engineer, Auditor and Recorder's offices, and is not intended for the transfer of real property.

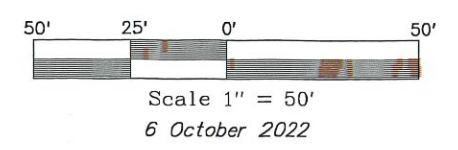
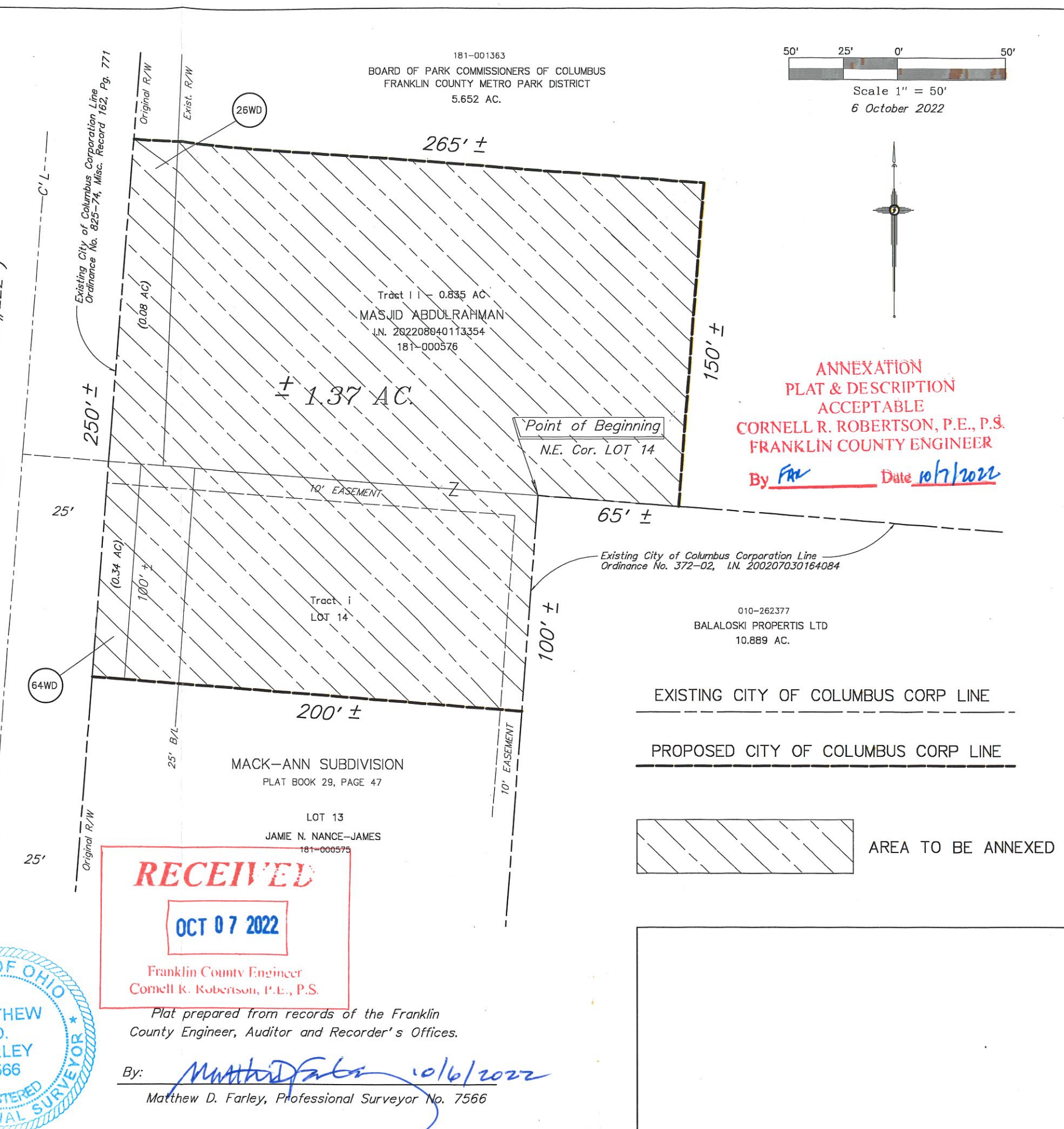
Total perimeter of annexation is 1,030 feet, of which 415 feet is contiguous with existing City of Columbus Corporation Line, having 40% contiguity.

26WD City of Columbus - 0.667 AC - O.R.V. 10744 I-15

64WD Franklin County Commissioners - 0.34 AC. - I.N. 200304170112961



GENDER ROAD (Co. Rd. #222)



**ANNEXATION
PLAT & DESCRIPTION
ACCEPTABLE**
CORNELL R. ROBERTSON, P.E., P.S.
FRANKLIN COUNTY ENGINEER
By FR Date 10/7/2022

010-262377
BALALOSKI PROPERTIS LTD
10.889 AC.

EXISTING CITY OF COLUMBUS CORP LINE

PROPOSED CITY OF COLUMBUS CORP LINE

AREA TO BE ANNEXED

RECEIVED
OCT 07 2022
Franklin County Engineer
Cornell R. Robertson, P.E., P.S.

Plat prepared from records of the Franklin County Engineer, Auditor and Recorder's Offices.

By: Matthew D. Farley 10/6/2022
Matthew D. Farley, Professional Surveyor No. 7566