

Balanced Growth Planning in the Olentangy Watershed

Balanced Growth is a “voluntary, incentive-based strategy to protect and restore [Ohio’s watersheds] to assure long-term economic competitiveness, ecological health, and quality of life.”

—BalancedGrowth.Ohio.gov

Communities and stakeholders directed the development of the Balanced Growth Plan for the Olentangy watershed. Balanced Growth Planning is a voluntary and incentive-based process that brings people together from across jurisdictional boundaries to create a broader vision for the watershed.

The final Balanced Growth Plan shows Priority Conservation Areas, Priority Development Areas, and Priority Agricultural Areas that have been designated by the Olentangy Watershed Planning Partnership. The plan also includes an Implementation Toolbox with information about selected tools that can assist communities with implementing the plan. The final plan does not create any requirements or regulations for partnership communities, but does include recommendations.

After confirming local support, the Mid-Ohio Regional Planning Commission (MORPC) will seek state endorsement for the plan, which will unlock state incentives for implementation.

Recommendations:

- Locally adopt plan
- Develop local comprehensive plan
- Update comprehensive plan every 3 to 5 years
- Incorporate Priority Areas into local community plans and zoning
- Integrate Implementation Tools where applicable and appropriate
- Continue participating in the Olentangy Watershed Planning Partnership

Implementation Toolbox:

- Comprehensive Planning
- Stormwater Management
- Low Impact Development
- Natural Areas Establishment
- Stream & Wetland Setbacks
- Woodland/Tree Canopy Protection
- Conservation Development
- Transfer of Development Rights
- Brownfield Redevelopment
- Exactions and Impact Fees
- Complete Streets
- Economic Development Programs
- Farmland Preservation
- Agricultural Conservation Programs
- 208 Planning

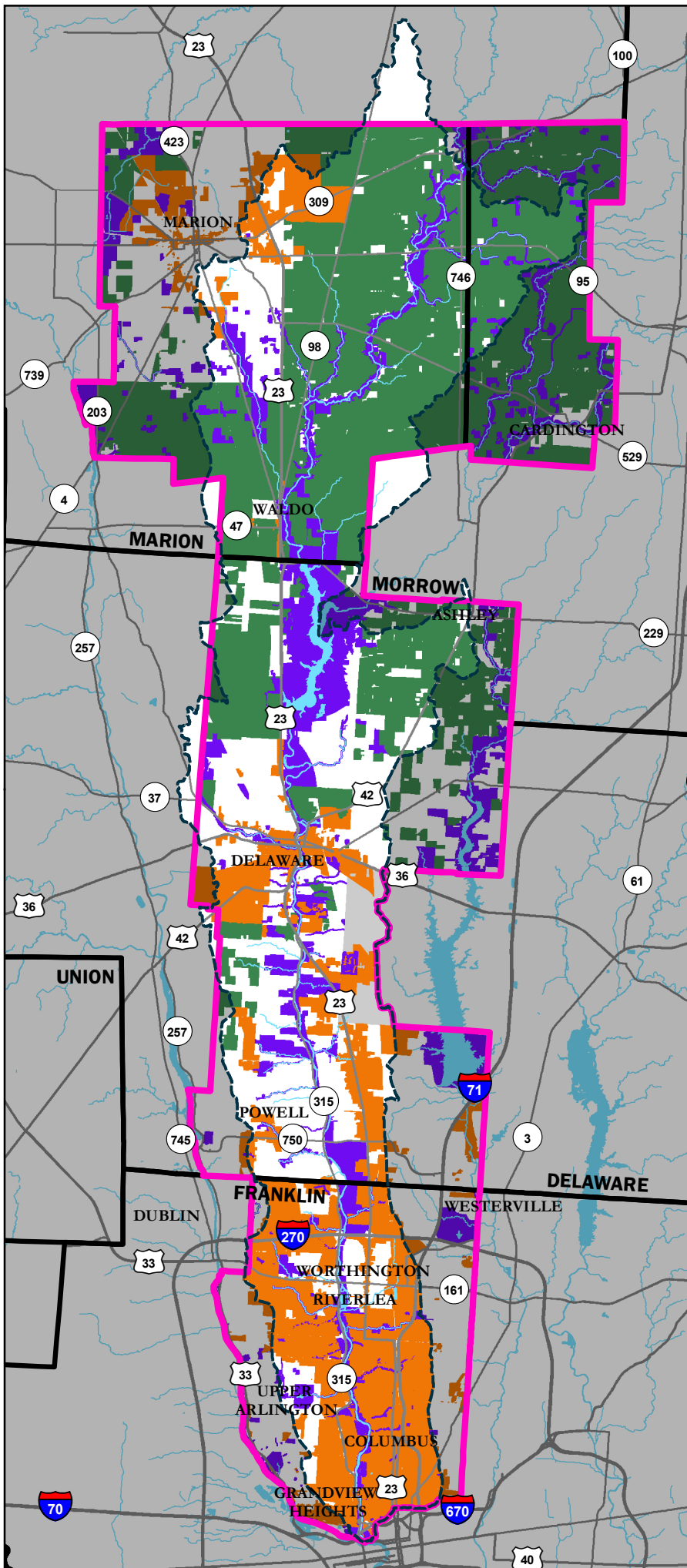
For more information, visit our website at balancedgrowthplanning.morpc.org

Olentangy Watershed

Priority Area Designations

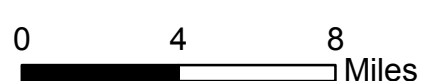
Participating Jurisdictions

Cities/Villages	Townships (County)
Columbus	Brown (Delaware)
Delaware	Canaan (Morrow)
Grandview Heights	Cardington (Morrow)
Marion	Claridon (Marion)
Powell	Clinton (Franklin)
Upper Arlington	Delaware (Delaware)
Worthington	Liberty (Delaware)
Ashley	Marion (Marion)
Riverlea	Marlboro (Delaware)
Waldo	Orange (Delaware)
	Oxford (Delaware)
	Perry (Franklin)
	Pleasant (Marion)
	Richland (Marion)
	Sharon (Franklin)
	Troy (Delaware)
	Waldo (Marion)



Legend

- Major Roads
- County Boundary
- Analysis Area
- OWPP Watershed Area
- Outside Planning Area
- Water
- Priority Agricultural Area
- Priority Conservation Area
- Priority Development Area



The information shown on this map is compiled from various sources made available to us which we believe to be reliable.
 N:\ArcGIS\Center for Energy&Environ\Olentangy Balanced Growth\Maps for OWPP Document\OWPP.mxd
 November 2011