

**LEGEND**

- PL Property Line
- R/W Right-of-Way
- Iron Pin Found (IPF)
- POC** Point of Commencement
- POB** Point of Beginning
- Existing Corporation Line
- Proposed Boundary Adjustment

**BOUNDARY ADJUSTMENT OF ±0.50 ACRES**

**FROM: THE CITY OF COLUMBUS**

**TO: THE CITY OF GRANDVIEW HEIGHTS**

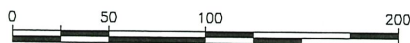
Situated in the State of Ohio, County of Franklin, in the City of Columbus, and being in Fractional Section 1, Township 1, Range 23, Congress Lands



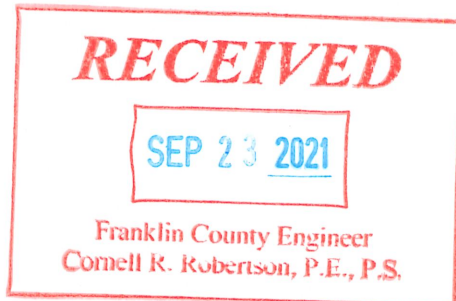
Location Map (N.T.S.)

LINE TABLE		
LINE	LENGTH	BEARING
1	10.0'	S86°24'17"E
2	60.0'	S03°35'43"W
3	350.0'	N86°24'17"W
4	60.0'	N03°35'43"E
5	280.0'	S86°24'17"E
6	10.0'	N03°40'27"E
7	60.0'	S86°24'17"E
8	10.0'	S03°40'27"W

**(A) BOARD OF COUNTY COMMISSIONERS**  
 D.B. 546, PG. 504  
 EAST ONE HALF OF RESERVE A  
 C.S. BARRETT'S SUBDIVISION  
 OF PART OF LOT 27 AND 28  
 OF CROUGHTON & DENMEAD'S  
 GRANDVIEW SUBURBAN SUBDIVISION  
 PLAT BOOK 10 PG. 295



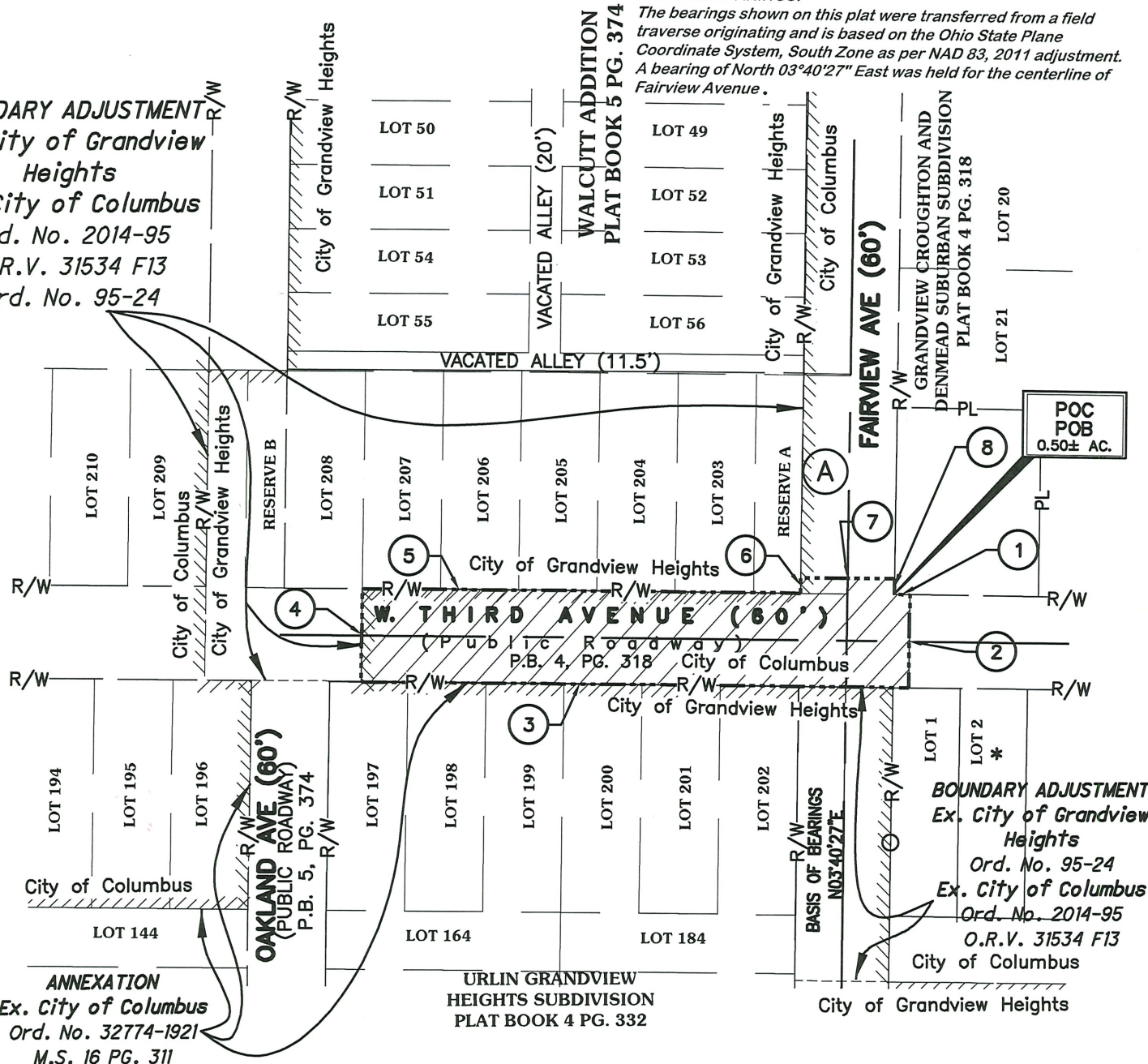
Scale: 1"=100'



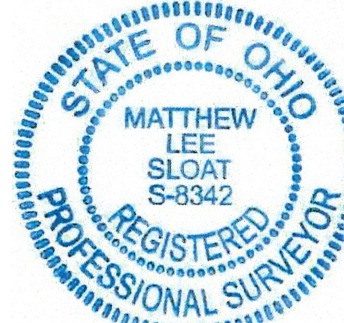
**BASIS OF BEARINGS:**

The bearings shown on this plat were transferred from a field traverse originating and is based on the Ohio State Plane Coordinate System, South Zone as per NAD 83, 2011 adjustment. A bearing of North 03°40'27" East was held for the centerline of Fairview Avenue.

**BOUNDARY ADJUSTMENT**  
 Ex. City of Grandview Heights  
 Ex. City of Columbus  
 Ord. No. 2014-95  
 O.R.V. 31534 F13  
 Ord. No. 95-24



**ANNEXATION  
 PLAT & DESCRIPTION  
 ACCEPTABLE**  
 CORNELL R. ROBERTSON, P.E., P.S.  
 FRANKLIN COUNTY ENGINEER  
 By PAR Date 9/23/2021



**CONTACT:**  
 880 KING AVENUE  
 COLUMBUS, OHIO 43212  
 (614) 299-2999  
 (614) 299-2992 (Fax)  
 www.EPFERRIS.com

BY: Matthew Lee Sloat 9/22/21  
 Matthew L. Sloat, P.E., P.S.  
 Registered Surveyor No. 8342  
 Date

JOB NO.	0581.205
DRAWN BY:	CK
CHECKED BY:	MLS
APPROVED BY:	MLS
DATE:	9-14-21