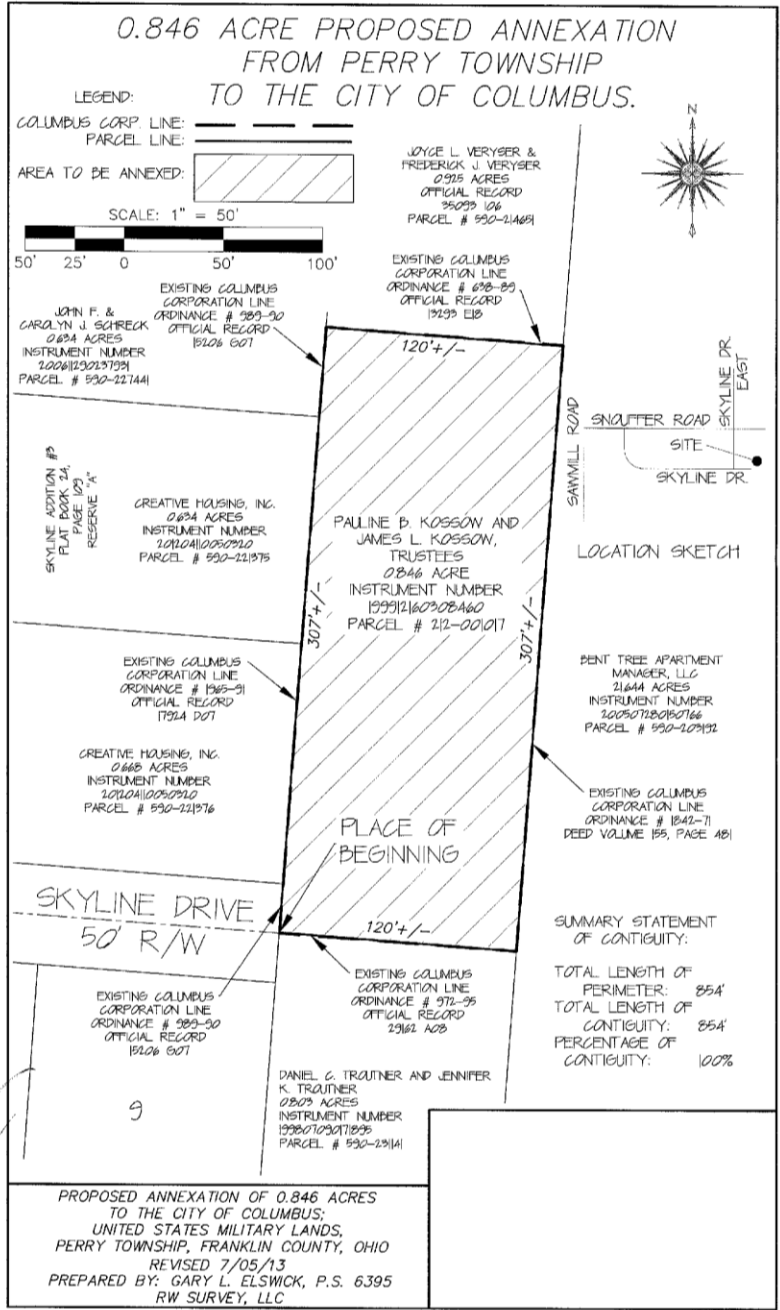


ANNEXATION AN13-007

± 0.846 Acres in Perry Township

Pauline B. & James L. Kossow, Trustees




RECEIVED

SEP 12 2013

Franklin County Engineer
Dean C. Ringle, R.E., P.S.

ANNEXATION
PLAT & DESCRIPTION
ACCEPTABLE
DEAN C. RINGLE, P.E., P.S.
FRANKLIN COUNTY ENGINEER
By BB Date 9/12/13



Gary Elswick

9-12-13