



Sanitary Sewer Easement Vacation
0.075 ACRES

Situated in the State of Ohio, County of Franklin, City of Columbus, being in Virginia Military Survey No. 7326, containing 0.075 acres, more or less, said 0.075 acres being part of that 4.434 acre tract in the name of Hartford Village Commons, as described in Instrument Number 200902190022456, and also part of that 1.039 acre Sanitary Sewer Easement, in the name of City of Columbus, as described in Instrument Number 200508190168830, all in Recorder's Office, Franklin County, Ohio.

Beginning, for reference, at the southeasterly corner of said 1.039 acre Sanitary Sewer Easement, also being the southeasterly corner of said 4.434 acre tract of land;

Thence on the common easterly line of said 1.039 acre Sanitary Sewer Easement, and said 4.434 acre tract, North 03°51'52" East, a distance of 342.70 feet to a point;

Thence departing said common easterly line and across said 1.039 acre Sanitary Sewer Easement and said 4.434 acre tract, North 86°12'29" West, a distance of 25.00 feet, to a point on the westerly line of said 1.039 acre Sanitary Sewer Easement, being the **True Point of Beginning** of the tract herein being described;

Thence along the perimeter of said 1.039 acre Sanitary Sewer Easement the following five (5) calls:

1. North 86°12'29" West, a distance of 91.57 feet, to a point;
2. North 03°47'31" East, a distance of 5.00 feet, to a point;
3. North 86°12'29" West, a distance of 49.65 feet, to a point;
4. North 03°47'31" East, a distance of 20.00 feet, to a point;
5. South 86°12'29" East, a distance of 141.25 feet, to a point;

Thence departing said perimeter, South 03°51'52" West, a distance of 25.00 feet, to the **True Point of Beginning**, containing 0.075 acres, more or less.

 4/7/14
John J. Raab P.S. 7863 Date:





NORTH

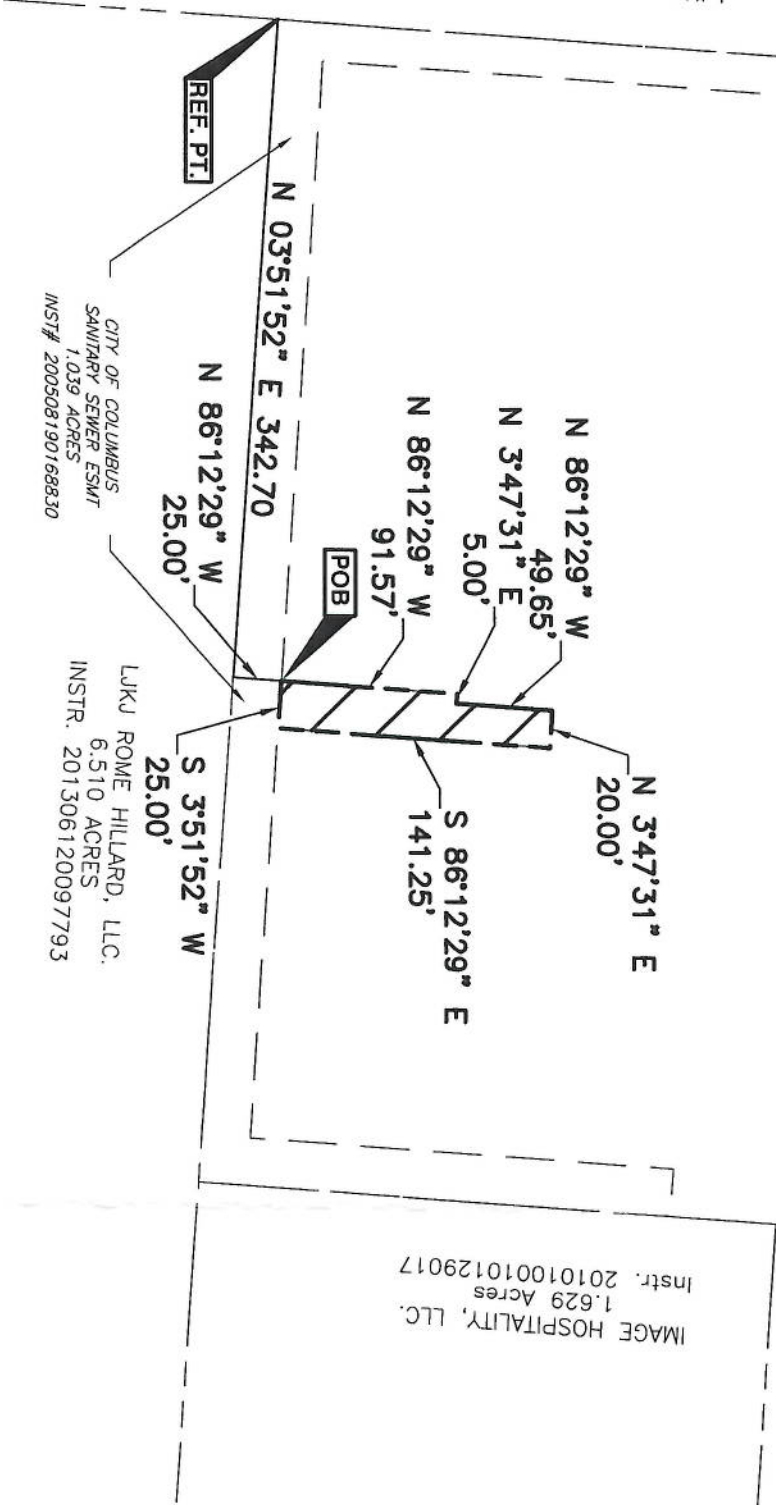
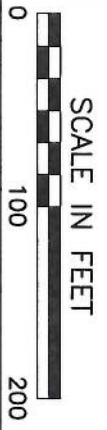
EASEMENT VACATION

VIRGINIA MILITARY SURVEY 7326

HARTFORD VILLAGE COMMONS
4.434 Acres
Instr. 200902190022456

IMAGE HOSPITALITY, LLC.
1.629 Acres
Instr. 201010010129017

LJKU ROME HILLARD, LLC. ETAL.
INSTR. 201212190195037



0.075 ACRES



John Jeffrey
CIVIL & ENVIRONMENTAL CONSULTANTS, INC.
JOHN J. RAAB
PROFESSIONAL SURVEYOR NO.: 7863



Civil & Environmental Consultants, Inc.
8740 Orion Place, Suite 100 - Columbus, OH 43240
614-540-6633 · 888-598-6808
www.cecinc.com

**SANITARY SEWER
EASEMENT VACATION**
Situate in
CITY OF COLUMBUS
FRANKLIN COUNTY AND STATE OF OHIO
Made For
VILLAGE COMMUNITIES REAL ESTATE, INC.

DATE:	APRIL 2014	SCALE:	1" = 100'	DRAWING NO.:	
DRAWN BY:	BA	CHECKED BY:	JJR		
PROJECT NO:	140-084	APPROVED BY:	JAM	SHEET	1 OF 1



25' Sanitary Sewer Easement Vacation
0.126 ACRES

Situated in the State of Ohio, County of Franklin, City of Columbus, being in Virginia Military Survey No. 7326, containing 0.126 acres, more or less, said 0.126 acres being part of that 4.434 acre tract in the name of Hartford Village Commons, as described in Instrument Number 200902190022456, and also part of that 1.039 acre Sanitary Sewer Easement, in the name of City of Columbus, as described in Instrument Number 200508190168830, all in Recorder's Office, Franklin County, Ohio.

Beginning, for reference, at the southeasterly corner of said 1.039 acre Sanitary Sewer Easement, also being the southeasterly corner of said 4.434 acre tract of land;

Thence on the common easterly line of said 1.039 acre Sanitary Sewer Easement, and said 4.434 acre tract, North 03°51'52" East, a distance of 582.52 feet to a point;

Thence departing said common easterly line, and across said 1.039 acre Sanitary Sewer Easement, and said 4.434 acre tract, North 86°14'30" West, a distance of 25.00 feet, to a point on the westerly line of said 1.039 acre Sanitary Sewer Easement, being the **True Point of Beginning** of the tract herein being described;

Thence along the perimeter of said 1.039 acre Sanitary Sewer Easement the following three (3) calls:

1. North 86°14'30" West, a distance of 220.00 feet, to a point;
2. North 03°45'30" East, a distance of 25.00 feet, to a point on the northerly line of said 4.434 acre tract;
3. South 86°14'30" East, along said northerly line, a distance of 220.05 feet, to a point;

Thence departing said perimeter and said northerly line, South 03°51'52" West, a distance of 25.00 feet, to the **True Point of Beginning**, containing 0.126 acres, more or less.

 4/7/14
John J. Raab P.S. 7863 Date:



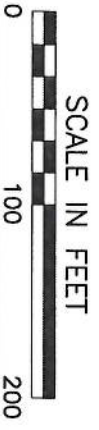
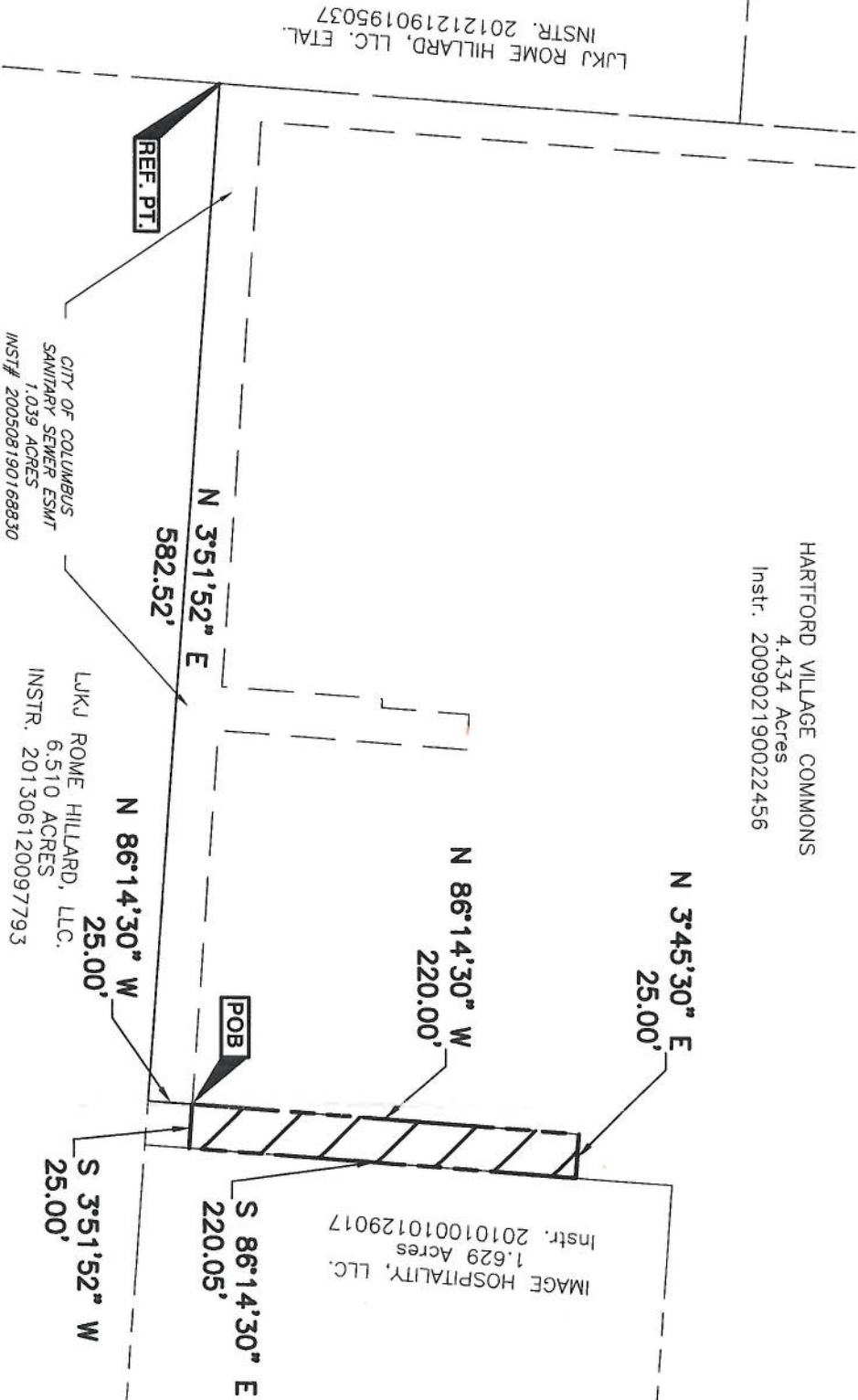


NORTH

EASEMENT VACATION

VIRGINIA MILITARY SURVEY 7326

HARTFORD VILLAGE COMMONS
4.434 Acres
Instr. 200902190022456



0.126 ACRES



John Jeffrey
4/7/14
CIVIL & ENVIRONMENTAL CONSULTANTS, INC.
JOHN J. RAAB
PROFESSIONAL SURVEYOR NO.: 7863



Civil & Environmental Consultants, Inc.
8740 Orion Place, Suite 100 - Columbus, OH 43240
614-540-6633 · 888-598-6808
www.cecinc.com

25' SANITARY SEWER
EASEMENT VACATION
Situate In
CITY OF COLUMBUS
FRANKLIN COUNTY AND STATE OF OHIO
Made For
VILLAGE COMMUNITIES REAL ESTATE, INC.

DATE:	APRIL 2014	SCALE:	1" = 100'	DRAWING NO.:	
DRAWN BY:	BA	CHECKED BY:	JJR		
PROJECT NO.:	140-084	APPROVED BY:	JAM	SHEET	1 OF 1