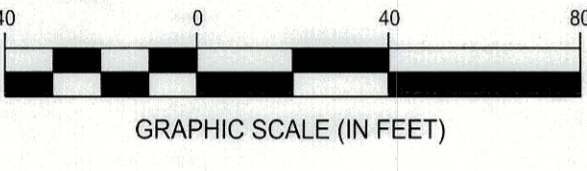
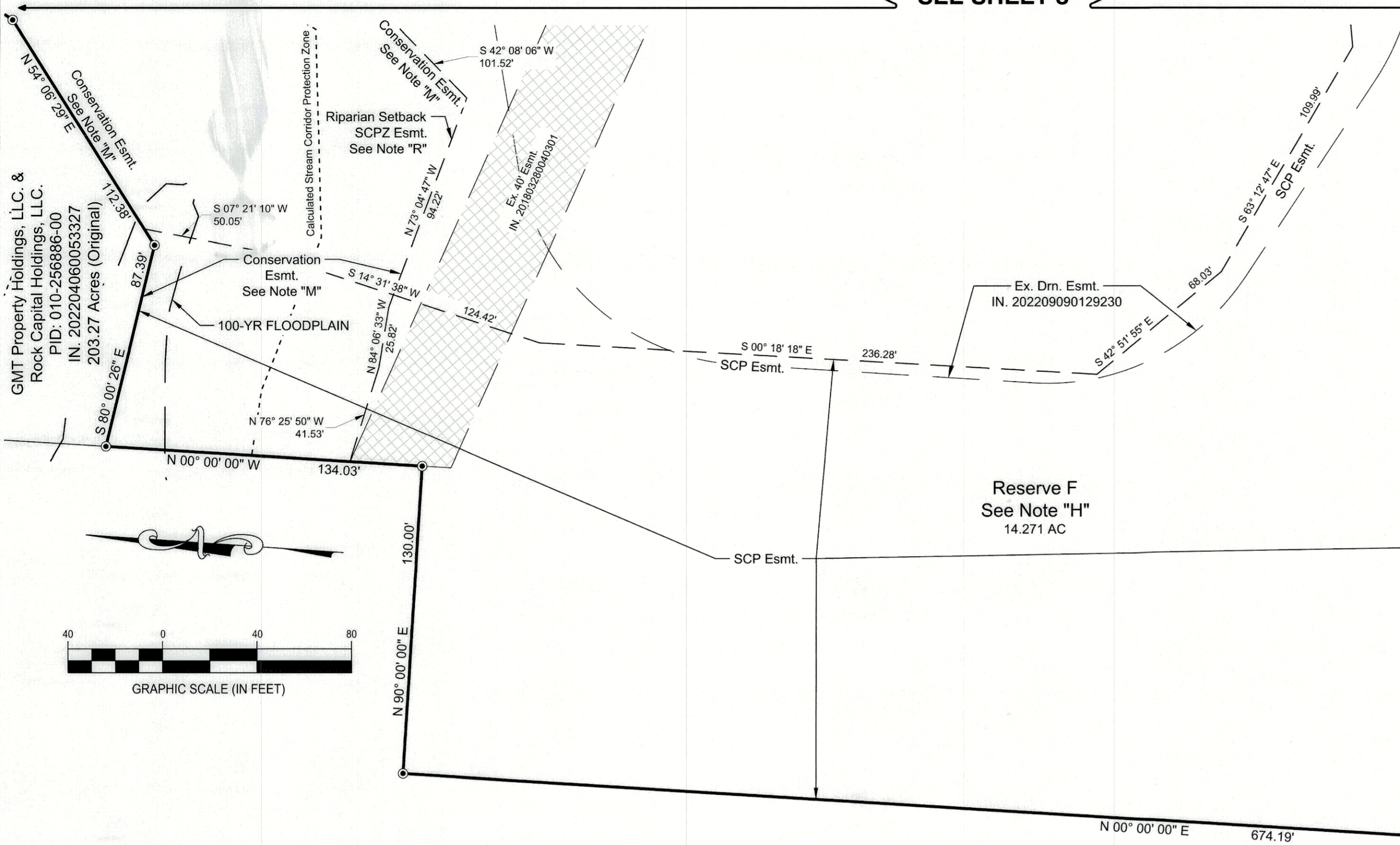
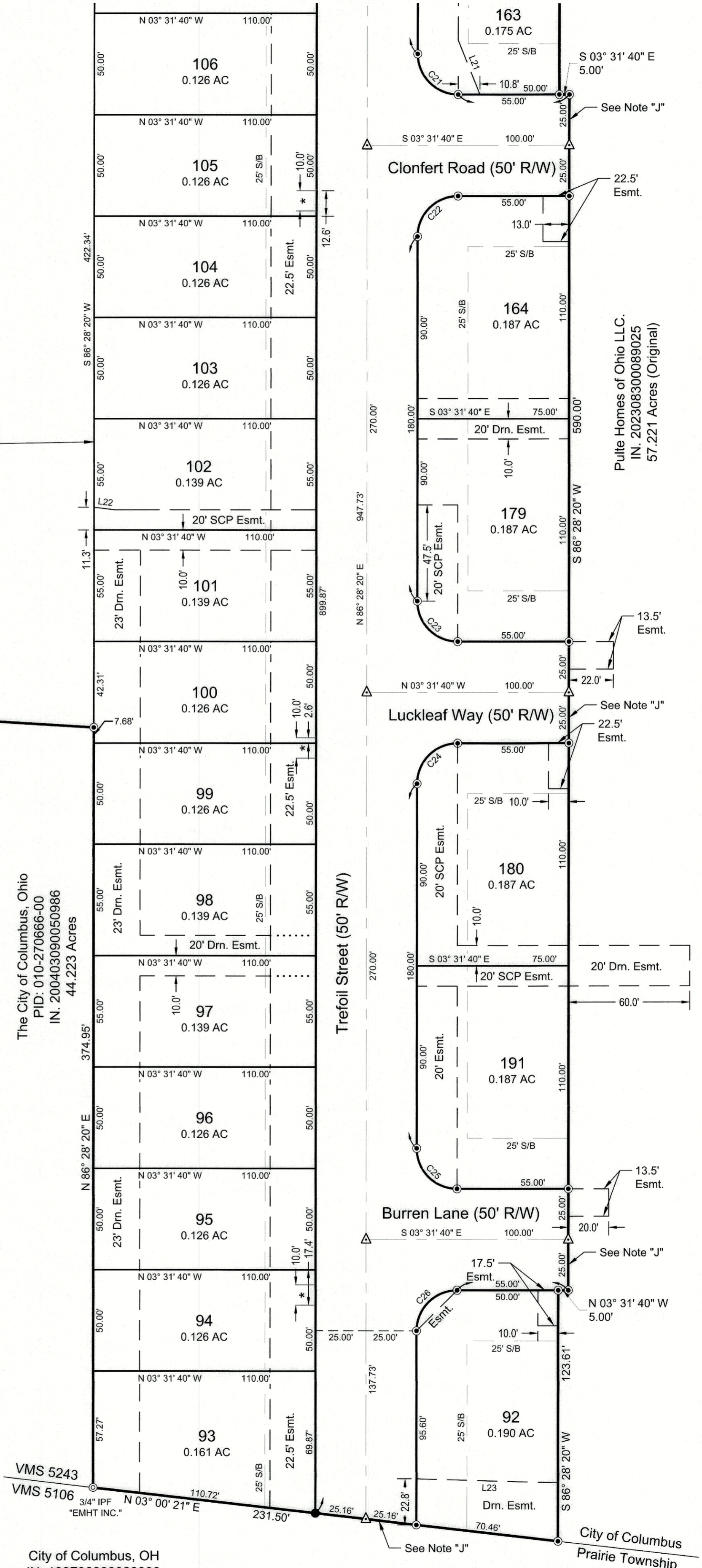


SEE SHEET 3

SEE SHEET 4



- CESO IRON PIN LEGEND**
- ⊙ IRON PIN FOUND AS DESCRIBED
 - IRON PIN SET (5/8"x30" REBAR W/ CESO CAP)
 - △ MAG NAIL SET
 - PERMANENT MARKER SET (1"x30" REBAR W/ ALUMINUM CESO CAP)
- CESO LEGEND**
- ⊠ EXISTING EASEMENT TO BE VACATED (SEE NOTE "K")
 - * NO VEHICULAR ACCESS (SEE NOTE "I")



**CLOVER RUN SECTION 2,
 PART 1**
 STATE OF OHIO, COUNTY OF FRANKLIN, CITY OF COLUMBUS,
 VIRGINIA MILITARY SURVEY NO. 5243

Revisions / Submissions		
ID	Description	Date

Project Number: 760461
 Scale: 1"=40'
 Drawn By: APC
 Checked By: ALB
 Date: August 16, 2024
 Issue:

Drawing Title:
PLAT

5 of 5

I:\ceso\local\l\ood\data\PROJECT\SIKIMLEY_HORN\760461_CloverRun-Columbus-OH\04-SURVEY\DWG\760461-KH-CLOVER RUN-PLAT-SEC 2 Phase A.dwg - 8/16/2024 - Andreas Chevalier