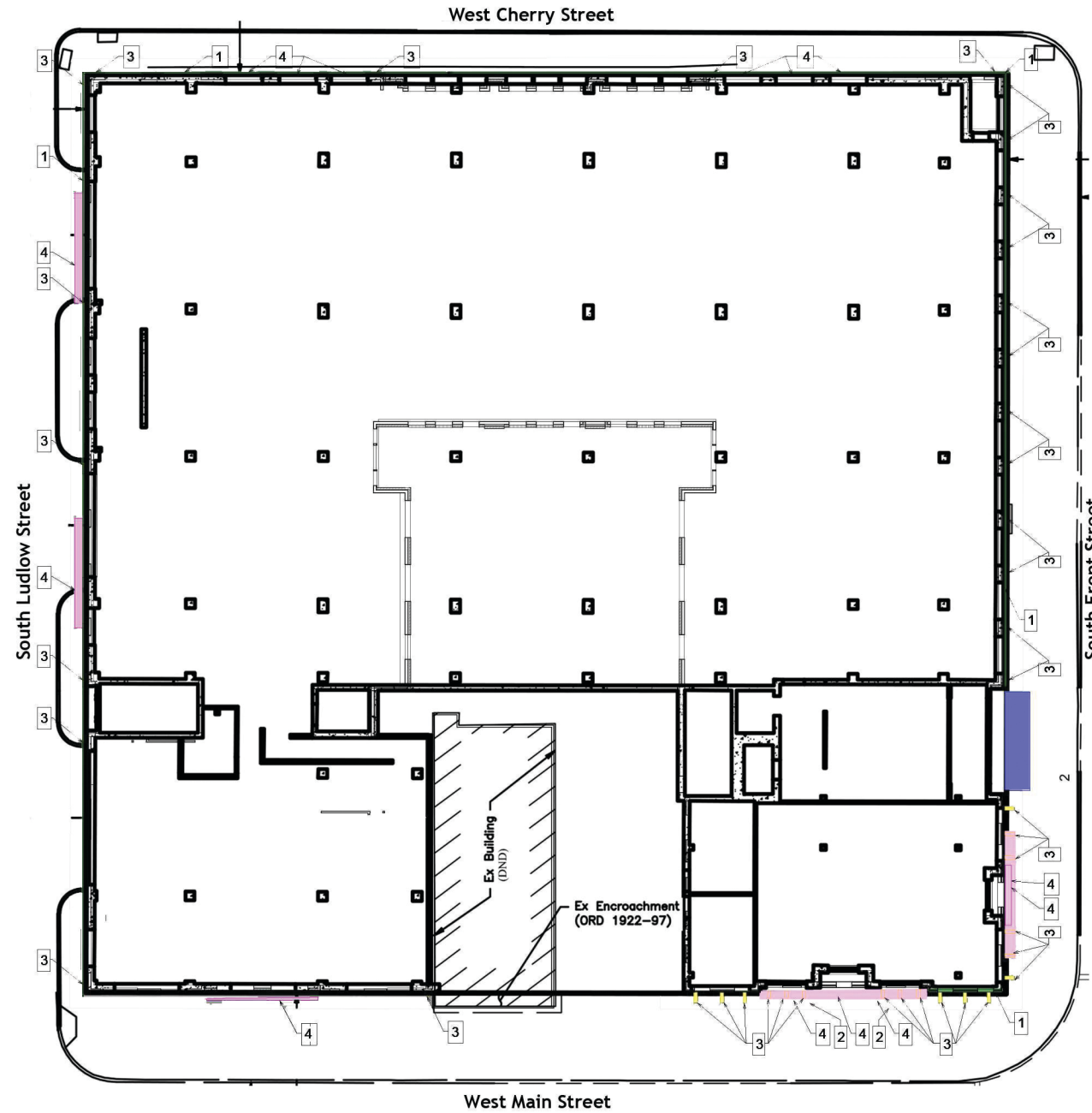


# MATAN PROPERTY R.O.W. ENCROACHMENT STUDY



\*Wall-Mounted Lights along W. Cherry St to be a Min. vertical distance of 8' from sidewalk

R.O.W. Encroachment Legend								
ID	Description of Encroachment	Total # of Encroachments	South Front St. Dist. (Max)	West Main St. Dist. (Max)	South Ludlow St. Dist. (Max)	West Cherry St. Dist. (Max)	Bottom of Encroachment	Top of Encroachment
1	Cornice	12	2"	6"	2"	4.75"	Varies, See Arch. Elevs	Varies, See Arch. Elevs
2	Metal Canopy	3	5'-0"	2'-8"	NA	NA	757'-2"	758'-0"
3	Wall Mounted Light	48	2'-0"	2'-8"	6"	6"*	Varies, See Arch. Elevs	Varies, See Arch. Elevs
4	Balcony/Railing	29	1'-9"	2'-4"	1'-9"	0"	Varies, See Arch. Elevs	Varies, See Arch. Elevs

**MATAN PROPERTY R.O.W. ENCROACHMENT STUDY**  
North Elevation - West Cherry Street



# MATAN PROPERTY R.O.W. ENCROACHMENT STUDY

South Elevation - West Main Street



# MATAN PROPERTY R.O.W. ENCROACHMENT STUDY

East Elevation - South Front Street



# MATAN PROPERTY R.O.W. ENCROACHMENT STUDY

West Elevation - South Ludlow Street

