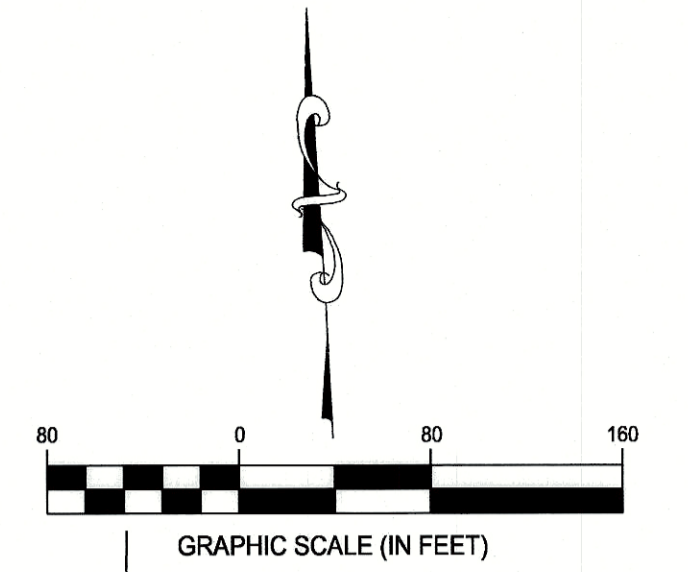
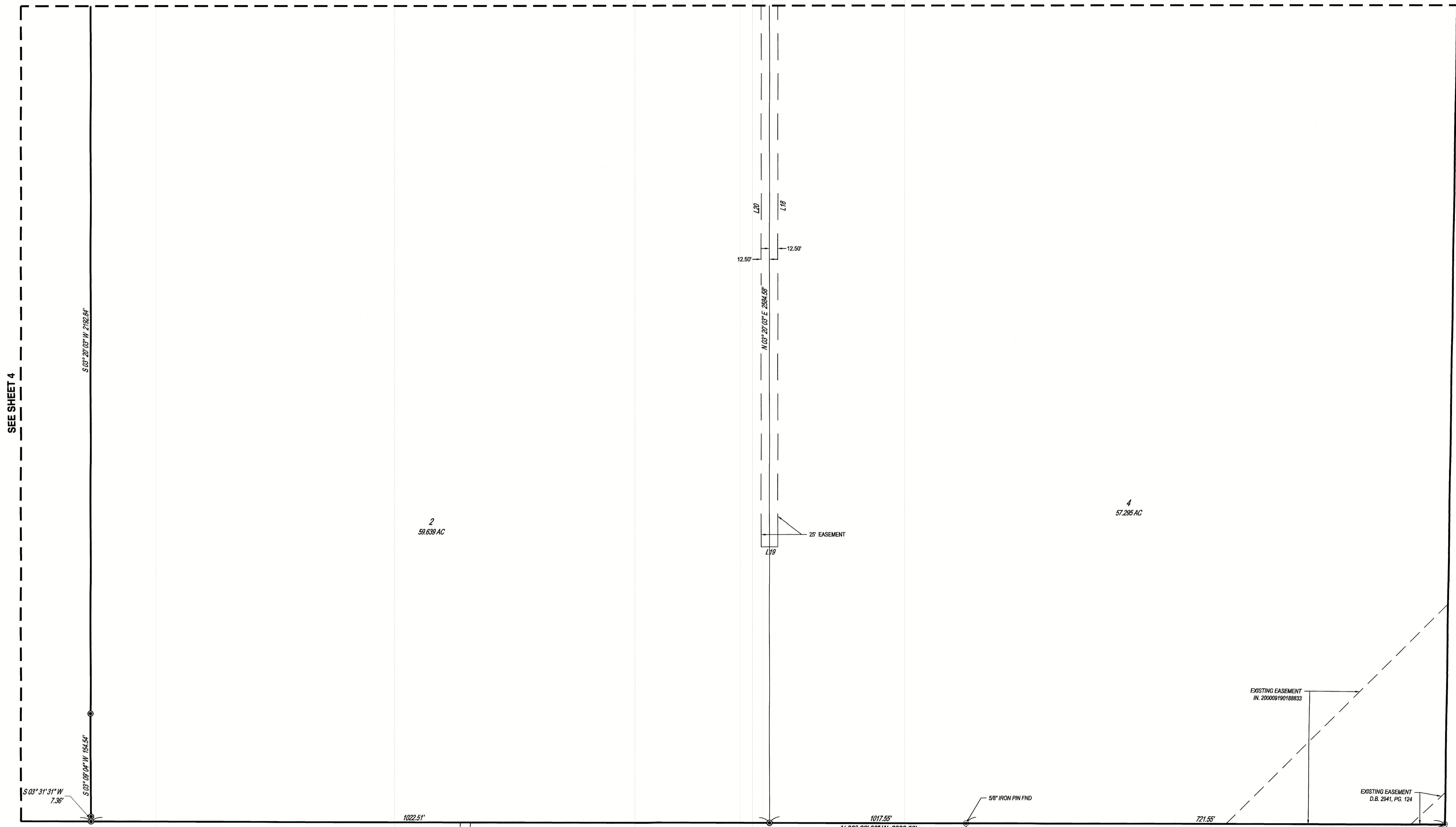


**1489 ROHR**  
 STATE OF OHIO, COUNTY OF FRANKLIN, CITY OF COLUMBUS,  
 NORTH HALF SECTION 35, TOWNSHIP 4 NORTH, RANGE 22 WEST

SEE SHEET 6



Line Table		
Line #	Direction	Length
L18	S03° 20' 03"W	1979.30'
L19	N86° 39' 57"W	25.00'
L20	N03° 20' 03"E	1979.30'



CHESAPEAKE AND OHIO RAILWAY COMPANY  
 AS CONVEYED FROM THE CHESAPEAKE AND HOCKING VALLEY RAILWAY CO.  
 BY DEED RECORDED IN DEED BOOK 523 PAGE 390, NOW KNOWN AS CSX  
 TRANSPORTATION INCORPORATED, WHOSE MERGER DOCUMENTS  
 HAVE BEEN SUMMARIZED AND RECORDED AS DEED BOOK 13283  
 AND SUBSEQUENTLY RECORDED AS OFFICIAL RECORD 13283, PAGE 013.

EASTPORT BUSINESS PARK  
 LOT 4  
 P.B. 95, PG. 59  
 AMERISOURCEBERGEN DRUG CORPORATION  
 IN. 200312230402289  
 PID: 495-263641  
 28.631 ACRES

EASTPORT BUSINESS PARK  
 LOT 3  
 P.B. 95, PG. 59  
 FINLAYSON LOGISTICS ASSETS LLC  
 IN. 201805020057765  
 PID: 495-255312  
 23.788 ACRES

EASTPORT BUSINESS PARK  
 LOT 2  
 P.B. 95, PG. 59  
 THOMSON LOGISTICS ASSETS LLC  
 IN. 201805020057766  
 PID: 495-255311  
 26.145 ACRES

- CESO IRON PIN LEGEND**
- IRON PIN FOUND
  - ⊙ IRON PIN TO BE SET (5/8"x30" REBAR W/ CESO CAP)
  - △ MAG NAIL SET
  - PERMANENT MARKER SET (1"x30" REBAR W/ ALUMINUM CESO CAP)
  - FRANKLIN COUNTY MONUMENT
  - ◇ MAG NAIL FOUND

**1489 ROHR ROAD**

CITY OF COLUMBUS  
FRANKLIN COUNTY, OHIO

SCALE: 1"=80'      DATE: 07/15/2021

DESIGN:	N/A	JOB NO.:	758468
DRAWN:	ADB	SHEET NO.:	5 OF 6
CHECKED:	ALB		

  
 WWW.CESOINC.COM