

PROPOSED PARCEL DATA TABLE No.1

LOT No.	AREA (AC)	AREA (SF)
Lot 1	0.056	2,453.47
Lot 2	0.044	1,895.04
Lot 3	0.044	1,895.04
Lot 4	0.044	1,895.04
Lot 5	0.056	2,418.52
Lot 6	0.086	3,757.94
Lot 7	0.068	2,941.95
Lot 8	0.068	2,941.95
Lot 9	0.150	6,536.40
Lot 10	0.085	3,722.54
Lot 11	0.067	2,938.99
Lot 12	0.067	2,938.99
Lot 13	0.150	6,529.83
Lot 14	0.079	3,459.70
Lot 15	0.064	2,767.41
Lot 16	0.064	2,766.90
Lot 17	0.141	6,147.47
Lot 18	0.100	4,357.37
Lot 19	0.070	3,057.11
Lot 20	0.070	3,060.70
Lot 21	0.118	5,132.80
Lot 22	0.097	4,231.78
Lot 23	0.070	3,050.28
Lot 24	0.070	3,050.28
Lot 25	0.121	5,280.15
Lot 26	0.095	4,149.21
Lot 27	0.070	3,034.92
Lot 28	0.070	3,031.23
Lot 29	0.121	5,270.66
Lot 30	0.217	9,467.64
Lot 31	0.061	2,653.77
Lot 32	0.061	2,654.03
Lot 33	0.061	2,654.12
Lot 34	0.061	2,654.21
Total Table No.1	2.865	124,797.44

PROPOSED PARCEL DATA TABLE No.2

LOT No.	AREA (AC)	AREA (SF)
Lot 35	0.076	3,297.33
Lot 36	0.127	5,550.56
Lot 37	0.066	2,874.47
Lot 38	0.066	2,875.21
Lot 39	0.066	2,875.77
Lot 40	0.066	2,876.33
Lot 41	0.221	9,612.26
Lot 42	0.093	4,066.27
Lot 43	0.074	3,207.15
Lot 44	0.074	3,207.15
Lot 45	0.074	3,207.15
Lot 46	0.074	3,207.61
Lot 47	0.120	5,242.41
Lot 48	0.113	4,920.69
Lot 49	0.074	3,207.15
Lot 50	0.074	3,207.15
Lot 51	0.074	3,207.15
Lot 52	0.074	3,207.15
Lot 53	0.113	4,905.84
Lot 54	0.111	4,815.86
Lot 55	0.074	3,207.15
Lot 56	0.074	3,207.15
Lot 57	0.074	3,207.15
Lot 58	0.074	3,207.15
Lot 59	0.110	4,785.69
Reserve A	0.834	36,338.95
Reserve B	0.571	24,893.57
Reserve C	0.150	6,544.49
Reserve D	0.071	3,079.08
Reserve E	0.025	1,094.25
Reserve F	0.965	42,030.08
Total Table No.2	2.865	124,797.44
Road R/W Dedicated	0.103	4,479.11
Total	7.815	340,441.92

PROPOSED R/W (DEDICATED) DATA TABLE

STREET	AREA (AC)	AREA (SF)
Chatterton Road	0.103	4,479.11
Total	0.103	4,479.11

PARCEL CURVE TABLE

Curve #	DELTA	RADIUS	LENGTH	CHORD BEARING	CHORD DISTANCE
C1	090°09'26"	20.00'	31.47'	N 49°38'21" E	28.32'
C2	089°50'34"	20.00'	31.36'	S 40°21'39" E	28.25'
C3	090°09'26"	20.00'	31.47'	N 49°38'21" E	28.32'
C4	021°26'16"	53.00'	19.83'	S 71°40'55" E	19.72'
C5	089°53'13"	20.00'	31.38'	N 40°20'20" W	28.26'
C6	090°06'47"	20.00'	31.46'	N 49°39'40" E	28.31'
C7	002°52'53"	53.00'	2.67'	S 83°50'29" E	2.67'

SANITARY SEWER EASEMENT LINE DATA TABLE

LINE #	BEARING	DISTANCE
L1	N 85°25'12" W	6.66'
L2	N 04°24'44" E	49.96'
L3	N 85°37'12" W	13.74'
L4	N 04°33'38" E	25.00'
L5	S 85°37'12" E	13.90'
L6	N 04°34'48" E	70.04'
L7	S 85°25'12" E	25.00'
L8	S 04°34'48" W	145.00'
L9	N 85°25'12" W	18.34'

STORM SEWER EASEMENT LINE DATA TABLE

LINE #	BEARING	DISTANCE
L10	N 85°26'22" W	20.17'
L11	N 12°00'21" E	164.28'
L12	N 85°22'40" W	223.33'
L13	N 04°43'04" E	20.00'
L14	S 85°22'40" E	234.67'
L15	S 85°23'38" E	320.61'
L16	S 04°36'22" W	20.00'
L17	N 85°23'38" W	311.83'
L18	S 12°00'21" W	164.26'

SCP EASEMENT LINE DATA TABLE

LINE #	BEARING	DISTANCE
L19	N 04°12'57" E	103.90'
L20	N 55°06'59" E	31.46'
L21	S 85°19'02" E	181.35'
L22	N 11°47'23" E	15.43'
L23	N 24°43'38" E	41.97'
L24	S 59°22'38" E	16.36'
L25	S 04°33'38" W	171.02'
L26	N 85°26'22" W	236.13'

SANITARY SEWER EASEMENT LINE DATA TABLE

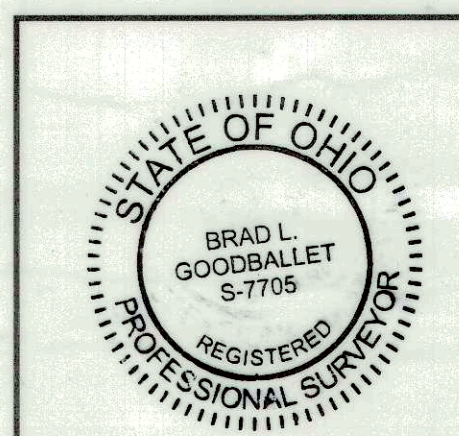
LINE #	BEARING	DISTANCE
L30	S 04°33'38" W	8.15'
L31	N 85°27'51" W	182.12'
L32	N 04°33'38" E	8.22'
L33	S 85°26'22" E	182.12'

STORM SEWER EASEMENT LINE DATA TABLE

LINE #	BEARING	DISTANCE
L27	S 04°33'38" W	30.47'
L28	N 50°48'45" W	17.31'
L29	N 39°11'15" E	25.07'

STORM SEWER EASEMENT LINE DATA TABLE

LINE #	BEARING	DISTANCE
L34	N 86°01'59" W	26.44'
L35	N 03°58'01" E	20.00'
L36	S 86°01'59" E	26.64'
L37	S 04°33'38" W	20.00'



No.	Date	Description	By	No.	Date	Description	By	No.	Date	Description	By



5910 Wilcox Place, Suite A
Dublin, Ohio 43016
Phone: 614-395-1661
Fax: 412-264-4400
email: info@lsse.com

Filename: 308329sub.dwg
Date: 03/11/2025

Maronda Homes
5900 Wilcox Place
Dublin, Ohio 43016

Chatterton Commons
Plat of Subdivision
Part of Half Section No. 45, T-12N, R-21W,
Refugee Lands
City of Columbus, County of Franklin, State of Ohio

Sheet Title: LOT AREA, CURVE AND LINE TABLES
Drawing No.: 308-329-4
Sheet No.: 4 of 4