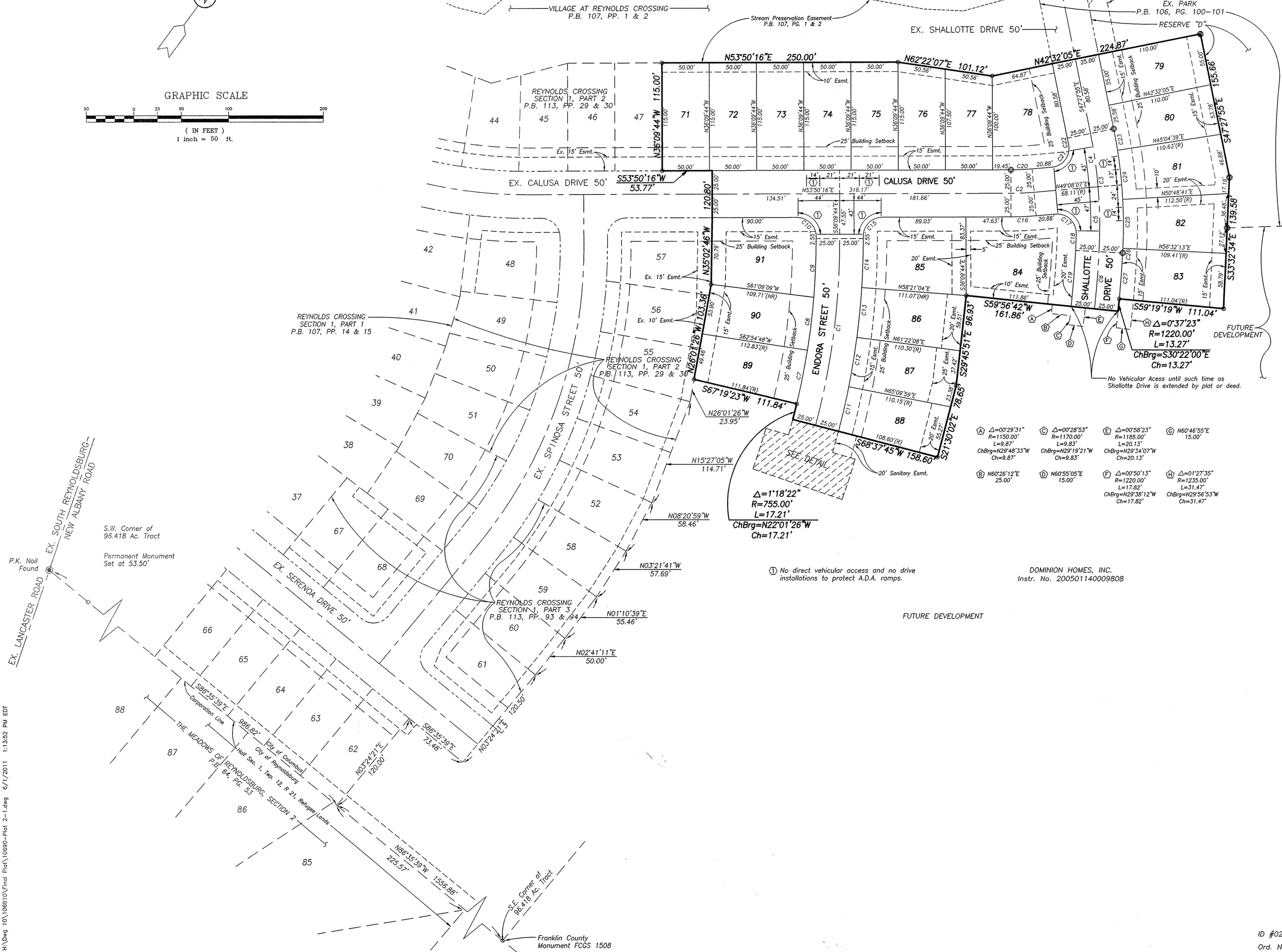
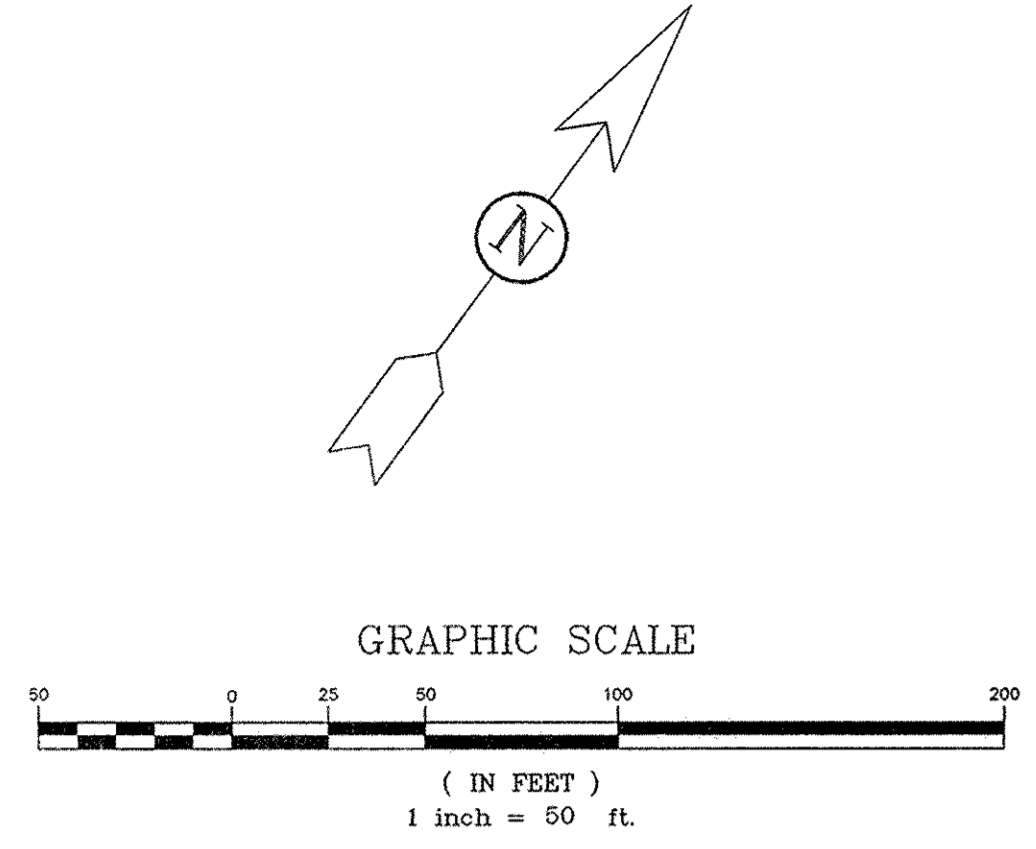


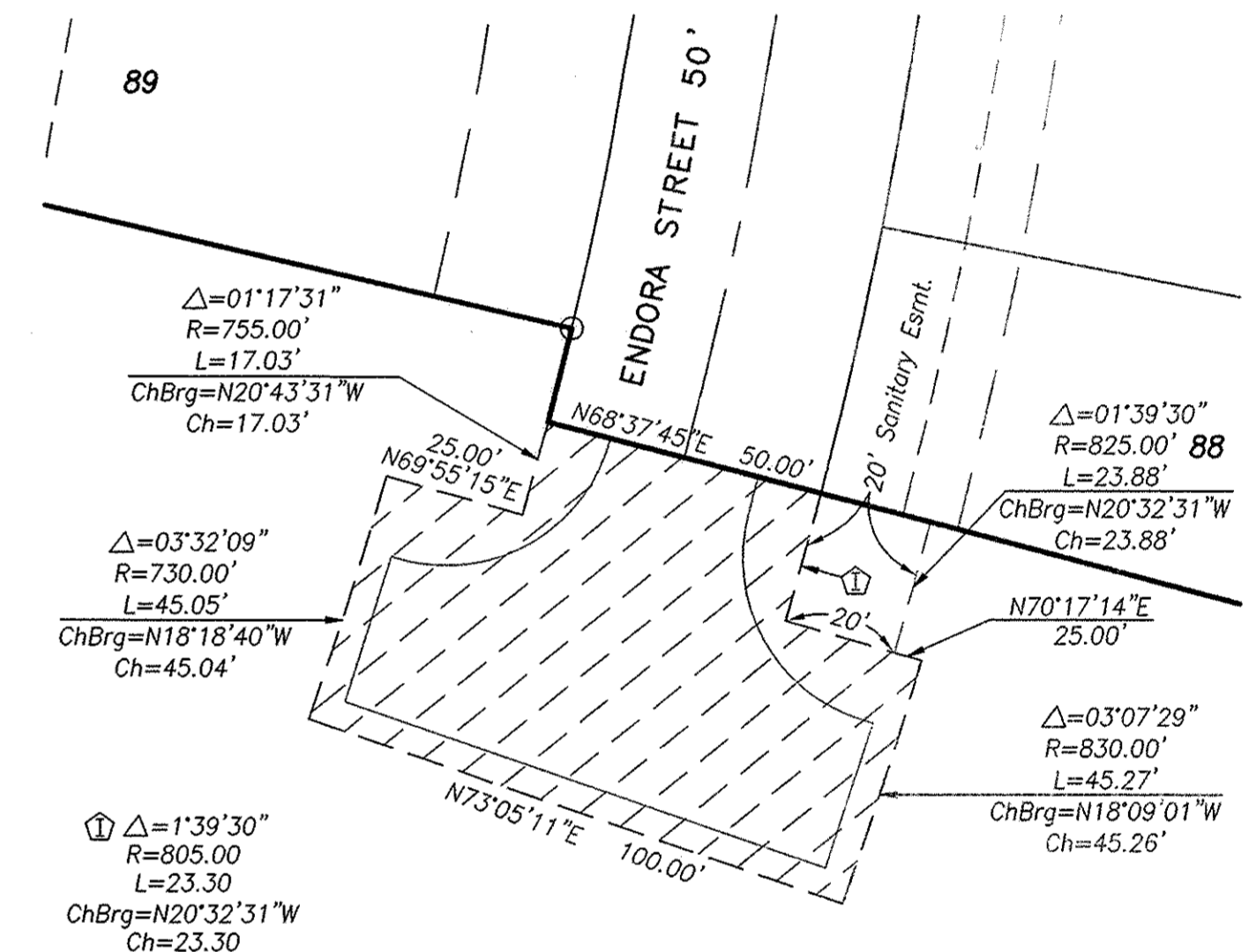
REYNOLDS CROSSING SECTION 2 PART 1

SHEET 2 OF 2 SHEETS



CURVE TABLE							
C/L DATA	CURVE	DELTA	RADIUS	TANGENT	LENGTH	CHORD	CHORD BRG
Endora Street	C1	14°47'29"	780.00'	101.24'	201.36'	200.80'	N28°45'59"W
Calusa Drive	C2	4°42'09"	300.00'	12.32'	24.62'	24.62'	N51°29'11"E
Shalotte Drive	C3	14°29'13"	500.00'	63.55'	126.42'	126.09'	N40°13'18"W
Shalotte Drive	C4	6°36'02"	500.00'	28.83'	57.60'	57.57'	N44°09'54"W
Shalotte Drive	C5	7°53'11"	500.00'	34.47'	68.82'	68.77'	N36°55'17"W
Shalotte Drive	C6	2°55'23"	1193.00'	30.49'	60.97'	60.96'	N31°31'00"W

CURVE TABLE							
LOT NUMBER	CURVE	DELTA	RADIUS	TANGENT	LENGTH	CHORD	CHORD BRG
89	C7	4°24'35"	755.00'	29.07'	58.11'	58.09'	N24°52'55"W
90	C8	4°20'59"	755.00'	28.67'	57.32'	57.31'	N29°15'42"W
91	C9	4°43'32"	755.00'	31.15'	62.27'	62.25'	N33°47'58"W
91	C10	90°00'00"	20.00'	20.00'	31.42'	28.28'	N81°09'44"W
88	C11	3°27'46"	805.00'	24.33'	48.65'	48.65'	N26°06'08"W
87	C12	3°49'51"	805.00'	26.69'	53.36'	53.34'	N26°43'56"W
86	C13	3°49'17"	805.00'	26.86'	53.69'	53.68'	N30°32'31"W
85	C14	3°42'34"	805.00'	26.07'	52.12'	52.11'	N34°18'26"W
85	C15	90°00'00"	20.00'	20.00'	31.42'	28.28'	S08°50'16"W
84	C16	4°42'09"	325.00'	13.34'	26.67'	26.67'	N51°29'11"E
84	C17	95°40'33"	20.00'	22.09'	33.40'	29.65'	N83°01'36"W
84	C18	2°12'38"	475.00'	9.16'	18.33'	18.33'	N34°05'00"W
84	C19	2°55'24"	1170.00'	29.85'	59.69'	59.69'	N31°31'00"W
78	C20	4°42'09"	275.00'	11.29'	22.57'	22.56'	N51°29'11"E
78	C21	95°40'33"	20.00'	22.09'	33.40'	29.65'	N01°17'50"E
78	C22	0°55'29"	475.00'	3.83'	7.67'	7.67'	N47°00'10"W
80	C23	2°32'34"	525.00'	11.65'	23.30'	23.30'	N45°11'38"W
81	C24	5°44'02"	525.00'	26.29'	52.54'	52.52'	N42°03'20"W
82	C25	5°43'32"	525.00'	26.25'	52.46'	52.44'	N35°19'33"W
83	C26	0°29'06"	525.00'	2.22'	4.44'	4.44'	N33°13'13"W
83	C27	2°18'00"	1220.00'	24.49'	48.97'	48.97'	N31°49'42"W



H:\Dwg 10\106910\Final Plat\10690-Plot 2-1.dwg 6/1/2011 11:52:22 PM EDT

BAUER, DAVIDSON & MERCHANT, INC.
Consulting Engineers
255 Green Meadows Drive S.
Lewis Center, Ohio 43085
(614) 946-3393