

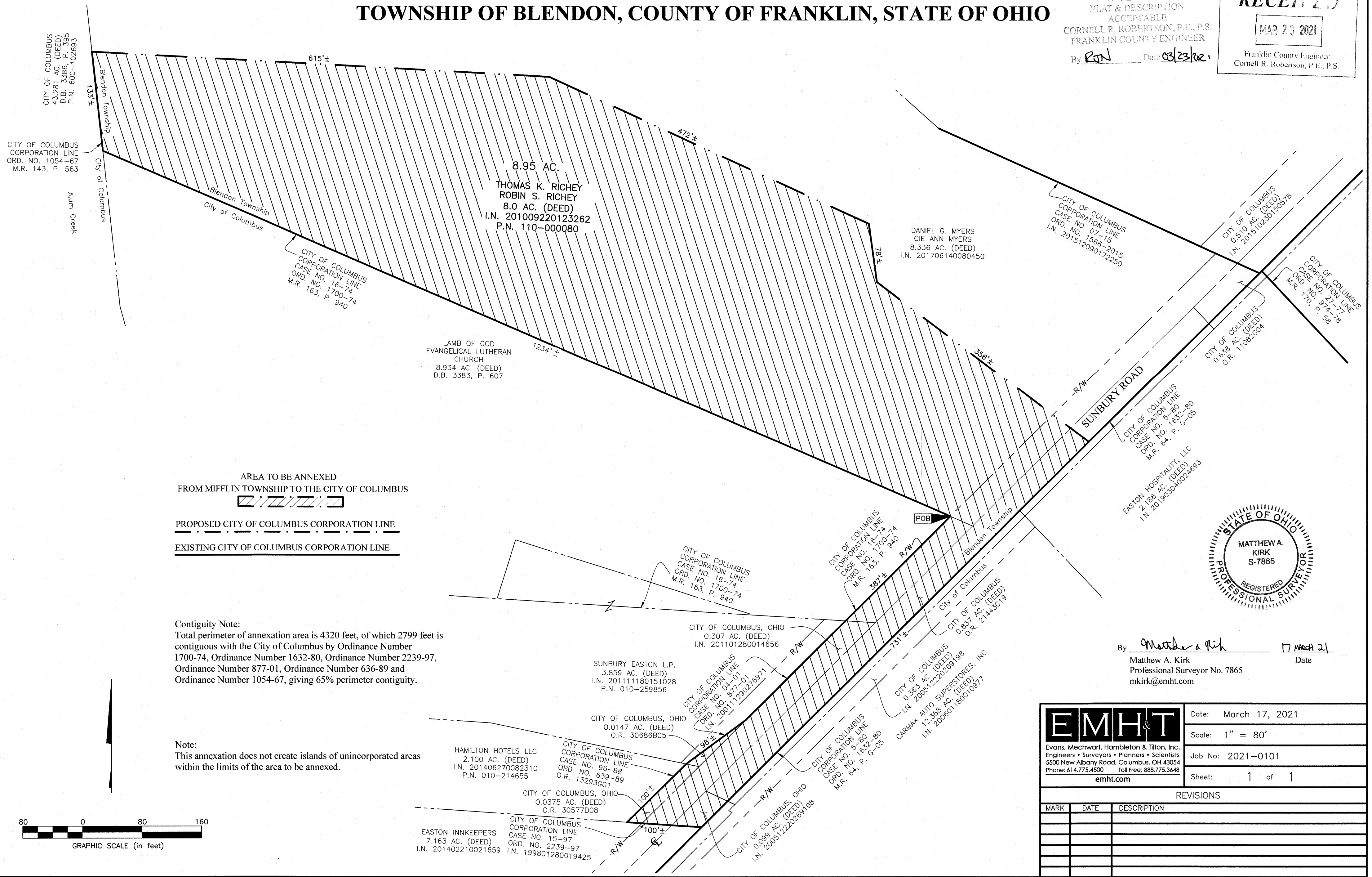
PROPOSED ANNEXATION OF 8.95± ACRES FROM BLENDON TOWNSHIP TO THE CITY OF COLUMBUS

QUARTER TOWNSHIP 3, TOWNSHIP 2, RANGE 17
UNITED STATES MILITARY DISTRICT
TOWNSHIP OF BLENDON, COUNTY OF FRANKLIN, STATE OF OHIO

ANNEXATION
PLAT & DESCRIPTION
ACCEPTABLE
CORNELL R. ROBERTSON, P.E., P.S.
FRANKLIN COUNTY ENGINEER

By RGN Date 03/23/21

RECEIVED
MAR 23 2021
Franklin County Engineer
Cornell R. Robertson, P.E., P.S.



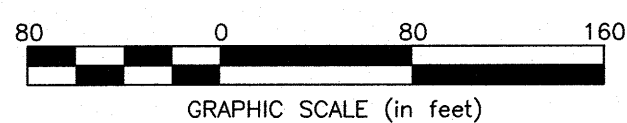
AREA TO BE ANNEXED
FROM MIFFLIN TOWNSHIP TO THE CITY OF COLUMBUS

PROPOSED CITY OF COLUMBUS CORPORATION LINE

EXISTING CITY OF COLUMBUS CORPORATION LINE

Contiguity Note:
Total perimeter of annexation area is 4320 feet, of which 2799 feet is contiguous with the City of Columbus by Ordinance Number 1700-74, Ordinance Number 1632-80, Ordinance Number 2239-97, Ordinance Number 877-01, Ordinance Number 636-89 and Ordinance Number 1054-67, giving 65% perimeter contiguity.

Note:
This annexation does not create islands of unincorporated areas within the limits of the area to be annexed.



STATE OF OHIO
MATTHEW A. KIRK
S-7865
REGISTERED
PROFESSIONAL SURVEYOR

By Matthew A. Kirk Date 17 March 21
Matthew A. Kirk
Professional Surveyor No. 7865
mkirk@emht.com

EMHT		Date: March 17, 2021
Evans, Mechwart, Hambleton & Tilton, Inc. Engineers • Surveyors • Planners • Scientists 5500 New Albany Road, Columbus, OH 43054 Phone: 614.775.4500 Toll Free: 888.775.3648		Scale: 1" = 80'
emht.com		Job No: 2021-0101
		Sheet: 1 of 1
REVISIONS		
MARK	DATE	DESCRIPTION