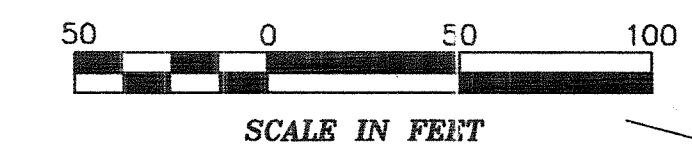
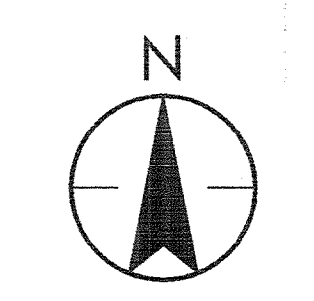


BELPER COMPANY
27.81 ACRES
INST. 199301050047766

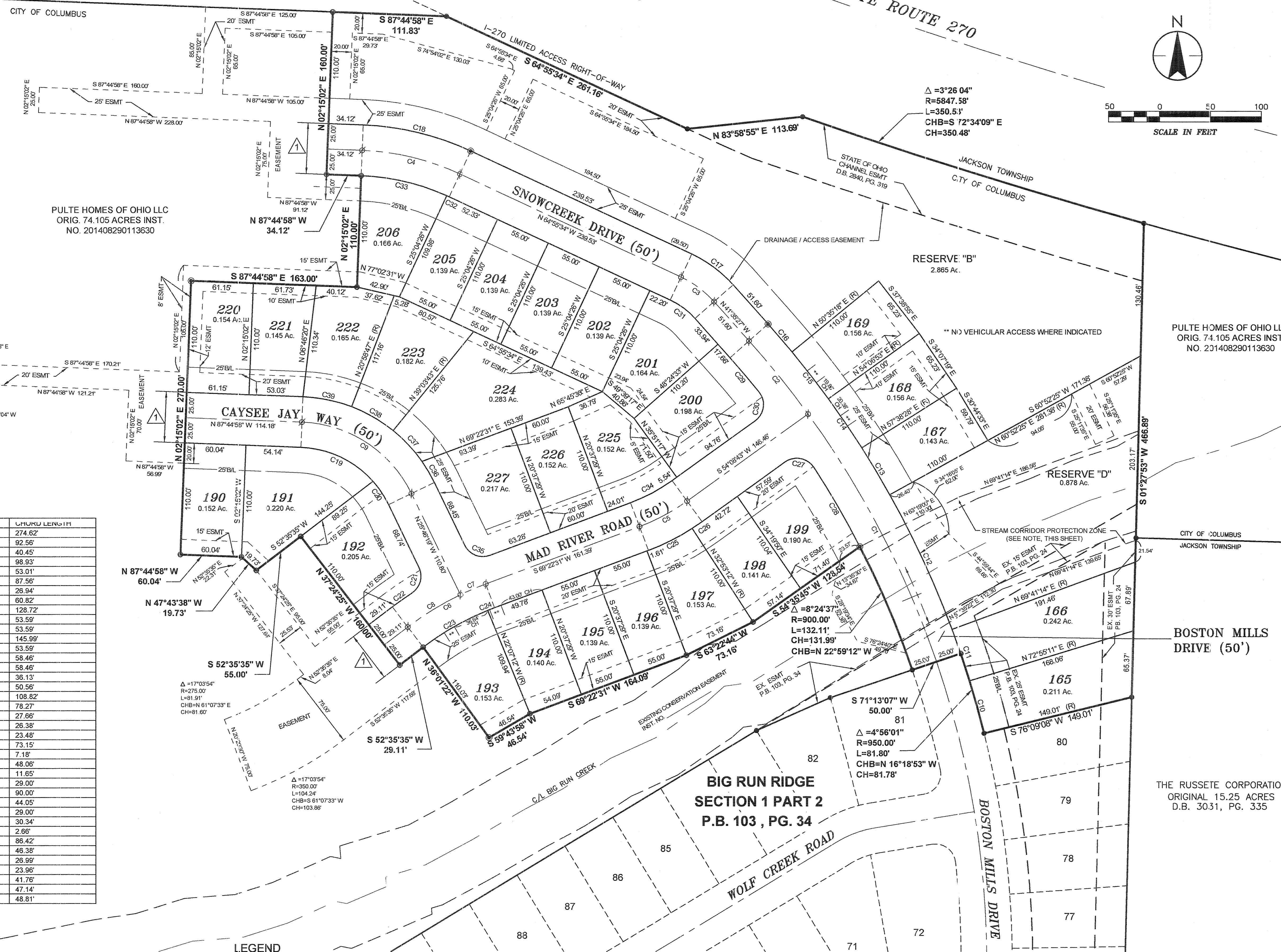
CROSSMANN COMMUNITIES OF OHIO, INC.
PARCEL III - 1.001 AC.
INST. NO. 200107030151075

STATE OF OHIO
6.65 ACRES
30-WL
D.B. 2909, PG. 25

INTERSTATE ROUTE 270



26
25
24
9
UNROE AVENUE
ROBIN ESTATES
P.B. 50, PG. 53
10
ROBIN ESTATES
NO. 2
P.B. 52, PG. 98
29



CURVE	DELTA ANGLE	RADIUS	ARC LENGTH	CHORD BEARING	CHORD LENGTH
C1	17°04'24"	925.00'	275.64'	N 27°19'05" W	274.62'
C2	5°44'09"	925.00'	92.60'	N 38°43'22" W	92.56'
C3	23°20'07"	100.00'	40.73'	N 53°15'30" W	40.45'
C4	22°49'24"	250.00'	99.59'	N 76°20'16" W	98.93'
C5	15°13'49"	200.00'	53.16'	S 61°45'37" W	53.01'
C6	16°46'56"	300.00'	87.87'	S 60°59'03" W	87.56'
C7	5°08'51"	300.00'	26.95'	S 68°48'06" W	26.94'
C8	11°38'05"	300.00'	60.92'	S 58°24'38" W	60.82'
C9	61°58'39"	125.00'	135.21'	N 56°45'39" W	128.72'
C10	3°13'57"	950.00'	53.60'	N 15°27'51" W	53.59'
C11	3°13'57"	950.00'	53.60'	N 18°41'48" W	53.59'
C12	8°48'49"	950.00'	146.13'	N 24°43'10" W	145.99'
C13	3°13'57"	950.00'	53.60'	N 30°44'33" W	53.59'
C14	3°31'35"	950.00'	58.47'	N 34°07'19" W	58.46'
C15	3°31'35"	950.00'	58.47'	N 37°38'55" W	58.46'
C16	2°10'44"	950.00'	36.13'	N 40°30'04" W	36.13'
C17	23°20'07"	125.00'	50.91'	N 53°15'30" W	50.56'
C18	22°49'24"	275.00'	109.54'	N 76°20'16" W	108.82'
C19	46°04'43"	100.00'	80.42'	S 64°42'37" E	78.27'
C20	15°53'56"	100.00'	27.75'	S 33°43'17" E	27.66'
C21	82°30'19"	20.00'	28.80'	S 15°28'50" W	26.38'
C22	4°08'24"	325.00'	23.48'	S 54°39'48" W	23.48'
C23	15°17'13"	275.00'	73.37'	N 60°14'12" E	73.15'
C24	1°29'43"	275.00'	7.18'	N 68°37'40" E	7.18'
C25	12°15'43"	225.00'	48.15'	N 63°14'40" E	48.06'
C26	2°58'05"	225.00'	11.68'	N 55°37'45" E	11.65'
C27	92°55'52"	20.00'	32.44'	S 79°23'21" E	29.00'
C28	5°43'55"	900.00'	90.04'	S 30°03'28" E	90.00'
C29	2°48'17"	900.00'	44.06'	S 40°11'18" E	44.05'
C30	92°55'52"	20.00'	32.44'	S 07°40'47" W	29.00'
C31	23°20'07"	75.00'	30.55'	S 53°15'30" E	30.34'
C32	0°40'42"	225.00'	2.66'	S 65°15'55" E	2.66'
C33	22°08'42"	225.00'	86.96'	S 76°40'38" E	86.42'
C34	15°13'49"	175.00'	46.52'	S 61°45'37" W	46.38'
C35	84°51'09"	20.00'	29.62'	N 68°11'54" W	26.99'
C36	9°09'46"	150.00'	23.99'	N 30°21'12" W	23.96'
C37	18°00'12"	150.00'	41.90'	N 42°56'11" W	41.76'
C38	18°04'56"	150.00'	47.34'	N 59°58'45" W	47.14'
C39	18°43'45"	150.00'	49.03'	N 78°23'06" W	48.81'

- LEGEND**
- STREET NAME CHANGE
 - PERMANENT MARKER SET (SOLID ONE INCH IRON PIN)
 - IRON PIPE SET ARE 3/4 INCH IRON PIPES, 30 INCHES IN LENGTH, WITH A YELLOW CAP BEARING THE NAME "STANTEC".
 - MAG NAIL SET
 - 3/4 INCH IRON PIPE FOUND
 - △ NO VEHICULAR ACCESS TO BE IN EFFECT UNTIL SAID STREET IS EXTENDED BY PLAT OR DEED.

* SECTION 4123.43 OF THE COLUMBUS CITY CODE PROHIBITS DRIVEWAYS DEPRESSED BELOW THE SIDEWALK ELEVATION AT ANY DRIVEWAY WITHIN 20 VERTICAL INCHES OF THE LOW POINT IN ANY STREET. IF CONSTRUCTION OF A DEPRESSED DRIVEWAY IS PLANNED, THE BUILDER SHOULD VERIFY THAT THE DRIVEWAY IS NOT AFFECTED BY THIS REGULATION. AT THE TIME THIS PLAT WAS RECORDED, THE FOLLOWING LOTS ARE PROHIBITED FROM HAVING DEPRESSED DRIVES: LOTS 165-169, 190-202, 220-221, AND 225-227.

STREAM CORRIDOR PROTECTION ZONE: THE STREAM CORRIDOR PROTECTION ZONE (SCPZ) DELINEATED HEREON IS FOR THE EROSION PROTECTION, FLOOD STORAGE AND WATER QUALITY PRESERVATION OF BIG RUN CREEK. THE FOLLOWING FACILITIES/ACTIVITIES ARE PROHIBITED WITHIN THE SCPZ LIMITS, UNLESS APPROVED BY THE CITY: BUILDINGS/STRUCTURES, SWIMMING POOLS, SIGNS, FENCES, PRIVATE UTILITY LINES, FILLING/EXCAVATING, REMOVAL OF TOPSOIL OR OTHER NATURALLY OCCURRING MATERIALS, HERBICIDES/PESTICIDES, AND THE REMOVAL OF NATIVE TREES/VEGETATION.

THE SCPZ AS DESIGNATED AND DELINEATED HEREON SHALL BE OWNED AND MAINTAINED BY THE CITY OF COLUMBUS DIVISION OF RECREATION AND PARKS.

**BIG RUN RIDGE
SECTION 3 PART 1
SHEET 2 OF 2**

1500 LAKE SHORE DRIVE
SUITE 100
COLUMBUS, OHIO 43204
(614) 486-4393 1-800-340-2743
FAX (614) 486-4387



Copyright Reserved
The Contractor shall verify and be responsible for all dimensions. DO NOT scale the drawing - any errors or omissions shall be reported to Stantec, without delay.
The Copyrights to all designs and drawings are the property of Stantec. Reproduction or use for any purposes other than that authorized by Stantec is forbidden.