



HORIZONTAL SCALE IN FEET
0 25 50

PID NO. 115631

R/W DESIGNER
R/W REVIEWER
CSS

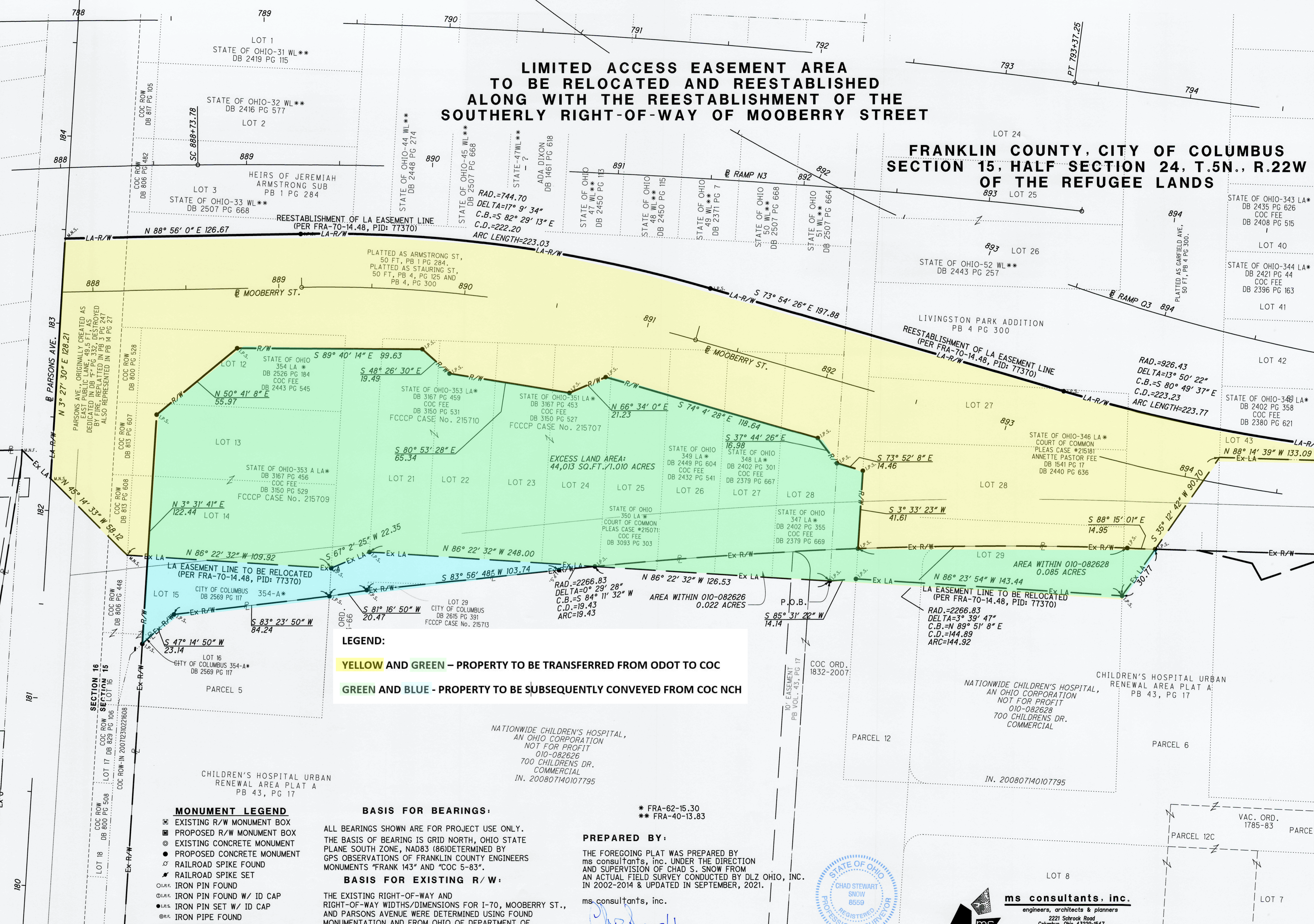
LA EASEMENT REESTABLISHMENT

MATCHLINE SEE SHEET 2

1/2

**LIMITED ACCESS EASEMENT AREA
TO BE RELOCATED AND REESTABLISHED
ALONG WITH THE REESTABLISHMENT OF THE
SOUTHERLY RIGHT-OF-WAY OF MOOBERRY STREET**

**FRANKLIN COUNTY, CITY OF COLUMBUS
SECTION 15, HALF SECTION 24, T.5N., R.22W
OF THE REFUGEE LANDS**



LEGEND:
YELLOW AND GREEN - PROPERTY TO BE TRANSFERRED FROM ODOT TO COC
GREEN AND BLUE - PROPERTY TO BE SUBSEQUENTLY CONVEYED FROM COC NCH

BASIS FOR BEARINGS:
 ALL BEARINGS SHOWN ARE FOR PROJECT USE ONLY. THE BASIS OF BEARING IS GRID NORTH, OHIO STATE PLANE SOUTH ZONE, NAD83 (86) DETERMINED BY GPS OBSERVATIONS OF FRANKLIN COUNTY ENGINEERS MONUMENTS "FRANK 143" AND "COC 5-83".

BASIS FOR EXISTING R/W:
 THE EXISTING RIGHT-OF-WAY AND RIGHT-OF-WAY WIDTHS/DIMENSIONS FOR I-70, MOOBERRY ST., AND PARSONS AVENUE WERE DETERMINED USING FOUND MONUMENTATION AND FROM OHIO DEPARTMENT OF TRANSPORTATION R/W PLANS FRA-70-14.48, FRA-62-15.30, FRA-40-14.34, FRA-40-13.83 & SURVEYS OF RECORD, SUBDIVISION PLATS AND CURRENT DEEDS.

* FRA-62-15.30
 ** FRA-40-13.83

PREPARED BY:
 THE FOREGOING PLAT WAS PREPARED BY ms consultants, inc. UNDER THE DIRECTION AND SUPERVISION OF CHAD S. SNOW FROM AN ACTUAL FIELD SURVEY CONDUCTED BY DLZ OHIO, INC. IN 2002-2014 & UPDATED IN SEPTEMBER, 2021.

ms consultants, inc.

CHAD S. SNOW
 REGISTERED PROFESSIONAL SURVEYOR No. 8559



ms consultants, inc.
 engineers, architects & planners
 2221 Schrock Road
 Columbus, Ohio 43228-1547
 Tel 614.898.7100 Fax 614.898.7570
 www.msconsultants.com

MONUMENT LEGEND

- EXISTING R/W MONUMENT BOX
- PROPOSED R/W MONUMENT BOX
- EXISTING CONCRETE MONUMENT
- PROPOSED CONCRETE MONUMENT
- RAILROAD SPIKE FOUND
- RAILROAD SPIKE SET
- IRON PIN FOUND
- IRON PIN FOUND W/ ID CAP
- IRON PIN SET W/ ID CAP
- IRON PIPE FOUND
- IRON PIPE SET
- SURVEY MAG SPIKE FOUND
- SURVEY MAG SPIKE SET

LIMITED ACCESS EASEMENT AREA TO BE RELOCATED AND REESTABLISHED ALONG WITH THE REESTABLISHMENT OF THE SOUTHERLY RIGHT-OF-WAY OF MOOBERRY STREET



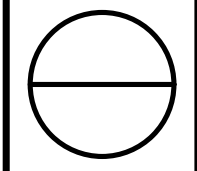
HORIZONTAL
SCALE IN FEET

PID NO.
115631

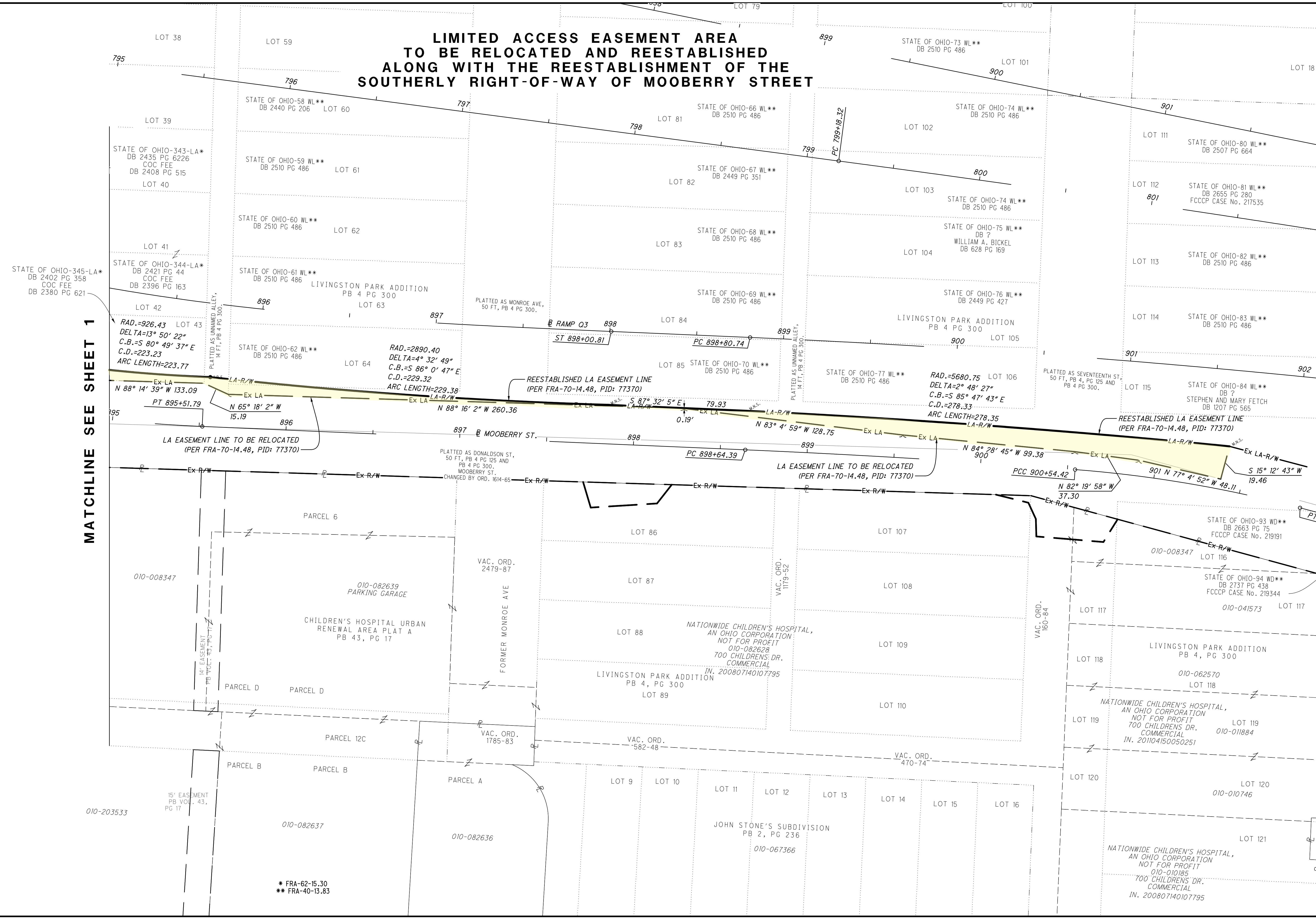
R/W DESIGNER
R/W REVIEWER
CSS

LA EASEMENT REESTABLISHMENT

2 / 2



MATCHLINE SEE SHEET 1



* FRA-62-15.30
** FRA-40-13.83