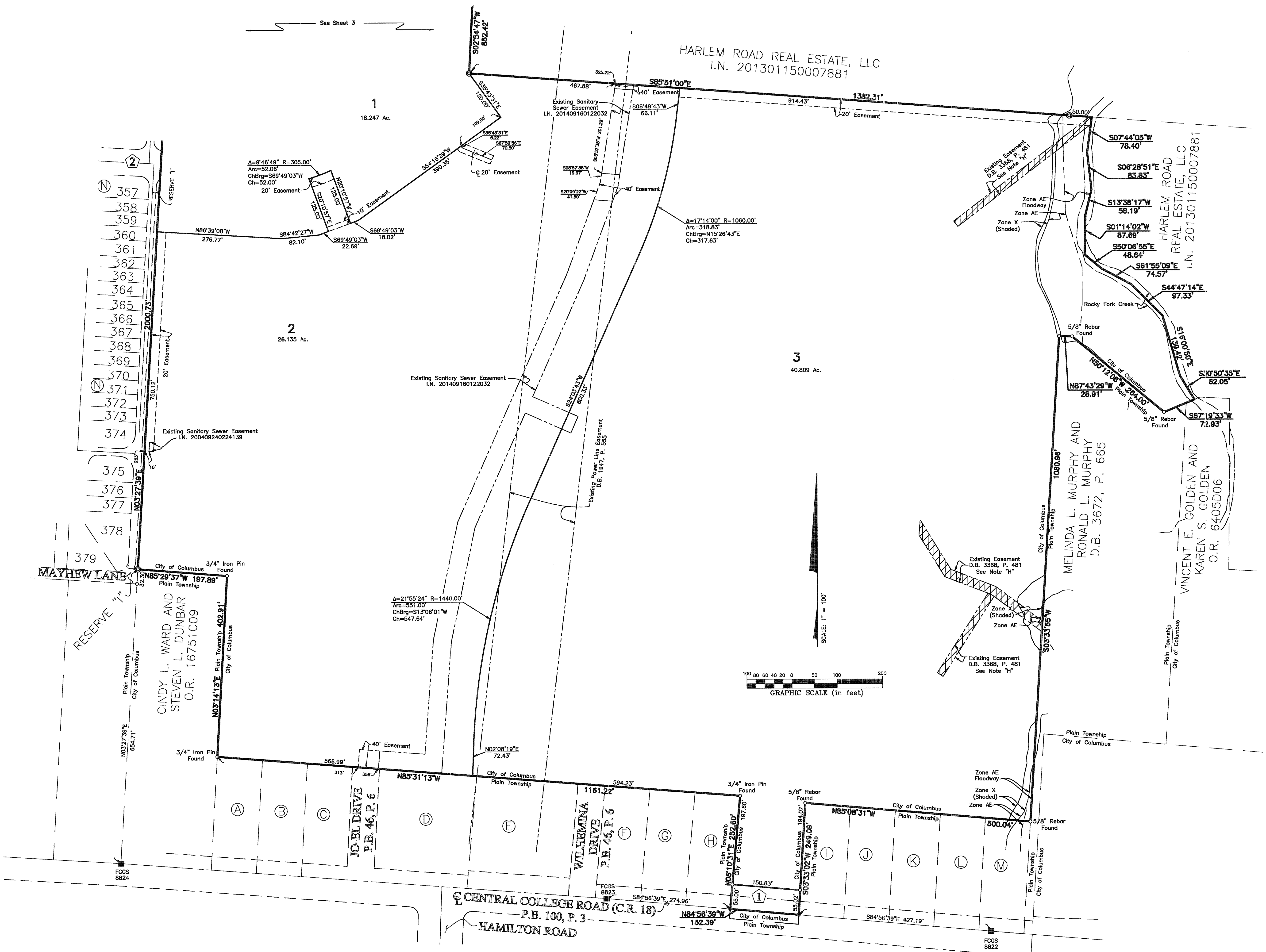


RESUBDIVISION OF A PART OF JO-EL ACRES



- H Easement to be Released
 D.B. 3367, P. 481
 See Note "H"
- A RAYMOND D. MCFARLAND AND
 VERA R. MCFARLAND, TRUSTEES
 I.N. 200307300238091
- B VIRGINIA F. FREET
 I.N. 201406200078030
- C ELSIE A. KIRKPATRICK
 O.R. 4234E06
- D 5290 CENTRAL COLLEGE LLC
 I.N. 200402250040321
- E JAMES H. HORNE AND
 ANNA C. HORNE
 D.B. 3685, P. 121
- F NANCY L. CREANEY AND
 MARY M. ARNDT
 I.N. 200611290237947
- G SELECT MANAGEMENT &
 INVESTMENTS, LLC
 I.N. 201302220030981
- H JASON B. STUDER AND
 TAYLOR STUDER
 I.N. 201404230049591
- I JONATHAN OLIVER AND
 RENE NICOLE OLIVER
 I.N. 201411130151812
- J RICHARD T. WOOD AND
 KATHRYN R. WOOD
 I.N. 201509040125323
- K DEBORAH L. SARTORI
 O.R. 21886E20
- L DONALD L. BOYD AND
 COLLEEN T. BOYD
 I.N. 200007270148895
- M SANDRA W. CLARY AND
 WILLIAM MILES CLARY
 I.N. 200309100288819
- N RESUBDIVISION OF PART OF
 UPPER ALBANY WEST
 SECTION 1
 P.B. 107, P. 21
- 1 CENTRAL COLLEGE
 ROAD
- 2 UPPER ALBANY
 CROSSING DRIVE

15/20151543/JOEL ACRES/RESUBDIVISION OF A PART OF JO-EL ACRES.dwg plotted by KIRK, MATTHEW on 1/20/2016 11:56:18 AM
 Xref: