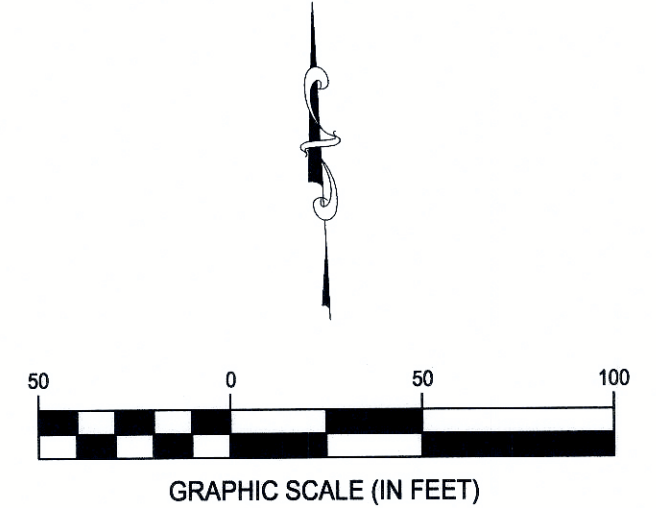



PARKSIDE SECTION 2
STATE OF OHIO, COUNTY OF FRANKLIN, CITY OF COLUMBUS,
QUARTER TOWNSHIP 1, TOWNSHIP 2, RANGE 17, UNITED STATES MILITARY LANDS

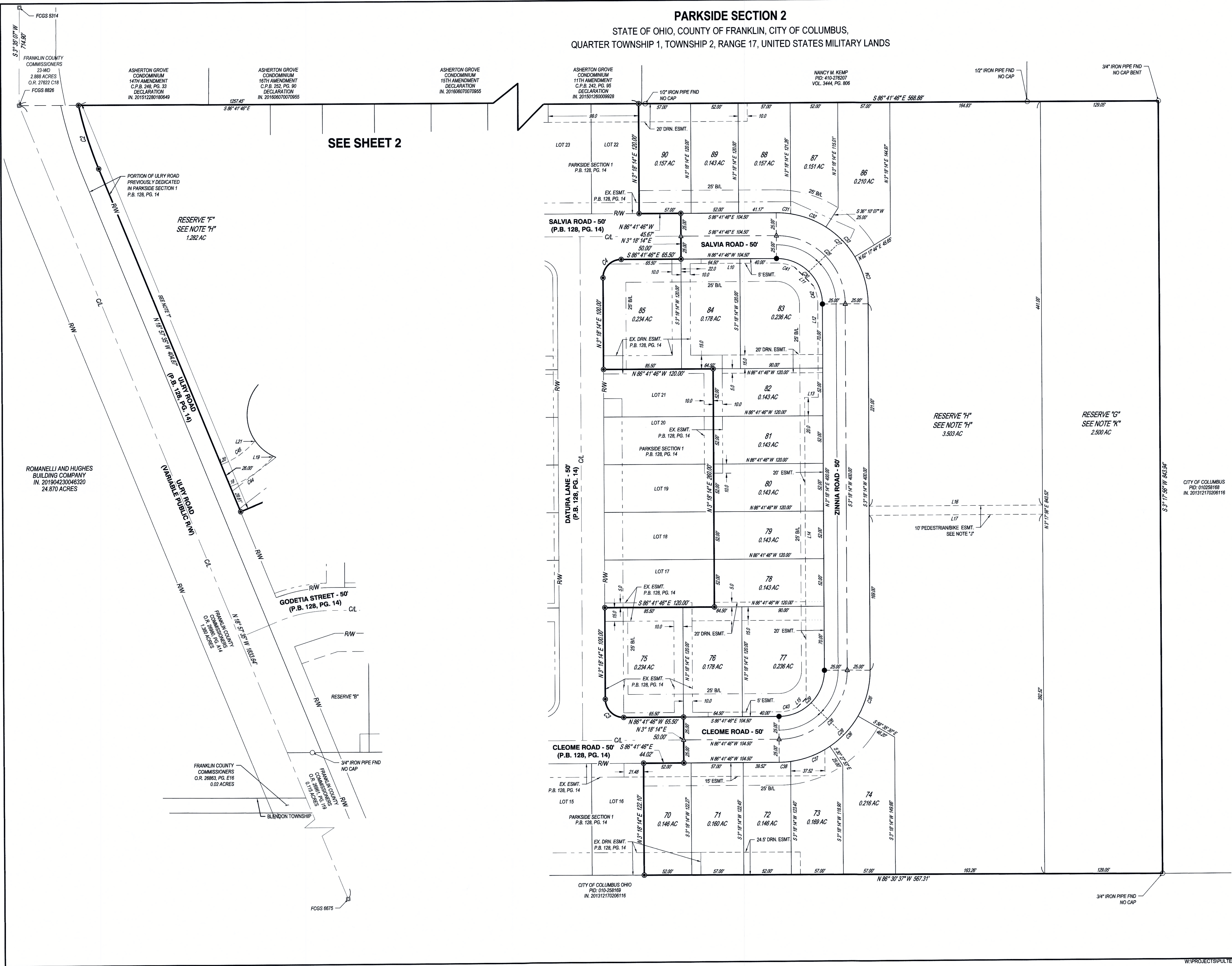


Line #	Direction	Length
L10	N86° 41' 46"W	82.50'
L11	N41° 41' 46"W	29.15'
L12	N03° 18' 14"E	102.00'
L13	N86° 41' 46"W	15.00'
L14	S03° 18' 14"W	331.54'
L15	N48° 18' 14"E	14.43'
L16	S86° 41' 46"E	189.70'
L17	S86° 41' 46"E	189.70'
L18	N71° 00' 35"E	4.32'
L19	N44° 47' 46"E	2.14'
L20	N71° 00' 35"E	4.31'
L21	N44° 47' 46"E	1.77'

Curve	Radius	Arc Length	Chord	Delta Angle
C2	433.69'	72.93'	N14° 08' 29"W, 72.85'	9° 38' 07"
C3	20.00'	31.42'	N41° 41' 46"W, 28.28'	90° 00' 00"
C4	20.00'	31.42'	N48° 18' 14"E, 28.28'	90° 00' 00"
C25	75.00'	117.81'	S41° 41' 46"E, 106.07'	90° 00' 00"
C26	75.00'	117.81'	S48° 18' 14"W, 106.07'	90° 00' 00"
C27	100.00'	157.08'	S41° 41' 46"E, 141.42'	90° 00' 00"
C28	100.00'	157.08'	S48° 18' 14"W, 141.42'	90° 00' 00"
C29	50.00'	78.54'	N48° 18' 14"E, 70.71'	90° 00' 00"
C30	50.00'	78.54'	N41° 41' 46"W, 70.71'	90° 00' 00"
C31	100.00'	15.90'	S82° 08' 29"E, 15.88'	9° 06' 35"
C32	100.00'	41.46'	S65° 42' 32"E, 41.16'	23° 45' 19"
C33	100.00'	45.60'	S40° 46' 04"E, 45.21'	26° 07' 37"
C34	100.00'	54.12'	S12° 12' 01"E, 53.46'	31° 00' 29"
C35	100.00'	52.54'	S18° 21' 22"W, 51.94'	30° 06' 17"
C36	100.00'	45.60'	S46° 28' 19"W, 45.21'	26° 07' 37"
C37	100.00'	46.42'	S72° 50' 06"W, 46.01'	26° 35' 58"
C38	100.00'	12.51'	S89° 43' 09"W, 12.50'	7° 10' 09"
C41	45.00'	20.50'	N73° 38' 45"W, 20.32'	26° 06' 02"
C42	45.00'	20.50'	N8° 44' 47"W, 20.32'	26° 06' 02"
C43	45.00'	20.50'	N80° 15' 13"E, 20.32'	26° 06' 02"
C44	113.00'	51.70'	N57° 54' 11"E, 51.25'	26° 12' 49"
C45	87.00'	39.80'	N57° 54' 11"E, 39.46'	26° 12' 49"

- CESO IRON PIN LEGEND**
- IRON PIPE FOUND
 - IRON PIN TO BE SET (5/8"x30" REBAR W/ CESO CAP)
 - ▲ MAG NAIL SET
 - PERMANENT MARKER SET (1"x30" REBAR W/ ALUMINUM CESO CAP)
 - *DRN. ESMT.* DRAINAGE EASEMENT
 - *ESMT.* EASEMENT

PLAT	
PARKSIDE SECTION 2	
CITY OF COLUMBUS	FRANKLIN COUNTY, OHIO
SCALE: 1"=50'	DATE: 5/20/2020
DESIGN: N/A	JOB NO.: 756117
DRAWN: ALB	SHEET NO.: 3 OF 4
CHECKED: JAM	 WWW.CESOINC.COM



SEE SHEET 2

RESERVE "F"
SEE NOTE "H"
1.282 AC

RESERVE "H"
SEE NOTE "H"
3.503 AC

RESERVE "G"
SEE NOTE "K"
2.500 AC

ROMANELLI AND HUGHES
BUILDING COMPANY
IN. 201904230046320
24.870 ACRES

FRANKLIN COUNTY
COMMISSIONERS
O.R. 26683, PG. E16
0.02 ACRES

CITY OF COLUMBUS OHIO
PID: 010-258169
IN. 201312170206116