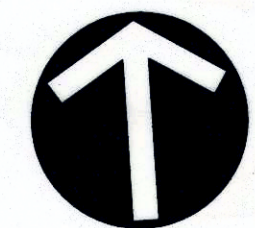


# PRESTON HOLLOW SECTION 1

STATE OF OHIO, COUNTY OF FRANKLIN, CITY OF COLUMBUS, LOT 7, QUARTER TWP. 2, TWP. 2, RANGE 16  
UNITED STATES MILITARY LANDS

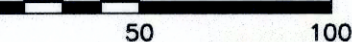
JORGENSEN FARMS, LLC.  
35.238 ACRES  
IN. 201602290023926

KENNETH R. GEORGE, TR.  
AND JUDY A. WOLF, TR.  
IN. 200202060034876  
IN. 200508090161209

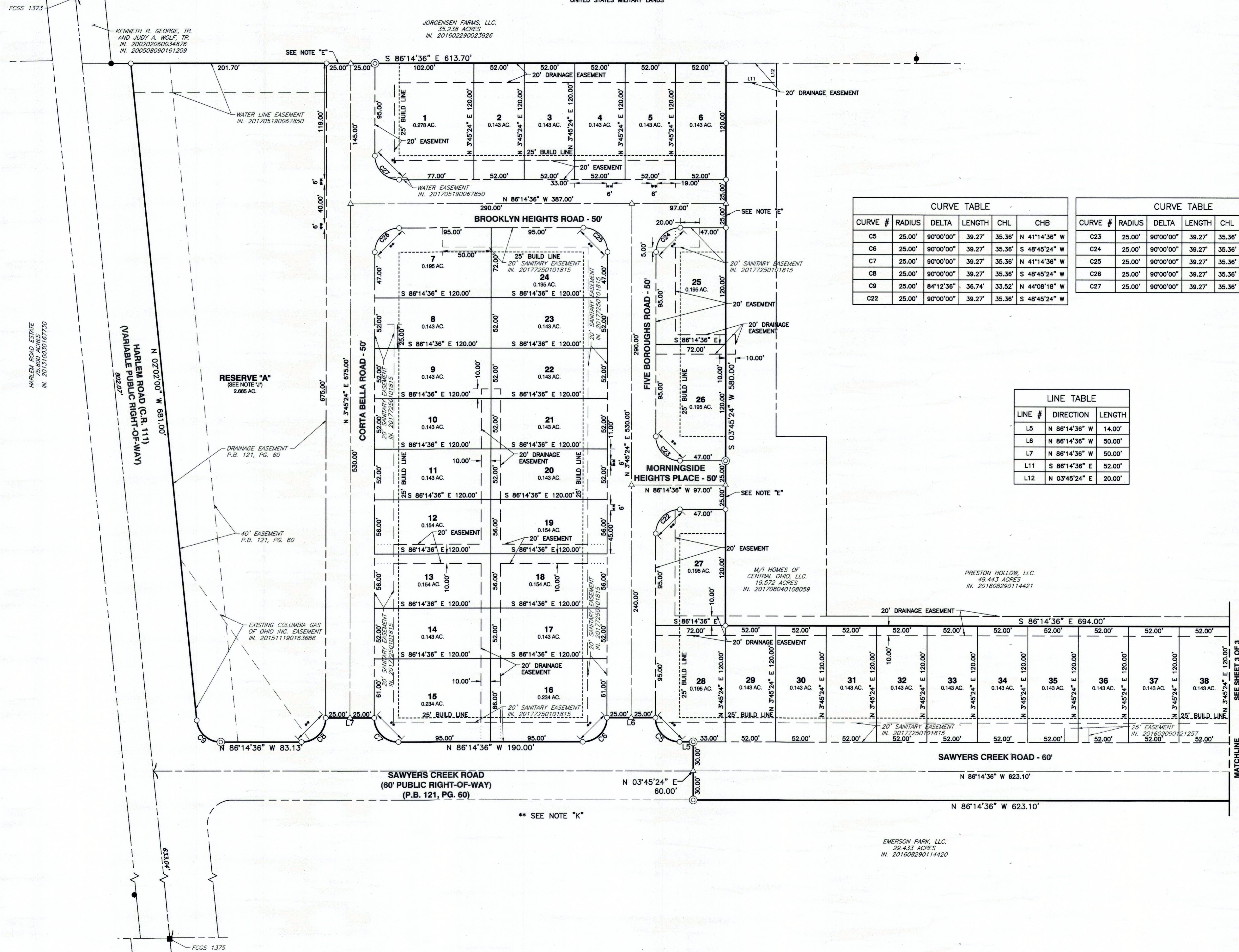


NORTH

SCALE IN FEET



A (2015) 151-071 - Survey (own) 151017-301 - SUB - HMT (own) 151022/2017 - (p.m.m) - LP: 8/24/2017 3:36 PM



CURVE TABLE					
CURVE #	RADIUS	DELTA	LENGTH	CHL	CHB
C5	25.00'	90°00'00"	39.27'	35.36'	N 41°14'36" W
C6	25.00'	90°00'00"	39.27'	35.36'	S 48°45'24" W
C7	25.00'	90°00'00"	39.27'	35.36'	N 41°14'36" W
C8	25.00'	90°00'00"	39.27'	35.36'	S 48°45'24" W
C9	25.00'	84°12'36"	36.74'	33.52'	N 44°08'18" W
C22	25.00'	90°00'00"	39.27'	35.36'	S 48°45'24" W

CURVE TABLE					
CURVE #	RADIUS	DELTA	LENGTH	CHL	CHB
C23	25.00'	90°00'00"	39.27'	35.36'	S 41°14'36" E
C24	25.00'	90°00'00"	39.27'	35.36'	S 48°45'24" W
C25	25.00'	90°00'00"	39.27'	35.36'	N 41°14'36" W
C26	25.00'	90°00'00"	39.27'	35.36'	S 48°45'24" W
C27	25.00'	90°00'00"	39.27'	35.36'	S 41°14'36" E

LINE TABLE		
LINE #	DIRECTION	LENGTH
L5	N 86°14'36" W	14.00'
L6	N 86°14'36" W	50.00'
L7	N 86°14'36" W	50.00'
L11	S 86°14'36" E	52.00'
L12	N 03°45'24" E	20.00'

- LEGEND**
- ▲ MAG NAIL FOUND
  - IRON PIN FOUND
  - △ MAG NAIL SET
  - IRON PIN SET (SEE SURVEY DATA)
  - ◎ PERMANENT MARKER (SEE SURVEY DATA)

REVISION RECORD	
NO.	DESCRIPTION

**Civil & Environmental Consultants, Inc.**  
250 Old Wilson Bridge Road - Suite 250 - Worthington, OH 43085

**CITY OF COLUMBUS**  
**FRANKLIN COUNTY, OHIO**

**PRESTON HOLLOW SECTION 1**  
DATE: AUGUST 2017 DRAWN BY: JEC  
DWG SCALE: 1"=50' CHECKED BY: MUA

DRAWING NO.: **PLAT**