

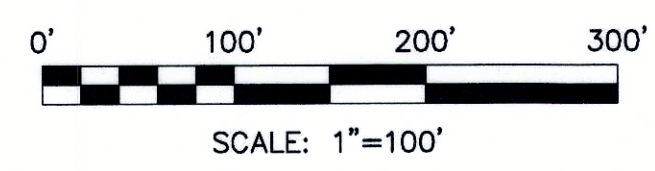
REFERENCE DATA USED

FRANKLIN COUNTY GIS/TAX MAPS
DEEDS AS REFERENCED HEREON
SURVEYS:
ODOT PROJECT FASP No. AW FAS 116-A(1)
S.H. 924 SEC. F (Pt)
ODOT LOCATION PLAN
FRANKLIN CO. S.R. 665, SEC. 14.68, 16.27
ODOT LOCATION PLAN
FRA-317, SEC. 16.71

ACREAGE BREAKDOWN

LOT 1	11.949 ACRES
LOT 2	7.668 ACRES
LOT 3	8.290 ACRES
LOT 4	7.576 ACRES
LOT 5	6.677 ACRES
LOT 6	9.850 ACRES
LOT 7	49.348 ACRES
COLLINGS DR.	3.682 ACRES
LONDON-GROVEPORT RD.	0.813 ACRES
TOTAL AREA	105.853 ACRES

NOTE: GROVEPORT LOGISTICS HUB IS OUT OF FRANKLIN COUNTY PARCEL NO. 495-232636-00



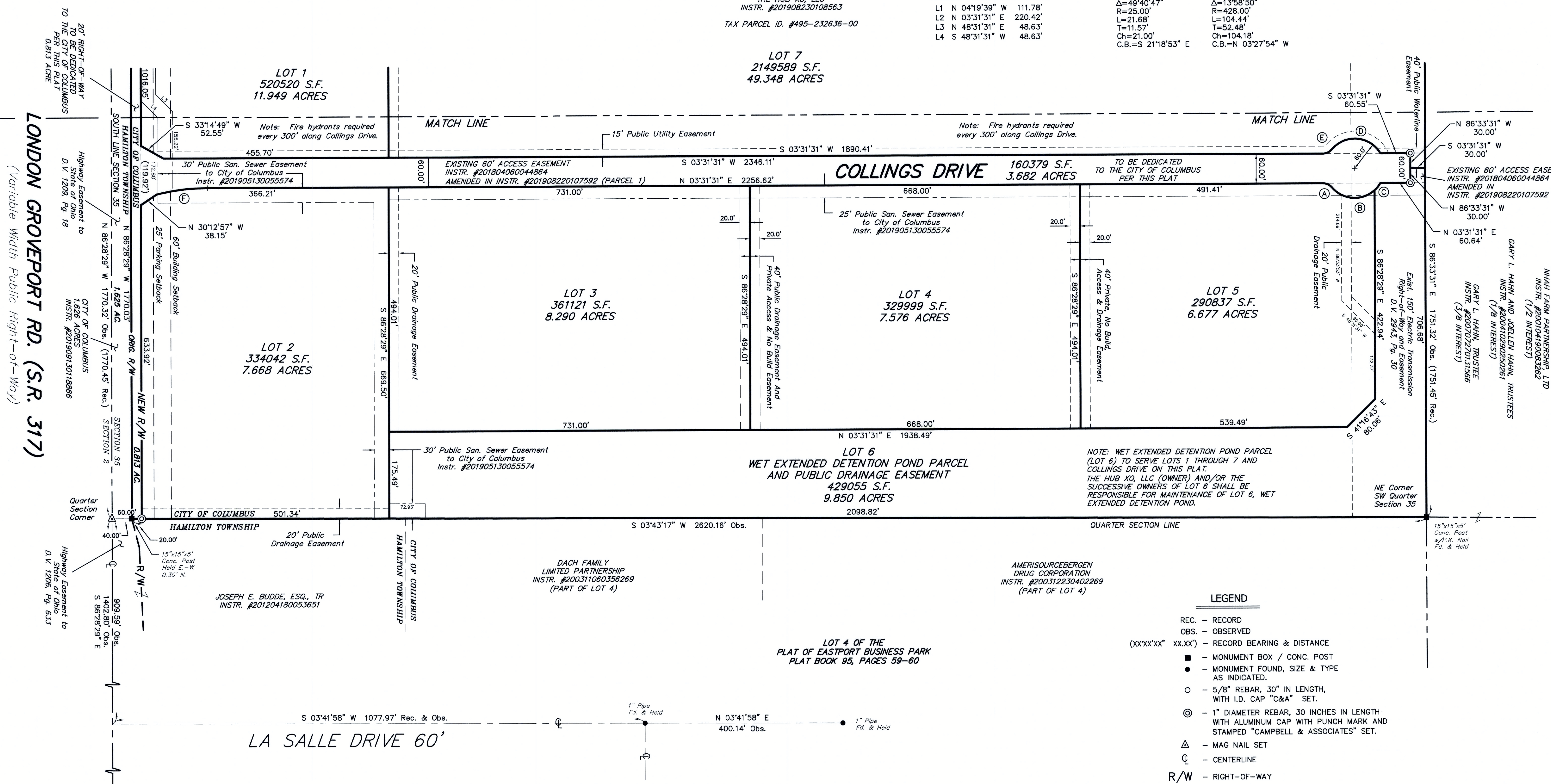
SEE SHEET 2 OF 3

THE HUB XO, LLC
INSTR. #201908230108563
TAX PARCEL ID. #495-232636-00

EASEMENT DIMENSION TABLE

L1	N 04°19'39" W	111.78'
L2	N 03°31'31" E	220.42'
L3	N 48°31'31" E	48.63'
L4	S 48°31'31" W	48.63'

(A)	Δ=49°40'47" R=25.00' L=21.68' T=11.57' Ch=21.00' C.B.=N 28°21'55" E	(B)	Δ=91°35'12" R=60.00' L=95.91' T=61.68' Ch=86.02' C.B.=S 07°24'42" W
(C)	Δ=18°05'35" R=60.00' L=18.95' T=9.55' Ch=18.87' C.B.=S 47°25'41" E	(D)	Δ=109°40'47" R=60.00' L=114.86' T=85.18' Ch=98.11' C.B.=N 08°41'07" E
(E)	Δ=49°40'47" R=25.00' L=21.68' T=11.57' Ch=21.00' C.B.=S 21°18'53" E	(F)	Δ=13°58'50" R=428.00' L=104.44' T=52.48' Ch=104.18' C.B.=N 03°27'54" W



LONDON GROVEPORT RD. (S.R. 317)
(Variable Width Public Right-of-Way)

LEGEND

- REC. - RECORD
- OBS. - OBSERVED
- (XXX'XX" XX.XX') - RECORD BEARING & DISTANCE
- - MONUMENT BOX / CONC. POST
- - MONUMENT FOUND, SIZE & TYPE AS INDICATED.
- - 5/8" REBAR, 30" IN LENGTH, WITH I.D. CAP "C&A" SET.
- ⊙ - 1" DIAMETER REBAR, 30 INCHES IN LENGTH WITH ALUMINUM CAP WITH PUNCH MARK AND STAMPED "CAMPBELL & ASSOCIATES" SET.
- △ - MAG NAIL SET
- ⊕ - CENTERLINE
- R/W - RIGHT-OF-WAY

Disc. Mon. "6-A" for "ZWAR" project Fd. on Section Line