

PROPOSED BOUNDARY ADJUSTMENT OF 13.224 AC. +/- FROM THE CITY OF DUBLIN TO THE CITY OF COLUMBUS

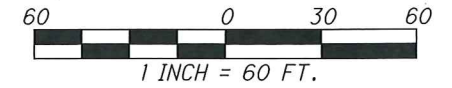
LEGEND:

- P.O.B. POINT OF BEGINNING
- EX. CORPORATION LINE
- PROP. CORPORATION LINE
- Ex R/W- EX. RIGHT OF WAY
- Ex SH- EX. STANDARD HIGHWAY ESMT.
- Ex U- EX. UTILITY EASEMENT
- EX. GENERAL EASEMENT
- COUNTY LINE
- AREA TO BE ANNEXED

ANNEXATION AREA #1
STATE OF OHIO
FRANKLIN COUNTY
CITY OF DUBLIN, CITY OF COLUMBUS,
PERRY TOWNSHIP

BASIS OF BEARINGS:

BEARINGS ARE BASED ON THE BEARING BETWEEN
FRANKLIN COUNTY ENGINEER'S MONUMENTS
FCGS7769 AND FCGS7772 BEING N 02°34'55" E.



RECEIVED

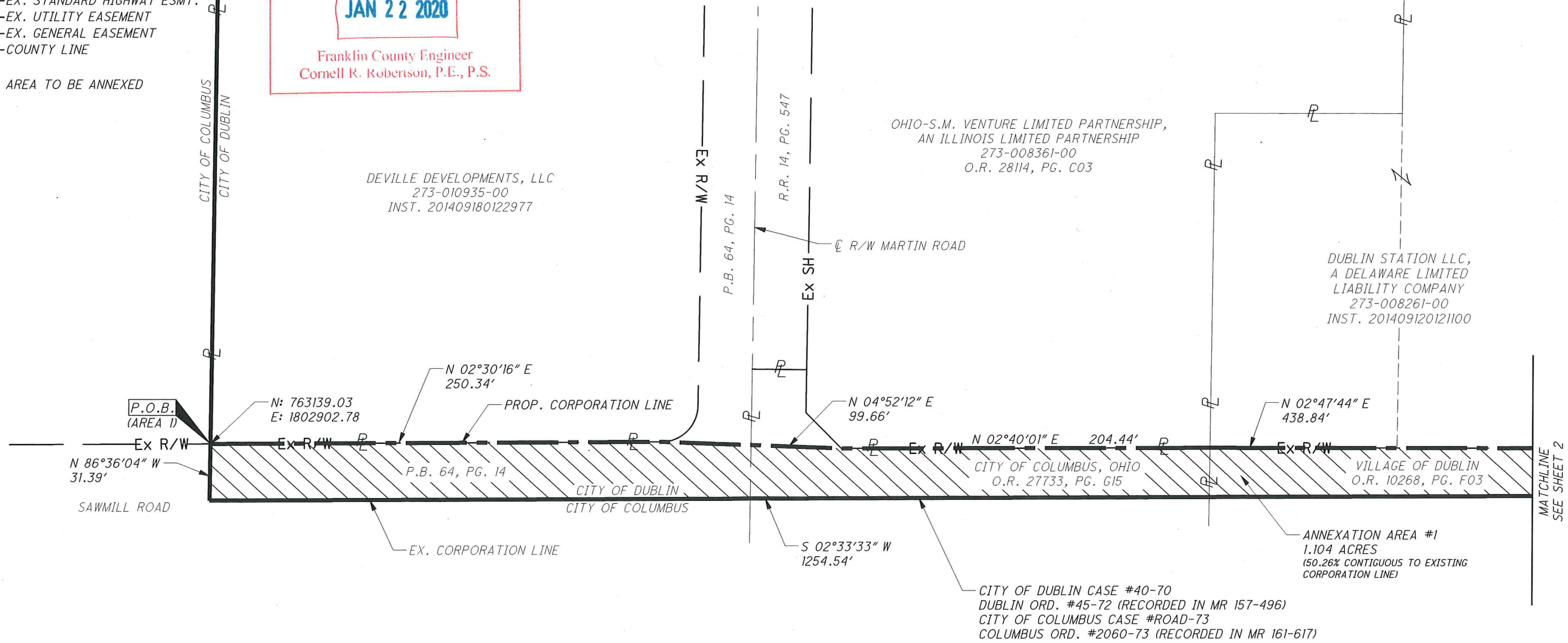
JAN 22 2020

Franklin County Engineer
Cornell R. Robertson, P.E., P.S.

DEVILLE DEVELOPMENTS, LLC
273-010935-00
INST. 201409180122977

OHIO-S.M. VENTURE LIMITED PARTNERSHIP,
AN ILLINOIS LIMITED PARTNERSHIP
273-008361-00
O.R. 28114, PG. C03

DUBLIN STATION LLC,
A DELAWARE LIMITED
LIABILITY COMPANY
273-008261-00
INST. 201409120121100



ANNEXATION
PLAT & DESCRIPTION
ACCEPTABLE
CORNELL R. ROBERTSON, P.E., P.S.
FRANKLIN COUNTY ENGINEER

By *[Signature]* Date 1/22/2020

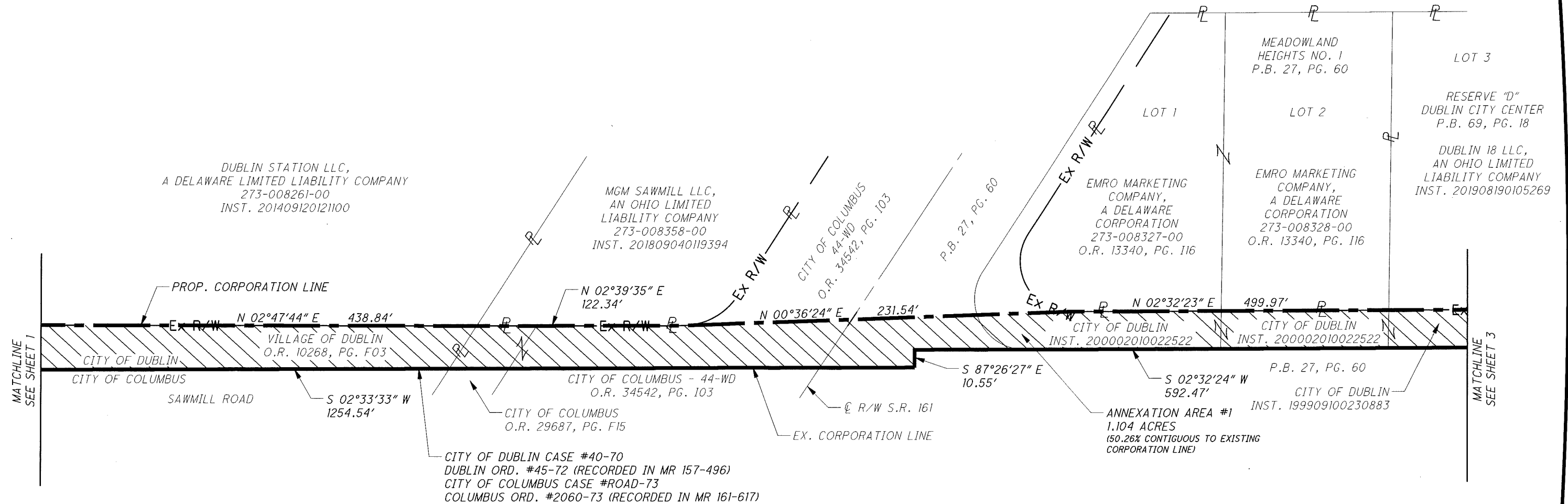
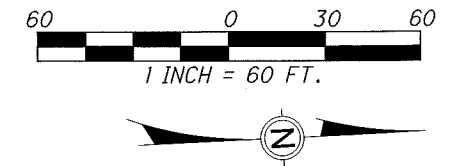
THIS EXHIBIT WAS CREATED USING AVAILABLE RECORD INFORMATION ONLY AND IS NOT AN ACTUAL FIELD SURVEY.

[Signature]
STEVEN L. MULLANEY, PROFESSIONAL LAND SURVEYOR 7900

1/22/2020
DATE

PROPOSED BOUNDARY ADJUSTMENT OF 13.224 AC. +/- FROM THE CITY OF DUBLIN TO THE CITY OF COLUMBUS

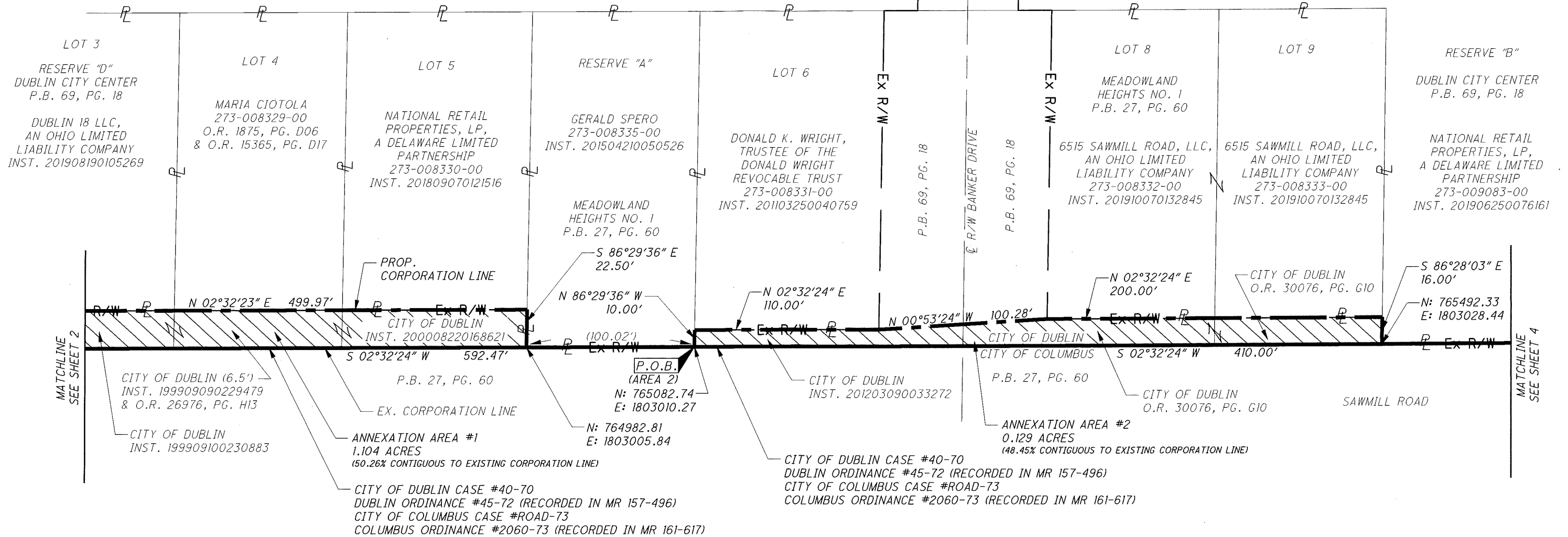
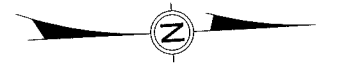
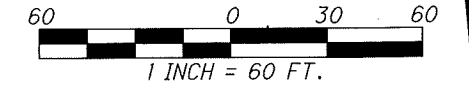
ANNEXATION AREA #1
 STATE OF OHIO
 FRANKLIN COUNTY
 CITY OF DUBLIN,
 CITY OF COLUMBUS,
 PERRY TOWNSHIP



PROPOSED BOUNDARY ADJUSTMENT OF 13.224 AC. +/- FROM THE CITY OF DUBLIN TO THE CITY OF COLUMBUS

ANNEXATION AREAS #1 & #2

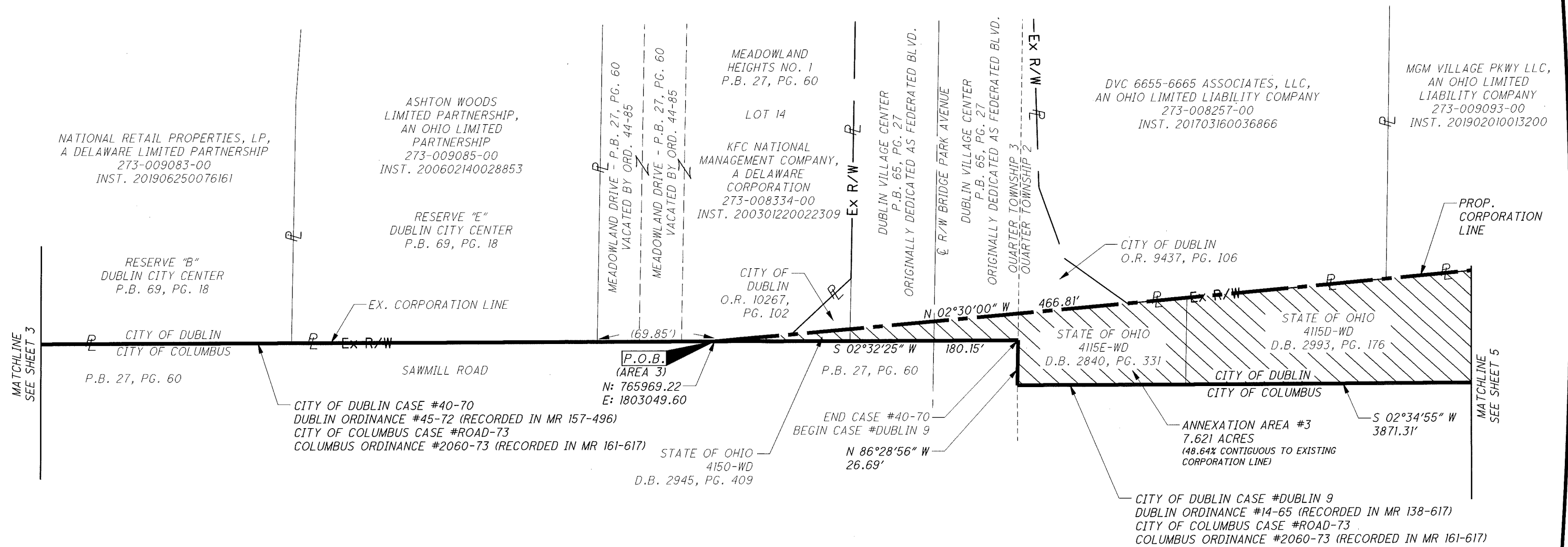
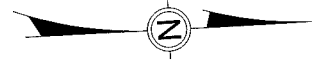
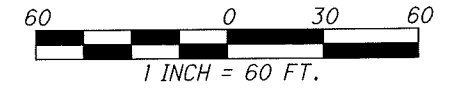
STATE OF OHIO
 FRANKLIN COUNTY
 CITY OF DUBLIN,
 CITY OF COLUMBUS,
 PERRY TOWNSHIP





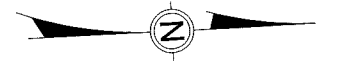
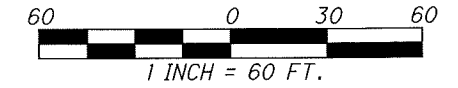
PROPOSED BOUNDARY ADJUSTMENT OF 13.224 AC. +/- FROM THE CITY OF DUBLIN TO THE CITY OF COLUMBUS

ANNEXATION AREA #3
STATE OF OHIO
FRANKLIN COUNTY
CITY OF DUBLIN,
CITY OF COLUMBUS,
PERRY TOWNSHIP



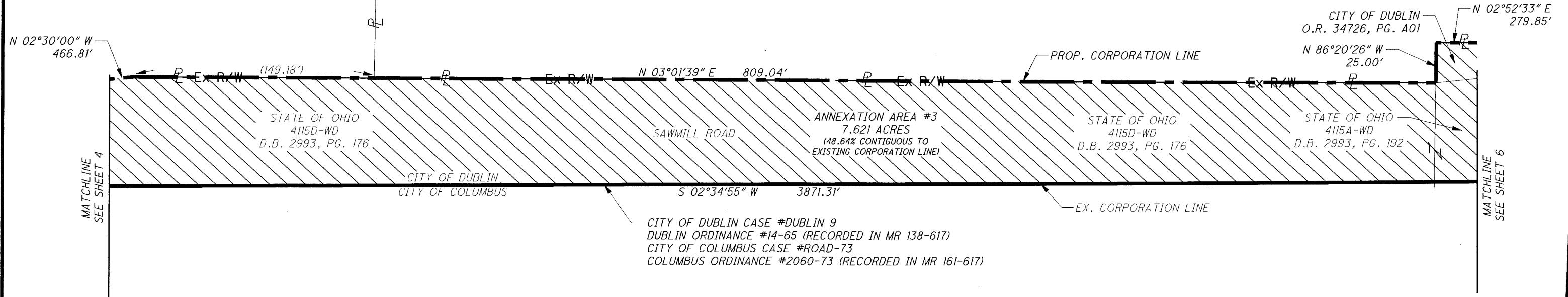
PROPOSED BOUNDARY ADJUSTMENT OF 13.224 AC. +/- FROM THE CITY OF DUBLIN TO THE CITY OF COLUMBUS

ANNEXATION AREA #3
 STATE OF OHIO
 FRANKLIN COUNTY
 CITY OF DUBLIN,
 CITY OF COLUMBUS,
 PERRY TOWNSHIP



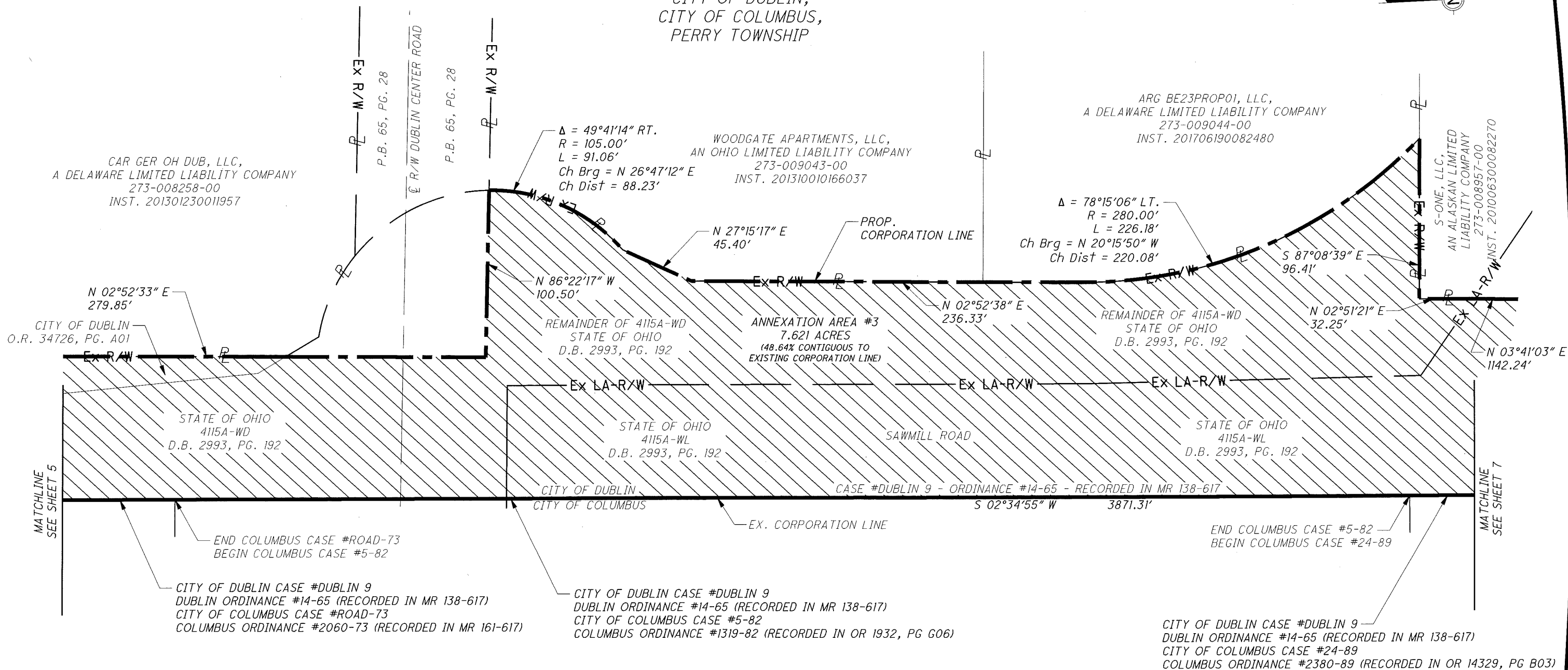
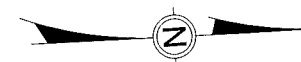
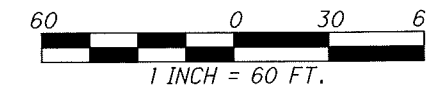
MGM VILLAGE PKWY LLC,
 AN OHIO LIMITED LIABILITY COMPANY
 273-009093-00
 INST. 201902010013200

CAR GER OH DUB, LLC,
 A DELAWARE LIMITED LIABILITY COMPANY
 273-008258-00
 INST. 201301230011957



PROPOSED BOUNDARY ADJUSTMENT OF 13.224 AC. +/- FROM THE CITY OF DUBLIN TO THE CITY OF COLUMBUS

ANNEXATION AREA #3
 STATE OF OHIO
 FRANKLIN COUNTY
 CITY OF DUBLIN,
 CITY OF COLUMBUS,
 PERRY TOWNSHIP



MATCHLINE
SEE SHEET 5

MATCHLINE
SEE SHEET 7

END COLUMBUS CASE #ROAD-73
 BEGIN COLUMBUS CASE #5-82

CITY OF DUBLIN CASE #DUBLIN 9
 DUBLIN ORDINANCE #14-65 (RECORDED IN MR 138-617)
 CITY OF COLUMBUS CASE #ROAD-73
 COLUMBUS ORDINANCE #2060-73 (RECORDED IN MR 161-617)

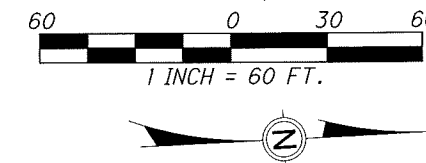
CITY OF DUBLIN CASE #DUBLIN 9
 DUBLIN ORDINANCE #14-65 (RECORDED IN MR 138-617)
 CITY OF COLUMBUS CASE #5-82
 COLUMBUS ORDINANCE #1319-82 (RECORDED IN OR 1932, PG G06)

CITY OF DUBLIN CASE #DUBLIN 9
 DUBLIN ORDINANCE #14-65 (RECORDED IN MR 138-617)
 CITY OF COLUMBUS CASE #24-89
 COLUMBUS ORDINANCE #2380-89 (RECORDED IN OR 14329, PG B03)



PROPOSED BOUNDARY ADJUSTMENT OF 13.224 AC. +/- FROM THE CITY OF DUBLIN TO THE CITY OF COLUMBUS

ANNEXATION AREA #3
 STATE OF OHIO
 FRANKLIN COUNTY
 CITY OF DUBLIN,
 CITY OF COLUMBUS,
 PERRY TOWNSHIP

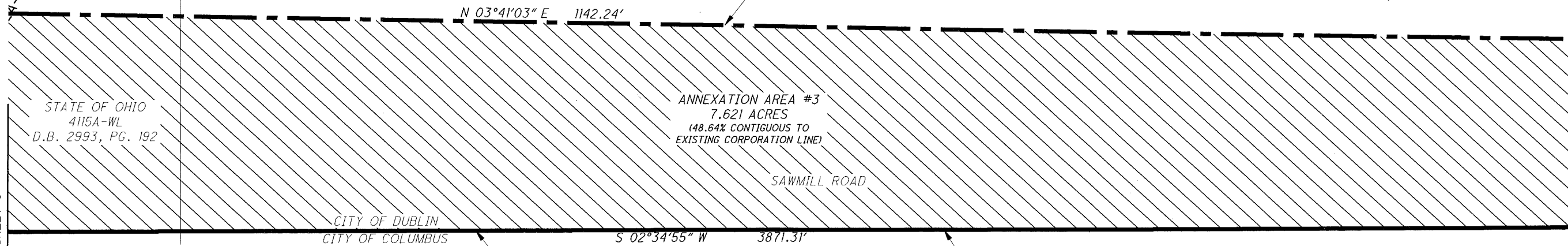


S-ONE, LLC,
 AN ALASKAN LIMITED
 LIABILITY COMPANY
 273-008957-00
 INST. 201006300082270

I-270

STATE OF OHIO
 4111-WL
 D.B. 2853, PG. 260

STATE OF OHIO
 4111-WL
 D.B. 2853, PG. 260



MATCHLINE
 SEE SHEET 6

MATCHLINE
 SEE SHEET 8

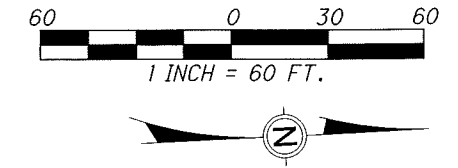
EX. CORPORATION LINE

PROP. CORPORATION LINE

CITY OF DUBLIN CASE #DUBLIN 9
 DUBLIN ORDINANCE #14-65 (RECORDED IN MR 138-617)
 CITY OF COLUMBUS CASE #24-89
 COLUMBUS ORDINANCE #2380-89 (RECORDED IN OR 14329, PG B03)

PROPOSED BOUNDARY ADJUSTMENT OF 13.224 AC. +/- FROM THE CITY OF DUBLIN TO THE CITY OF COLUMBUS

ANNEXATION AREA #3
 STATE OF OHIO
 FRANKLIN COUNTY
 CITY OF DUBLIN,
 CITY OF COLUMBUS,
 PERRY TOWNSHIP

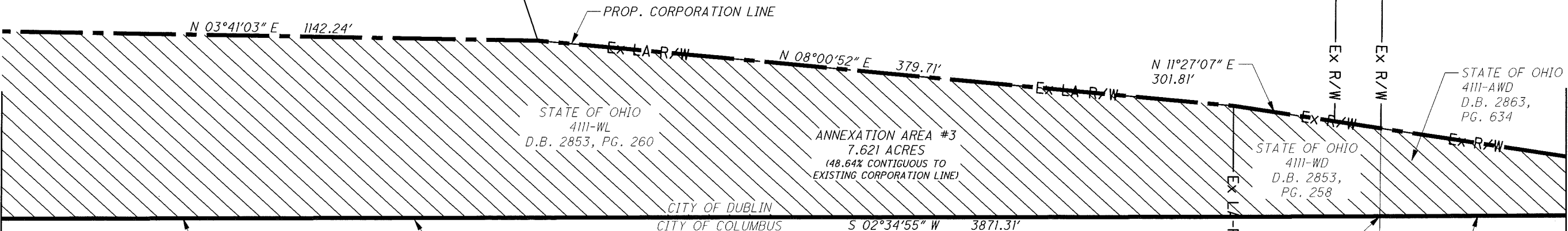


MCKITRICK PROPERTIES, INC.
 273-008610-00
 O.R. 11349, PG. F-01

BOARD OF TRUSTEES
 OF PERRY TOWNSHIP,
 FRANKLIN COUNTY, OHIO
 D.B. 3549, PG. 352

PERRY TOWNSHIP,
 FRANKLIN COUNTY, OHIO,
 BOARD OF TRUSTEES
 273-008792-00
 D.B. 2433, PG. 600

STATE OF OHIO
 4111-WL
 D.B. 2853, PG. 260



MATCHLINE
 SEE SHEET 7

MATCHLINE
 SEE SHEET 9

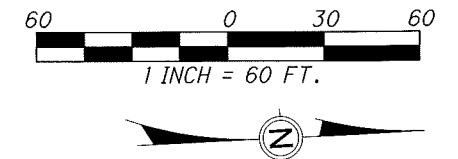
CITY OF DUBLIN CASE #DUBLIN 9
 DUBLIN ORDINANCE #14-65 (RECORDED IN MR 138-617)
 CITY OF COLUMBUS CASE #24-89
 COLUMBUS ORDINANCE #2380-89 (RECORDED IN OR 14329, PG B03)

END CASE #DUBLIN 9
 BEGIN CASE #36-73
 CITY OF DUBLIN CASE #36-73
 DUBLIN ORDINANCE #3-74 (RECORDED IN MR 161-354)
 CITY OF COLUMBUS CASE #24-89
 COLUMBUS ORDINANCE #2380-89 (RECORDED IN OR 14329, PG B03)



**PROPOSED BOUNDARY ADJUSTMENT OF 13.224 AC. +/-
 FROM THE CITY OF DUBLIN TO THE CITY OF COLUMBUS**

ANNEXATION AREA #3
 STATE OF OHIO
 FRANKLIN COUNTY
 CITY OF DUBLIN,
 CITY OF COLUMBUS,
 PERRY TOWNSHIP



PERRY TOWNSHIP,
 FRANKLIN COUNTY, OHIO
 BOARD OF TRUSTEES
 273-008259-00
 D.B. 2433, PG. 600

PERRY TOWNSHIP,
 FRANKLIN COUNTY, OHIO,
 BOARD OF TRUSTEES
 273-008792-00
 D.B. 2433, PG. 600

RIC PROPERTIES, LTD.
 273-008890-00
 O.R. 6373, PG. 1-15

15' UTILITY EASEMENT
 D.B. 2943, PG. 299

MILLER INVESTMENTS CO.,
 AN OHIO GENERAL
 PARTNERSHIP
 273-009469-00
 INST. 199806250157989

MILLCO OFFICE PARK
 P.B. 87, PG. 74
 LOT 1

VILLAGE AT INVERNESS
 PROFESSIONAL OFFICE CONDOMINIUM
 C.P.B. 32, PG. 1

VILLAGE AT INVERNESS
 PROFESSIONAL OFFICE CONDOMINIUM
 2ND AMENDMENT
 C.P.B. 34, PG. 28

CITY OF DUBLIN
 117-WDV
 INST. 201409150121571

ANNEXATION AREA #3
 7.621 ACRES
 (48.64% CONTIGUOUS TO
 EXISTING CORPORATION LINE)

PROP.
 CORPORATION LINE

N 11°27'07" E
 301.81'

N 05°24'49" E
 84.09'

N: 770015.37
 E: 1803249.05

EX. CORPORATION LINE

STATE OF OHIO - 4111-BWD
 D.B. 2810, PG. 565

STATE OF OHIO - 4111C-WD
 D.B. 2879, PG. 135

P.B. 61, PG. 42

SAWMILL ROAD

CITY OF COLUMBUS CASE #BC-1990
 COLUMBUS ORDINANCE #2718-89
 CITY OF DUBLIN CASE #36-73
 DUBLIN ORDINANCE #3-74 (RECORDED IN MR 161-354)

P.B. 61, PG. 42

FRANKLIN COUNTY
 COMMISSIONERS - 12-WD
 O.R. 10522, PG. D02

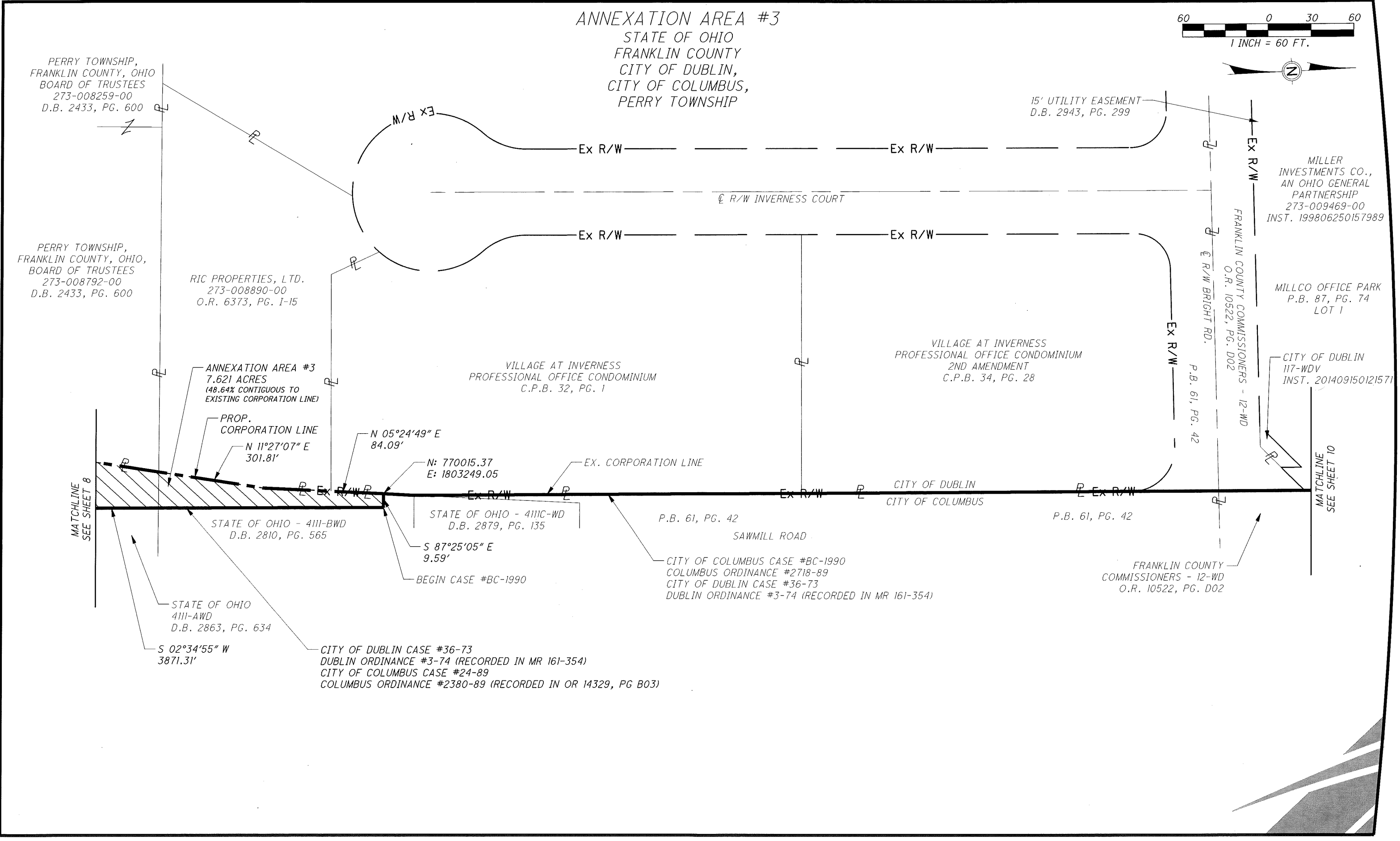
STATE OF OHIO
 4111-AWD
 D.B. 2863, PG. 634

S 02°34'55" W
 3871.31'

CITY OF DUBLIN CASE #36-73
 DUBLIN ORDINANCE #3-74 (RECORDED IN MR 161-354)
 CITY OF COLUMBUS CASE #24-89
 COLUMBUS ORDINANCE #2380-89 (RECORDED IN OR 14329, PG B03)

MATCHLINE
SEE SHEET 8

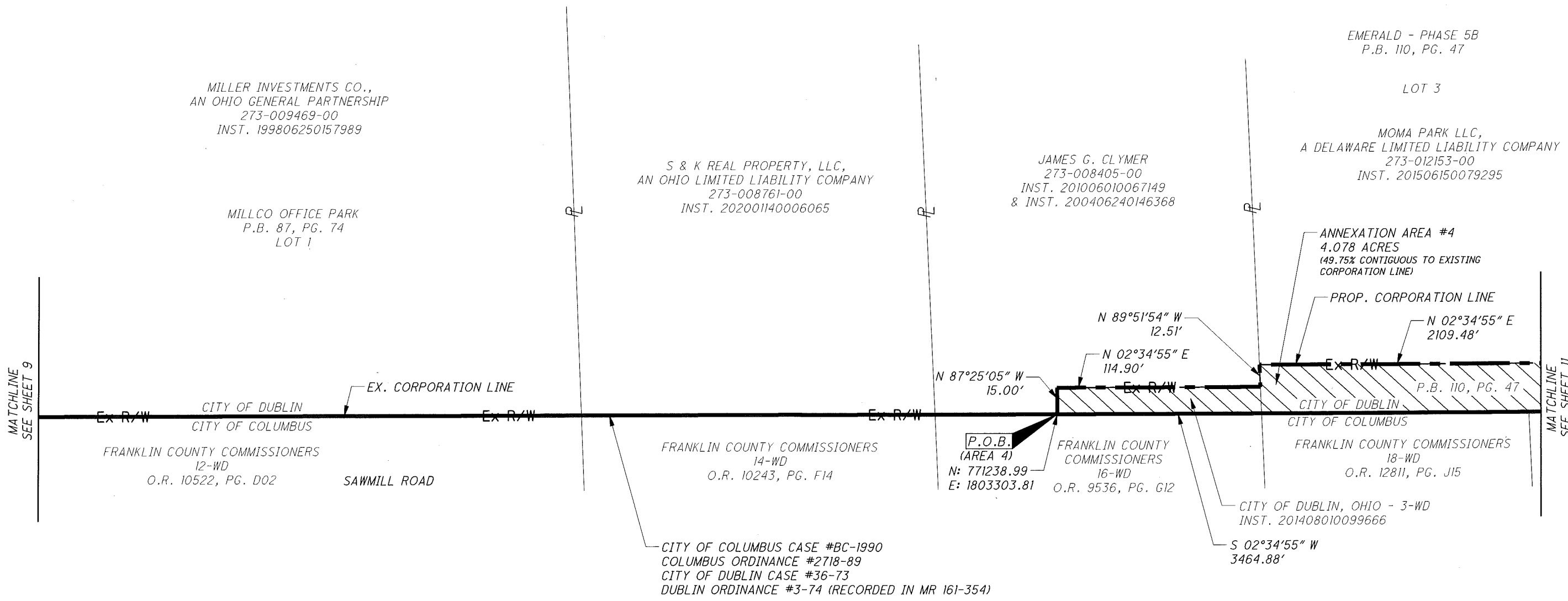
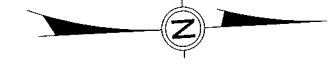
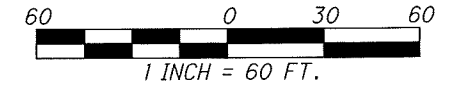
MATCHLINE
SEE SHEET 10





PROPOSED BOUNDARY ADJUSTMENT OF 13.224 AC. +/- FROM THE CITY OF DUBLIN TO THE CITY OF COLUMBUS

ANNEXATION AREA #4
STATE OF OHIO
FRANKLIN COUNTY
CITY OF DUBLIN,
CITY OF COLUMBUS,
PERRY TOWNSHIP



EMERALD - PHASE 5B
P.B. 110, PG. 47

LOT 3

MOMA PARK LLC,
A DELAWARE LIMITED LIABILITY COMPANY
273-012153-00
INST. 201506150079295

MILLER INVESTMENTS CO.,
AN OHIO GENERAL PARTNERSHIP
273-009469-00
INST. 199806250157989

MILLCO OFFICE PARK
P.B. 87, PG. 74
LOT 1

S & K REAL PROPERTY, LLC,
AN OHIO LIMITED LIABILITY COMPANY
273-008761-00
INST. 202001140006065

JAMES G. CLYMER
273-008405-00
INST. 201006010067149
& INST. 200406240146368

ANNEXATION AREA #4
4.078 ACRES
(49.75% CONTIGUOUS TO EXISTING
CORPORATION LINE)

PROP. CORPORATION LINE

N 89°51'54" W
12.51'

N 02°34'55" E
114.90'

N 87°25'05" W
15.00'

N 02°34'55" E
2109.48'

MATCHLINE
SEE SHEET 9

MATCHLINE
SEE SHEET 11

FRANKLIN COUNTY COMMISSIONERS
12-WD
O.R. 10522, PG. D02

SAWMILL ROAD

FRANKLIN COUNTY COMMISSIONERS
14-WD
O.R. 10243, PG. F14

P.O.B.
(AREA 4)
N: 771238.99
E: 1803303.81

FRANKLIN COUNTY COMMISSIONERS
16-WD
O.R. 9536, PG. G12

FRANKLIN COUNTY COMMISSIONERS
18-WD
O.R. 12811, PG. J15

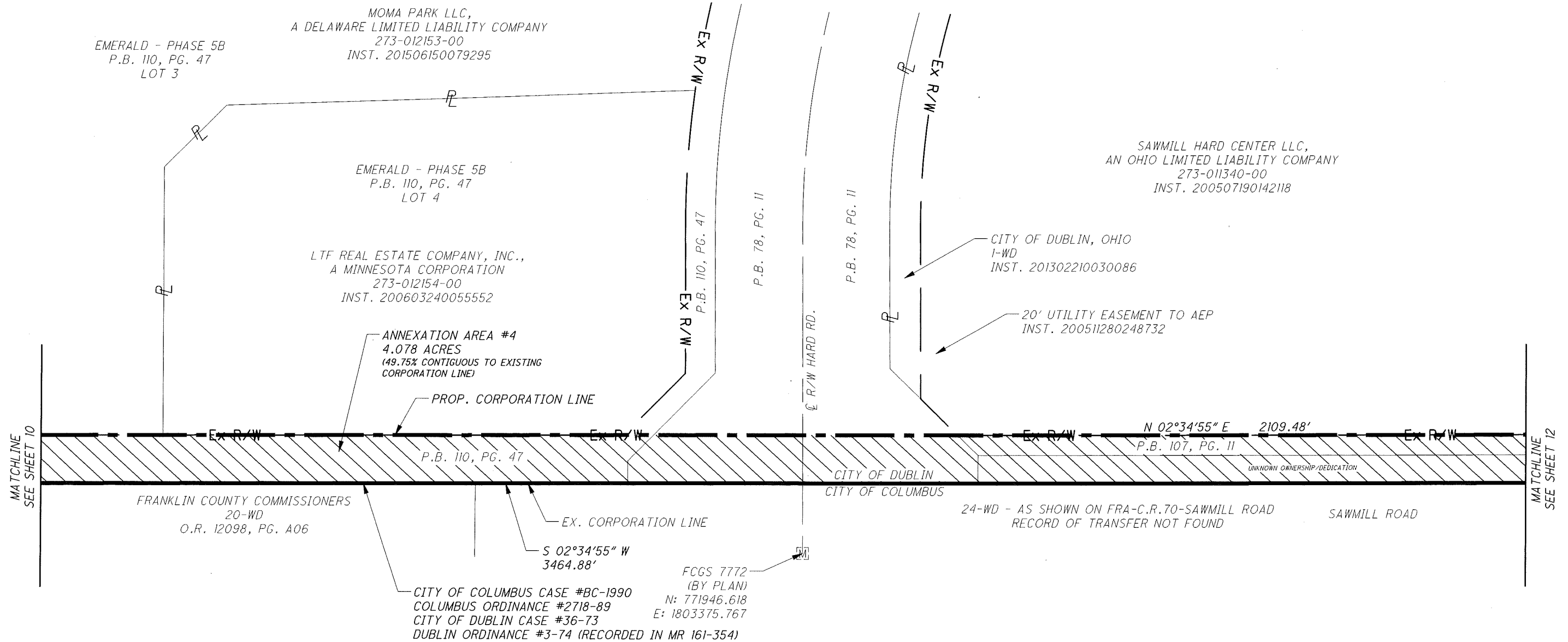
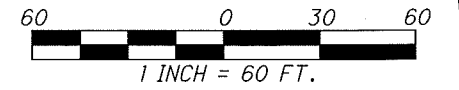
CITY OF DUBLIN, OHIO - 3-WD
INST. 201408010099666

S 02°34'55" W
3464.88'

CITY OF COLUMBUS CASE #BC-1990
COLUMBUS ORDINANCE #2718-89
CITY OF DUBLIN CASE #36-73
DUBLIN ORDINANCE #3-74 (RECORDED IN MR 161-354)

PROPOSED BOUNDARY ADJUSTMENT OF 13.224 AC. +/- FROM THE CITY OF DUBLIN TO THE CITY OF COLUMBUS

ANNEXATION AREA #4
 STATE OF OHIO
 FRANKLIN COUNTY
 CITY OF DUBLIN,
 CITY OF COLUMBUS,
 PERRY TOWNSHIP



MATCHLINE
SEE SHEET 10

MATCHLINE
SEE SHEET 12

FRANKLIN COUNTY COMMISSIONERS
 20-WD
 O.R. 12098, PG. A06

CITY OF COLUMBUS CASE #BC-1990
 COLUMBUS ORDINANCE #2718-89
 CITY OF DUBLIN CASE #36-73
 DUBLIN ORDINANCE #3-74 (RECORDED IN MR 161-354)

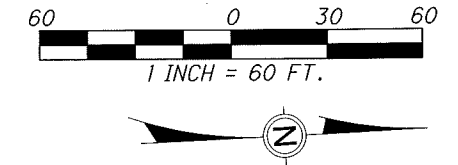
FCGS 7772
 (BY PLAN)
 N: 771946.618
 E: 1803375.767

24-WD - AS SHOWN ON FRA-C.R.70-SAWMILL ROAD
 RECORD OF TRANSFER NOT FOUND

SAWMILL ROAD

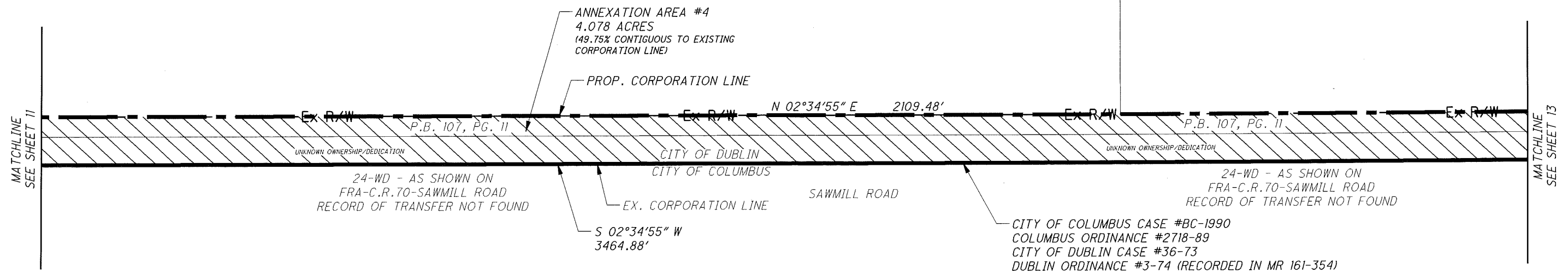
PROPOSED BOUNDARY ADJUSTMENT OF 13.224 AC. +/- FROM THE CITY OF DUBLIN TO THE CITY OF COLUMBUS

ANNEXATION AREA #4
 STATE OF OHIO
 FRANKLIN COUNTY
 CITY OF DUBLIN,
 CITY OF COLUMBUS,
 PERRY TOWNSHIP



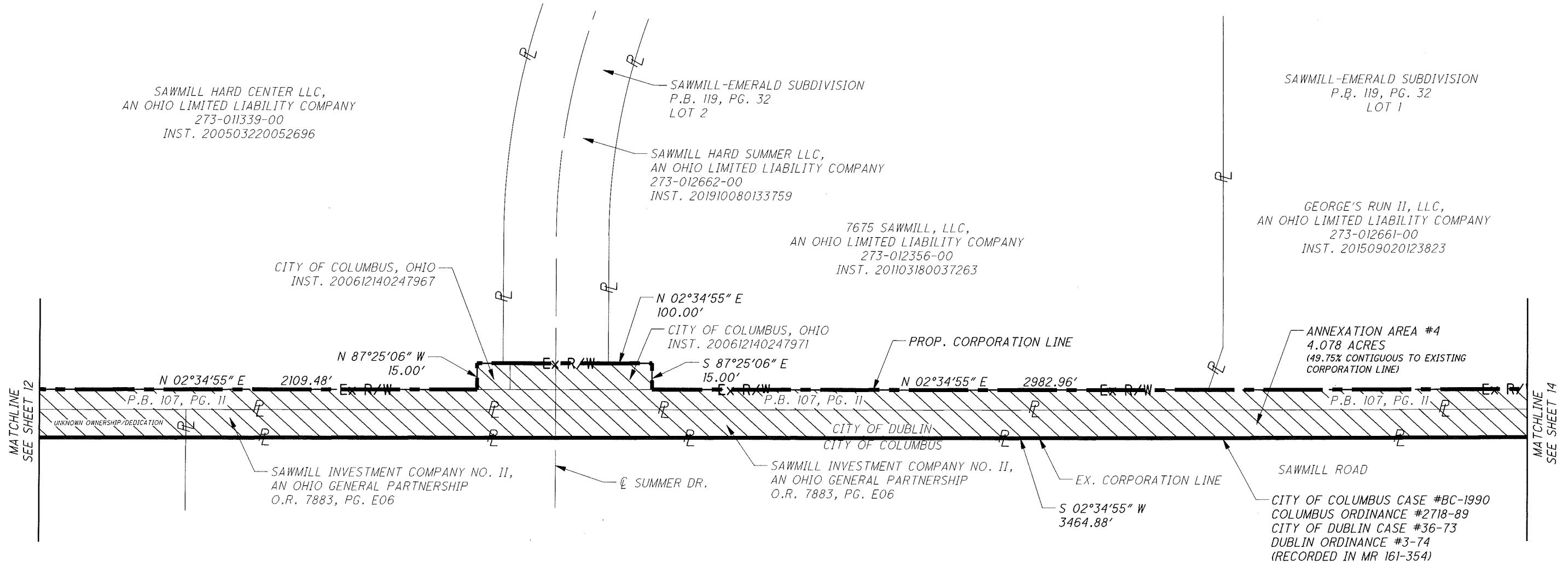
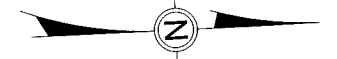
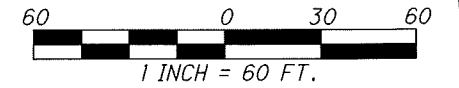
SAWMILL HARD CENTER LLC,
 AN OHIO LIMITED LIABILITY COMPANY
 273-011340-00
 INST. 200507190142118

SAWMILL HARD CENTER LLC,
 AN OHIO LIMITED LIABILITY COMPANY
 273-011339-00
 INST. 200503220052696



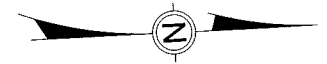
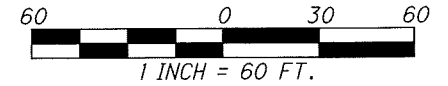
PROPOSED BOUNDARY ADJUSTMENT OF 13.224 AC. +/- FROM THE CITY OF DUBLIN TO THE CITY OF COLUMBUS

ANNEXATION AREA #4
 STATE OF OHIO
 FRANKLIN COUNTY
 CITY OF DUBLIN,
 CITY OF COLUMBUS,
 PERRY TOWNSHIP



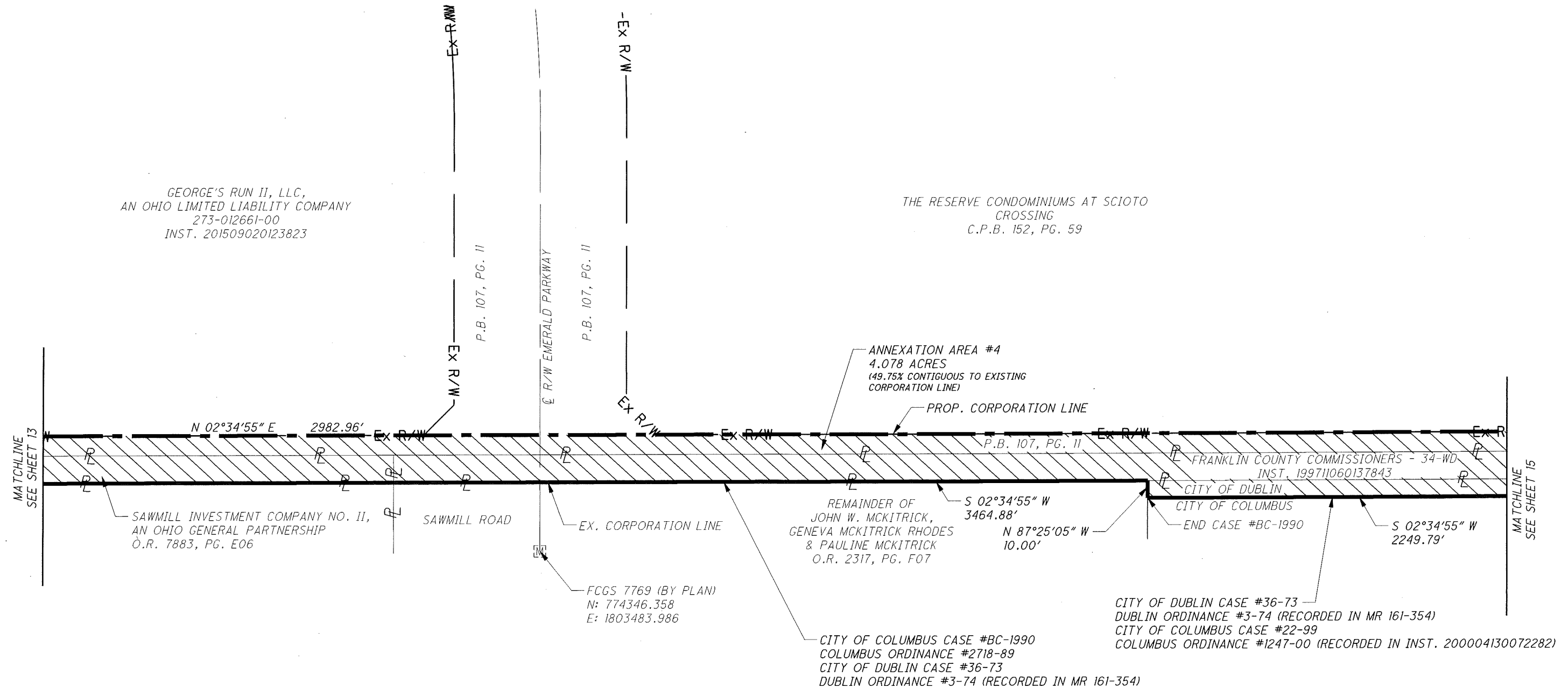
PROPOSED BOUNDARY ADJUSTMENT OF 13.224 AC. +/- FROM THE CITY OF DUBLIN TO THE CITY OF COLUMBUS

ANNEXATION AREA #4
 STATE OF OHIO
 FRANKLIN COUNTY
 CITY OF DUBLIN,
 CITY OF COLUMBUS,
 PERRY TOWNSHIP



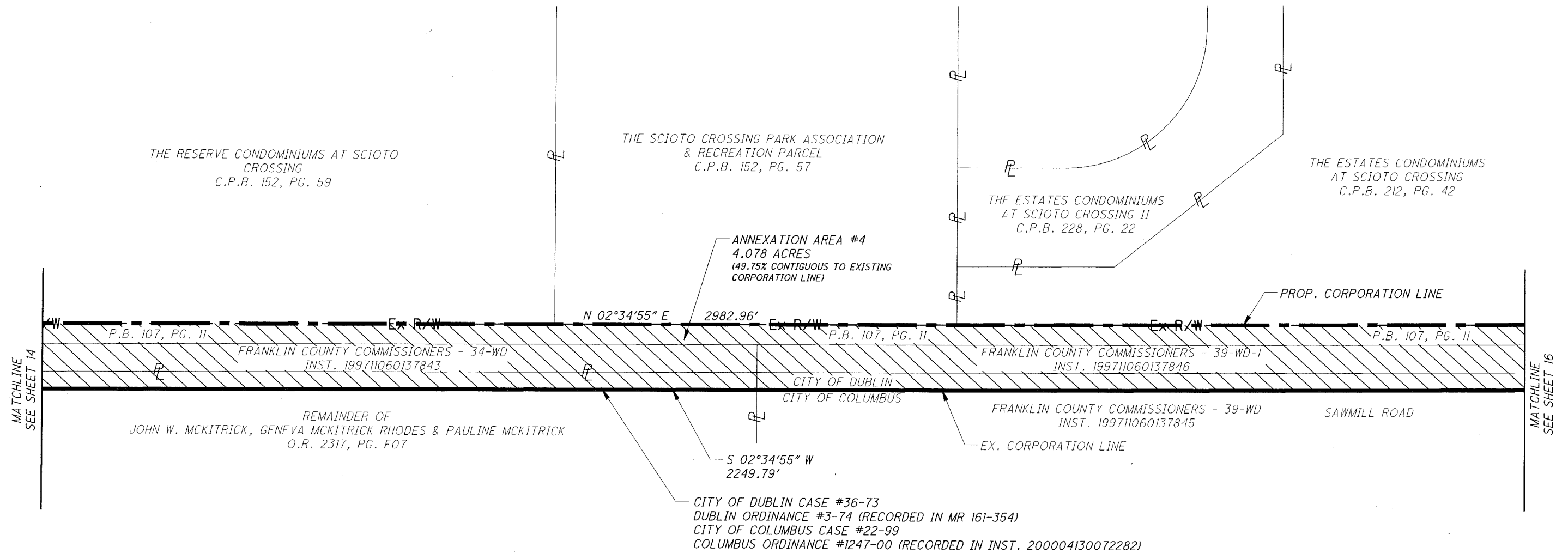
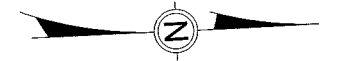
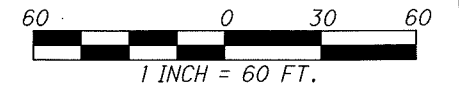
GEORGE'S RUN II, LLC,
 AN OHIO LIMITED LIABILITY COMPANY
 273-012661-00
 INST. 201509020123823

THE RESERVE CONDOMINIUMS AT SCIOTO
 CROSSING
 C.P.B. 152, PG. 59



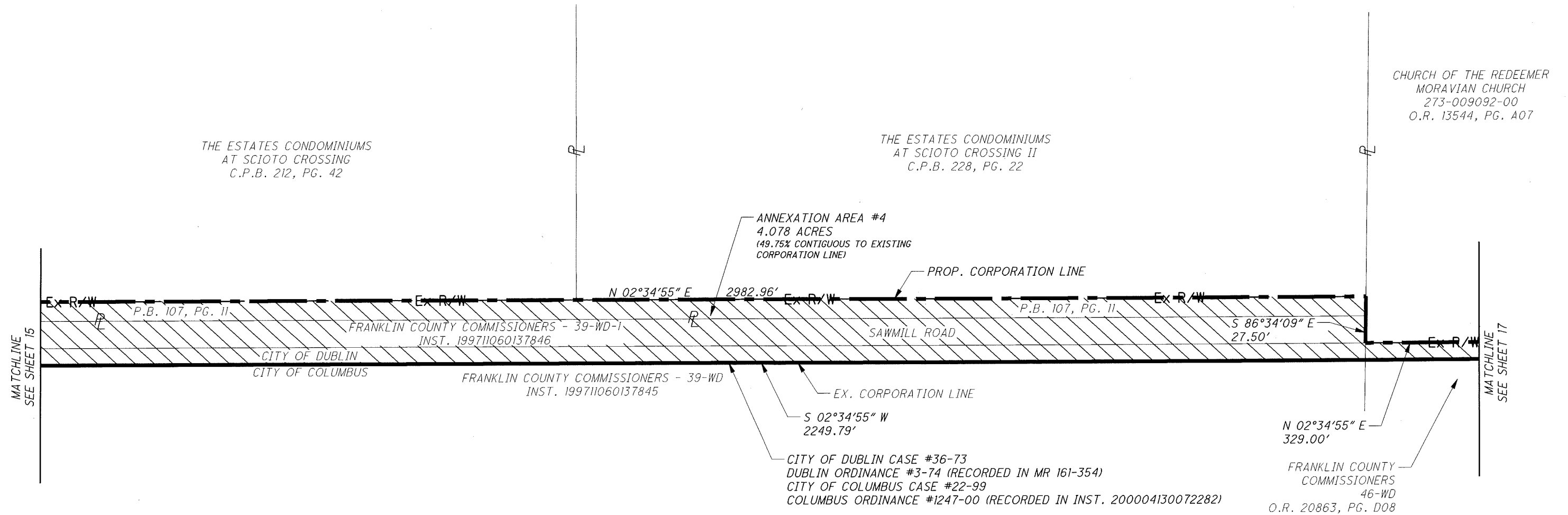
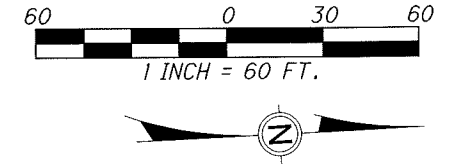
PROPOSED BOUNDARY ADJUSTMENT OF 13.224 AC. +/- FROM THE CITY OF DUBLIN TO THE CITY OF COLUMBUS

ANNEXATION AREA #4
 STATE OF OHIO
 FRANKLIN COUNTY
 CITY OF DUBLIN,
 CITY OF COLUMBUS,
 PERRY TOWNSHIP



PROPOSED BOUNDARY ADJUSTMENT OF 13.224 AC. +/- FROM THE CITY OF DUBLIN TO THE CITY OF COLUMBUS

ANNEXATION AREA #4
 STATE OF OHIO
 FRANKLIN COUNTY
 CITY OF DUBLIN,
 CITY OF COLUMBUS,
 PERRY TOWNSHIP



MATCHLINE
SEE SHEET 15

MATCHLINE
SEE SHEET 17

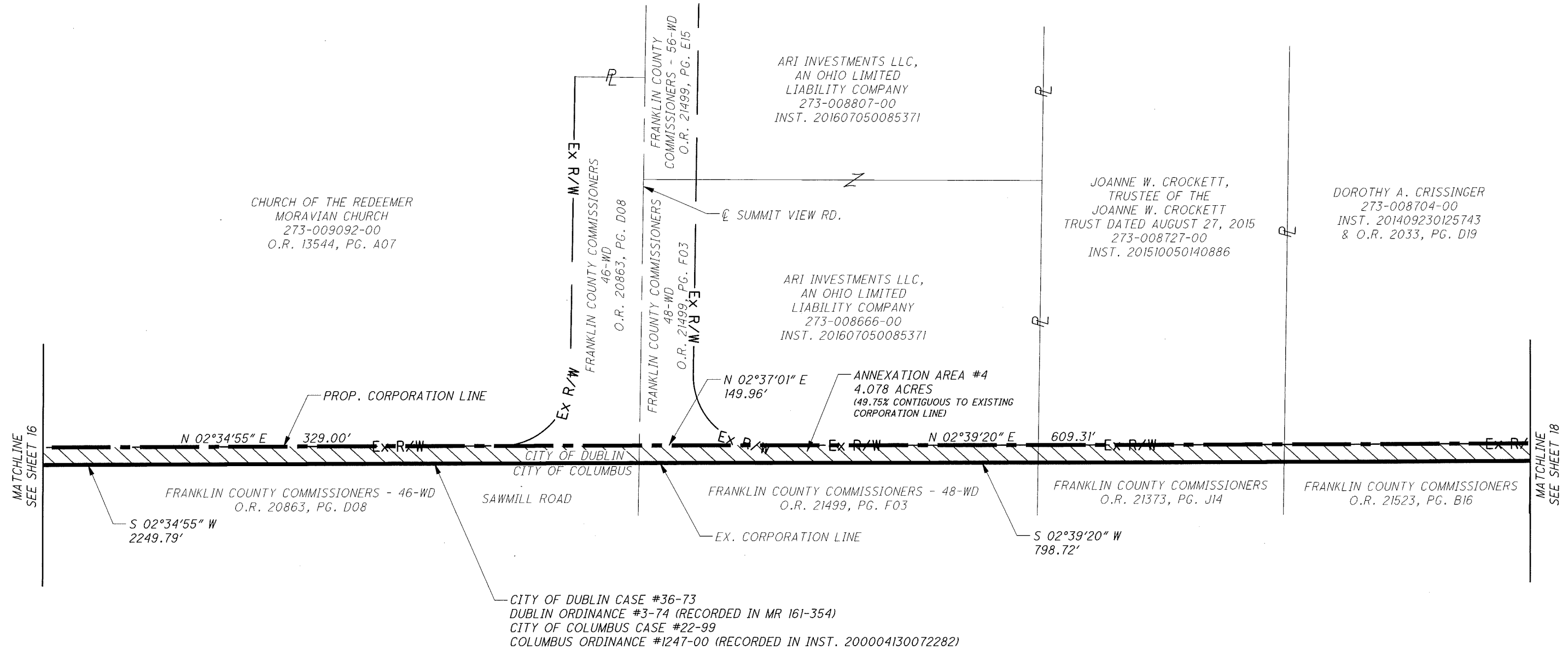
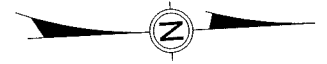
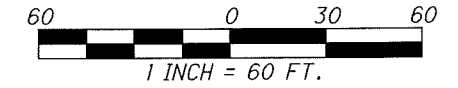
CHURCH OF THE REDEEMER
 MORAVIAN CHURCH
 273-009092-00
 O.R. 13544, PG. A07

N 02°34'55" E
 329.00'
 FRANKLIN COUNTY
 COMMISSIONERS
 46-WD
 O.R. 20863, PG. D08

CITY OF DUBLIN CASE #36-73
 DUBLIN ORDINANCE #3-74 (RECORDED IN MR 161-354)
 CITY OF COLUMBUS CASE #22-99
 COLUMBUS ORDINANCE #1247-00 (RECORDED IN INST. 200004130072282)

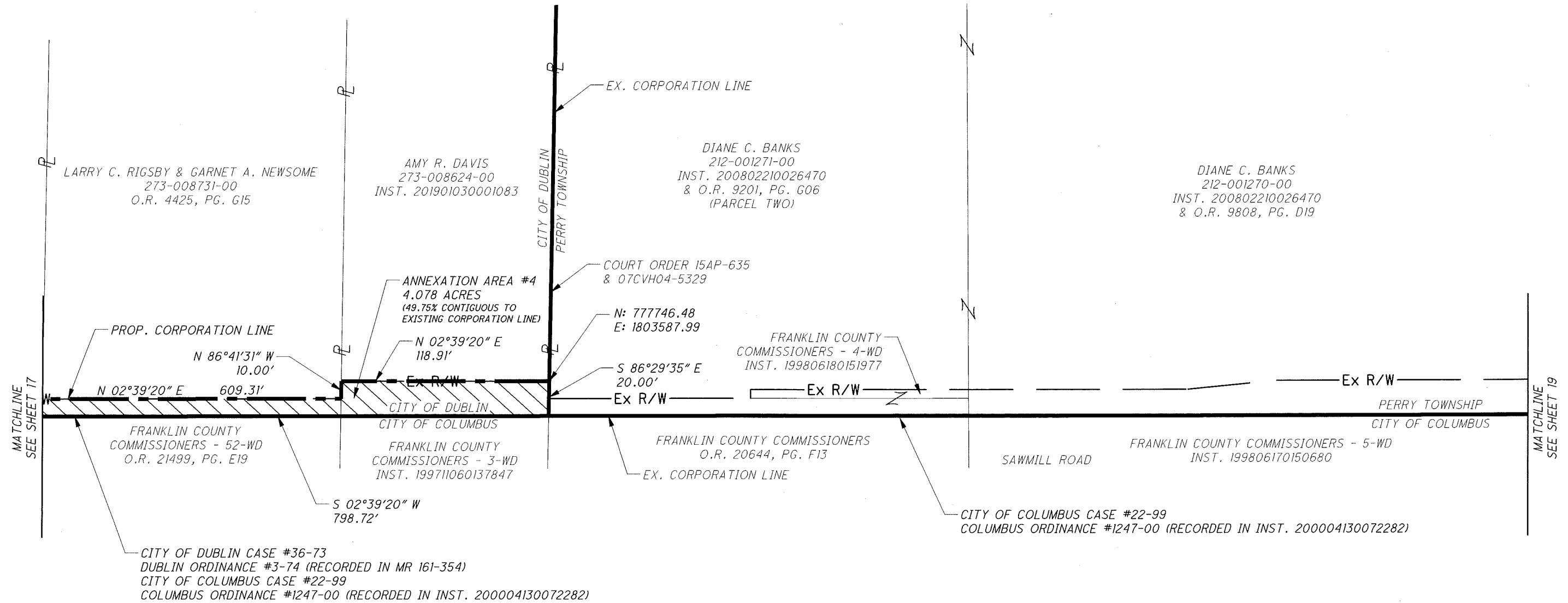
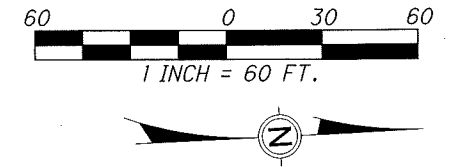
PROPOSED BOUNDARY ADJUSTMENT OF 13.224 AC. +/- FROM THE CITY OF DUBLIN TO THE CITY OF COLUMBUS

ANNEXATION AREA #4
 STATE OF OHIO
 FRANKLIN COUNTY
 CITY OF DUBLIN,
 CITY OF COLUMBUS,
 PERRY TOWNSHIP



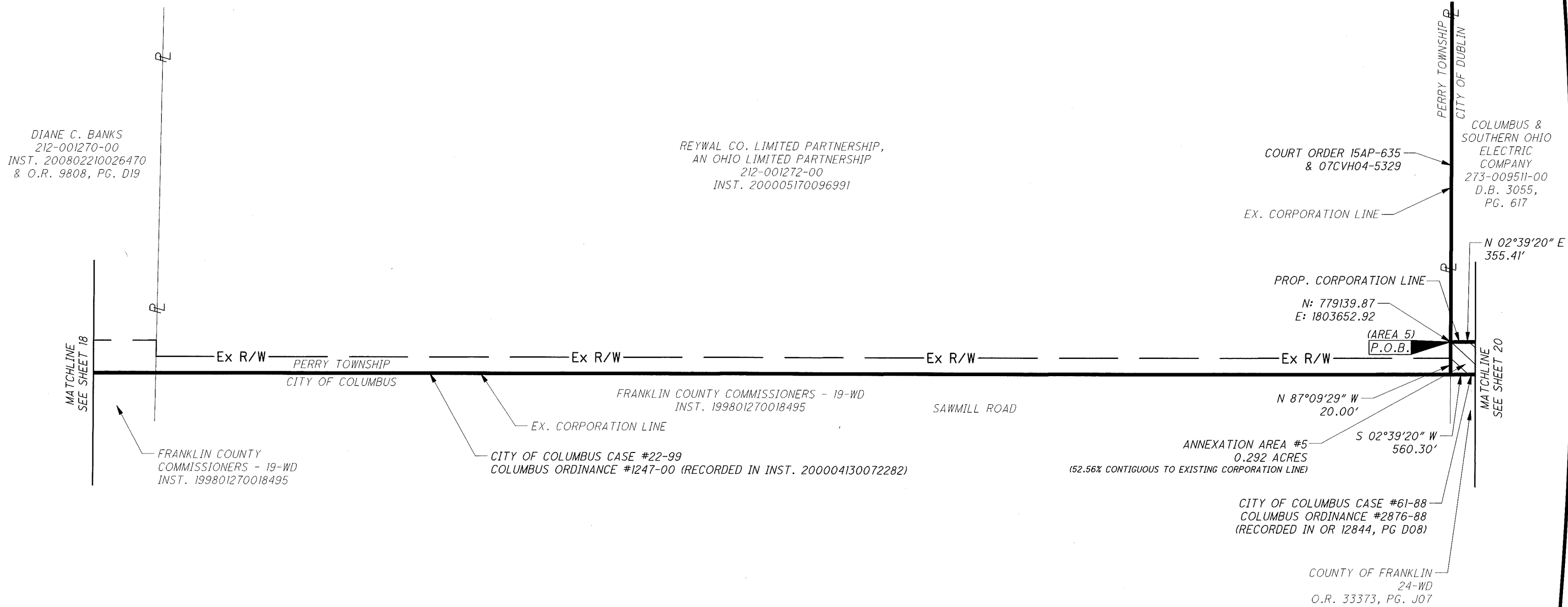
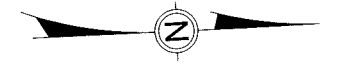
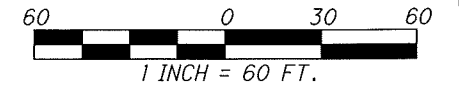
PROPOSED BOUNDARY ADJUSTMENT OF 13.224 AC. +/- FROM THE CITY OF DUBLIN TO THE CITY OF COLUMBUS

ANNEXATION AREA #4
 STATE OF OHIO
 FRANKLIN COUNTY
 CITY OF DUBLIN,
 CITY OF COLUMBUS,
 PERRY TOWNSHIP



PROPOSED BOUNDARY ADJUSTMENT OF 13.224 AC. +/- FROM THE CITY OF DUBLIN TO THE CITY OF COLUMBUS

ANNEXATION AREA #5
 STATE OF OHIO
 FRANKLIN COUNTY
 CITY OF DUBLIN,
 CITY OF COLUMBUS,
 PERRY TOWNSHIP



PROPOSED BOUNDARY ADJUSTMENT OF 13.224 AC. +/- FROM THE CITY OF DUBLIN TO THE CITY OF COLUMBUS

ANNEXATION AREA #5
 STATE OF OHIO
 FRANKLIN COUNTY
 CITY OF DUBLIN,
 CITY OF COLUMBUS,
 PERRY TOWNSHIP

