

**CENTRAL SURVEYING CO., LTD.**

7563 E. Main St.  
Reynoldsburg, Ohio 43068

Phone: 614-864-1100  
Fax: 614-864-2011

**Exhibit "A"**

**Description of a 0.145± Acre Electric Utility Easement  
(Tract 1)**

Situated in the State of Ohio, County of Delaware, Township of Liberty, Section 3, Township 3, Range 19, part of Farm Lot 14, United States Military Lands, and being part of a 70.30 acre tract of land conveyed to City of Columbus, Ohio as recorded in Deed Volume 248, page 110, all references contained herein are to Delaware County Recorder's records, Delaware, Ohio, and being a parcel of land for electric utility purposes, being shown on Exhibit "B" attached hereto and being made a part thereof and more particularly bounded and described as follows:

Beginning for reference at the northwesterly corner of a 19.630 acre tract of land conveyed to the City of Columbus, Ohio and the Franklin County Commissioners as recorded in Official Record 336, page 2538, said point being in the centerline of the former Powell Road (SR 750) and in the easterly line of said 70.30 acre tract;

Thence, S 02° 46' 19" W, 167.36 feet running with the easterly line of said 70.30 acre tract and the westerly line of said 19.630 acre tract to the True Point of Beginning of the herein described easement:

Thence, S 02° 46' 19" W, 52.39 feet continuing with said easterly line easterly line of said 70.30 acre tract and the westerly line of said 19.630 acre tract to a point;

Thence, running within said 70.30 acre tract of land the following thirteen (13) courses:

- 1) N 88° 26' 28" W, 39.95 feet to a point;
- 2) N 01° 33' 32" E, 15.00 feet to a point;
- 3) S 88° 26' 28" E, 2.56 feet to a point;
- 4) N 02° 58' 02" E, 219.10 feet to a point;
- 5) N 87° 01' 58" W, 84.87 feet to a point;
- 6) N 20° 02' 58" W, 17.54 feet to a point;
- 7) N 02° 58' 02" E, 31.56 feet to a point;
- 8) S 87° 01' 58" E, 40.00 feet to a point;
- 9) S 02° 58' 02" W, 37.70 feet to a point;
- 10) S 87° 01' 58" E, 61.73 feet to a point;

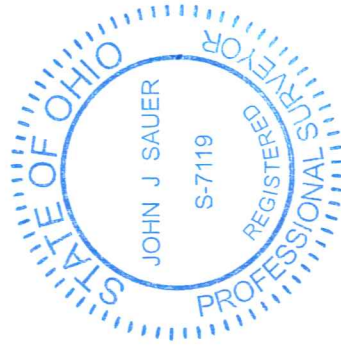
11) S 02° 58' 02" W, 190.55 feet to a point;

12) S 87° 01' 58" E, 27.25 feet to a point;

13) S 50° 28' 55" E, 0.40 feet the point of beginning and containing 0.145 acres of land, more or less.

Bearings are based on measurements and computations on the Ohio State Plane Coordinate System, NAD 83, Ohio North Zone.

This document is for easement purposes only and has been compiled using existing public records along with field collected information.



A handwritten signature in blue ink, appearing to read "John J. Sauer", written over a horizontal line.

John J. Sauer, P.S. 7119  
Central Surveying Co., Ltd.  
7563 East Main Street  
Reynoldsburg, OH 43068

**CENTRAL SURVEYING CO., LTD.**

7563 E. Main St.  
Reynoldsburg, Ohio 43068

Phone: 614-864-1100  
Fax: 614-864-2011

**Exhibit "A"**

**Description of a 0.044± Acre Electric Utility Easement  
(Tract 2)**

Situated in the State of Ohio, County of Delaware, Township of Liberty, Section 3, Township 3, Range 19, part of Farm Lot 14, United States Military Lands, and being part of a 70.30 acre tract of land conveyed to City of Columbus, Ohio as recorded in Deed Volume 248, page 110, all references contained herein are to Delaware County Recorder's records, Delaware, Ohio, and being a parcel of land for electric utility purposes, being shown on Exhibit "B" attached hereto and being made a part thereof and more particularly bounded and described as follows:

Beginning for reference at the northwesterly corner of a 19.630 acre tract of land conveyed to the City of Columbus, Ohio and the Franklin County Commissioners, as recorded in Official Record 336, page 2538, said point being in the centerline of the former Powell Road (SR 750) and in the easterly line of said 70.30 acre tract;

Thence, S 02° 46' 19" W, 493.54 feet running with the easterly line of said 70.30 acre tract and the westerly line of said 19.630 acre tract to the True Point of Beginning of the herein described easement:

Thence, S 02° 46' 19" W, 10.00 feet continuing with the easterly line of said 70.30 acre tract and the westerly line of said 19.630 acre tract to a point;

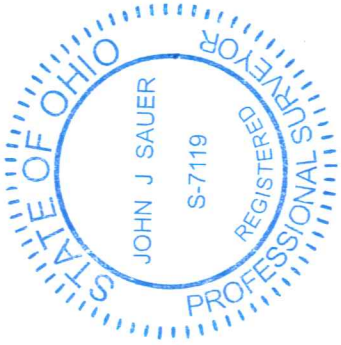
Thence, running within said 70.30 acre tract the following eleven (11) courses:

- 1) N 88° 44' 51" W, 50.03 feet to a point;
- 2) S 02° 13' 01" W, 65.14 feet to a point;
- 3) S 61° 40' 31" W, 58.57 feet to a point;
- 4) S 18° 06' 06" E, 2.47 feet to a point;
- 5) S 71° 53' 54" W, 10.00 feet to a point;
- 6) N 18° 06' 06" W, 14.00 feet to a point;
- 7) N 71° 53' 54" E, 10.00 feet to a point;
- 8) S 18° 06' 06" E, 1.37 feet to a point;
- 9) N 61° 40' 31" E, 51.05 feet to a point;
- 10) N 02° 13' 01" E, 69.26 feet to a point;

11) S 88° 44' 51" E, 60.13 feet to the point of beginning and containing 0.044 acres of land,  
more or less.

Bearings are based on measurements and computations on the Ohio State Plane Coordinate System,  
NAD 83, Ohio North Zone.

This document is for easement purposes only and has been compiled using existing public records along  
with field collected information.



A handwritten signature in blue ink, appearing to read "John J. Sauer", written over a horizontal line.

John J. Sauer, P.S. 7119  
Central Surveying Co., Ltd.  
7563 East Main Street  
Reynoldsburg, OH 43068

# EXHIBIT "B"

EXHIBIT "B" PREPARED BY:  
CENTRAL SURVEYING CO. LTD  
7563 EAST MAIN ST.  
REYNOLDSBURG, OHIO 43068  
614-864-1100



EASEMENT AREA CONTAINING  
0.145± ACRES TOTAL (TRACT 1)

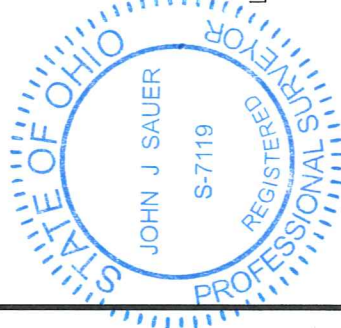
CITY OF COLUMBUS, OHIO AND  
FRANKLIN COUNTY COMMISSIONERS  
O.R.336PG.2538  
5.010 ACRES - 19.630 ACRES(TOTAL)  
PID:31933101002000

POINT OF BEGINNING  
TRACT 1

CITY OF COLUMBUS, OHIO  
D.B.248 PG.110  
70.30 ACRES  
PID:31933101003000

EASEMENT AREA CONTAINING  
0.044± ACRES TOTAL (TRACT 2)

POINT OF BEGINNING  
TRACT 2



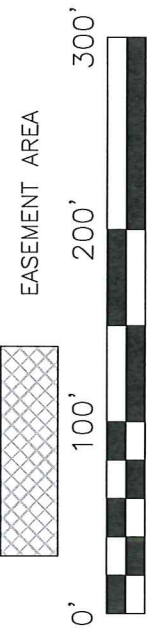
LINE	BEARING	DISTANCE
R1	S 02°46'19" W	167.36'
L1	S 02°46'19" W	52.39'
L2	N 88°26'28" W	39.95'
L3	N 01°33'32" E	15.00'
L4	S 88°26'28" E	2.56'
L5	N 02°58'02" E	219.10'
L6	N 87°01'58" W	84.87'
L7	N 20°02'58" W	17.54'
L8	N 02°58'02" E	31.56'
L9	S 87°01'58" E	40.00'
L10	S 02°58'02" W	37.70'
L11	S 87°01'58" E	61.73'
L12	S 02°58'02" W	190.55'
L13	S 87°01'58" E	27.25'
L14	S 50°28'55" E	0.40'
R2	S 02°46'19" W	493.54'
L15	S 02°46'19" W	10.00'
L16	N 88°44'51" W	50.03'
L17	S 02°13'01" W	65.14'
L18	S 61°40'31" W	58.57'
L19	S 18°06'06" E	2.47'
L20	S 71°53'54" W	10.00'
L21	N 18°06'06" W	14.00'
L22	N 71°53'54" E	10.00'
L23	S 18°06'06" E	1.37'
L24	N 61°40'31" E	51.05'
L25	N 02°13'01" E	69.26'
L26	S 88°44'51" E	60.13'

BASIS OF BEARINGS:  
BEARINGS ARE BASED ON THE OHIO STATE  
PLANE COORDINATE SYSTEM, NAD 83, OHIO  
NORTH ZONE.

SITUATE:  
SITUATED IN THE STATE OF OHIO, COUNTY  
OF DELAWARE, TOWNSHIP OF LIBERTY, FARM  
LOT 14, U.S.M. LANDS, SECTION 3,  
TOWNSHIP 3, RANGE 19, AND BEING PART  
OF A 70.30 ACRE TRACT OF LAND  
CONVEYED TO THE CITY OF COLUMBUS,  
OHIO AS RECORDED IN DEED VOLUME 248,  
PAGE 110, ALL REFERENCES CONTAINED  
HEREIN ARE TO DELAWARE COUNTY  
RECORDER'S RECORDS, DELAWARE COUNTY,  
OHIO.

NOTES:  
THIS DRAWING IS FOR EASEMENT PURPOSES  
ONLY AND HAS BEEN COMPILED USING  
EXISTING PUBLIC RECORDS ALONG WITH  
FIELD COLLECTED INFORMATION.

*John J. Sauer*  
JOHN J. SAUER P.S.7119



SCALE: 1 INCH = 100 FEET

**OHIO POWER COMPANY**  
EASEMENT ACROSS THE LANDS OF  
THE CITY OF COLUMBUS, OHIO  
CONTAINING 0.189± ACRES(TOTAL)

Drawn By: JS	Checked By: WW
Scale: 1"=100'	Date: 11/20/20
File Name: 20-0112-EAS-COC.DWG	Drawing Number:
Revisions: -	2020-0112

**CENTRAL SURVEYING CO., LTD.**

7563 E. Main St.  
Reynoldsburg, Ohio 43068

Phone: 614-864-1100  
Fax: 614-864-2011

**Exhibit "A"**

**Description of a 0.176 Acre Electric Utility Easement**

Situated in the State of Ohio, County of Delaware, Township of Liberty, Section 3, Township 3, Range 19, part of Farm Lot 13, United States Military Lands, and being part of a 19.630 acre tract of land conveyed to Franklin County Commissioners and City of Columbus, Ohio, as recorded in Official Record 336, page 2538, all references contained herein are to Delaware County Recorder's records, Delaware, Ohio, and being a parcel of land for electric utility purposes, being shown on Exhibit "B" attached hereto and being made a part thereof and more particularly bounded and described as follows:

Beginning for reference at the northwesterly corner of said 19.630 acre tract, said point being in the centerline of the former Powell Road (SR 750) and in the easterly line of said 70.30 acre tract;

Thence, S 02° 46' 19" W, 167.36 feet running with the westerly line of said 19.630 acre tract and the easterly line of said 70.30 acre tract to the True Point of Beginning of the herein described easement:

Thence, running within said 19.630 acre tract of land the following fifteen (15) courses:

1. S 50° 28' 55" E, 237.13 feet to a point;
2. N 21° 02' 15" E, 0.73 feet to a point;
3. S 68° 57' 45" E, 10.00 feet to a point;
4. S 21° 02' 15" W, 12.00 feet to a point;
5. N 68° 57' 45" W, 2.88 feet to a point;
6. S 53° 23' 45" W, 62.39 feet to a point;
7. S 02° 22' 26" W, 23.85 feet to a point;
8. S 61° 09' 08" E, 69.47 feet to a point;
9. N 51° 29' 07" E, 2.50 feet to a point;
10. S 38° 30' 53" E, 14.00 feet to a point;
11. S 51° 29' 07" W 10.00 feet to a point;
12. N 38° 30' 53" W, 1.04 feet to a point;
13. S 35° 35' 51" W, 56.09 feet to a point;

14. S 57° 13' 19" W, 37.17 feet to a point;

15. N 88° 44' 51" W, 149.89 feet to a point in the westerly line of said 19.630 acre tract;

Thence, N 02° 46' 19" E, 10.00 feet running with the westerly line of said 19.630 acre tract and the easterly line of said 70.30 acre tract to a point;

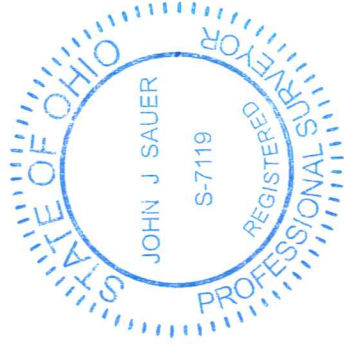
Thence, running within said 19.630 acre tract the following eight (8) courses:

1. S 88° 44' 51" E, 146.57 feet to a point;
2. N 57° 13' 19" E, 32.20 feet to a point;
3. N 35° 35' 51" E, 54.92 feet to a point;
4. N 61° 09' 08" W, 74.89 feet to a point;
5. N 02° 22' 26" E, 34.82 feet to a point;
6. N 53° 23' 45" E, 63.08 feet to a point;
7. N 50° 28' 55" W, 164.43 feet to a point;
8. N 88° 26' 28" W, 51.99 feet to a point;

Thence, N 02° 46' 19" E, 52.39 feet running with the westerly line of said 19.630 acre tract and the easterly line of said 70.30 acre tract to the point of beginning and containing 0.176 acres of land, more or less.

Bearings are based on measurements and computations on the Ohio State Plane Coordinate System, NAD 83, Ohio North Zone.

This document is for easement purposes only and has been compiled using existing public records along with field collected information.



A handwritten signature in blue ink, appearing to read "John J. Sauer", written over a horizontal line.

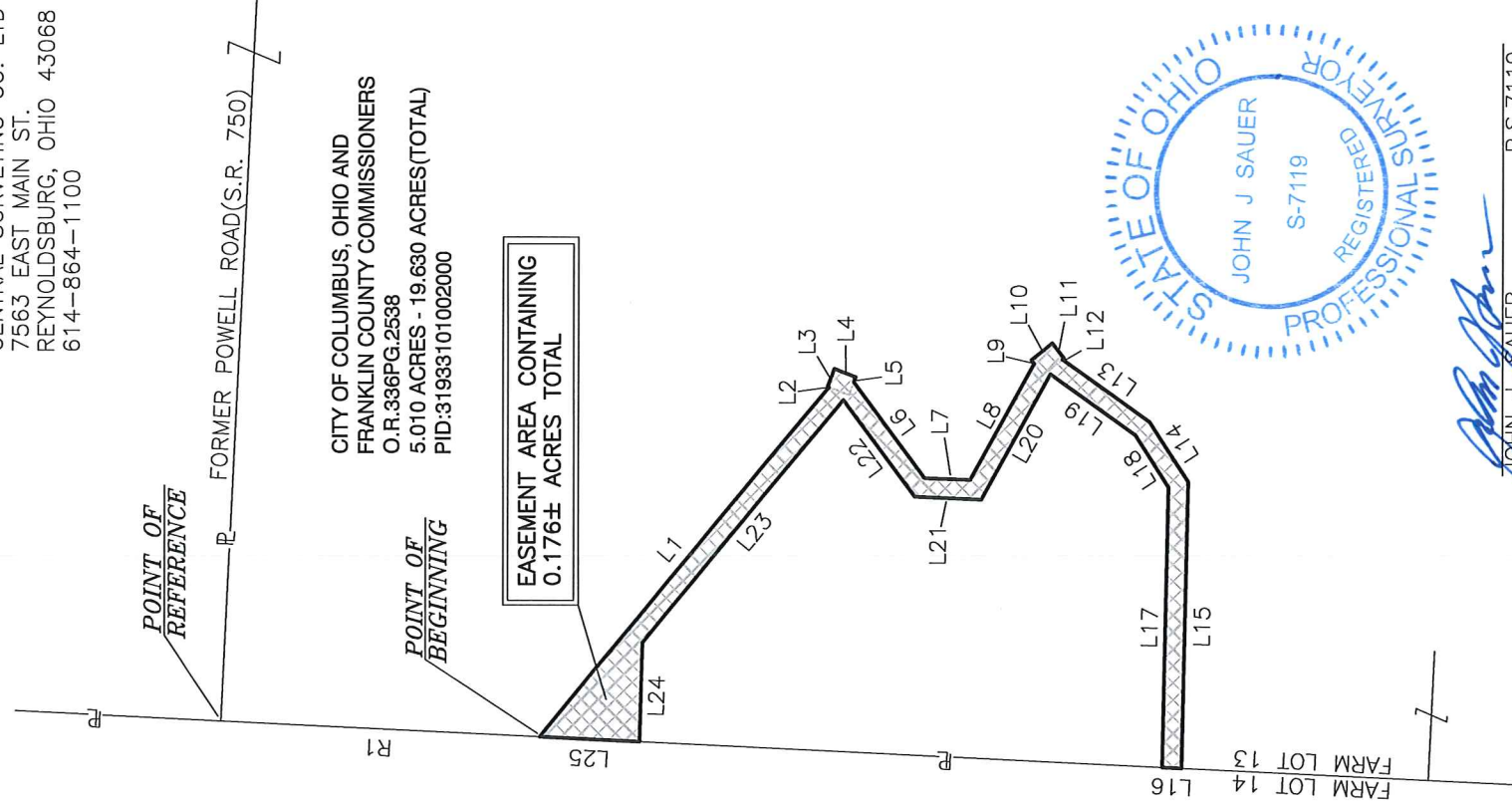
John J. Sauer, P.S. 7119  
Central Surveying Co., Ltd.  
7563 East Main Street  
Reynoldsburg, OH 43068

# EXHIBIT "B"

EXHIBIT "B" PREPARED BY:  
CENTRAL SURVEYING CO. LTD  
7563 EAST MAIN ST.  
REYNOLDSBURG, OHIO 43068  
614-864-1100

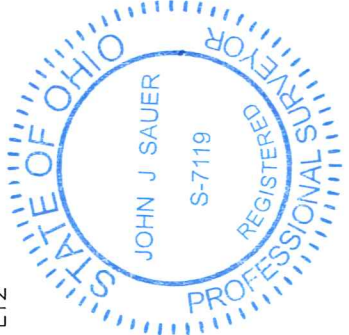
CITY OF COLUMBUS, OHIO  
D.B.248 PG.110  
70.30 ACRES  
PID:31933101003000

CITY OF COLUMBUS, OHIO AND  
FRANKLIN COUNTY COMMISSIONERS  
O.R.336PG.2538  
5.010 ACRES - 19.630 ACRES(TOTAL)  
PID:31933101002000



EASEMENT AREA CONTAINING  
0.176± ACRES TOTAL

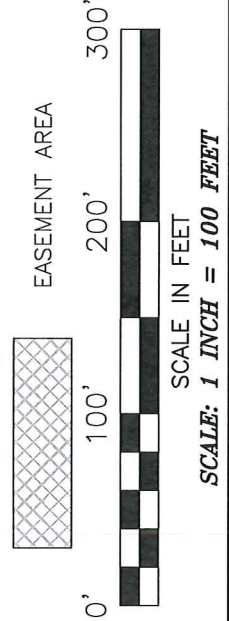
LINE	BEARING	DISTANCE
R1	S 02°46'19" W	167.36'
L1	S 50°28'55" E	237.13'
L2	N 21°02'15" E	0.73'
L3	S 68°57'45" E	10.00'
L4	S 21°02'15" W	12.00'
L5	N 68°57'45" W	2.88'
L6	S 53°23'45" W	62.39'
L7	S 02°22'26" W	23.85'
L8	S 61°09'08" E	69.47'
L9	N 51°29'07" E	2.50'
L10	S 38°30'53" E	14.00'
L11	S 51°29'07" W	10.00'
L12	N 38°30'53" W	1.04'
L13	S 35°35'51" W	56.09'
L14	S 57°13'19" W	37.17'
L15	N 88°44'51" W	149.89'
L16	N 02°46'19" E	10.00'
L17	S 88°44'51" E	146.57'
L18	N 57°13'19" E	32.20'
L19	N 35°35'51" E	54.92'
L20	N 61°09'08" W	74.89'
L21	N 02°22'26" E	34.82'
L22	N 53°23'45" E	63.08'
L23	N 50°28'55" W	164.43'
L24	N 88°26'28" W	51.99'
L26	N 02°46'19" E	52.39'



*John J. Sauer*  
JOHN J. SAUER P.S.7119

**BASIS OF BEARINGS:**  
BEARINGS ARE BASED ON THE OHIO STATE PLANE COORDINATE SYSTEM, NAD 83, OHIO NORTH ZONE.

**SITUATE:**  
SITUATED IN THE STATE OF OHIO, COUNTY OF DELAWARE, TOWNSHIP OF LIBERTY, FARM LOT 13, U.S.M. LANDS, SECTION 3, TOWNSHIP 3, RANGE 19, AND BEING PART OF 19.630 ACRE TRACT OF LAND CONVEYED TO THE CITY OF COLUMBUS, OHIO AND THE FRANKLIN COUNTY COMMISSIONERS AS RECORDED IN OFFICIAL RECORD 336, PAGE 2538, ALL REFERENCES CONTAINED HEREIN ARE TO DELAWARE COUNTY RECORDER'S RECORDS, DELAWARE COUNTY, OHIO.



SCALE: 1 INCH = 100 FEET

**OHIO POWER COMPANY**  
EASEMENT ACROSS THE LANDS OF  
FRANKLIN COUNTY COMMISSIONERS  
AND CITY OF COLUMBUS, OHIO  
CONTAINING 0.176± ACRES

Drawn By: JS	Checked By: WW
Scale: 1"=100'	Date: 11/22/20
File Name: 20-0112-EAS-FCC-COC.DWG	Drawing Number: 2020-0112
Revisions: -	

**NOTES:**  
THIS DRAWING IS FOR EASEMENT PURPOSES ONLY AND HAS BEEN COMPILED USING EXISTING PUBLIC RECORDS ALONG WITH FIELD COLLECTED INFORMATION.