

**MAP
ANNEXATION AN08-009
2.8 Acres in Mifflin Township
S.V. Inc.**

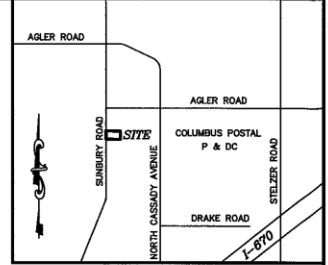
**PROPOSED 2.80 ACRE ANNEXATION FROM MIFFLIN TOWNSHIP
TO THE CITY OF COLUMBUS.**

SITUATED IN THE STATE OF OHIO, COUNTY OF FRANKLIN,
MIFFLIN TOWNSHIP, THIRD QUARTER, TOWNSHIP 1,
RANGE 17, UNITED STATES MILITARY LANDS.

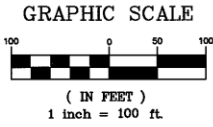
RECEIVED

APR 15 2008

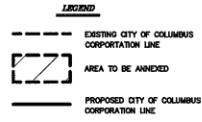
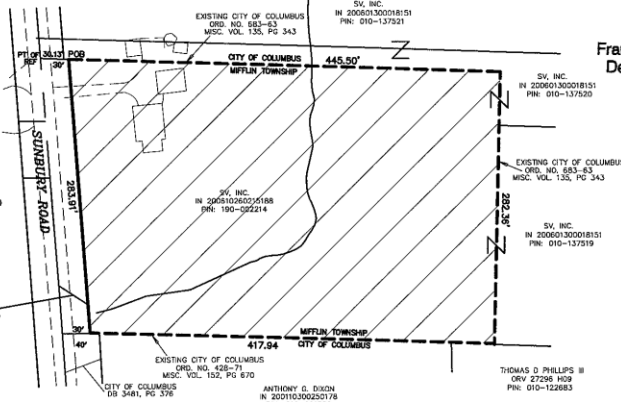
Franklin County Engineer
Dean C. Ringle, P.E., P.S.



VICINITY MAP - NOT TO SCALE



FRANKLIN COUNTY
COMMISSIONERS
IN 20080310048247
0.159, A0953



NOTE: THIS EXHIBIT WAS PREPARED FROM INFORMATION OF RECORD OBTAINED FROM THE FRANKLIN COUNTY'S RECORDER'S OFFICE AND NOT AN ACTUAL FIELD SURVEY.



PREPARED BY:
HOCKADEN AND ASSOCIATES, INC.
Consulting Engineers & Surveyors
688 North Cassady Avenue
Columbus, Ohio 43219
Tele.: (614) 262-0999
Fax: (614) 262-0444

SCALE: 1"=100'

NOTE: TOTAL PERIMETER OF PARCEL=1430.71 LINEAR FEET
PARCEL CONTIGUOUS TO THE CITY OF COLUMBUS=1145.80 LINEAR FEET
PERCENTAGE OF PARCEL CONTIGUOUS TO THE CITY OF COLUMBUS=80 PERCENT

ANNEXATION
PLAT & DESCRIPTION
ACCEPTABLE
DEAN C. RINGLE, P.E., P.S.
FRANKLIN COUNTY ENGINEER
By *FR/DR* Date *4/15/08*



HOCKADEN AND ASSOCIATES, INC.
CONSULTING ENGINEERS & SURVEYORS
By *FR/DR* Date *4/15/08*
FRANK C. LONG P.S. No. 6615