

**City of Columbus RFQ031275**  
**Department of Public Service, Division of Traffic Management**  
**Articulating Telescopic Aerial Device 40 ft.**  
**Detailed Specifications**

- 3.2.2.2           **Equipment / Warranty Service Information:** A description of the equipment/parts provided and type of warranty service that was provided.
- 3.2.3           **Subcontractor Information Required:** If subcontractor(s) are to be used, please list names, addresses, telephone numbers and a contact person for each subcontractor. All subcontracts must have valid contract compliance certification.
- 3.2.3.1           **Subcontractor Contact:** Should the offeror use subcontractors, the City shall use the offeror as the primary contact point.
- 3.2.4           **Specification Questions:** Questions regarding this bid, including any exceptions and/or suggested changes to the requirements, must be submitted on the vendor services portal by 11:00 am (local time) on Monday, October 6, 2025. Responses and any necessary addenda will be posted as an amendment to this RFQ on the City's Vendor Services portal no later than 11:00 a.m. (local time) on Thursday, October 9, 2025. The City strongly encourages bidders to submit exceptions and/or changes during this stage of the process. Bidders submitting exceptions and/or changes before this date will greatly reduce the likelihood of their bid being rejected as non-responsive to the specifications. Bidders who have not registered and created a new user on the City's portal <https://columbusvendorservices.powerappsportals.com/> are strongly encouraged to do so. Notice of any pre-bid notes and addenda will only be sent to Bidders who have registered at the site.
- 3.2.4.1           For further instructions on how to submit "Vendor Questions" through the Vendor Portal, please see Section "Add Vendor Questions" provided in the City of Columbus Vendor Services User Guide.
- 3.2.4.2           The City has instructional videos to assist bidders at the portal. Tutorial videos are available to be viewed through You Tube or by clicking the following link:  
  
[https://www.youtube.com/channel/UCTIkkGNM7GHIITzoqQVNJIA/videos?shelf\\_id=0&view=0&sort=dd](https://www.youtube.com/channel/UCTIkkGNM7GHIITzoqQVNJIA/videos?shelf_id=0&view=0&sort=dd)

SECTION NUMBER	SPECIFICATION DESCRIPTION	DESCRIBE ACTUAL PRODUCT BID
3.3	<b>Specification Information:</b> The equipment shall be a new and unused gas powered aerial lift and utility body should be installed on Ford F550, 4X4 crew, pick up style cab and chassis or City of Columbus approved equal. <b><u>Bidders shall note compliance with the following specifications in the Describe Actual Product Bid column.</u></b> Indicate make, model, year and description of equipment bid. Bidders shall submit a copy of dealers build sheets with bid.	

**City of Columbus RFQ031275**  
**Department of Public Service, Division of Traffic Management**  
**Articulating Telescopic Aerial Device 40 ft.**  
**Detailed Specifications**

SECTION NUMBER	SPECIFICATION DESCRIPTION	DESCRIBE ACTUAL PRODUCT BID
3.3.1	<b>Alternates</b>	
	Bids will be considered on units complying with the specifications. <b>All alternates must be detailed in an attached letter to bid and the Manufacturer and Model clearly identified.</b> Explanations must fully state what is to be furnished. All alternates must exceed specifications. The City of Columbus reserves the right to determine whether any proposed alternates are within the specifications.	
3.3.2	<b>Cab and Chassis</b>	
3.3.2.1	GVWR rating of 19,500 minimum.	19,000 lbs.
3.3.2.2	60" cab-to-axle, or as necessary to fit the configuration of the equipment.	
3.3.2.3	Maximum stowed travel height 150 inches. Suspension, powertrain and wheels/tires can be adjusted accordingly.	
3.3.2.4	7,500 lb. Minimum front axle and springs.	
3.3.2.5	Four-wheel drive with manual locking front hubs.	
3.3.2.6	Power steering.	
3.3.2.7	Front stabilizer bar.	
3.3.2.8	13,000 lb. minimum rear axle, at least 4.30:1 ratio (or as needed for best loaded acceleration and 75 MPH top speed). Limited slip rear axle must be installed, no exceptions.	
3.3.2.9	All-terrain radial tires, all around.	
3.3.2.10	Ford Torq Shift heavy duty with at least a 6-speed automatic transmission with a three plate two stage torque converter or equivalent.	
3.3.2.11	Auxiliary transmission cooler or approved equal.	
3.3.2.12	7.3L 2V DEVCT NA FPI V8 Gas Engine. Shall have minimum 335 HP Shall have a minimum torque of 450 ft. lbs.	
3.3.2.13	Minimum of a 190-amp alternator.	
3.3.2.14	40-gallon after axle rear fuel tank.	
3.3.2.15	Two (2) front tow hooks and two (2) rear tow hooks for a total of four (4) tow hooks. The rear tow hooks will be placed in the prebuild meeting.	
3.3.2.16	Full cab length OEM running boards on both sides.	

**City of Columbus RFQ031275**  
**Department of Public Service, Division of Traffic Management**  
**Articulating Telescopic Aerial Device 40 ft.**  
**Detailed Specifications**

<b>SECTION NUMBER</b>	<b>SPECIFICATION DESCRIPTION</b>	<b>DESCRIBE ACTUAL PRODUCT BID</b>
3.3.2.17	Tilt wheel.	
3.3.2.18	Trailer tow mirrors with convex spot mirror with power/heated glass with integrated clearance lights and turn signal.	
3.3.2.19	Exterior back up alarm. OEM or approved equal.	
3.3.2.20	AM/FM radio.	
3.3.2.21	40/20/40 vinyl seat, with center fold down console that is an inside arm rest and have dual cup holders.	
3.3.2.22	Air conditioning.	
3.3.2.23	Gauge package with tachometer.	
3.3.2.24	Cruise control.	
3.3.2.25	Power windows and door locks.	
3.3.2.26	Height adjustable seat belts for driver and front seat passenger.	
3.3.2.27	An auxiliary power ports (12Vdc) within easy reach of the driver.	
3.3.2.28	All chassis manufacturers factory installed interior panels are to stay in place, none are to be removed or deleted.	
3.3.2.29	Floor mats OEM.	
3.3.2.30	Four (4) complete sets of all keys shall be provided.	
<b>3.3.3</b>	<b>Paint and Rustproofing</b>	
3.3.3.1	Complete chassis and body unit to be primed and painted a matching bright white. Frame painted black.	
3.3.3.2	Care shall be taken during painting process to mask ID plates, part numbers, etc. to preserve their readability.	
3.3.3.3	The body cargo area and tail shelf floors shall be painted with a black abrasive, skid-resistant paint, "Manus Bond" or approved equal.	

**City of Columbus RFQ031275**  
**Department of Public Service, Division of Traffic Management**  
**Articulating Telescopic Aerial Device 40 ft.**  
**Detailed Specifications**

SECTION NUMBER	SPECIFICATION DESCRIPTION	DESCRIBE ACTUAL PRODUCT BID
<b>3.3.4</b>	<b>Truck Utility Body</b>	
3.3.4.1	Unless specified, the utility body is to be fully constructed of A60 zinc alloy steel, A60 galvalume steel line utility body or approved equal.	
3.3.4.2	Overall length of utility body is to be a minimum of 108 inches and a body width of at least 96 inches. The central cargo area is to be approximately 54 inches wide, or as necessary to accommodate the aerial lift when in the stowed position	
3.3.4.3	Tail shelf extension is to be a minimum length of 14 inches; any changes must be discussed before the unit is ordered with the city of Columbus making the final decision. At least a 6-inch-high removable tailboard is to be installed the width of the cargo area ahead of stowed bucket. This is to be variable for boom fitment and overall ride height. Grab handles on right side to assist in entry and egress (left grab handle may be added in prebuild meeting, contingent on placement of cone holder (3.3.4.4).	
3.3.4.4	A cone holder is to be placed at the rear, driver's side of the truck. Exact placement will be decided in the prebuild meeting.	
3.3.4.5	All compartment doors to be double panel steel. All bin compartment doors are to have a single painted or stainless-steel recessed paddle or whale tail handle. Each handle is to have an individual key lock. All locks are to be keyed the same, and 4 copies of the keys are to be supplied with the truck as specified in 3.3.2.30.	
3.3.4.6	A central compartment door locking system on each side of the body.	
3.3.4.7	Drip edges above all compartment doors. All doors to be waterproof sealed with an automotive type rubber seal on all four sides.	
3.3.4.8	Spring loaded or gas shock mechanical door holder on vertical doors. Vinyl coated cable or chain stops on horizontal doors.	
3.3.4.9	Two (2) wheel chocks will be mounted above the rear wheel well, one (1) on each side.	
3.3.4.10	Fender panels, tail shelf skirts, main body components, door hinges, wheel well liners, door latches and outer door panels to be constructed of painted steel to prevent corrosion.	
3.3.4.11	Grip strut on the top of each compartment. Outer top of compartments to be covered with grip strut.	

**City of Columbus RFQ031275**  
**Department of Public Service, Division of Traffic Management**  
**Articulating Telescopic Aerial Device 40 ft.**  
**Detailed Specifications**

SECTION NUMBER	SPECIFICATION DESCRIPTION	DESCRIBE ACTUAL PRODUCT BID
3.3.4.12	Curbside front vertical compartment. A 3-in-high drawer kit on slides, as wide as possible, latched. Dividers on 4-inch centers. Discuss in prebuild meeting.	
3.3.4.13	Curbside middle horizontal compartment. Fixed shelf with removable dividers on 4-inch centers. Discuss in prebuild meeting.	
3.3.4.14	Curbside rear vertical. Fixed shelf with removable dividers on 4-Inch centers. Discuss in prebuild meeting.	
3.3.4.15	Street side front vertical compartment. Fixed shelf with removable dividers on 4-inch centers. Discuss in prebuild meeting.	
3.3.4.16	Street side middle horizontal compartment. Fixed shelf with removable dividers on 4-inch centers. Discuss in prebuild meeting.	
3.3.4.17	Street side rear vertical compartment. Adjustable shelf with removable dividers on 4-inch centers. Discuss in prebuild meeting.	
3.3.4.18	At least 36-inch L steel tail shelf, width to match body.	
3.3.4.19	3-inch fixed steel retaining rail on sides and rear of tail shelf with corner wash-out.	
3.3.4.20	Steel recessed Gripstrut side access steps on curbside of tail shelf.	
3.3.4.21	Headache rack covering the entire rear window.	
3.3.4.22	Cargo bay compartment to have material rails mounted in the interior of the cargo area, on the driver's side. The exact placement to be determined at the pre-build meeting.	
<b>3.3.5</b>	<b>Electrical</b>	
3.3.5.1	Compartment lights wired to dash-mounted master switch.	
3.3.5.2	Lights and reflectors per FMVSS 108 (Complete LED).	
3.3.5.3	Strobe beacon, RED, LED, with Brush Guard (Standard) (Tecniq #K10-AAAD-1), Class II-one each side of body.	
3.3.5.4	Six (6) Position strobes, RED, LED, two (2) surface mounted lights in grille, two (2) oval lights on body sides above wheel wells, two (2) round lights at rear, Class II	
3.3.5.5	Strobe lights wired battery hot.	

**City of Columbus RFQ031275**  
**Department of Public Service, Division of Traffic Management**  
**Articulating Telescopic Aerial Device 40 ft.**  
**Detailed Specifications**

SECTION NUMBER	SPECIFICATION DESCRIPTION	DESCRIBE ACTUAL PRODUCT BID
3.3.5.6	Tomar cab mounted light bar 970-6712-0303, no controller needed, or approved equivalent.	
3.3.5.7	Cargo Light, LED, 4 DIA, grommet mounted (Tecniq #T41-WC0T-1). Install on cargo side as high as possible of CS rear vertical. Wired with work lights switch in cab.	
3.3.5.8	Flood light, LED, with rubber housing, 4.75 DIA (Truck-Lite #81260, United Pacific 36671, or approved equal) installed in pintle area or under tail shelf with switch in cab and at rear, also wired to come on in reverse.	
3.3.5.9	Remote spotlight, LED, permanent mount, with wireless dash-mounted controls and programmable wireless remote (Go-Light #20074) Install on CS rear corner.	
3.3.5.10	Upfitter Switches, Ford (Supplied With Chassis).	
3.3.5.11	OEM Ford OEM 2.0kW Pro Power Inverter or 3000-Watt, Pure Sine Wave, 120 VAC (Sensata #12/3000N). Install in street side 1st vertical. Inverter wired ignition hot to switch mounted in chassis cab or OEM.	
3.3.5.12	Electrical Receptacle, 12 Volt (Cigarette Lighter Style), Weatherproof. Install on front wall of SS horizontal. Wired ignition hot.	
3.3.5.13	Electrical Receptacle, 120 Volt, GFCI, includes weather-resistant enclosure. One in cab. One in each vertical at front top corner excluding 1st vertical SS.	
3.3.5.14	PTO indicator light, installed in cab.	
3.3.5.15	Ford OEM back up camera or approved equal.	
<b>3.3.6</b>	<b>AERIAL LIFT</b>	
3.3.6.1	Aerial lift to be Altec AT-40G series insulated articulating, telescopic boom, or approved equal. Boom shall meet ANSI category C voltages up to 46 KV. Or approved equivalent.	VERSALIFT SST40E1H
3.3.6.2	Aerial Lift to have a multi-section boom. The entire length of the boom and the operating platform is to be contained within the length of the vehicle when stowed in the travel position.	
3.3.6.3	The boom is to provide for a working height of at least 45 feet.	



**City of Columbus RFQ031275**  
**Department of Public Service, Division of Traffic Management**  
**Articulating Telescopic Aerial Device 40 ft.**  
**Detailed Specifications**

SECTION NUMBER	SPECIFICATION DESCRIPTION	DESCRIBE ACTUAL PRODUCT BID
3.3.6.4	The boom is to provide for a minimum horizontal working extension of at least 28 feet from the centerline of the truck from side to side.	27'-9"
3.3.6.5	Boom rotation to be 360 degrees continuous and unrestricted. A shear ball bearing turntable and a gearbox containing a worm and spur gear drive system is to be used.	
3.3.6.6	All cylinders to be equipped with integral check valves or holding valves.	
3.3.6.7	A shock absorbing boom cradle with storage support, located at the street side, rear of the cargo area, and have a 3-sided cushion without a tie down strap.	
3.3.6.8	PTO or electric driven pump assembly, with interlock hydraulic pump system providing a minimum operational flow of three (3) gallons per minute.	
3.3.6.9	The reservoir to be internalized and equipped with a sight gauge, shut-off valves and filters.	
3.3.6.10	A minimum of a (7) gallon fluid reservoir to supply operation for the entire boom. This reservoir is to be constructed of heavy gauge steel or fully protected by a heavy gauge steel plate. This steel plate is not to impede, in any way, any sight gauges or filling of tank. All exposed hydraulic hoses are to be protected by a heavy gauge steel plate.	
3.3.6.11	Master controls for all boom and bucket functions are to be located at the pedestal and be able to override all of the hydraulic controls located at the platform.	
3.3.6.12	Externally adjustable wear pads shall be utilized for telescoping boom.	
3.3.6.13	Individual controls at the platform for platform rotation, and platform leveling.	
3.3.6.14	An emergency shut off valve at the platform.	
3.3.6.15	The INSULATING UPPER CONTROL SYSTEM includes a single handle controller incorporating high electrical resistance components that is dielectrically tested to 40 kV AC with no more than 400 microampers of leakage. The control handle is green in color to differentiate it from other non-tested controllers.	VERSALIFT TRUGUARD SILVER IN COLOR
3.3.6.16	Insulated engine stop/start system with switches at platform and lower controls.	

**City of Columbus RFQ031275**  
**Department of Public Service, Division of Traffic Management**  
**Articulating Telescopic Aerial Device 40 ft.**  
**Detailed Specifications**

SECTION NUMBER	SPECIFICATION DESCRIPTION	DESCRIBE ACTUAL PRODUCT BID
3.3.6.17	Individual controls at the platform for platform rotation and platform leveling.	
3.3.6.18	An emergency shut off valve at the platform.	
3.3.6.19	There should be one (1) safety harness attachment point for the platform.	
3.3.6.20	The platform is to have a dump system for clean out and rescue. This dump system is to be operable from inside the bucket and at the pedestal.	
3.3.6.21	An insulated 12-volt emergency power system with switches at both the platform and lower controls, this will allow full functionality of all controls. This is to be fully protected by a heavy gauge steel plate.	
3.3.6.22	All controls for platform operation and boom operation are to be available from inside of platform and at the pedestal while standing inside of the utility bed.	
3.3.6.23	The platform is to be capable of supporting 400 pounds with torsion bars and/or counterweight if applicable. Must keep inside rear dual on ground.	
3.3.6.24	Single 24 x 30 x 42 in one (1) man, fiberglass walk-in platform with door, or approved equal.	CLOSED PLATFORM
3.3.6.25	The platform is to be end hung only.	
3.3.6.26	The platform is to rotate 180 degrees around the tip of the boom. These controls are to be insulated and operated from inside the bucket and at the pedestal.	
3.3.6.27	The platform is to have a leveling system that will keep the floor of the platform level with the ground. Controls for this leveling system are to be located at both the upper and lower control stations.	
3.3.6.28	The height of the completed unit is not to exceed 12 foot and 4 inches when the unit is in the travel position.	
3.3.6.29	One (1) weatherproof cover for the platform.	
3.3.6.30	The platform is to stow as low as possible. There is to be a flexible rubber platform support located under the platform. There shall be a clear pathway to entering the bucket.	



**City of Columbus RFQ031275**  
**Department of Public Service, Division of Traffic Management**  
**Articulating Telescopic Aerial Device 40 ft.**  
**Detailed Specifications**

SECTION NUMBER	SPECIFICATION DESCRIPTION	DESCRIBE ACTUAL PRODUCT BID
3.3.6.31	Outriggers in addition to the torsion bars, these are to be at the sole discretion of the operator of whether or not to be used. No interlock system is to be installed. They will at no point extend outside of the footprint of the utility body (straight down outriggers are preferred). These are not to intrude into or only intrude slightly as to not take away from the bin compartments installed in the utility bed. Any intrusions must be approved by Division.	
<b>3.4</b>	<b>Training</b>	
3.4.1	Manufacturer shall provide a training program that covers the unit's safe operational instruction and routine maintenance procedures. The training program shall be for a minimum of (1) one working day for the operators of the machine and minimum (1) one working day for Fleet Services personnel. Training will take place at locations determined by the City.	
<b>3.5</b>	<b>MEETING</b>	
3.5.1	Pre-Build Meeting: There shall be a mandatory pre-build meeting to be held no less than two weeks prior to the fitting of the body to the cab and chassis. The meeting will be held at 1820 E. 17 <sup>th</sup> Ave., Columbus, Ohio, 43219. Virtual participation is permitted.	

**4.0 SAMPLING, INSPECTION AND TEST PROCEDURES**

- 4.1 **Demonstration:** The City reserves the right to require a demonstration of any equipment prior to award of the bid. Such demonstration shall be conducted, at the sole discretion of the City, either on roads in the City of Columbus, or in another municipal setting in Franklin County, Ohio where such equipment is in daily operation. All costs associated with such demonstration are to be the responsibility of the supplier. All demonstrations shall be concluded within five (5) working days after notification of demo request. Failure to comply may be used as a basis for rejection of the bid.
- 4.2 **Inspection:** All parts shall be thoroughly physically inspected upon delivery by an authorized representative of the Division Infrastructure Management for verification of conformance to the specifications. Any damaged, defective, or substandard item shall be promptly removed by the supplier and replaced at no cost to the City of Columbus. The supplier will be responsible for all shipping costs.
- 4.3 **Testing:** The City reserves the right to conduct testing on supplies provided by the ensuing contract before acceptance for specification compliance at any time during the

**City of Columbus RFQ031275**  
**Department of Public Service, Division of Traffic Management**  
**Articulating Telescopic Aerial Device 40 ft.**  
**Detailed Specifications**

**REFERENCES**

The bidder must briefly document its capabilities and submit an outline of its experience and work history in the supply and delivery of insulated aerial bucket 4X4 trucks with Crew Cab and Chassis minimum G.V.W. rating of 19,500 pounds equipped with utility body and warranty service for the past five years by submitting the contact information of professional references from four (4) separate contracts. References should consist of projects of a similar scope, complexity, and cost.

Business Name: STROUD TOWNSHIP Tel #: (570) 421 - 3362

Address: 1211 NORTH 5<sup>TH</sup> ST., STROUDSBURG, PA 18360

E-mail: \_\_\_\_\_ Fax #: ( ) - \_\_\_\_\_

Contact: \_\_\_\_\_ Equipment purchase date: 5/6/2025

Equipment Provided/ Warranty Service Performed:

PROVIDED A VERSALIFT SST40EIH UNIT.

\_\_\_\_\_

\_\_\_\_\_

\_\_\_\_\_

\_\_\_\_\_

Business Name: CITY OF PHILADELPHIA Tel #: (215) 686 - 1776

Address: 4060 MONTGOMERY DRIVE, PHILADELPHIA, PA 19131

E-mail: \_\_\_\_\_ Fax #: ( ) - \_\_\_\_\_

Contact: \_\_\_\_\_ Equipment purchase date: 11/7/2024

Equipment Provided/ Warranty Service Performed:

PROVIDED TWO VERSALIFT SST40EIH UNITS.

\_\_\_\_\_

\_\_\_\_\_

\_\_\_\_\_

\_\_\_\_\_

**City of Columbus RFQ031275**  
**Department of Public Service, Division of Traffic Management**  
**Articulating Telescopic Aerial Device 40 ft.**  
**Detailed Specifications**

**REFERENCES (continued)**

Business Name: BALTIMORE COUNTY PUBLIC SCHOOLS Tel #: (410) 887 - 0742

Address: 6901 NORTH CHARLES, TOWSON, MD 21204

E-mail: bcps.org Fax #: ( ) -

Contact: ANDY VOLZ Equipment purchase date: 10/28/2024

Equipment Provided/ Warranty Service Performed:

PROVIDED A VERSALIFT SST40EIH UNIT.

\_\_\_\_\_

\_\_\_\_\_

\_\_\_\_\_

\_\_\_\_\_

\_\_\_\_\_

Business Name: WEST HAZELTON BORO Tel #: (570) 578 - 0062

Address: 124 EAST BOARD ST., HAZELTON, PA 18202

E-mail: \_\_\_\_\_ Fax #: ( ) -

Contact: \_\_\_\_\_ Equipment purchase date: 8/19/2024

Equipment Provided/ Warranty Service Performed:

PROVIDED A VERSALIFT SST40EIH UNIT.

\_\_\_\_\_

\_\_\_\_\_

\_\_\_\_\_

\_\_\_\_\_

\_\_\_\_\_

## **ABOUT VERSALIFT**

Versalift is engineered to lift you higher. A Time Manufacturing Company based in Waco, Texas, Versalift has been designing and building vehicle-mounted aerial lifts since 1965. As an ISO-9001:2015 certified manufacturer, we deliver bucket trucks, digger derricks, cable placers, and specialized equipment to utilities, telecommunications, lighting and signage, forestry, wind energy, and other industries worldwide.

With more than 2,100 employees and a global network of distributors, Versalift is trusted by cooperatives, municipalities, government agencies, and corporations. Our lifts are known for their safety, reliability, and long service life—helping customers work efficiently and with confidence.

Innovation is at the heart of our history, from pioneering hydraulic systems to advanced safety solutions like the TruGuard® safety system. Every unit is built to the highest standards of quality, ensuring dependable performance from day one.

Since 2006, Versalift East in Bethlehem, PA operates from a modern, 56,000 sq. ft. state-of-the-art production and service facility designed and constructed expressly for producing and servicing electric utility, telecommunications, contractor and municipal vehicles.

Our expert staff of engineers, factory-certified technicians and a knowledgeable customer service team assures you get the right equipment and the best solutions for virtually any application. Calling on decades of industry experience, we will help you design, specify and purchase new equipment and customize it to fit your application.

Versalift East Ohio Service Center  
4821 Corporate St SW  
Canton, OH 44706

# SST-37/40-EIH

*Insulated Lightweight Workhorse*

- **WORKING HEIGHT:** Up to 45 ft (13.7 m)  
with Standard Pedestal
- **HORIZONTAL REACH:** Up to 27 ft 9 in (8.5 m)
- **PLATFORM CAPACITY:** Up to 450 lbs (204 kg)

**FULL  
PRESSURE  
HYDRAULIC  
CONTROLS**

**BEST  
IN CLASS  
PAYLOAD**



SST-40-EIH model shown here.

**VERSALIFT®**



# SST-37/40-EIH

Insulated Lightweight Workhorse



## GENERAL SPECIFICATIONS:

(Based on 40 in Frame)

Horizontal Reach 27 ft 9 in (8.5 m)

Maximum Platform Capacity 450 lbs (204 kg)

## WITH STANDARD PEDESTAL:

Height to Bottom of Platform

SST-37-EIH 37 ft (11.3 m)

SST-40-EIH 40 ft (12.2 m)

Working Height

SST-37-EIH 42 ft (12.8 m)

SST-40-EIH 45 ft (13.7 m)

Stowed Travel Height

10 ft 4 in (3.15 m)

## INSULATION GAP:

Upper Boom Fully Retracted 42 in (1.07 m)

Lower Boom Insert (optional) 12 in (0.3 m)

Upper Boom Fully Retracted 10 in (.25 m)

(w/o Electrogard)

## HYDRAULIC SYSTEM:

Operating Pressure 2250 psi (155 bar)

Flow Rate 5 gpm (18.9 lpm)

System Type Open Center

## BOOM ACTION:

Inner Boom Extension 116 in (2.9 m)

Outer Boom -14° to +74°

Lower Boom

SST-37-EIH -7° to Vertical

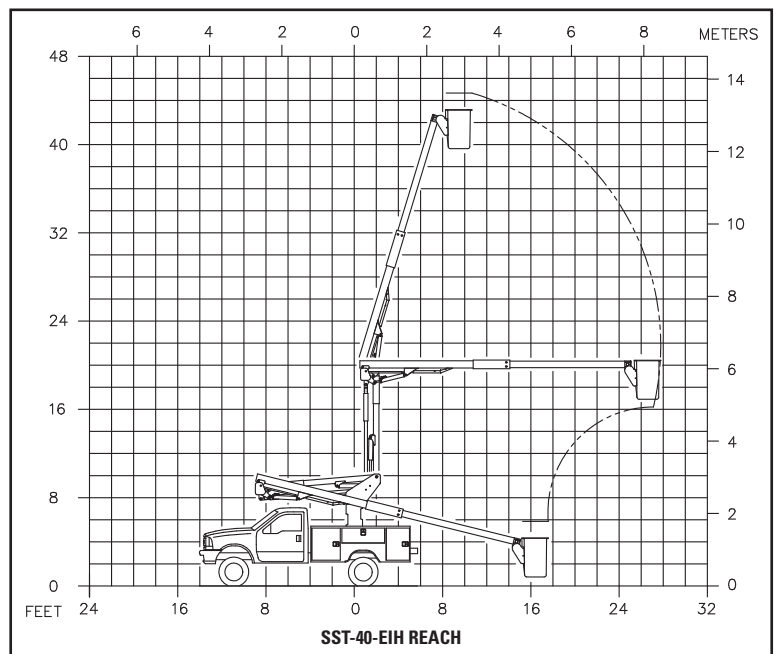
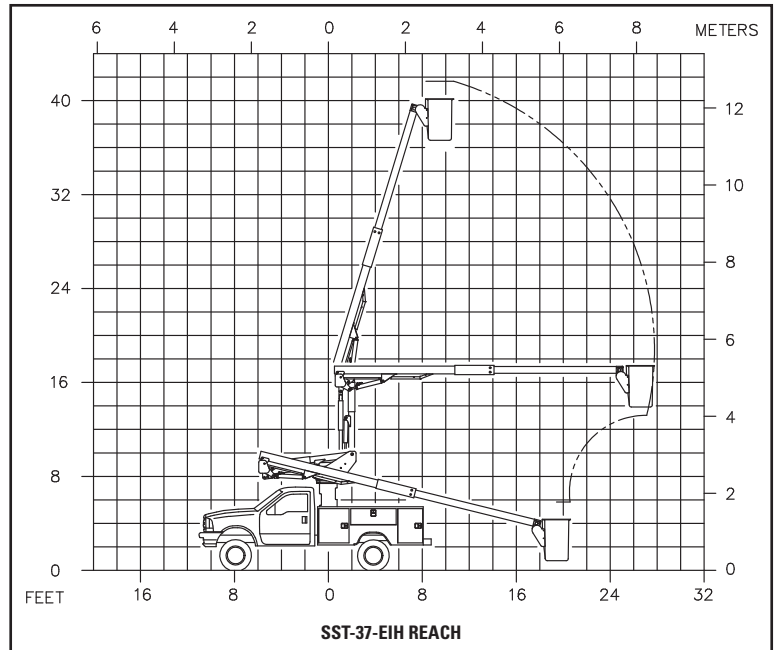
SST-40-EIH -5° to Vertical

Rotation

370° Non-Continuous

## OPTIONS:

- 4-Axis Controller
- Continuous Rotation
- Rear Torsion Bars
- Independent Outriggers
- Backup 12-Volt Pump
- Engine Throttle Control
- Lift Eye (500 lb max)
- Automatic Boom Latch
- 180° Rotating Platform
- Hydraulic Tool Circuit at the Platform



Note: Specifications on units may vary or change without prior notification due to option selections.

REV. 03/20

**VERSALIFT** is a leading manufacturer of bucket trucks, digger derricks and cable placers. Customers in the electric utility, telecommunications, forestry and sign, light & traffic industries experience a lower true cost of ownership by choosing Versalift. Our equipment is engineered to be lighter, while keeping the designs simple, which provides advantages like less unscheduled maintenance, greater payloads and ease of maintenance. Versalift has the lowest recall rate in the industry making it the smarter and most reliable choice. Versalift aerial lifts are the only units to feature the patented TruGuard® safety system, which provides additional protection to linemen in the bucket. Versalift is a Time Manufacturing Company, and together with Aspen Aerials has more than 1,400 employees worldwide.





## OWNER'S WARRANTY

The **Versalift** Aerial Platform Lift is engineered and designed to perform as stated on published specifications. Only quality material and workmanship are used in the manufacture of this product. With proper installation, regular maintenance, and periodic repair service, the equipment will provide excellent service.

Those parts of the **Versalift** that are manufactured by **Time Manufacturing Company** are warranted for one full year from date of purchase. Structural components will carry a lifetime warranty for defects in material and workmanship which existed at the time of initial delivery, wear components are not covered by this statement. This warranty is issued only to the original purchaser and promises that **Time Manufacturing Company** manufactured products are free from defects in material and factory workmanship when properly installed, serviced, and operated under normal conditions, according to the manufacturer's instructions.

Manufacturer's obligation under this warranty is limited to correcting without charge at its factory any part or parts thereof which shall be returned to its factory or one of its Authorized Service Stations, transportation charges prepaid, within one year after being put into service by the original user, and which upon examination shall disclose to the Manufacturer's satisfaction to have been originally defective. Correction of such defects by repair to, or supplying of replacements for defective parts, shall constitute fulfillment of all obligations to original user.

This warranty shall not apply to any of the Manufacturer's products which must be replaced because of normal wear, which have been subject to misuses, negligence or accident, or which shall have been repaired or altered outside of the Manufacturer's factory (unless authorized by the Manufacturer in writing), products which have not been maintained and operated in accordance with Time Manufacturing Company's operators, maintenance manuals and bulletins, products which are repaired without using original Time Manufacturing Company parts. This limited warranty does not cover transportation fees and/or consumables used for the repair.

Manufacturer shall not be liable for loss, damage, or expense directly or indirectly from the use of its product or from any cause.

The above warranty supersedes and is in lieu of all other warranties, expressed or implied, and of all other liabilities or obligations on part of Manufacturer. No person, agent, or dealer is authorized to give any warranties on behalf of the Manufacturer or to assume for the Manufacturer any other liability in connection with any of its products unless made in writing and signed by an officer of the Manufacturer.





## **CLARIFICATIONS TO THE CITY OF COLUMBUS RFQ031275**

Section 3.3.2.1: The chassis GVWR will be 19,000 lbs. since a gasoline engine was requested in section 3.3.2.12. To achieve the 19,500 lb. GVWR a diesel engine is required. Please add \$12,635.00 to the overall price.

Section 3.3.6.1: The aerial device will be a Versalift SST40EIH unit.

Section 3.3.6.4: The horizontal reach will be 27'-9".

Section 3.3.6.15: The Versalift TruGuard system will be offered and the control handle will be silver in color.

Section 3.3.6.24: A closed platform with 50kV bucket liner will be offered on the SST40EIH unit.



# TruGuard

PATENTED TECHNOLOGY

## No matter if you're in the bucket or on the ground, Safety for you and your AERIAL OPERATORS is a TOP PRIORITY.

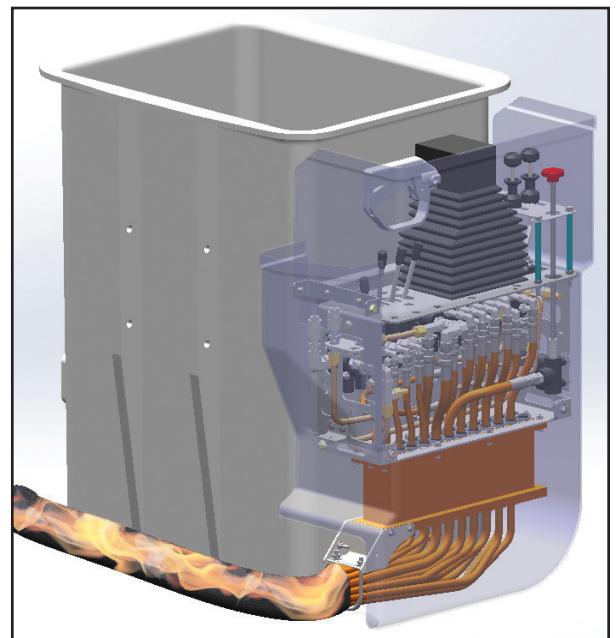
With operators or lift boom tips easily coming into contact with electrical phases through the upper controls, severe injury and/or death is not only possible, but a safety risk you cannot afford in the lives of your operators and your business. In the past, lift companies have offered a solution of plastic handles for the protection of the upper controls.

However, these handles still provide only limited safety with dirt and grime contamination, breakage and frequent repair, and incomplete electrical blockage.

### OUR SOLUTION

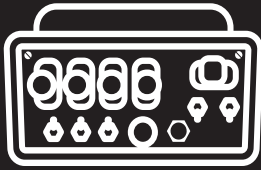
At VERSALIFT, we believe you deserve safety that you can count on when faced with your job's everyday situations. Which is why our world-class engineers created TruGuard® technology, a complete upper control isolating system.

TruGuard® is a "true guard" protection against phase-to-phase and phase-to-ground electrical contact when in an aerial lift, all the way from the boom tip and jib to the ground contact.



**TruGuard**  
PATENTED TECHNOLOGY





## HYDRAULIC

Offers full hydraulic controls that are mechanic-friendly, operator-preferred, and last for 30+ years.



## ISOLATION GAP

Protects all control handles at the upper control, hydraulic tool power ports, and console area.



## DEBRIS RESISTANCE

Easily passes ANSI A92.2 and protects surfaces from road grime and environmental contamination.

## WHY IS TRUGUARD® DIFFERENT?

With TruGuard®, you are able to offer your lift operators unprecedented security and safety while working near electrical phases.

Our world-class engineers have created a uniquely engineered polymer with high dielectric properties and ultra high strength. By isolating the entire area, TruGuard® is the only true upper control safety panel that protects all control handles at the upper control, as well as hydraulic tool power ports, and the console area itself. Giving you the power you want when operating your lift, TruGuard®'s full hydraulic controls with durable metal handles are long lasting and preferred both by mechanics and operators. TruGuard® passes ANSI A92.2 by resisting the dirt and grime you'll encounter throughout the life of your lift, giving you greater security. We've tested it in every challenging situation you'll ever face on the job, along with high pressure and extreme temperatures—and it's exceeded all expectations, including ours. We know it will exceed yours, too.

## YOUR TURN

Safety and security for you and your lift operators when working with high phase electrical currents is possible. Interested in hearing more about TruGuard® or how to add it to your lift? Contact one of our knowledgeable VERSALIFT distributors today.



*Note: Specifications on units may vary or change without prior notification due to option selections.*

REV. 09/19

**VERSALIFT** is a leading manufacturer of bucket trucks, digger derricks and cable placers. Customers in the electric utility, telecommunications, forestry and sign, light & traffic industries experience a lower true cost of ownership by choosing Versalift. Our equipment is engineered to be lighter, while keeping the designs simple, which provides advantages like less unscheduled maintenance, greater payloads and ease of maintenance. Versalift has the lowest recall rate in the industry making it the smarter and most reliable choice. Versalift aerial lifts are the only units to feature the patented TruGuard® safety system, which provides additional protection to linemen in the bucket. Versalift is a Time Manufacturing Company, and together with Aspen Aerials has more than 1,000 employees worldwide.