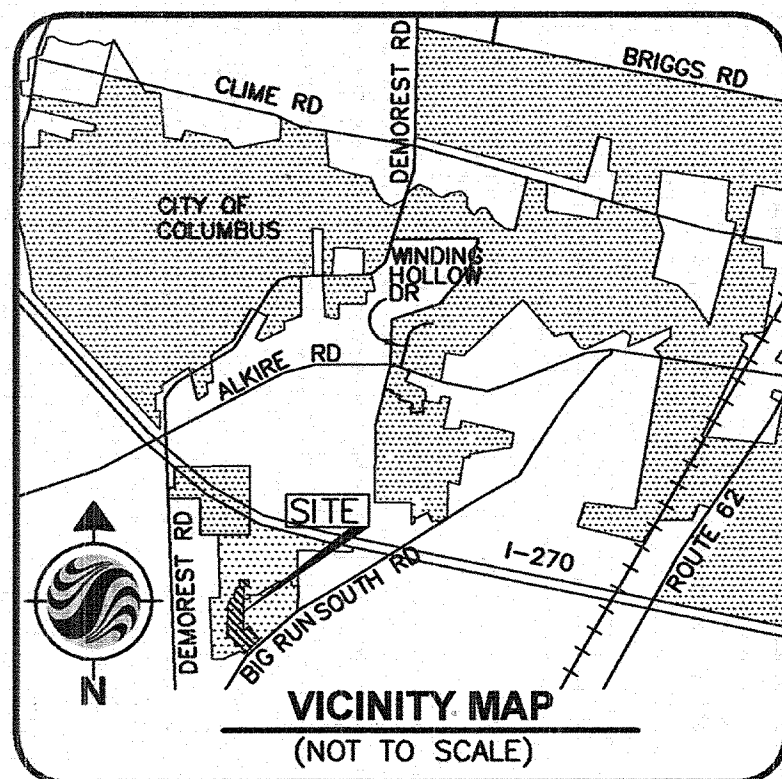


BIG RUN RIDGE

SECTION 2 PART 1



ZONING NOTICE:
 AT THE TIME THIS PLAT IS RECORDED, THE LAND INDICATED HEREON IS SUBJECT TO REQUIREMENTS OF THE CITY OF COLUMBUS ZONING ORDINANCE 0459-03, PASSED APRIL 7, 2003 (Z02-073). THIS ORDINANCE, AND ANY AMENDMENTS THERETO PASSED SUBSEQUENT TO ACCEPTANCE OF THIS PLAT, SHOULD BE REVIEWED TO DETERMINE THE THEN CURRENT AND APPLICABLE USE AND DEVELOPMENT LIMITATIONS OR REQUIREMENTS. THIS NOTICE IS SOLELY FOR THE PURPOSE OF NOTIFYING THE PUBLIC OF THE EXISTENCE, AT THE TIME THIS PLAT IS RECORDED, OF ZONING REGULATIONS APPLICABLE TO THIS PROPERTY. THIS NOTICE SHALL NOT BE INTERPRETED AS CREATING PLAT OR SUBDIVISION RESTRICTIONS WITH THE LAND OR TITLE ENCUMBRANCES OF ANY NATURE, AND IS FOR INFORMATION PURPOSES ONLY.

FLOOD PLAIN:
 THE SUBJECT PROPERTY LIES IN ZONE X, AREA DETERMINED TO BE OUTSIDE THE 0.2% CHANCE ANNUAL FLOODPLAIN AS DETERMINED BY GRAPHIC INTERPOLATION FROM THE FLOOD INSURANCE RATE MAP (FIRM), FOR FRANKLIN COUNTY, OHIO AND INCORPORATED AREAS, MAP NUMBER 39049C0313 K, WITH AN EFFECTIVE DATE OF JUNE 17, 2008, PUBLISHED BY THE FEDERAL EMERGENCY MANAGEMENT AGENCY.

WETLANDS:
 NO DETERMINATION HAS BEEN MADE BY THE DEPARTMENT OF BUILDING AND ZONING SERVICES, CITY OF COLUMBUS AS TO WHETHER THE AREA PROPOSED TO BE PLATTED CONTAINS AREA(S) THAT COULD BE CLASSIFIED AS WETLANDS BY THE ARMY CORPS OF ENGINEERS. IT IS THE DEVELOPER'S RESPONSIBILITY TO DETERMINE WHETHER WETLANDS EXIST ON THE SITE. CITY OF COLUMBUS APPROVAL OF THE PLAT OF THE BIG RUN RIDGE, SECTION 2, PART 1 DOES NOT IMPLY ANY APPROVAL FOR THE DEVELOPMENT OF THE SITE AS IT MAY PERTAIN TO WETLANDS.

DEPRESSED DRIVEWAYS:
 THE PAVEMENT AND STORM SEWER PLAN TOGETHER WITH THE MASTER GRADING PLAN FOR BIG RUN RIDGE, SECTION 2, PART 1 SHOW A DESIGN THAT WOULD PROHIBIT LOTS 94 THROUGH 129 FROM HAVING A DEPRESSED DRIVEWAY ACCORDING TO COLUMBUS CITY CODE SECTION 4123.43 UNLESS OTHERWISE APPROVED BY THE COLUMBUS BUILDING INSPECTOR.

STORM WATER CONTROL:
 SAID STORM WATER CONTROL FACILITIES ARE TO BE MAINTAINED, INSPECTED AND INSPECTION RECORDS LOGGED IN ACCORDANCE WITH THE CITY OF COLUMBUS DIVISION OF SEWERAGE AND DRAINAGE STORMWATER DRAINAGE MANUAL. SPECIFIC MAINTENANCE ACTIONS FOR THE STORM DRAINAGE BPM'S (RETENTION BASIN IN RESERVE A) CAN BE FOUND IN THE GRADING AND STORM SEWER PLAN, DR.D-4427. THESE RESPONSIBILITIES CONTINUE WITH ALL FUTURE OWNERS OF SAID PRIVATE STORM SEWER SYSTEM.

PLANS:
 SEE CC-13547 AND DR.D-4435

OWNER AND SUBDIVIDER:
 DOMINION HOMES, INC.
 AN OHIO CORPORATION

SCHOOL DISTRICT:
 COLUMBUS CITY SCHOOL DISTRICT

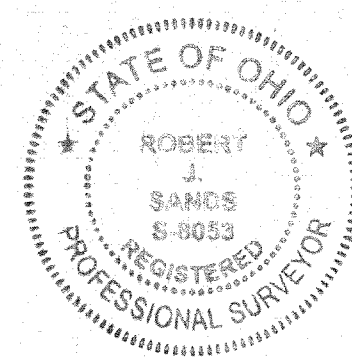
BASIS OF BEARINGS:
 THE BEARINGS SHOWN HEREON ARE BASED ON THE BEARING OF N 45°38'51" E, FOR THE CENTERLINE OF BIG RUN SOUTH ROAD, AS ESTABLISHED BY A NETWORK OF GPS OBSERVATIONS PERFORMED IN JANUARY 2003, USING FRANKLIN COUNTY ENGINEERS MONUMENTS "FRANK 35" AND "FRANK 135", OHIO STATE PLANE COORDINATE SYSTEM, SOUTH ZONE, NAD83, 1986 ADJUSTMENT.

CERTIFICATION:
 WE DO HEREBY CERTIFY THAT WE HAVE SURVEYED THE ATTACHED PREMISES, PREPARED THE ATTACHED PLAT, AND THAT SAID PLAT IS CORRECT. ALL DIMENSIONS ARE SHOWN IN FEET AND DECIMAL PARTS THEREOF. MONUMENTATION IS TO BE PLACED UPON COMPLETION OF CONSTRUCTION NECESSARY TO THE IMPROVEMENT OF THIS LAND AND IS INDICATED BY THE FOLLOWING SYMBOLS:

- ⊙ = PERMANENT MARKER SET (SOLID ONE INCH IRON PIN)
- ⊖ = IRON PIPE SET ARE 3/4 INCH IRON PIPES, 30 INCHES IN LENGTH, WITH A YELLOW CAP BEARING THE NAME "STANTEC".
- ⊕ = MAG NAIL SET
- ⊙ = 3/4 INCH IRON PIPE FOUND

STANTEC CONSULTING SERVICES INC.

BY: Robert J. Sands 05/03/11 DATE
 ROBERT J. SANDS
 PROFESSIONAL SURVEYOR NO. S-8053

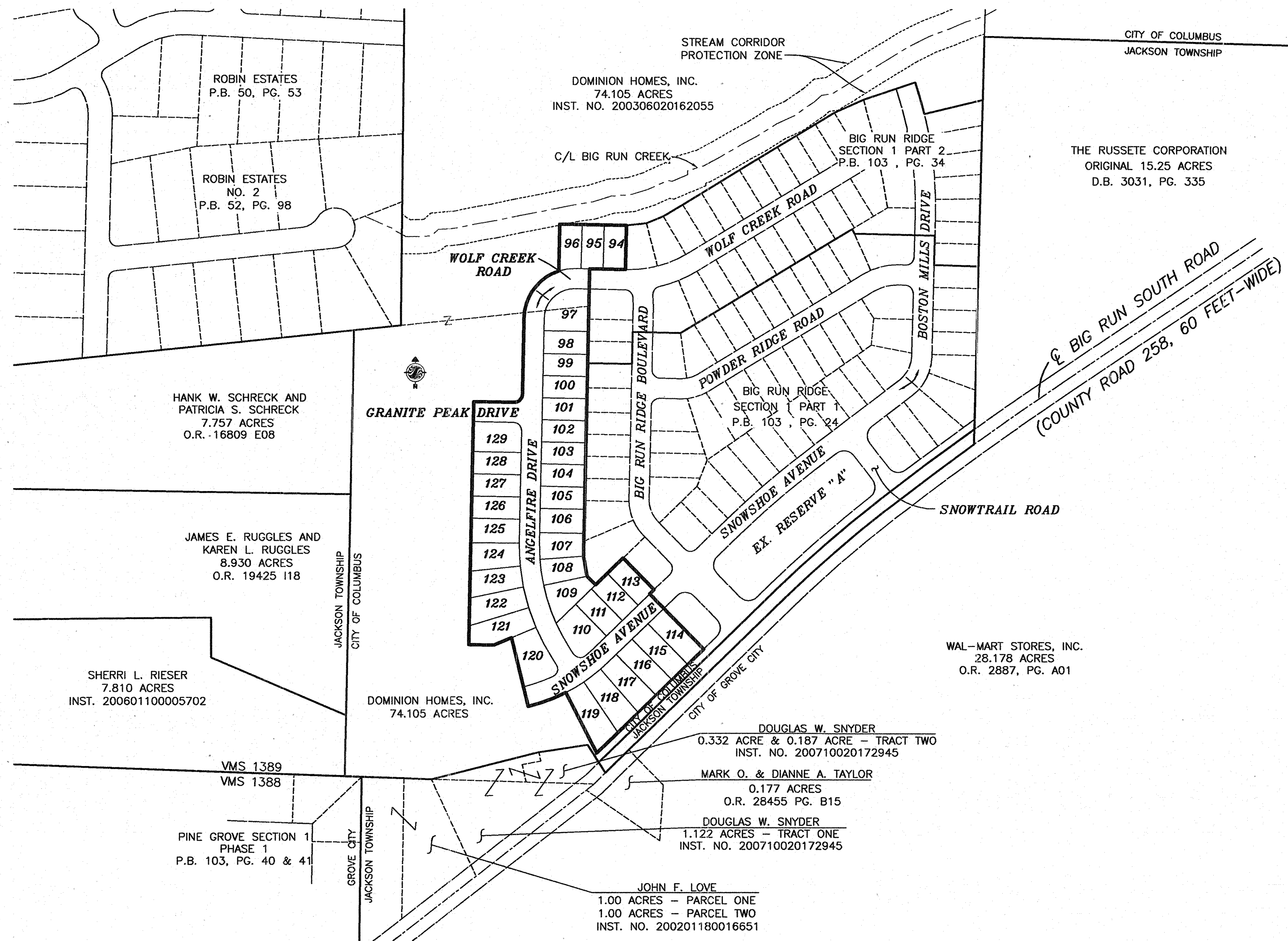


PREPARED BY:

Stantec
 1500 LAKE SHORE DRIVE
 SUITE 100
 COLUMBUS, OHIO 43204
 (614) 486-4383 1-800-340-2743
 FAX (614) 486-4387

Stantec

Copyright Reserved
 The Contractor shall verify and be responsible for all dimensions. Do not scale the drawing. Errors or omissions shall be reported to Stantec without delay.
 The Copyrights to all designs and drawings are the property of Stantec.
 Reproduction or use for any purposes other than that authorized by Stantec is forbidden.



BACKGROUND MAP
 SCALE: 1" = 200'

SITUATE:
 SITUATE IN THE STATE OF OHIO, COUNTY OF FRANKLIN, CITY OF COLUMBUS, LYING IN VIRGINIA MILITARY SURVEY NUMBER 1389, CONTAINING 7.870 ACRES, MORE OR LESS, INCLUDING 1.858 ACRES OF RIGHT-OF-WAY AREA, AND BEING OUT OF THE ORIGINAL 74.105 ACRE TRACT CONVEYED TO DOMINION HOMES, INC., AN OHIO CORPORATION, BY DEED OF RECORD IN INSTRUMENT NUMBER 200306020162055, RECORDS OF THE RECORDER'S OFFICE, FRANKLIN COUNTY, OHIO.

EASEMENTS:
 EASEMENTS ARE HEREBY RESERVED IN, OVER AND UNDER AREAS DESIGNATED ON THIS PLAT AS "EASEMENT", FOR THE CONSTRUCTION, OPERATION AND MAINTENANCE OF ALL PUBLIC AND QUASI PUBLIC UTILITIES, ABOVE AND BENEATH THE SURFACE OF THE GROUND, AND WHERE NECESSARY FOR THE CONSTRUCTION, OPERATION, AND MAINTENANCE OF SERVICE CONNECTIONS TO ALL ADJACENT LOTS AND LANDS, AND FOR STORM WATER DRAINAGE. FURTHERMORE, IN ACCORDANCE WITH THE TERMS AND REGULATIONS OF SECTION 3123.08(C) (8) OF THE COLUMBUS CITY CODES, 1959, THERE IS HEREBY OFFERED AN EASEMENT TO THE CABLE T.V. INDUSTRY FOR THE INSTALLATION, OPERATION AND MAINTENANCE OF T.V. CABLE AND EQUIPMENT.

THE EASEMENTS SHOWN HEREON OUTSIDE THE PLATTED AREA ARE WITHIN THOSE TRACTS OF LAND OWNED BY DOMINION HOMES, INC., AN OHIO CORPORATION, AND ARE DEDICATED FOR THE USES AND PURPOSES STATED IN THE PRECEDING EASEMENTS PARAGRAPH.

OWNER/SUBDIVIDER CERTIFICATION:
 DOMINION HOMES, INC., AN OHIO CORPORATION, BEING THE OWNER OF THE LAND PLATTED HEREIN, DOES HEREBY CERTIFY THAT THIS PLAT CORRECTLY REPRESENTS ITS "BIG RUN RIDGE SECTION 2 PART 1," A SUBDIVISION OF LOTS NUMBERED 94 THROUGH 129, INCLUSIVE, AND DOES HEREBY ACCEPT THIS PLAT OF SAME AND DEDICATES TO PUBLIC USE, AS SUCH, ALL OR PARTS OF THE DRIVES, ROAD AND AVENUE SHOWN HEREON AND NOT HERETOFORE DEDICATED.

GRANTOR, BEING THE DEVELOPER DEDICATING THE PROPERTY DESCRIBED IN THIS PLAT, HEREBY AGREES THAT GRANTOR WILL INDEMNIFY THE CITY OF COLUMBUS FOR AND HOLD IT HARMLESS FROM ANY AGRICULTURAL RECUMPTMENTS ASSESSED OR LEVIED IN THE FUTURE AGAINST THE PROPERTY DEDICATED HEREIN WHICH RESULTS FROM GRANTORS CONVERSION OF THE PROPERTY FROM AGRICULTURAL USE.

WITNESS OF PLAT EXECUTION:
 IN WITNESS WHEREOF, DOMINION HOMES, INC., AN OHIO CORPORATION, HAS CAUSED THIS PLAT TO BE EXECUTED BY ITS DULY AUTHORIZED OFFICER THIS 30th DAY OF MAY, 2011.

SIGNED AND ACKNOWLEDGED IN THE PRESENCE OF:
 DOMINION HOMES, INC. AN OHIO CORPORATION
 PRINTED: Steve Peck BY: Matthew J. Callahan
 PRINTED: Kevin Kershner MATTHEW J. CALLAHAN
 VICE PRESIDENT LAND DEVELOPMENT

STATE OF OHIO SS:
 THE FOREGOING PLAT WAS ACKNOWLEDGED BEFORE ME THIS 30th DAY OF MAY, 2011, BY MATTHEW J. CALLAHAN, VICE PRESIDENT LAND DEVELOPMENT OF DOMINION HOMES, INC. AN OHIO CORPORATION, ON BEHALF OF THE CORPORATION.

IN WITNESS WHEREOF, I HAVE HEREUNTO SET MY HAND AND AFFIXED MY OFFICIAL SEAL THIS 30th DAY OF MAY, 2011.

MY COMMISSION EXPIRES May 4, 2013
 NOTARY PUBLIC, STATE OF OHIO

CITY OF COLUMBUS APPROVALS:
 APPROVED THIS 15th DAY OF JUNE, 2011 Tracie A. Davis / PEB
 BUILDING AND ZONING SERVICES
 DEPARTMENT DIRECTOR,
 COLUMBUS, OHIO
 APPROVED THIS 15th DAY OF June, 2011 Hassan Y. Zaher / moz
 CITY ENGINEER, COLUMBUS, OHIO
 APPROVED THIS 16th DAY OF June, 2011 Mark J. Dale
 DIRECTOR OF PUBLIC SERVICE
 COLUMBUS, OHIO

APPROVED AND ACCEPTED THIS ____ DAY OF _____, 2011, BY ORDINANCE NO. _____, WHEREIN THE EASEMENTS, ROAD, DRIVE AND AVENUE OF BIG RUN RIDGE SECTION 2 PART 1 HEREON ARE ACCEPTED AS SUCH BY THE COUNCIL OF THE CITY OF COLUMBUS.

IN WITNESS WHEREOF, I HAVE HEREUNTO SET MY HAND AND AFFIXED MY SEAL THIS ____ DAY OF _____, 2011

FRANKLIN COUNTY AUDITOR:
 CITY CLERK, COLUMBUS, OHIO
 TRANSFERRED THIS ____ DAY OF _____, 2011
 AUDITOR, FRANKLIN COUNTY, OHIO
 DEPUTY AUDITOR, FRANKLIN COUNTY, OHIO

FRANKLIN COUNTY RECORDER:
 FILED FOR RECORD THIS ____ DAY OF _____, 2011, AT ____ M
 FEE ____ FILE NO. _____
 RECORDER, FRANKLIN COUNTY, OHIO
 RECORDED THIS ____ DAY OF _____, 2011. PLAT BOOK ____ PAGES.
 DEPUTY RECORDER, FRANKLIN COUNTY, OHIO