

Length of Contiguity: ±1509 feet (not including pending annexation)
 Total Length of Perimeter: ±2360 feet
 Percentage of Contiguity: ±63.9%

No islands of township property are created by this annexation.

6.1± ACRE ANNEXATION FROM THE TOWNSHIP OF NORWICH TO THE CITY OF COLUMBUS

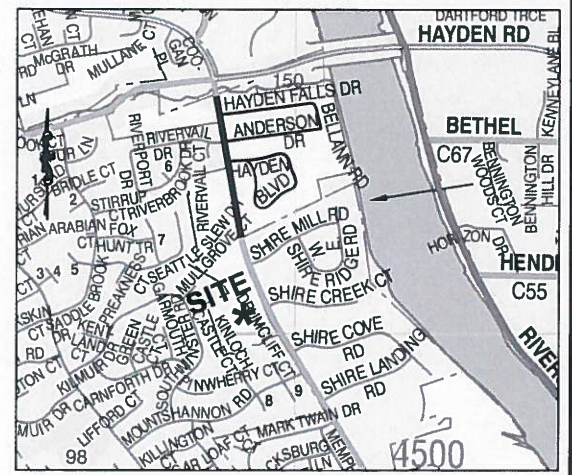
County of Franklin
 State of Ohio, Township of Norwich
 Virginia Military Survey No. 4854

Legend

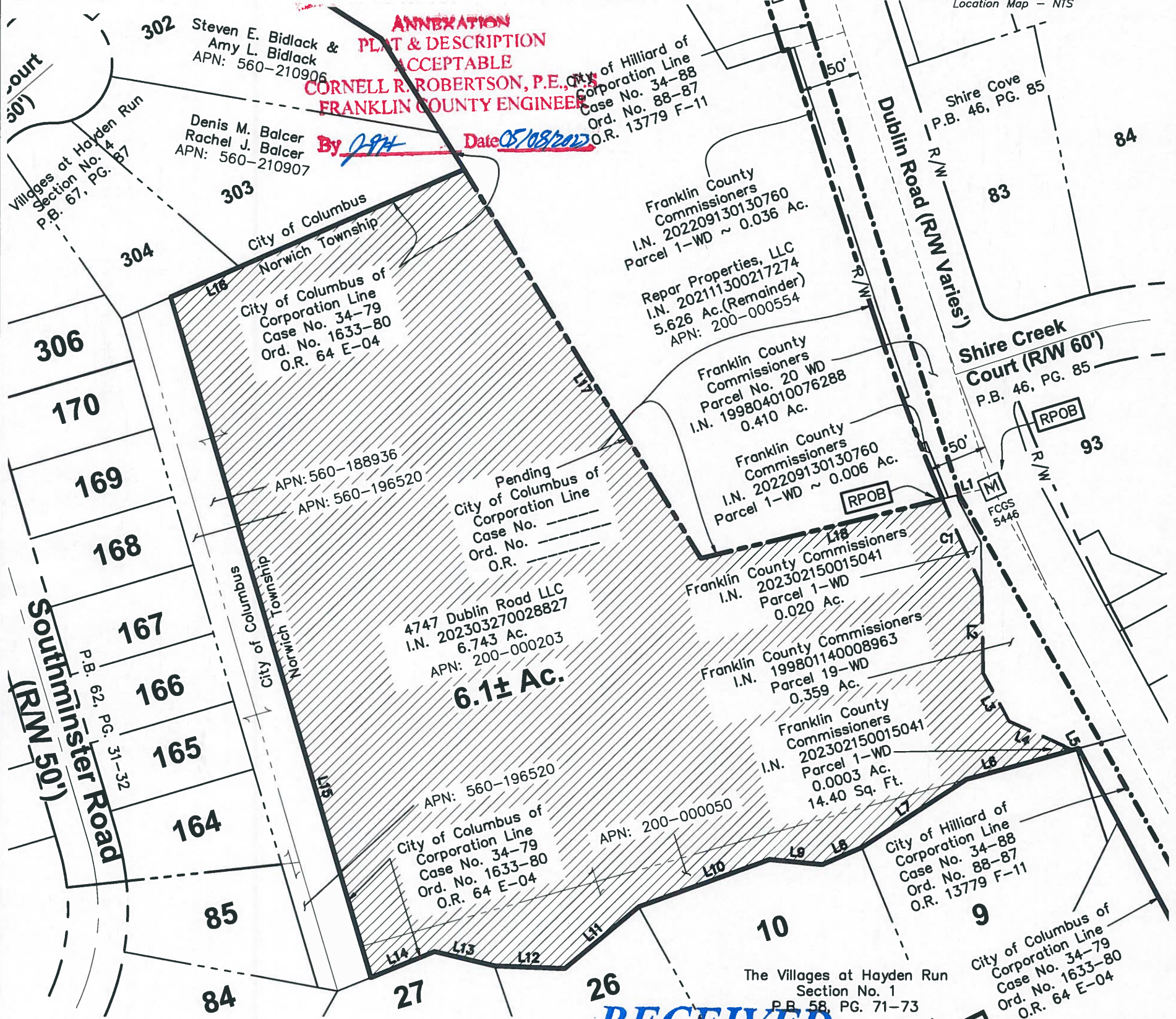
- Area to be Annexed
- Existing City of Columbus Corp Line
- Proposed City of Columbus Corp Line
- Pending City of Columbus Corp Line



1 inch = 100 feet



Location Map - NTS



**ANNEXATION
 PLAT & DESCRIPTION
 ACCEPTABLE**
CORNELL R. ROBERTSON, P.E., P.S.
FRANKLIN COUNTY ENGINEER
 By *[Signature]* Date 05/08/2023
 City of Hilliard of Corporation Line
 Case No. 34-88
 Ord. No. 88-87
 O.R. 13779 F-11

RECEIVED

MAY 08 2023
 25

Franklin County Engineer
Cornell R. Robertson, P.E., P.S.

CURVE TABLE					
NO.	DELTA	RADIUS	LENGTH	CHORD BEARING	CHORD DIST.
C1	002°22'40"	1959.89'	81.33'	S24°09'57"E	81.33'

This exhibit is created from information obtained from the Franklin County Auditor's Office and the Franklin County Recorder's Office. This exhibit is not to be used for the transfer of land.

STATE OF OHIO
DOUGLAS HOCK
 S-7661
 REGISTERED
 PROFESSIONAL SURVEYOR
 Date: _____

LINE TABLE		
LINE	BEARING	DISTANCE
L1	S76°06'54"W	42.62'
L2	S01°12'01"E	73.00'
L3	S28°05'46"E	46.36'
L4	S65°53'01"E	50.67'
L5	S28°23'17"E	5.56'
L6	S74°29'27"W	87.90'
L7	S56°44'40"W	105.00'
L8	S66°34'55"W	36.35'
L9	N84°28'24"W	44.52'
L10	S70°04'29"W	116.80'
L11	S49°48'44"W	81.44'

L12	N87°41'31"W	58.82'
L13	N76°25'18"W	51.90'
L14	S67°43'58"W	57.93'
L15	N16°27'01"W	599.71'
L16	N66°22'54"E	268.64'

L17	S31°21'03"E	384.46'
L18	N76°06'54"E	209.26'

DRAWN BY: *DRB* JOB NO.: 22-0001-1285
 DATE: 03/28/23 CHECKED BY: *BCK*

ADVANCED
CIVIL DESIGN

781 Science Boulevard, Suite 100
Gahanna, Ohio 43230
ph 614.428.7750
fax 614.428.7755

ENGINEERS SURVEYORS

Z:\22-0001-1285\DWG\PRODUCTION DRAWINGS\SURVEY\22-0001-1285 Annex bell.dwg page 1 May 08, 2023 9:13:13am dbickham