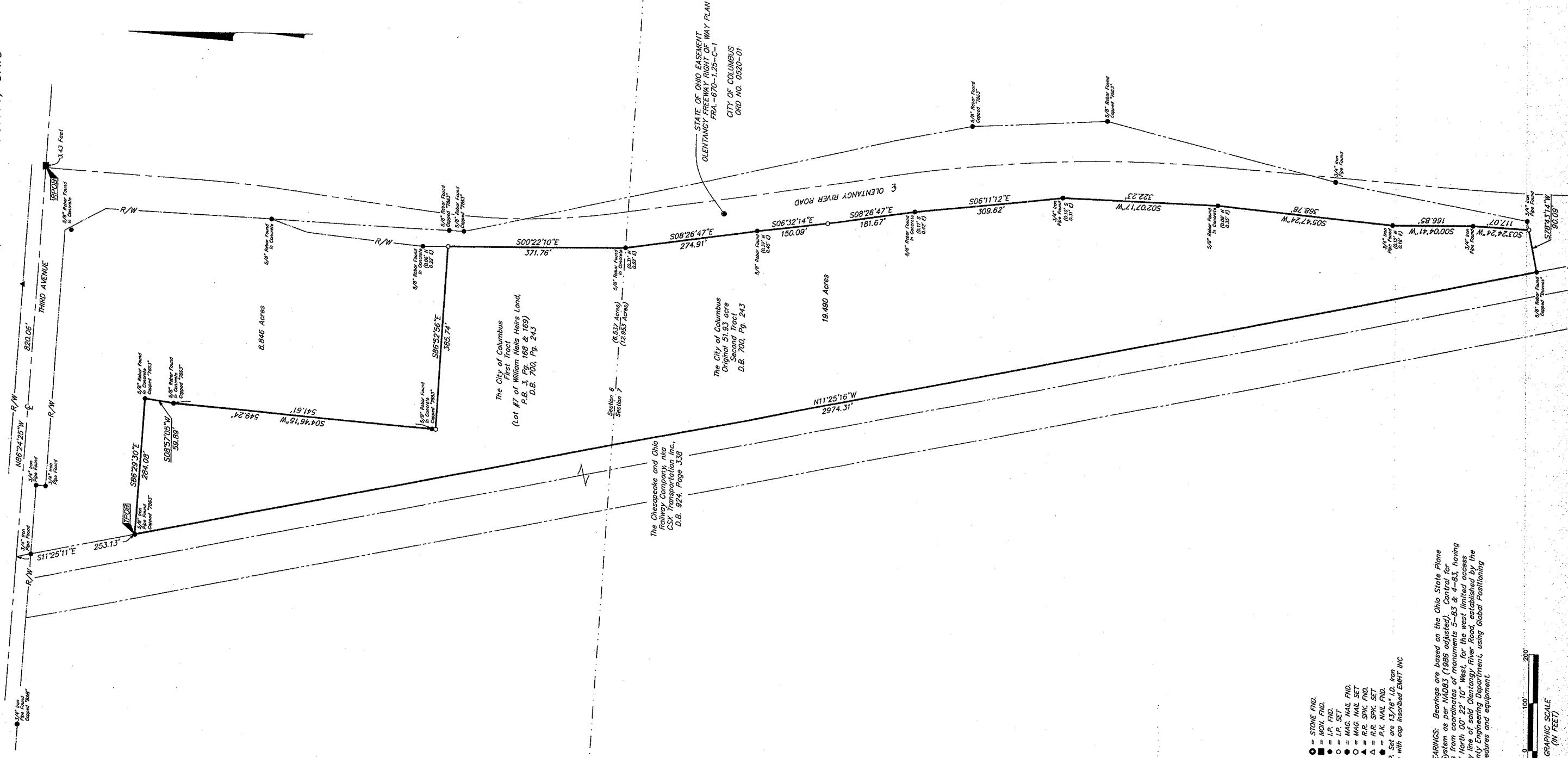
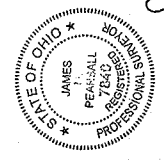
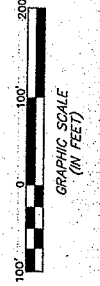


SURVEY OF ACREAGE PARCEL
SECTION 6 AND 7, TOWNSHIP 5, RANGE 22
REFUGEE LANDS
CITY OF COLUMBUS, FRANKLIN COUNTY, OHIO



- = STONE FND.
- = MON. FND.
- = I.P. FND.
- = I.P. SET
- = MAG. NAIL FND.
- = MAG. NAIL SET
- ▲ = R.R. SPRK. FND.
- ▲ = R.R. SPRK. SET
- = P.R. NAIL FND.
- = P.R. NAIL SET
- I.P. SET are 1/2" x 1/8" I.D. Iron pipe with cap inscribed EMRT INC

BASIS OF BEARINGS: Bearings are based on the Ohio State Plane Coordinate System as per WD83 (1986 adjusted) control. The bearing was from coordinates of monument 83 having a bearing of North 00° 22' 10" West for the west line of the right-of-way line of said Olentangy River Road, established by the Franklin County Engineering Department, using Global Positioning System procedures and equipment.



By: *James W. Leonard*
 Professional Surveyor No. 7840

Date:	February 17, 2005
Scale:	1" = 100'
Job No:	2005-0052
Sheet:	1 of 1

MARK	DATE	DESCRIPTION	REVISIONS