

SUGAR FARMS SECTION 6

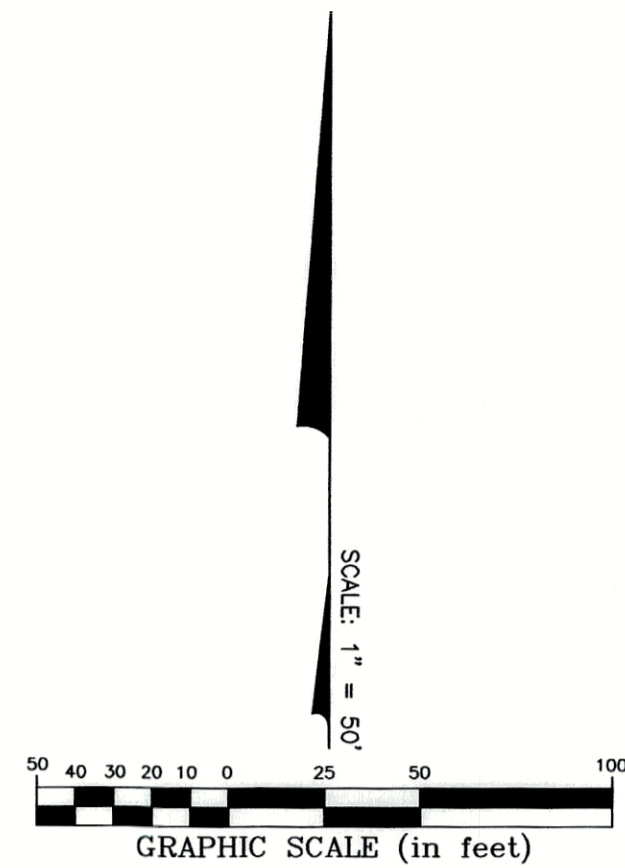
Line Type Legend

- Existing Property Line
- Existing R/W Line
- Existing R/W Centerline
- Existing Easement Line
- Subdivision Boundary Line
- Lot Line
- R/W Line
- R/W Centerline
- Easement Line

Legend

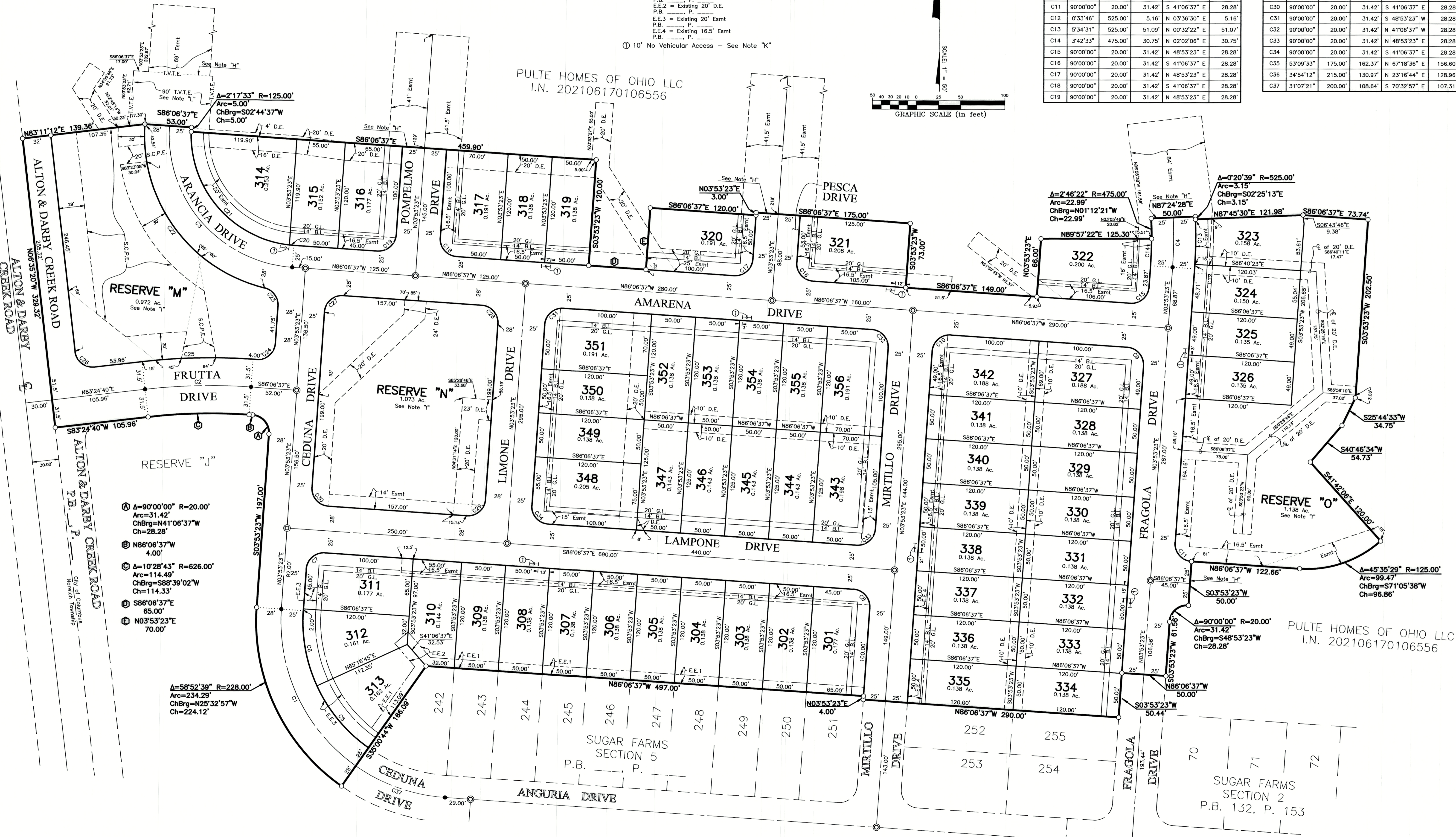
- S.C.P.E. = Stormwater Control Practice Easement
- B.L. = Building Line
- G.L. = Garage Line
- D.E. = Drainage Easement
- Esmt = Easement
- (R) = Radial to Centerline
- (NR) = Not Radial to Centerline
- E.E.1 = Existing 10' D.E.
- P.B.1 = P.
- E.E.2 = Existing 20' D.E.
- P.B.2 = P.
- E.E.3 = Existing 20' Esmt
- P.B.3 = P.
- E.E.4 = Existing 16.5' Esmt
- P.B.4 = P.

① 10' No Vehicular Access - See Note "K"



CURVE TABLE					
CURVE NO.	DELTA	RADIUS	LENGTH	CHORD BEARING	CHORD DISTANCE
C1	58°52'39"	200.00'	205.52'	N 25°32'57" W	196.60'
C2	10°28'43"	657.50'	120.25'	N 88°39'02" E	120.08'
C3	90°00'00"	150.00'	235.62'	N 41°06'37" W	212.13'
C4	6°28'55"	500.00'	56.57'	N 00°38'55" E	56.54'
C5	30°16'01"	175.00'	92.45'	S 39°51'15" E	91.37'
C6	28°36'38"	175.00'	87.39'	S 10°24'56" E	86.48'
C7	90°00'00"	20.00'	31.42'	S 48°53'23" W	28.28'
C8	90°00'00"	20.00'	31.42'	N 41°06'37" W	28.28'
C9	90°00'00"	20.00'	31.42'	N 41°06'37" W	28.28'
C10	90°00'00"	20.00'	31.42'	S 48°53'23" W	28.28'
C11	90°00'00"	20.00'	31.42'	S 41°06'37" E	28.28'
C12	0°33'46"	525.00'	5.16'	N 03°36'30" E	5.16'
C13	5°34'31"	525.00'	51.09'	N 00°32'22" E	51.07'
C14	3°42'33"	475.00'	30.75'	N 02°02'06" E	30.75'
C15	90°00'00"	20.00'	31.42'	N 48°53'23" E	28.28'
C16	90°00'00"	20.00'	31.42'	S 41°06'37" E	28.28'
C17	90°00'00"	20.00'	31.42'	N 48°53'23" E	28.28'
C18	90°00'00"	20.00'	31.42'	S 41°06'37" E	28.28'
C19	90°00'00"	20.00'	31.42'	N 48°53'23" E	28.28'

CURVE TABLE					
CURVE NO.	DELTA	RADIUS	LENGTH	CHORD BEARING	CHORD DISTANCE
C20	2°17'33"	125.00'	5.00'	S 84°57'51" E	5.00'
C21	85°24'54"	125.00'	186.35'	S 41°06'37" E	169.56'
C22	80°24'21"	178.00'	249.80'	S 36°18'48" E	229.80'
C23	80°24'21"	20.00'	28.07'	N 36°18'48" W	25.82'
C24	90°00'00"	20.00'	31.42'	N 48°53'23" E	28.28'
C25	10°28'43"	689.00'	126.01'	S 88°39'02" W	125.83'
C26	90°00'00"	20.00'	31.42'	S 51°35'20" E	28.28'
C27	90°00'00"	20.00'	31.42'	S 41°06'37" E	28.28'
C28	90°00'00"	20.00'	31.42'	N 41°06'37" W	28.28'
C29	90°00'00"	20.00'	31.42'	N 48°53'23" E	28.28'
C30	90°00'00"	20.00'	31.42'	S 41°06'37" E	28.28'
C31	90°00'00"	20.00'	31.42'	S 48°53'23" W	28.28'
C32	90°00'00"	20.00'	31.42'	N 41°06'37" W	28.28'
C33	90°00'00"	20.00'	31.42'	N 48°53'23" E	28.28'
C34	90°00'00"	20.00'	31.42'	S 41°06'37" E	28.28'
C35	5°30'33"	175.00'	162.37'	N 67°18'36" E	156.60'
C36	3°45'12"	215.00'	130.97'	N 23°16'44" E	128.96'
C37	3°10'21"	200.00'	108.64'	S 70°32'57" E	107.31'



PULTE HOMES OF OHIO LLC
I.N. 202106170106556

PULTE HOMES OF OHIO LLC
I.N. 202106170106556

- Ⓐ A=90°00'00" R=20.00'
Arc=31.42'
ChBrg=N41°06'37"W
Ch=28.28'
- Ⓑ N86°06'37"W
4.00'
- Ⓒ A=10°28'43" R=626.00'
Arc=114.49'
ChBrg=S88°39'02"W
Ch=114.33'
- Ⓓ S86°06'37"E
65.00'
- Ⓔ N03°53'23"E
70.00'

A=58°52'39" R=228.00'
Arc=234.29'
ChBrg=N25°32'57"W
Ch=224.12'

A=45°35'29" R=125.00'
Arc=99.47'
ChBrg=S71°05'38"W
Ch=96.86'

A=90°00'00" R=20.00'
Arc=31.42'
ChBrg=S48°53'23"W
Ch=28.28'