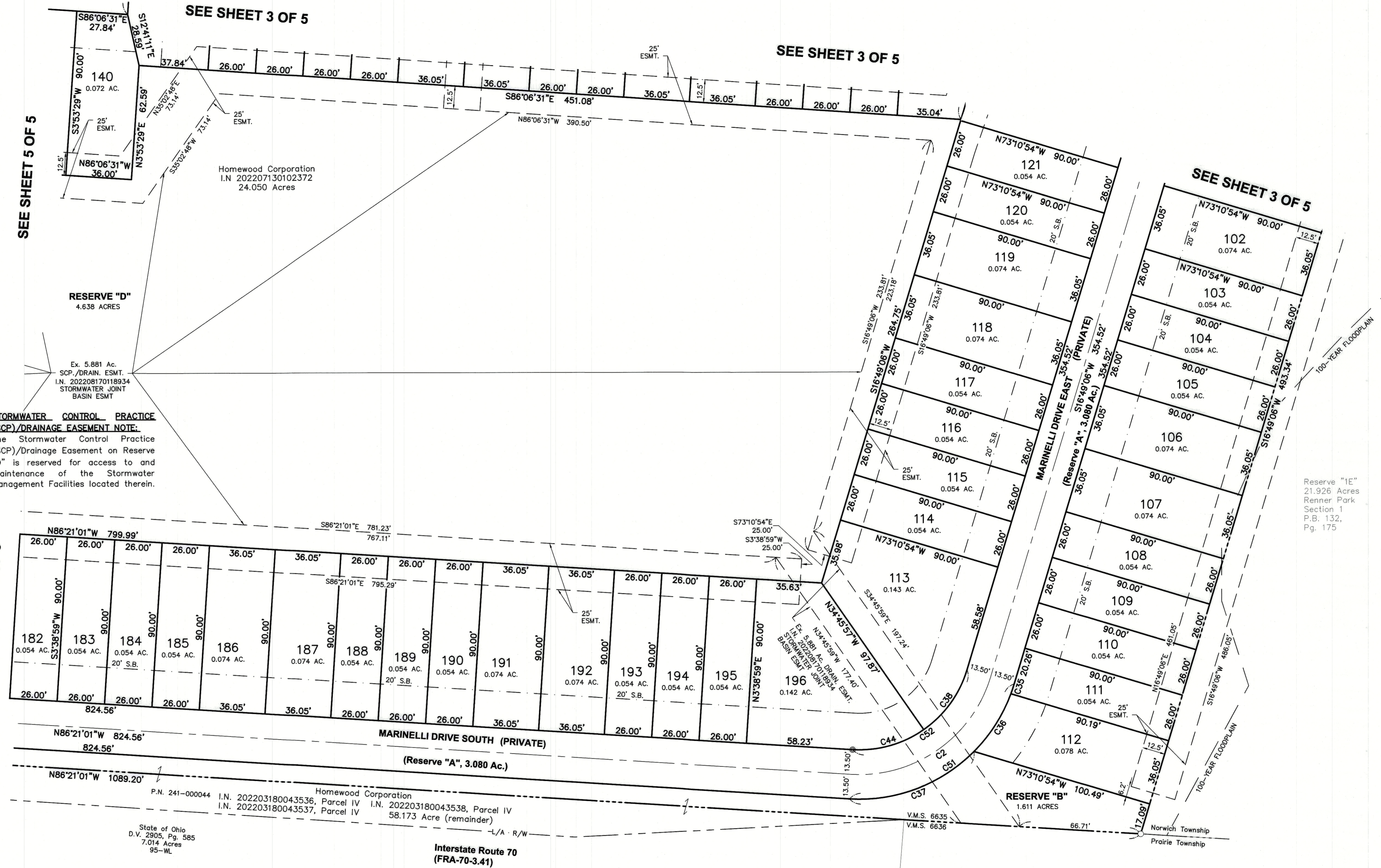


# VILLAS AT RENNER PARK

VIRGINIA MILITARY SURVEY NO. 6635  
COLUMBUS-HILLIARD, NORWICH TOWNSHIP,  
FRANKLIN COUNTY, OHIO

CURVE TABLE					
NO.	DELTA	RADIUS	LENGTH	CHORD BEARING	CHORD DIST.
C1	102°55'37"	50.00'	89.82'	S34°38'42"E	78.22'
C2	076°49'53"	75.00'	100.57'	S55°14'03"W	93.20'
C3	058°40'49"	100.00'	102.42'	N57°00'36"W	98.00'
C4	031°33'41"	38.00'	20.93'	N11°53'21"W	20.67'
C5	030°00'00"	50.00'	26.18'	N18°53'29"E	25.88'
C6	030°00'00"	50.00'	26.18'	N18°53'29"E	25.88'
C7	090°00'00"	38.00'	59.69'	S48°53'29"W	53.74'
C8	030°00'00"	50.00'	26.18'	S71°06'31"E	25.88'
C9	028°43'04"	63.50'	31.83'	S19°31'58"W	31.50'
C10	001°16'56"	63.50'	1.42'	S04°31'58"W	1.42'
C11	032°02'49"	24.50'	13.70'	N19°54'54"E	13.53'
C12	032°02'49"	24.50'	13.70'	S12°07'55"E	13.53'
C13	090°00'00"	24.50'	38.48'	S48°53'29"W	34.65'
C14	030°00'00"	36.50'	19.11'	N71°06'31"W	18.89'
C15	090°00'00"	24.50'	38.48'	N11°06'31"W	34.65'
C16	030°00'00"	63.50'	33.25'	N18°53'29"E	32.87'
C17	090°00'00"	24.50'	38.48'	N78°53'29"E	34.65'
C18	030°00'00"	63.50'	33.25'	S71°06'31"E	32.87'
C19	030°00'00"	36.50'	19.11'	N18°53'29"E	18.89'
C20	090°00'00"	24.50'	38.48'	N41°06'31"W	34.65'
C21	090°00'00"	24.50'	38.48'	S48°53'29"W	34.65'
C22	090°00'00"	24.50'	38.48'	S41°06'31"E	34.65'
C23	090°00'00"	24.50'	38.48'	N48°53'29"E	34.65'
C24	090°00'00"	24.50'	38.48'	N41°06'31"W	34.65'
C25	090°00'00"	24.50'	38.48'	S48°53'29"W	34.65'
C26	090°00'00"	24.50'	38.48'	S41°06'31"E	34.65'
C27	090°00'00"	24.50'	38.48'	N48°53'29"E	34.65'
C28	090°00'00"	24.50'	38.48'	N41°06'31"W	34.65'
C29	090°00'00"	24.50'	38.48'	S48°53'29"W	34.65'
C30	090°00'00"	24.50'	38.48'	S41°06'31"E	34.65'
C31	090°00'00"	24.50'	38.48'	N41°06'31"W	34.65'
C32	019°49'08"	63.50'	21.96'	N31°38'33"W	21.86'
C33	022°08'38"	63.50'	24.54'	N10°39'40"W	24.39'
C34	016°24'27"	63.50'	18.18'	N08°36'53"E	18.12'
C35	003°43'11"	88.50'	5.75'	N18°40'42"E	5.74'
C36	024°27'32"	88.50'	37.78'	N32°46'03"E	37.49'
C37	048°39'10"	88.50'	75.15'	N69°19'24"E	72.91'
C38	038°24'57"	61.50'	41.23'	S36°01'34"W	40.47'
C39	102°55'37"	36.50'	65.57'	S34°38'42"E	57.10'
C40	090°00'00"	24.50'	38.48'	N48°53'29"E	34.65'



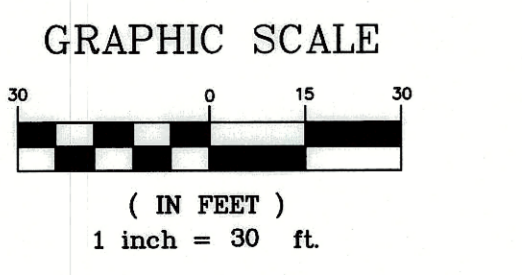
SEE SHEET 5 OF 5

SEE SHEET 5 OF 5

SEE SHEET 3 OF 5

SEE SHEET 3 OF 5

- LEGEND**
- = IRON PIN SET
  - = PERMANENT MARKER
  - ⊗ = PK NAIL SET
  - = IRON PIN FOUND
  - ⊗ = PK NAIL FOUND
- "DRAIN. ESMT" = DRAINAGE EASEMENT  
 "ESMT." = EASEMENT  
 "SCP" = STORM CONTROL PRACTICE



**FINAL PLAT**

PLAN PREPARED BY: JEP  
CHECKED BY: JEP

781 Science Blvd., Suite 100  
Gahanna, Ohio 43230  
ph 614.428.7750  
fax 614.428.7755

**ADVANCED CIVIL DESIGN**  
ENGINEERS SURVEYORS

SHEET 4 / 5

DATE: August 22, 2022 JOB NO: 21-0009-606

Z:\21-0009-606\DWG\PRODUCTION DRAWINGS\SURVEY\Villas Plat.dwg SHEET 4 Aug 22, 2022 - 12:14:24pm jphelps