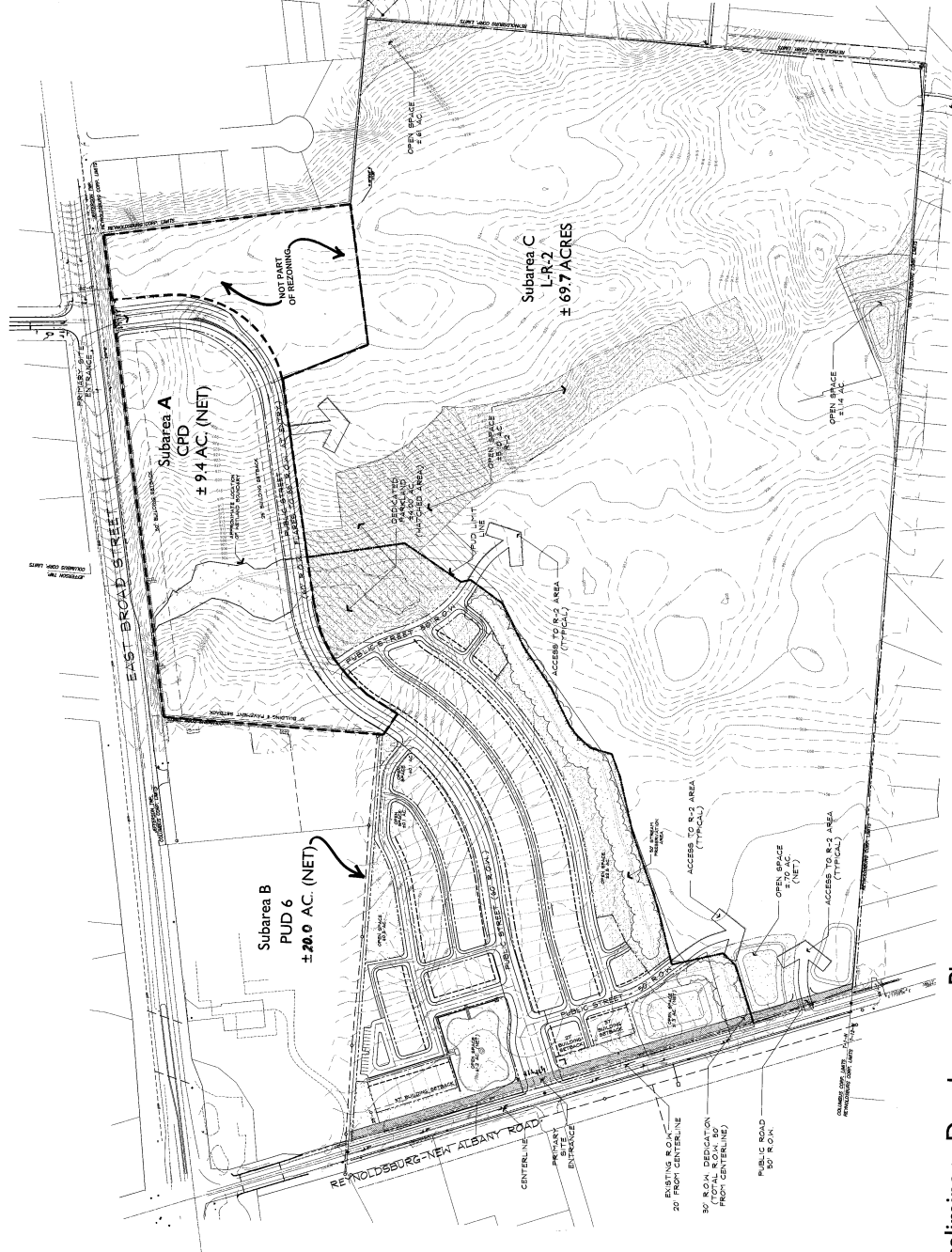


SITE DATA

CPD	GROSS SITE AREA: ±11.9 ACRES
	NET DEDICATION: ±2.5 ACRES
	NET SITE AREA: ±9.4 ACRES
SUBAREA B (PUD 6)	GROSS SITE AREA: ±23.3 ACRES
	NET DEDICATION: ±3.3 ACRES
	NET SITE AREA: ±20.0 ACRES
	TOTAL DWELLING UNITS: 106
	DENSITY: 5.30/DU/AC
	REQUIRED OPEN SPACE: 1.9% ACRES
	PROVIDED OPEN SPACE: ±7.6 ACRES
SUBAREA C (L-R-2)	SITE AREA: ±69.7 ACRES
	TOTAL DWELLING UNITS: 308
	DENSITY: 4.42/DU/AC
	OPEN SPACE: ±6.6 ACRES
TOTAL SITE AREA:	±104.9 ACRES
TOTAL DWELLING UNITS:	414
OVERALL DENSITY:	3.95 DU/AC
TOTAL PUBLIC R.O.W.:	±5.0 ACRES
TOTAL OPEN SPACE:	±15.4 ACRES
REQUIRED PARKLAND (POO):	±4.4 ACRES
PROVIDED PARKLAND (POO):	±40 ACRES PLUS DEVELOPED PLAYGROUND

All acreages are approximately and subject to adjustment with final surveying (see engineering and plan).



Z03-082
SHEET 1 OF 5

Preliminary Development Plan
REYNOLDS CROSSING



May 11, 2004

Signature: *[Signature]* Date: 5/11/04
 Signature: *[Signature]* Date: 5/11/04
 Signature: *[Signature]* Date: 5/11/04

