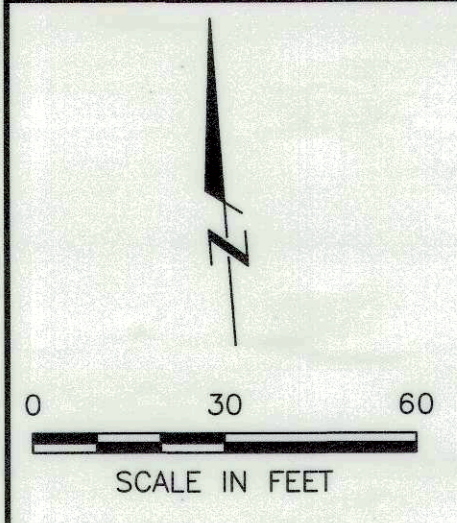
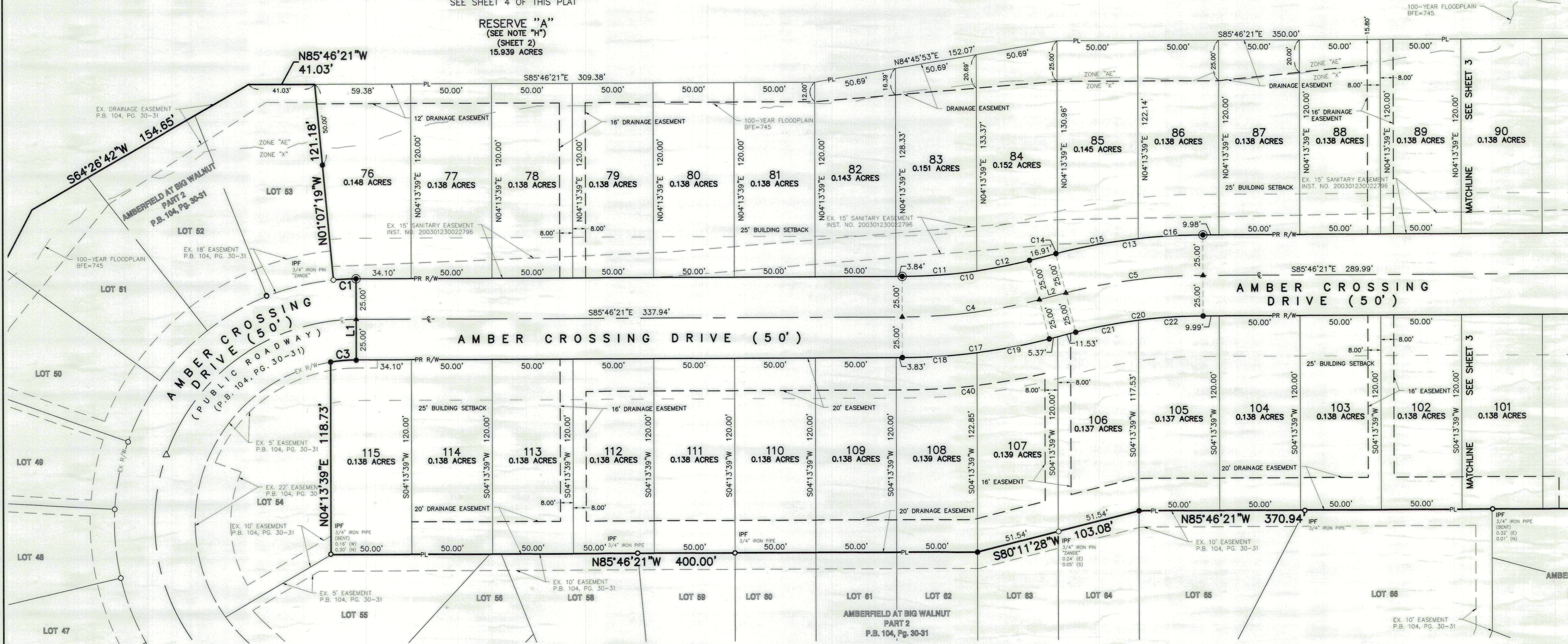


FINAL PLAT AMBERFIELD AT BIG WALNUT SECTION 3



FOR ENTIRE RESERVE "A" AND "B"
SEE SHEET 4 OF THIS PLAT

RESERVE "A"
(SEE NOTE "H")
(SHEET 2)
15.939 ACRES



LINE TABLE		
LINE	LENGTH	BEARING
L1	50.00'	N04°13'39"E
L2	16.91'	N80°11'28"E

CURVE TABLE					
NO.	LENGTH	RADIUS	DELTA	CHORD	CHORD BEARING
C1	14.00'	150.00'	005°20'58"	14.00'	N88°26'50"W
C3	15.97'	100.30'	009°07'14"	15.95'	S89°39'37"W
C4	85.74'	350.00'	014°02'11"	85.53'	N87°12'33"E
C5	85.74'	350.00'	014°02'11"	85.53'	N87°12'33"E
C10	79.62'	325.00'	014°02'11"	79.42'	N87°12'33"E
C11	46.32'	325.00'	008°09'56"	756.83'	S89°51'19"E
C12	33.30'	325.00'	005°52'15"	756.14'	N83°07'35"E
C13	91.87'	375.00'	014°02'11"	91.64'	N87°12'33"E
C14	0.96'	375.00'	000°08'50"	755.41'	S80°15'53"W

CURVE TABLE					
NO.	LENGTH	RADIUS	DELTA	CHORD	CHORD BEARING
C15	50.81'	375.00'	007°45'48"	50.77'	S84°13'12"W
C16	40.09'	375.00'	006°07'33"	756.47'	N88°50'08"W
C17	91.87'	375.00'	014°02'11"	91.64'	N87°12'33"E
C18	46.28'	375.00'	007°04'17"	756.83'	S89°18'30"E
C19	45.59'	375.00'	006°57'54"	756.78'	N83°40'24"E
C20	79.62'	325.00'	014°02'11"	79.42'	N87°12'33"E
C21	39.51'	325.00'	006°57'52"	756.44'	S83°40'24"W
C22	40.11'	325.00'	007°04'19"	756.47'	N89°18'31"W
C40	88.91'	395.00'	012°53'50"	88.73'	S87°46'44"W

- Legend**
- ⊕ Centerline
 - R/W Right-of-Way
 - Iron Pin Found (IPF)
 - Iron Pin Set
 - Iron Pipe Found (IPF)
 - △ Mag Nail Found
 - ▲ Mag Nail Set
 - Permanent Marker Set
 - 100 Lot Number

E. P. FERRIS
AND ASSOCIATES
INC.

880 KING AVENUE
COLUMBUS, OHIO 43212
(614) 299-2999
(614) 299-2992 (FAX)
www.EPFERRIS.com

Consulting Civil Engineers and Surveyors

DRWN BY JEC CHK BY MJA DATE 10/08/2020

Drawing: M:\1156002_AmberfieldatBigWalnutPart3.DWG Production Drawings\Part3.DWG Production Drawings\Part3.DWG Produced by: jecfrin