

TEMPORARY EASEMENT T-6

0.171 ACRES

Situated in the State of Ohio, County of Franklin, Township of Mifflin, and located in Quarter Township 2, Township 1, Range 17, United States Military Lands, also being a part of 6.341 acres tract as described in a deed to Werner D. Rase, Trustee in Instrument No. 200506300127977 (*Tract Five*). All record references are to the Recorder's Office of Franklin County, Ohio and being particularly described as follows:

Beginning for reference, at a point at the intersection of the west right of way line of Sunbury Road and the south line of a 0.675 acre tract described in a deed to Werner D. Rase, Trustee in Instrument No. 200506300127977 (*Tract Four*), said point also being the northeast corner of said Grantor's 6.341 acre tract;

Thence **N 86 degrees 43 minutes 27 seconds W** a distance of **847.82 feet** with the south line of said 0.675 acre tract, the Grantor's north line and then crossing the Grantor's tract to a point;

Thence **N 02 degrees 18 minutes 34 seconds E** a distance of **31.64 feet** to the **TRUE POINT OF BEGINNING**;

Thence **N 83 degrees 34 minutes 55 seconds W** a distance of **37.86 feet** to a point;

Thence **N 18 degrees 56 minutes 44 seconds E** a distance of **180.15 feet** to the south line of a 2.061 acres tract described in a deed to Gene P. Smith and Yolanda Smith in Instrument No. 200808070120682, same being the north line of the Grantor's 6.341 acres tract;

Thence **S 86 degrees 30 minutes 39 seconds E** a distance of **48.73 feet** with the south line of Smith's 2.061 acres tract and the Grantor's north line to a point;

Thence **S 22 degrees 41 minutes 00 seconds W** a distance of **166.92 feet** crossing the Grantor's tract to a point;

Thence **S 16 degrees 13 minutes 55 seconds W** a distance of **18.38 feet** to the **TRUE POINT OF BEGINNING**, containing 0.171 acre of land more or less.

The above described area contains a total of **0.171 acres** within Franklin County Auditor's Parcel Number 190-000114, which includes 0.000 acres in the present road occupied.

Grantor claims title by Instrument recorded in Instrument No. 200506300127977, in the records of Franklin County, Ohio.

Bearings used in this description are based on Ohio State Plane Coordinates, South Zone, NAD 83.

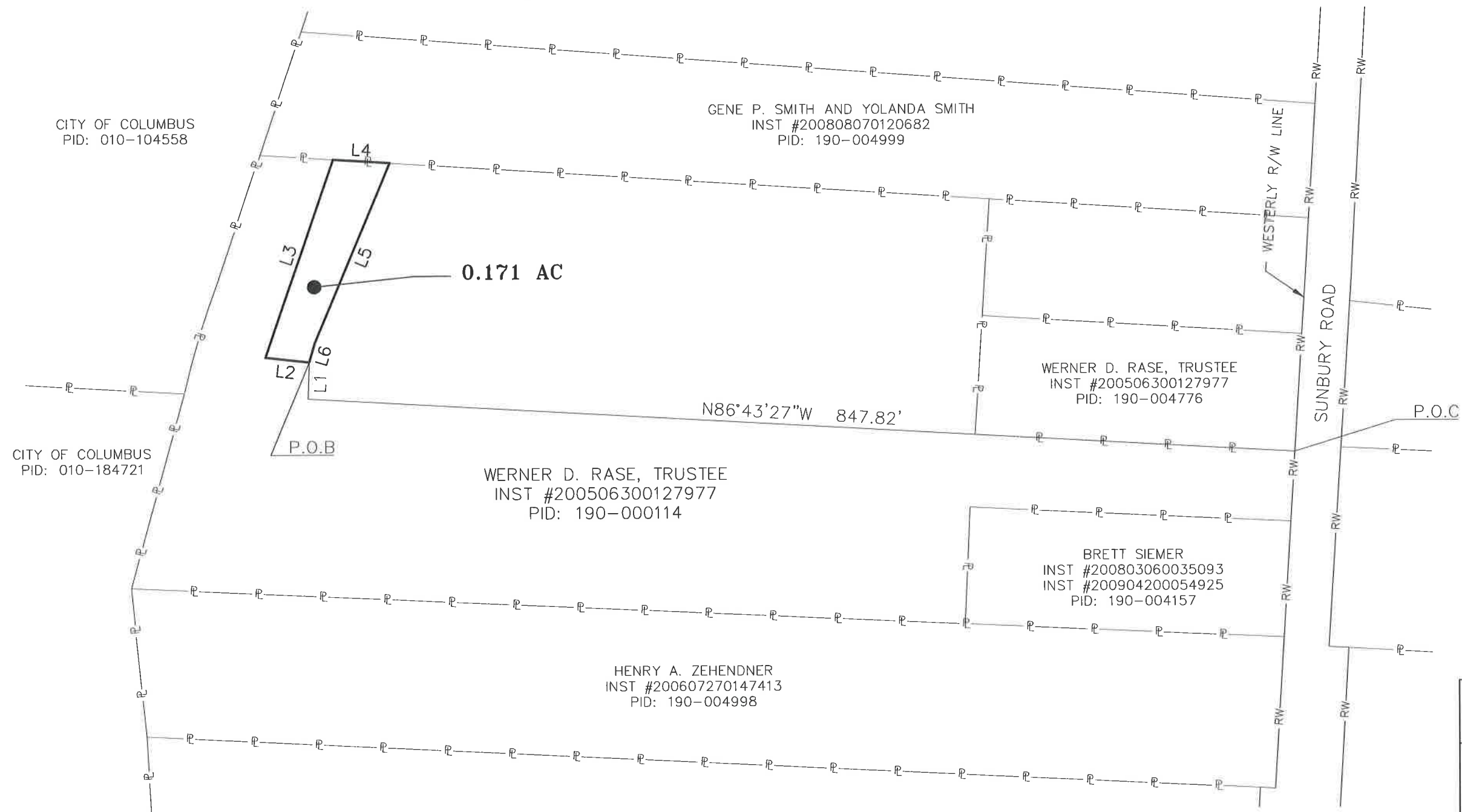
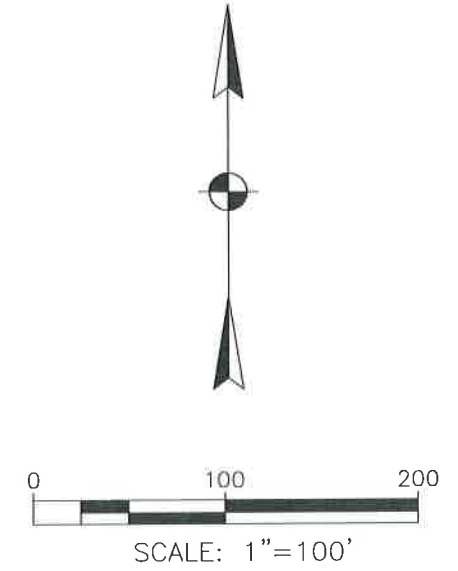
This description was prepared from existing records and does not represent a field survey.

Resource International, Inc.

Mark S. Ward 9-13-13
Mark S. Ward, P.S.
Professional Surveyor No. S-7514



**PLAT OF 0.171 ACRES
LOCATED IN
QTR TWP2, TWP-1, R-17, USML
MIFFLIN TOWNSHIP
FRANKLIN COUNTY, OHIO**




LINE TABLE DATA		
LINE#	BEARING	DISTANCE
L1	N02° 18' 34"E	31.64'
L2	N83° 34' 55"W	37.86'
L3	N18° 56' 44"E	180.15'
L4	S86° 30' 39"E	48.73'
L5	S22° 41' 00"W	166.92'
L6	S16° 13' 55"W	18.38'

NOTE:
THIS PLAT PREPARED FROM RECORD DOCUMENTS



PLATTED BY:
RESOURCE INTERNATIONAL, INC.
Mark S. Ward 9-13-13
MARK S. WARD P.S. No., S-7514 DATE

DESCRIPTION				
TEMPORARY EASEMENT T-6				
LOCATION				
SUNBURY ROAD COLUMBUS, OH				
CLIENT				
CHESTER ENGINEERS 88 E BROAD STREET				
 RESOURCE INTERNATIONAL, INC. 6350 PRESIDENTIAL GATEWAY COLUMBUS, OHIO 43231				
DRAWN BY:	CHECKED BY:	CREW CHIEF:	PROJECT No.	SHEET
EJG	MSW		W09-124	1 OF 1
SCALE:	DATE:			
	8-12-13			