



Location Map - NTS

GRAPHIC SCALE



1 inch = 50 feet

0.47± ACRE ANNEXATION FROM THE TOWNSHIP OF FRANKLIN TO THE CITY OF COLUMBUS

Franklin Township, Franklin County, Ohio  
Virginia Military Survey No. 422  
Part of Lot 1, William L. Miners Subd.

Length of Contiguity: ±436 feet  
Total Length of Perimeter: ±671 feet  
Percentage of Contiguity: ±65.0%

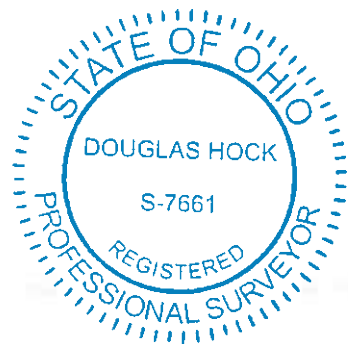
No islands of township property are created by this annexation.

Legend



Existing City of Columbus Corp Line ———

Proposed City of Columbus Corp Line - - - - -

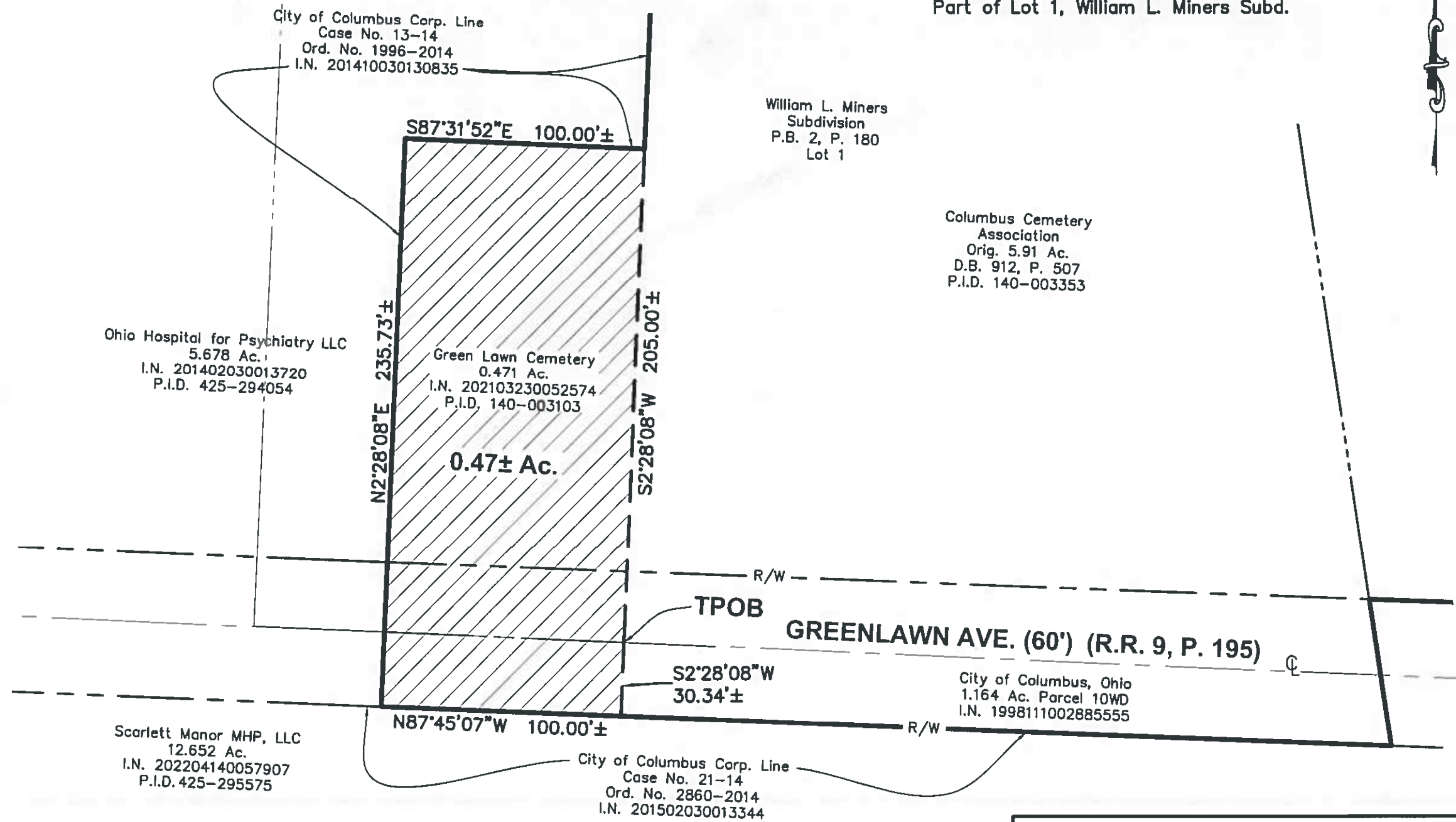


Douglas R. Hock, P.S. 7661

Date:

Advanced Civil Design, Inc  
781 Science Boulevard, Suite 100  
Gahanna, OH 43230  
Phone 614-428-7750

Job No.: 22-0001-1296  
Date: 8/16/22



William L. Miners  
Subdivision  
P.B. 2, P. 180  
Lot 1

Columbus Cemetery  
Association  
Orig. 5.91 Ac.  
D.B. 912, P. 507  
P.I.D. 140-003353

Ohio Hospital for Psychiatry LLC  
5.678 Ac.  
I.N. 201402030013720  
P.I.D. 425-294054

Green Lawn Cemetery  
0.471 Ac.  
I.N. 202103230052574  
P.I.D. 140-003103

Scarlett Manor MHP, LLC  
12.652 Ac.  
I.N. 202204140057907  
P.I.D. 425-295575

City of Columbus Corp. Line  
Case No. 21-14  
Ord. No. 2860-2014  
I.N. 201502030013344

City of Columbus, Ohio  
1.164 Ac. Parcel 10WD  
I.N. 1998111002885555



ANNEXATION  
PLAT & DESCRIPTION  
ACCEPTABLE  
CORNELL R. ROBERTSON, P.E., P.S.  
FRANKLIN COUNTY ENGINEER

By FAR Date 8/16/2022