

PROPOSED ANNEXATION OF 74.89± ACRES FROM BLENDON TOWNSHIP TO THE CITY OF COLUMBUS

QUARTER TOWNSHIP 1, TOWNSHIP 2, RANGE 17

UNITED STATES MILITARY LANDS

TOWNSHIP OF BLENDON, COUNTY OF FRANKLIN, STATE OF OHIO



LOCATION MAP
NOT TO SCALE



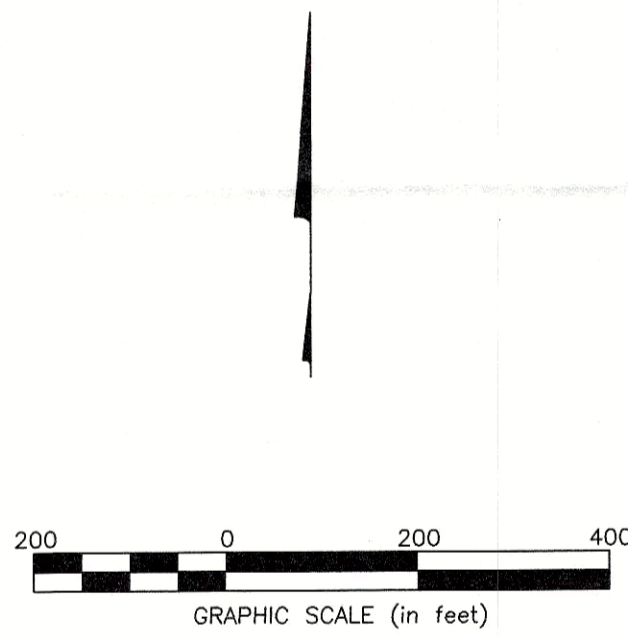
PROPOSED CORPORATION LINE

EXISTING CORPORATION LINE

Contiguity Note:
Total perimeter of annexation area is 9822.69 feet, of which 664.26 feet is contiguous with the City of Columbus by Ordinance Number 3206-2017 giving 6.7% perimeter contiguity.

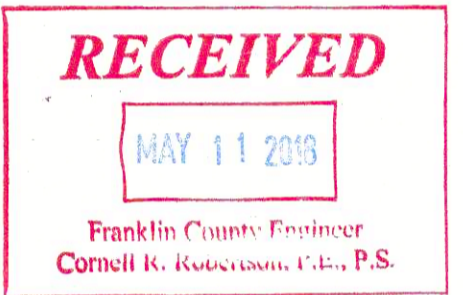
Note:
This annexation does not create islands of unincorporated areas within the limits of the area to be annexed.

A
PHILLIP J. GARDNER,
TRUSTEE
1.00 AC. (DEED)
I.N. 201004090042903



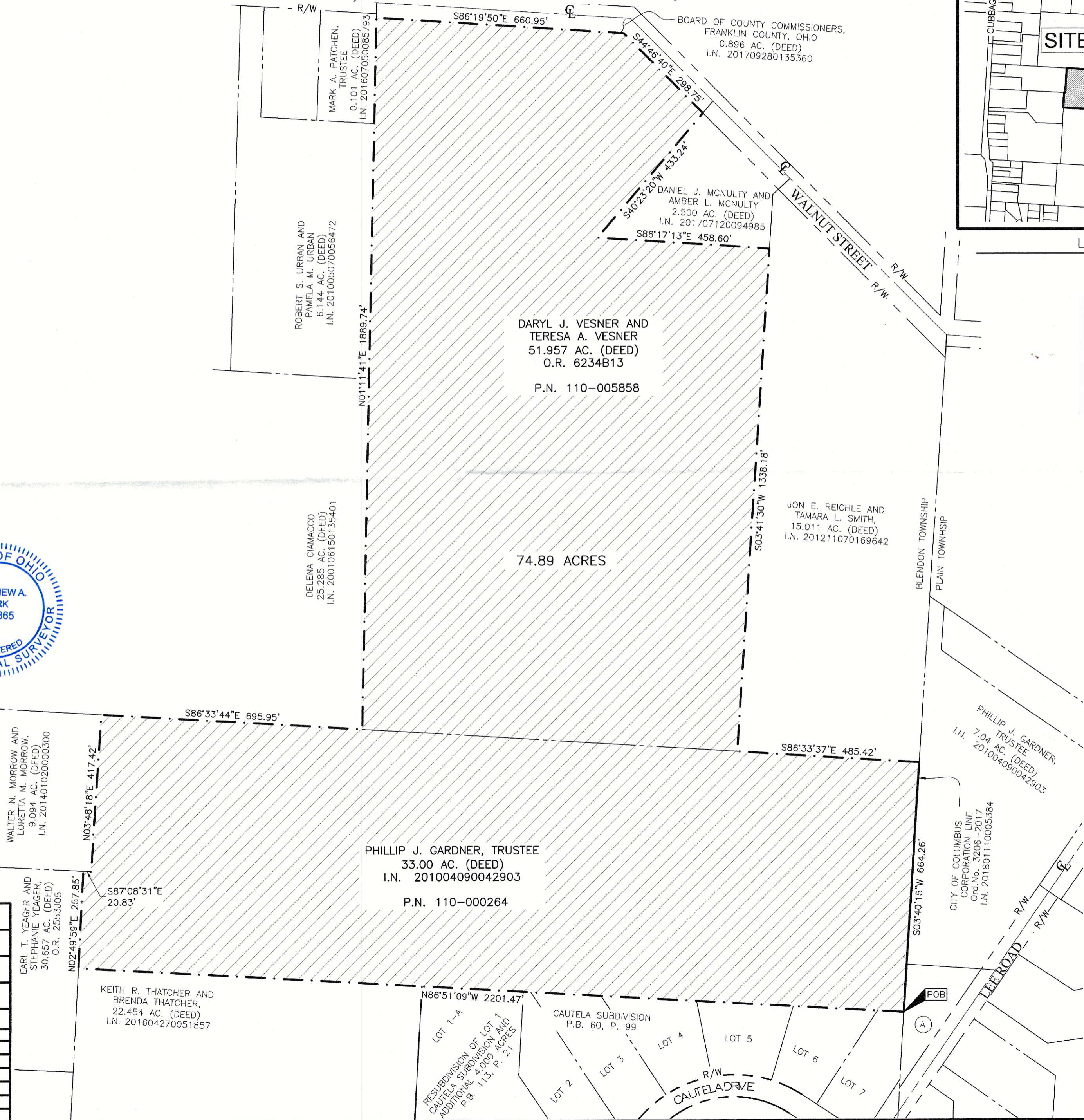
By Matthew A. Kirk
Matthew A. Kirk
Professional Surveyor No. 7865
mkirk@emht.com

Date
10 May 18



ANNEXATION
PLAT & DESCRIPTION
ACCEPTABLE
CORNELL R. ROBERTSON, P.E., P.S.
FRANKLIN COUNTY ENGINEER
By FAK Date 5/11/18

EMHT		Date: May 10, 2018
Evans, Mechwart, Hambleton & Tilton, Inc. Engineers • Surveyors • Planners • Scientists 5500 New Albany Road, Columbus, OH 43054 Phone: 614.775.4500 Toll Free: 888.775.3648 emht.com		Scale: 1" = 200'
		Job No: 2017-0716
		Sheet: 1 of 1
REVISIONS		
MARK	DATE	DESCRIPTION



20170716-DWG-CAD/FILES/EXHIBITS/20170716-VS-EXHB-ANNX-03.DWG plotted by KING, BRANDON on 5/10/2018 9:16:57 AM last saved by KING on 5/10/2018 9:16:22 AM
 Scale: