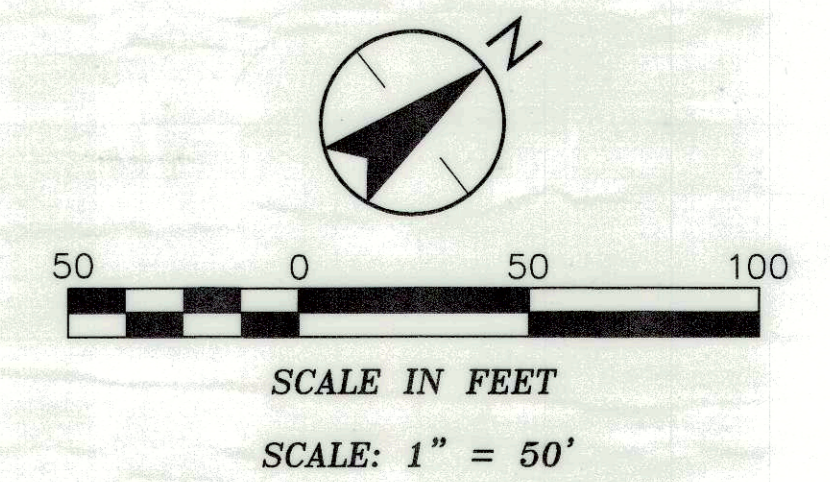


CURVE	DELTA ANGLE	RADIUS	ARC LENGTH	CHORD BEARING	CHORD LENGTH
C1	18°46'18"	225.00'	73.72'	N 65°34'09" E	73.39'
C2	78°27'47"	25.00'	34.24'	S 84°30'06" E	31.62'
C3	90°00'00"	25.00'	39.27'	N 00°21'13" W	35.36'
C4	0°08'41"	535.00'	1.35'	N 44°34'27" E	1.35'
C5	4°27'05"	535.00'	41.56'	N 42°16'34" E	41.55'
C6	2°09'34"	535.00'	20.16'	N 38°58'15" E	20.16'
C7	2°58'28"	485.00'	25.18'	S 39°22'41" W	25.17'
C8	3°46'52"	485.00'	32.01'	S 42°45'21" W	32.00'
C9	90°00'00"	25.00'	39.27'	S 89°38'47" W	35.36'
C10	12°53'11"	225.00'	50.60'	N 38°54'37" W	50.50'
C11	8°45'20"	510.00'	60.13'	S 41°16'07" W	60.10'
C12	30°18'31"	200.00'	105.90'	S 59°48'03" W	104.57'
C13	12°53'11"	250.00'	55.23'	N 38°54'37" W	55.11'
C14	26°56'34"	225.00'	105.80'	S 88°25'35" W	104.83'
C15	26°56'34"	175.00'	82.29'	N 88°25'35" E	81.54'
C16	5°07'23"	275.00'	24.59'	N 29°54'21" W	24.58'
C17	3°12'46"	225.00'	12.62'	S 28°57'02" E	12.62'
C18	6°16'59"	225.00'	24.67'	S 78°05'47" W	24.66'
C19	6°16'59"	175.00'	19.19'	N 78°05'47" E	19.18'

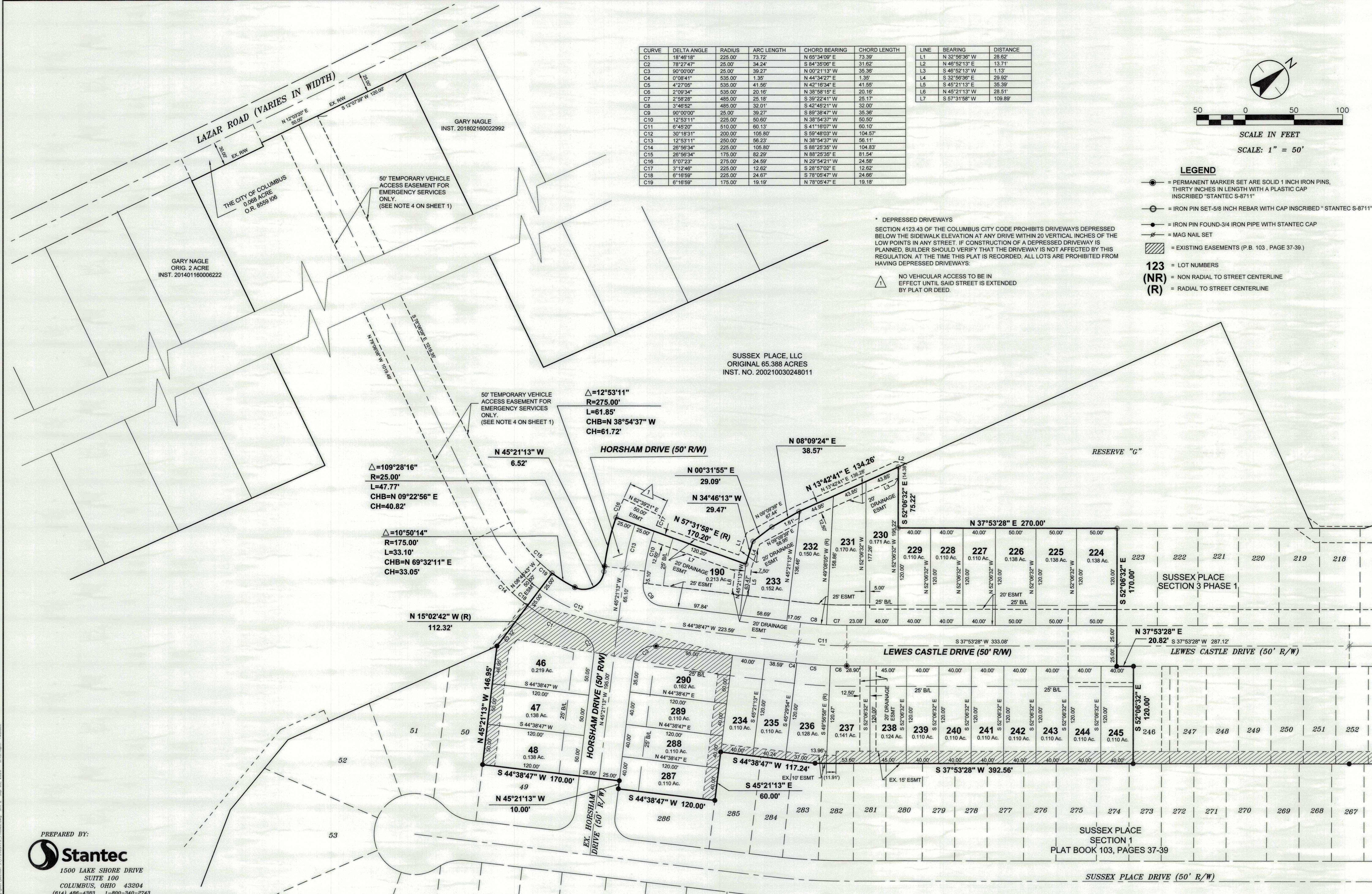
LINE	BEARING	DISTANCE
L1	N 32°56'36" W	28.82'
L2	N 46°52'13" E	13.71'
L3	S 46°52'13" E	1.13'
L4	S 32°56'36" E	29.92'
L5	S 45°21'13" E	35.39'
L6	N 45°21'13" W	28.51'
L7	S 57°31'58" W	109.89'



- LEGEND**
- = PERMANENT MARKER SET ARE SOLID 1 INCH IRON PINS, THIRTY INCHES IN LENGTH WITH A PLASTIC CAP INSCRIBED "STANTEC S-8711"
 - = IRON PIN SET-5/8 INCH REBAR WITH CAP INSCRIBED "STANTEC S-8711"
 - = IRON PIN FOUND-3/4 IRON PIPE WITH STANTEC CAP
 - ⊕ = MAG NAIL SET
 - ▨ = EXISTING EASEMENTS (P.B. 103, PAGE 37-39.)
 - 123 = LOT NUMBERS
 - (NR) = NON RADIAL TO STREET CENTERLINE
 - (R) = RADIAL TO STREET CENTERLINE

* DEPRESSED DRIVEWAYS
SECTION 4123.43 OF THE COLUMBUS CITY CODE PROHIBITS DRIVEWAYS DEPRESSED BELOW THE SIDEWALK ELEVATION AT ANY DRIVE WITHIN 20 VERTICAL INCHES OF THE LOW POINTS IN ANY STREET. IF CONSTRUCTION OF A DEPRESSED DRIVEWAY IS PLANNED, BUILDER SHOULD VERIFY THAT THE DRIVEWAY IS NOT AFFECTED BY THIS REGULATION. AT THE TIME THIS PLAT IS RECORDED, ALL LOTS ARE PROHIBITED FROM HAVING DEPRESSED DRIVEWAYS.

⚠ NO VEHICULAR ACCESS TO BE IN EFFECT UNTIL SAID STREET IS EXTENDED BY PLAT OR DEED.



PREPARED BY:

 1500 LAKE SHORE DRIVE
 SUITE 100
 COLUMBUS, OHIO 43204
 (614) 486-4383 1-800-340-2743
 FAX (614) 486-4387

Copyright Reserved
 The Contractor shall verify and be responsible for all dimensions. DO NOT scale the drawing - any errors or omissions shall be reported to Stantec without delay.
 The Copyrights to all designs and drawings are the property of Stantec. Reproduction or use for any purpose other than that authorized by Stantec is forbidden.