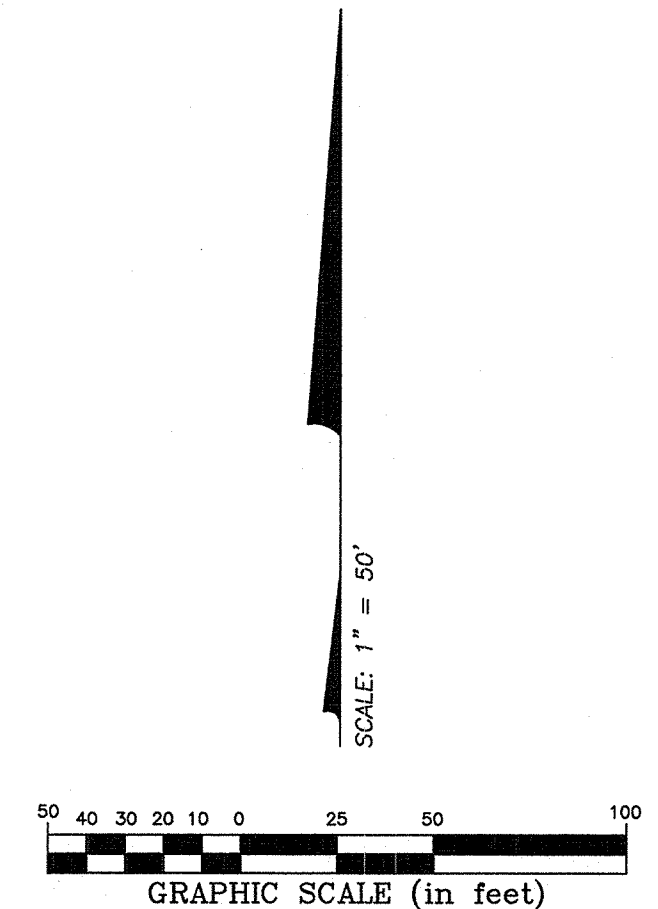
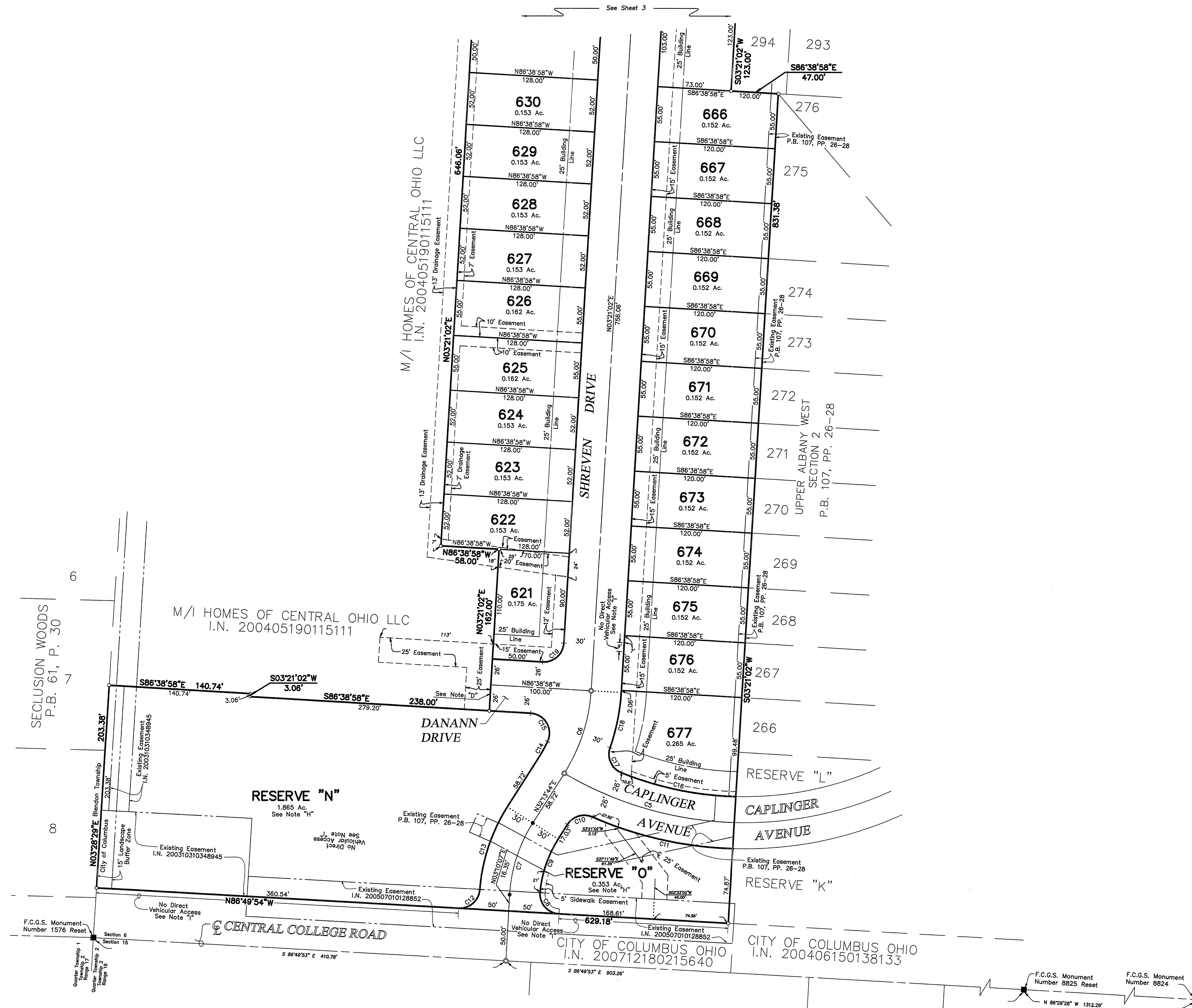


UPPER ALBANY WEST SECTION 6



CURVE NO.	DELTA	RADIUS	LENGTH	CHORD BEARING	CHORD DISTANCE
C1	90°00'00"	250.00'	392.70'	N 48°21'02" E	353.55'
C2	11°53'54"	250.00'	51.92'	N 87°24'05" E	51.82'
C3	78°06'06"	250.00'	340.78'	N 42°24'05" E	315.00'
C4	11°53'54"	250.00'	51.92'	N 02°35'55" W	51.82'
C5	29°08'34"	350.00'	178.02'	S 73°49'02" E	178.11'
C6	28°52'41"	174.60'	88.00'	N 17°47'23" E	87.07'
C7	29°03'37"	150.00'	76.08'	N 17°41'55" E	75.27'
C8	92°05'22"	20.00'	32.15'	N 40°47'13" W	28.80'
C9	26°58'15"	120.00'	56.49'	N 18°44'36" E	55.97'
C10	81°25'51"	20.00'	28.42'	N 72°56'39" E	26.09'
C11	21°55'40"	378.00'	143.90'	S 77°18'16" E	143.02'
C12	88°57'19"	20.00'	31.05'	S 48°41'26" W	28.03'
C13	28°00'57"	180.00'	88.01'	S 18°13'15" W	87.14'
C14	71°2'48"	144.00'	18.21'	S 28°37'19" W	18.19'
C15	111°39'53"	20.00'	38.98'	S 30°49'01" E	33.10'
C16	20°40'17"	324.00'	116.89'	N 78°11'33" W	116.26'
C17	87°04'14"	20.00'	30.39'	N 24°19'17" W	27.55'
C18	15°51'47"	204.60'	56.65'	N 11°16'56" E	56.47'
C19	90°00'00"	20.00'	31.42'	S 48°21'02" W	28.28'
C20	90°00'00"	20.00'	31.42'	S 41°38'58" E	28.28'
C21	90°00'00"	20.00'	31.42'	N 48°21'02" E	28.28'
C22	90°00'00"	20.00'	31.42'	N 41°38'58" W	28.28'
C23	90°00'00"	20.00'	31.42'	S 48°21'02" W	28.28'
C24	90°00'00"	20.00'	31.42'	S 48°21'02" W	28.28'
C25	90°00'00"	20.00'	31.42'	N 41°38'58" W	28.28'
C26	90°00'00"	20.00'	31.42'	S 48°21'02" W	28.28'
C27	81°10'47"	20.00'	28.34'	N 49°08'18" W	26.03'
C28	11°53'54"	224.00'	46.52'	N 02°35'55" W	46.43'
C29	11°53'54"	276.00'	57.32'	S 02°35'55" E	57.21'
C30	81°10'47"	20.00'	28.34'	N 52°02'32" E	26.03'
C31	10°28'41"	280.00'	51.21'	S 67°23'35" W	51.13'
C32	3°04'42"	280.00'	15.04'	N 88°11'19" W	15.04'
C33	10°04'24"	280.00'	49.23'	S 57°07'02" W	49.16'
C34	9°31'29"	280.00'	46.55'	S 47°19'05" W	46.49'
C35	9°54'03"	280.00'	48.38'	S 37°36'20" W	48.32'
C36	9°41'16"	280.00'	47.34'	S 27°46'40" W	47.29'
C37	9°32'07"	280.00'	48.23'	S 18°01'59" W	48.17'
C38	9°44'53"	280.00'	47.64'	S 08°13'29" W	47.58'
C39	17°42'34"	220.00'	68.00'	N 84°29'44" E	67.73'
C40	19°55'56"	220.00'	76.53'	N 65°40'29" E	76.15'
C41	19°55'43"	220.00'	76.52'	N 45°44'40" E	76.14'
C42	19°55'43"	220.00'	76.52'	S 39°49'51" E	76.14'
C43	12°30'03"	220.00'	48.00'	N 03°38'04" E	47.90'
C44	5°55'05"	108.00'	11.16'	N 89°36'30" W	11.15'
C45	24°14'54"	108.00'	45.71'	S 75°18'30" W	45.37'
C46	25°05'44"	108.00'	47.30'	S 50°38'11" W	46.93'
C47	25°21'13"	108.00'	47.79'	S 25°24'43" W	47.40'
C48	9°23'04"	108.00'	17.69'	S 08°02'34" W	17.67'