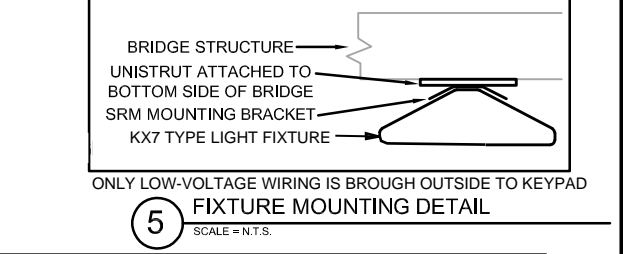
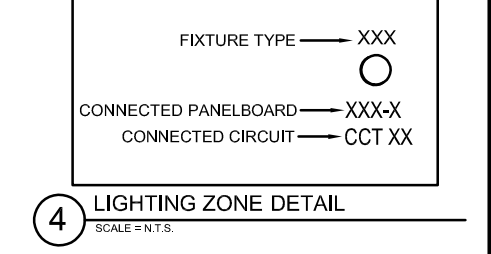
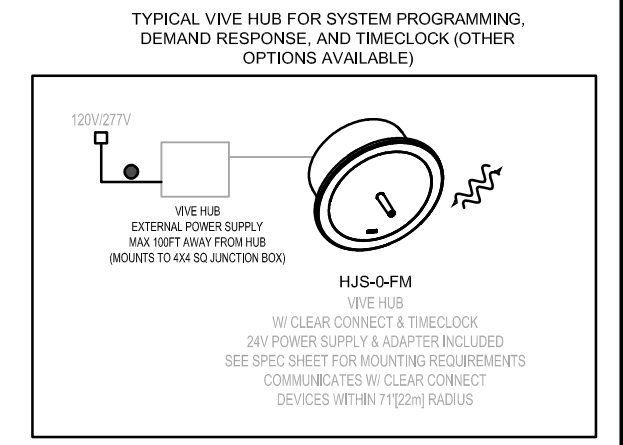
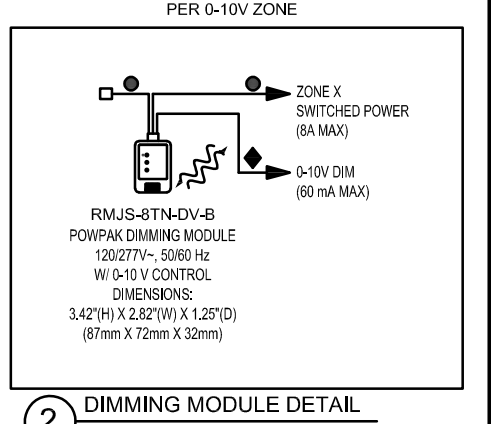
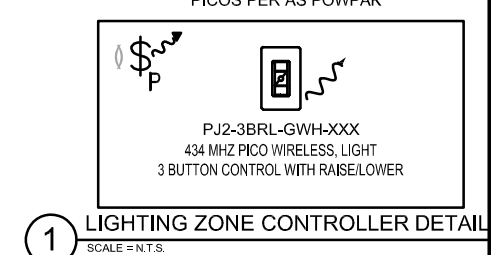
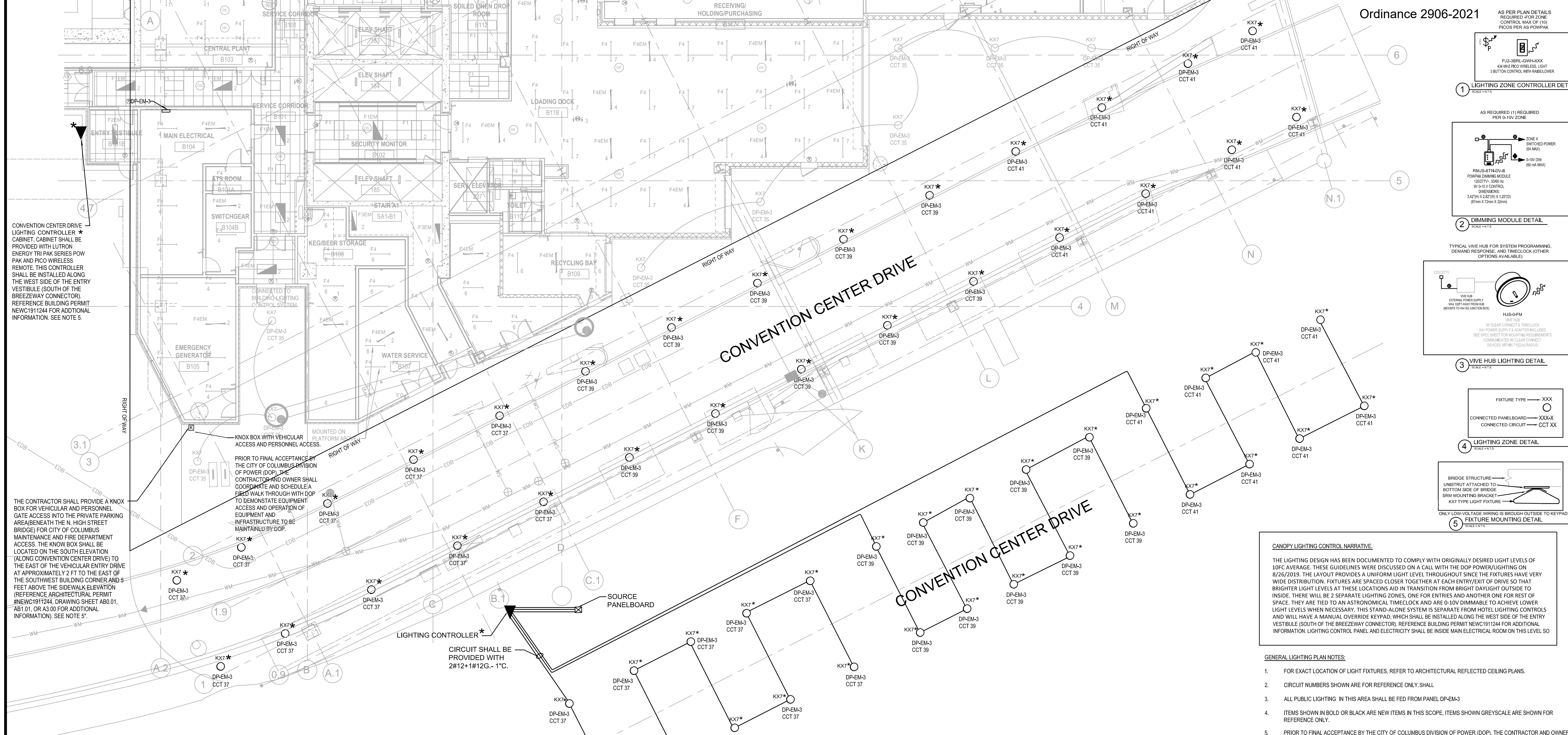


SCALE: 3/32" = 1'-0"



CANOPY LIGHTING CONTROL NARRATIVE

THE LIGHTING DESIGN HAS BEEN DOCUMENTED TO COMPLY WITH ORIGINALLY DESIRED LIGHT LEVELS OF 10FC AVERAGE. THESE GUIDELINES WERE DISCUSSED ON A CALL WITH THE DOP POWER/LIGHTING ON 8/26/2019. THE LAYOUT PROVIDES A UNIFORM LIGHT LEVEL THROUGHOUT SINCE THE FIXTURES HAVE VERY WIDE DISTRIBUTION. FIXTURES ARE SPACED CLOSER TOGETHER AT EACH ENTRY/EXIT OF DRIVE SO THAT BRIGHTER LIGHT LEVELS AT THESE LOCATIONS AID IN TRANSITION FROM BRIGHT DAYLIGHT OUTSIDE TO INSIDE. THERE WILL BE 2 SEPARATE LIGHTING ZONES, ONE FOR ENTRIES AND ANOTHER ONE FOR REST OF SPACE. THEY ARE TIED TO AN ASTRONOMICAL TIMELOCK AND ARE 0-10V DIMMABLE TO ACHIEVE LOWER LIGHT LEVELS WHEN NECESSARY. THIS STAND-ALONE SYSTEM IS SEPARATE FROM HOTEL LIGHTING CONTROLS AND WILL HAVE A MANUAL OVERRIDE KEYPAD, WHICH SHALL BE INSTALLED ALONG THE WEST SIDE OF THE ENTRY VESTIBULE (SOUTH OF THE BREEZEWAY CONNECTOR). REFERENCE BUILDING PERMIT NEWC1911244 FOR ADDITIONAL INFORMATION. LIGHTING CONTROL PANEL AND ELECTRICITY SHALL BE INSIDE MAIN ELECTRICAL ROOM ON THIS LEVEL SO

- GENERAL LIGHTING PLAN NOTES:**
- FOR EXACT LOCATION OF LIGHT FIXTURES, REFER TO ARCHITECTURAL REFLECTED CEILING PLANS.
 - CIRCUIT NUMBERS SHOWN ARE FOR REFERENCE ONLY. SHALL
 - ALL PUBLIC LIGHTING IN THIS AREA SHALL BE FED FROM PANEL DP-EM-3
 - ITEMS SHOWN IN BOLD OR BLACK ARE NEW ITEMS IN THIS SCOPE, ITEMS SHOWN GREYSCALE ARE SHOWN FOR REFERENCE ONLY.
 - PRIOR TO FINAL ACCEPTANCE BY THE CITY OF COLUMBUS DIVISION OF POWER (DOP), THE CONTRACTOR AND OWNER SHALL COORDINATE AND SCHEDULE A FIELD WALK THROUGH WITH DOP TO DEMONSTRATE EQUIPMENT ACCESS AND OPERATION OF EQUIPMENT AND INFRASTRUCTURE TO BE MAINTAINED BY DOP.

6 CIRCUIT SCHEMATIC

PANELBOARD SCHEDULE										PANEL DP-EM-3																			
VOLTAGE:					480 Y/277V, 3PH 4W					NEUTRAL:					100%														
MAIN TYPE:					MCB					GROUND:					EQUIPMENT GROUND														
MAIN CAP:					800A					TOTAL LOAD (KVA):					389554														
MOUNTING:					SURFACE					TOTAL LOAD (AMPS):					495														
LOCATION:					ELECTRICAL ROOM					DESIGN AMPS:					495														
										AIC RATING:										65000									
CXT	DESCRIPTION	TYPE	LOAD VA	CB AMP	PH	CB AMP	LOAD VA	TYPE	DESCRIPTION	CXT	DESCRIPTION	TYPE	LOAD VA	CB AMP	PH	CB AMP	LOAD VA	TYPE	DESCRIPTION	CXT									
1	HPF 7-1	X	10633	60/3	A	100/3	19839	R	SUB-FEED PANEL EPPB1-1	2										2									
3	"	X	10633	"	B	"	18163	R	"	4									"	4									
5	"	X	10633	"	C	"	18163	R	"	6									"	6									
7	HPF 7-2	X	7166	40/3	A	600/3	83031	R	SUB-FEED PANEL EPP2S-	8									"	8									
9	"	X	7166	"	B	"	82531	R	"	10									"	10									
11	"	X	7166	"	C	"	82531	R	"	12									"	12									
13	HPF 8-1	X	10633	60/3	A	201/1	0	S	SPARE	14									"	14									
15	"	X	10633	"	B	201/1	0	S	SPARE	16									"	16									
17	"	X	10633	"	C	201/1	0	S	SPARE	18									"	18									
19	SPARE	S	0	201/1	A	201/1	0	S	SPARE	20									"	20									
21	SPARE	S	0	201/1	B	201/1	0	S	SPARE	22									"	22									
23	SPARE	S	0	201/1	C	201/1	0	S	SPARE	24									"	24									
25	SPARE	S	0	201/1	A	201/1	0	S	SPARE	26									"	26									
27	SPARE	S	0	201/1	B	201/1	0	S	SPARE	28									"	28									
29	SPARE	S	0	201/1	C	201/1	0	S	SPARE	30									"	30									
31	SPARE	S	0	201/1	A	201/1	0	S	SPARE	32									"	32									
33	SPARE	S	0	201/1	B	201/1	0	S	SPARE	34									"	34									
35	LOWER LEVEL ENTRY CANOPY	L	800	201/1	C	201/1	0	S	SPARE	36									"	36									
37	EXTERIOR CANOPY LIGHTING *	L	1200	201/1	A	201/1	0	S	SPARE	38									"	38									
39	EXTERIOR CANOPY LIGHTING *	L	1200	201/1	B	201/1	0	S	SPARE	40									"	40									
41	EXTERIOR CANOPY LIGHTING *	L	1200	201/1	C	201/1	0	Y	SPARE	42									"	42									

* DOP STREET LIGHTING INCLUDED IN SCOPE.

SHEET SYMBOL	DESCRIPTION	FIXTURE	LITHONIA	VCPG-V4-P4-35K-80CRI-T5W-MVOLT-SRM-UPL1-DMG-DNAXD	NATURAL ALUMINUM	X	DESCRIPTION
KX7 *	"TUNNEL" LIGHT *	LAMP	LITHONIA	3500K LED 80 CRI 7597 LM WIDE OPTIC	56W	BY EE	1. FIXTURE SHALL BE SURFACE MOUNTED WITH SRM BRACKET ONTO UNISTRUT TO UNDERSIDE OF BRIDGE. REFER TO DETAIL 5 ON THIS SHEET.
▲	LIGHTING CONTROLLER *	POWER SUPPLY	LITHONIA	0-10V DIM.			1. CONTROLLER ENCLOSURE SHALL NEMA 3R RATED.
K	KNOX BOX						

* ITEMS DENOTED WITH ASTERISK SHALL BE OPERATED AND MAINTAINED BY THE CITY OF COLUMBUS DIVISION OF POWER. REFER TO THE MAINTENANCE AGREEMENT ADMINISTERED BY THE DIVISION OF POWER FOR ADDITIONAL INFORMATION.

NOTE: THESE QUANTITIES HAVE BEEN PROVIDED AS AN ESTIMATE TO THE SCOPE OF WORK. THE CONTRACTOR SHALL BE SOLELY RESPONSIBLE TO EVALUATE THE COMPLETE PROJECT AS DETAILED IN THE NOTES, PLANS, AND SPECIFICATION NECESSARY FOR THE COMPLETION OF THE PLAN IMPROVEMENTS AND SUBMIT THE TOTAL PROJECT COST ACCORDINGLY.

ITEM	PUBLIC R/W QUANTITY	UNIT	DESCRIPTION (DOP TUNNEL CANOPY) LIGHTING
001	28	EA	UNDER BRIDGE STREET LIGHTING, TYPE KX7 (AS PER PLAN)
002	1	EA	STREET LIGHTING, LIGHTING CONTROLLER (AS PER PLAN)
003	1	EA	LIGHTING CONTROLLER ACCESS BOX, KNOX BOX (AS PER PLAN)

CONVENTION CENTER DRIVE LIGHTING CONTROLLER * CABINET SHALL BE PROVIDED WITH LUTRON ENERGY TRI PAK SERIES POW PAK AND PICO WIRELESS REMOTE. THIS CONTROLLER SHALL BE INSTALLED ALONG THE WEST SIDE OF THE ENTRY VESTIBULE (SOUTH OF THE BREEZEWAY CONNECTOR). REFERENCE BUILDING PERMIT NEWC1911244 FOR ADDITIONAL INFORMATION. SEE NOTE 5.

THE CONTRACTOR SHALL PROVIDE A KNOX BOX FOR VEHICULAR AND PERSONNEL GATE ACCESS INTO THE PRIVATE PARKING AREA (BENEATH THE N. HIGH STREET BRIDGE) FOR CITY OF COLUMBUS MAINTENANCE AND FIRE DEPARTMENT ACCESS. THE KNOX BOX SHALL BE LOCATED ON THE SOUTH ELEVATION (ALONG CONVENTION CENTER DRIVE) TO THE EAST OF THE VEHICULAR ENTRY DRIVE AT APPROXIMATELY 2 FT TO THE EAST OF THE SOUTHWEST BUILDING CORNER AND 5 FEET ABOVE THE SIDEWALK ELEVATION (REFERENCE ARCHITECTURAL PERMIT #NEWC1911244, DRAWING SHEET AB0.01, AB1.01, OR A3.00 FOR ADDITIONAL INFORMATION). SEE NOTE 5.

KNOX BOX WITH VEHICULAR ACCESS AND PERSONNEL ACCESS. MOUNTED ON PLATFORM ABOVE RIGHT OF WAY.

PRIOR TO FINAL ACCEPTANCE BY THE CITY OF COLUMBUS DIVISION OF POWER (DOP), THE CONTRACTOR AND OWNER SHALL COORDINATE AND SCHEDULE A FIELD WALK THROUGH WITH DOP TO DEMONSTRATE EQUIPMENT ACCESS AND OPERATION OF EQUIPMENT AND INFRASTRUCTURE TO BE MAINTAINED BY DOP.