

TEMPORARY EASEMENT T-5
0.243 ACRES

Situated in the State of Ohio, County of Franklin, City of Columbus, and located in Section 2, Township 2, Range 17, United States Military Lands, also being a part of a 4.156 acres tract shown as Reserve "A" in Cooper Ridge as shown of record Plat Book 53, Page 18 the same being Tract II as described in a deed to Snyder Smith Partnership I in Official Record 11800G16 on file in the Recorder's Office of Franklin County, Ohio and being particularly described as follows:

Beginning for reference at the northwest corner of said Reserve "A", said point also being the southeast corner of a 3.709 acres tract as described in a deed to Lauffer Ravines, LLC in Instrument No. 200406180140650, said point also lies in the northerly limited access right of way line of Interstate Highway 270;

Thence **N 37 degrees 15 minutes 39 seconds E** a distance of **122.31 feet** with a southerly line of said Lauffer Ravines tract and the north line of said Grantor's tract to the **TRUE POINT OF BEGINNING**;

Thence, continue **N 37 degrees 15 minutes 39 seconds E** with the southerly line of said Lauffer Ravines tract and the north line of said Grantor's tract a distance of **18.41 feet** to an angle point;

Thence **N 80 degrees 32 minutes 16 seconds E** a distance of **108.27 feet** with the southerly line of said Lauffer Ravines tract and with the northerly line of said Reserve "A" to a point;

Thence **N 72 degrees 52 minutes 31 seconds E** a distance of **250.54 feet** with the southerly line of said Lauffer Ravines tract and with the northerly line of said Reserve "A" to an angle point;

Thence **S 17 degrees 26 minutes 50 seconds E** a distance of **34.51 feet** crossing said Reserve "A" to a point;

Thence **S 72 degrees 33 minutes 10 seconds W** a distance of **194.63 feet** to a point;

Thence **S 85 degrees 18 minutes 23 seconds W** a distance of **182.67 feet** to the **TRUE POINT OF BEGINNING**, containing 0.243 acre of land, more or less.

The above described area contains a total of **0.243 acres** within Franklin County Auditor's Parcel Number 600-176226, which includes 0.000 acres in the present road occupied.

Grantor claims title by Instrument recorded in Official Record 11800G16, in the records of Franklin County, Ohio.

Bearings used in this description are based on Ohio State Plane Coordinates, South Zone, NAD 83.

This description was prepared from existing records and does not represent a field survey.

Resource International, Inc.

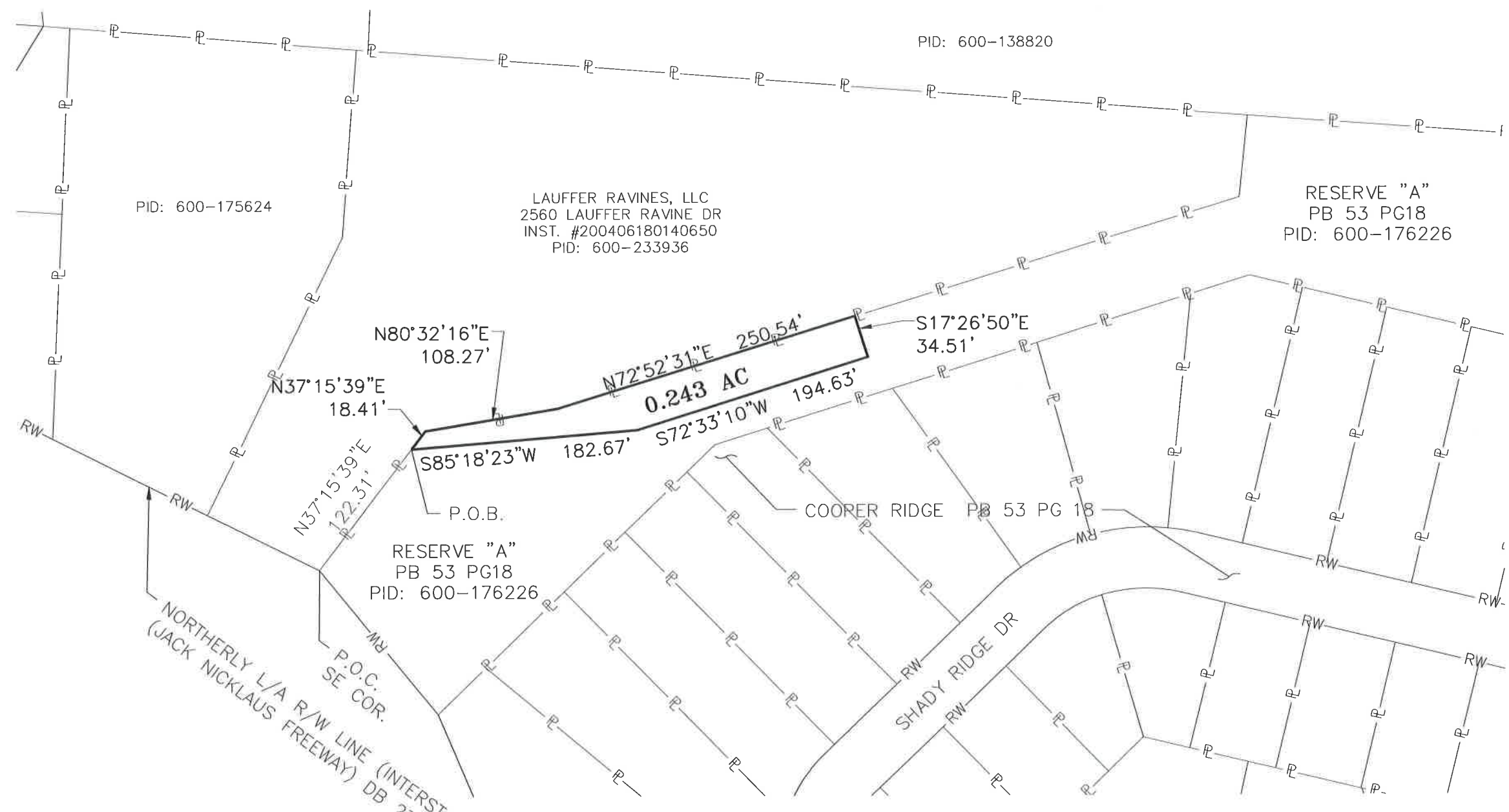
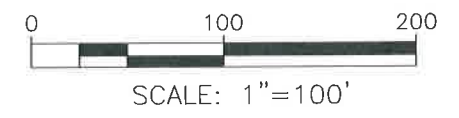
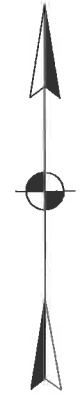
Mark S. Ward 9-13-13

Mark S. Ward, P.S.

Professional Surveyor No. S-7514



**PLAT OF 0.243 ACRES
LOCATED IN
SEC 2, TWP-2, R-17, USML
CITY OF COLUMBUS
FRANKLIN COUNTY, OHIO**



PID: 600-175624

LAUFFER RAVINES, LLC
2560 LAUFFER RAVINE DR
INST. #200406180140650
PID: 600-233936

RESERVE "A"
PB 53 PG 18
PID: 600-176226

RESERVE "A"
PB 53 PG 18
PID: 600-176226

COOPER RIDGE PB 53 PG 18


SHADY RIDGE DR

NORTHERLY L/A R/W LINE (INTERSTATE 270)
(JACK NICKLAUS FREEWAY) DB 2717 PG 202

NOTE:
THIS PLAT PREPARED FROM RECORD DOCUMENTS



PLATTED BY:
RESOURCE INTERNATIONAL, INC.
Mark S. Ward 9-13-13
MARK S. WARD P.S. No., S-7514 DATE

DESCRIPTION				
TEMPORARY EASEMENT T-5				
LOCATION				
SHADY RIDGE DRIVE COLUMBUS, OH				
CLIENT				
CHESTER ENGINEERS 88 E BROAD STREET				
 RESOURCE INTERNATIONAL, INC. 6350 PRESIDENTIAL GATEWAY COLUMBUS, OHIO 43231				
DRAWN BY:	CHECKED BY:	CREW CHIEF:	PROJECT No.	SHEET
EJG	MSW		W09-124	1 OF 1
SCALE:	DATE:			
1" = 100'	7-23-13			