

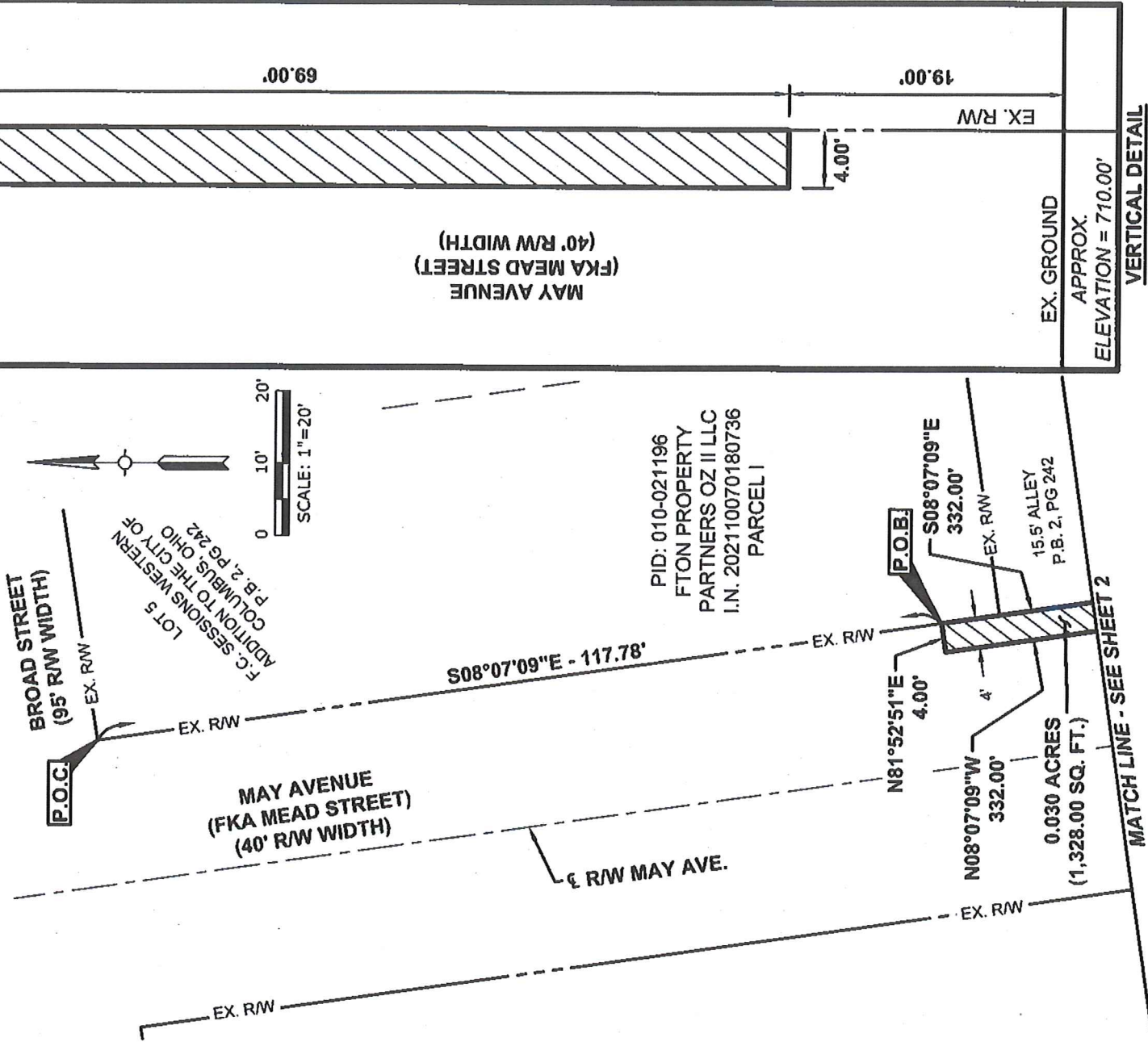
# STATE OF OHIO, COUNTY OF FRANKLIN, CITY OF COLUMBUS VIRGINIA MILITARY SURVEY 1393

**BASIS OF BEARINGS**

Bearings described hereon are measured from Grid North, referenced to the Ohio State Plane Coordinate System (South Zone) and the North American Datum of 1983 (2011 Adjustment), as established utilizing a GPS survey and an NGS OPUS solution.

**BASIS OF ELEVATION**

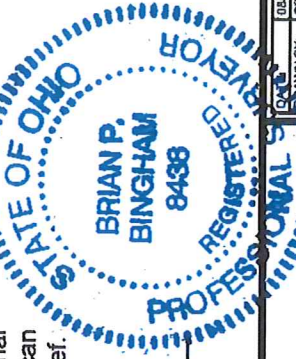
Elevations are referenced to the North American Vertical Datum of 1988, as established utilizing a level circuit originating on Franklin County Bench Mark 132 (Elevation: 718.721 feet).



**VERTICAL DETAIL**  
(SCALE: 1" = 10')

This easement exhibit was prepared by Brian P. Bingham, Registered Professional Surveyor No. 8438, is based on an actual field survey performed by American Structurepoint, Inc., and is true and correct to the best of my knowledge and belief.

American Structurepoint, Inc.  
*Brian P. Bingham*  
 Brian P. Bingham  
 Registered Professional Surveyor No. 8438  
 Date: 6/23/2022



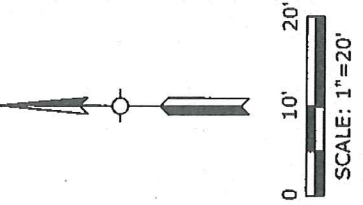
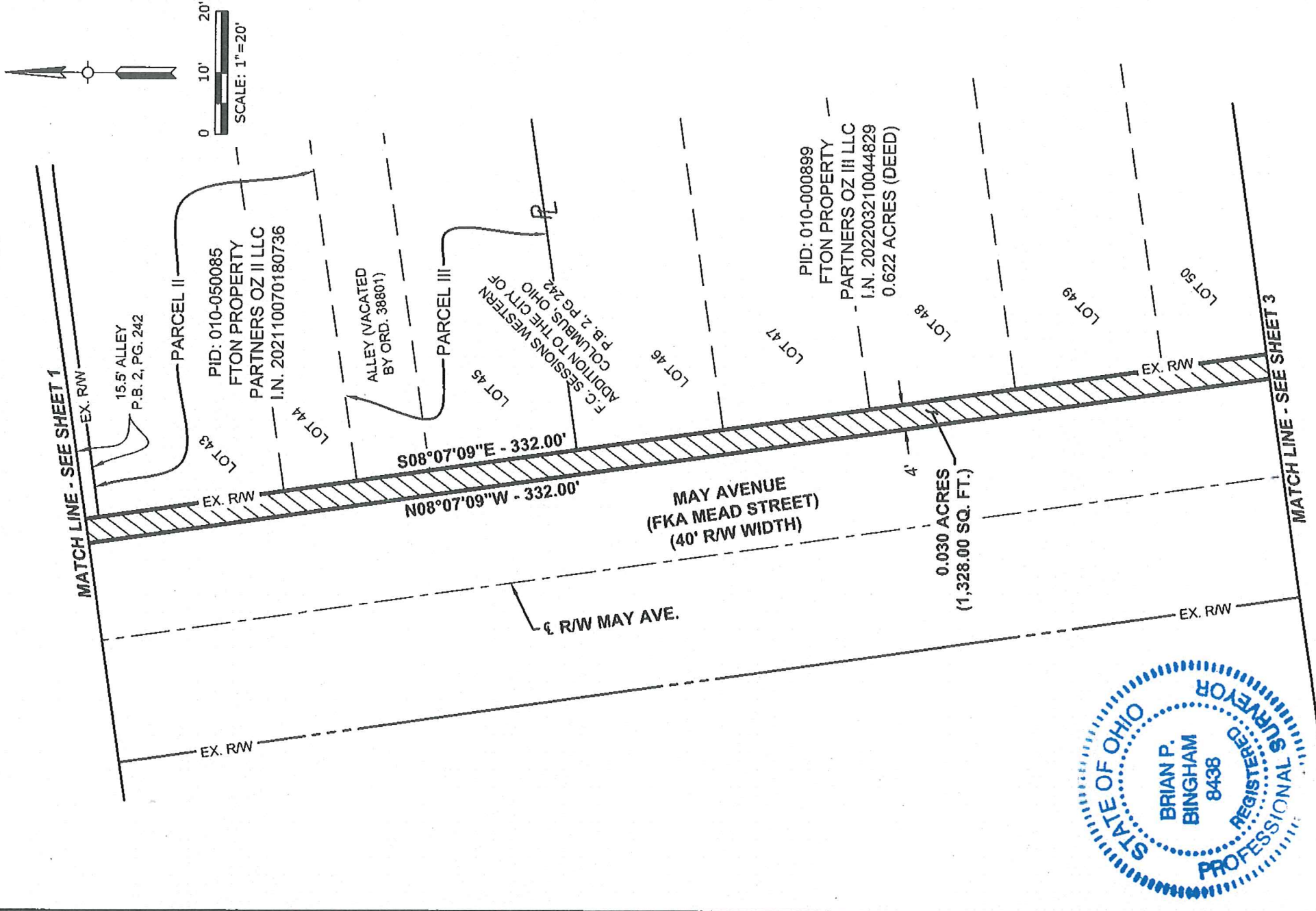
**KAUFMAN DEVELOPMENT, LLC**



0.030 ACRE (1,328 SQ. FT.) AERIAL ENCROACHMENT EASEMENT FOR  
**GRAVITY III**  
 CITY OF COLUMBUS, FRANKLIN COUNTY, OHIO

DATE: 06/19/2022  
 DRAWN BY: CRR & MWN  
 CHECKED BY: BBP  
 JOB NUMBER: 2021.01892

STATE OF OHIO, COUNTY OF FRANKLIN, CITY OF COLUMBUS  
 VIRGINIA MILITARY SURVEY 1393



DATE:	08/19/2022
DRAWN BY:	CRH & MWM
CHECKED BY:	BPB
JOB NUMBER:	202107592

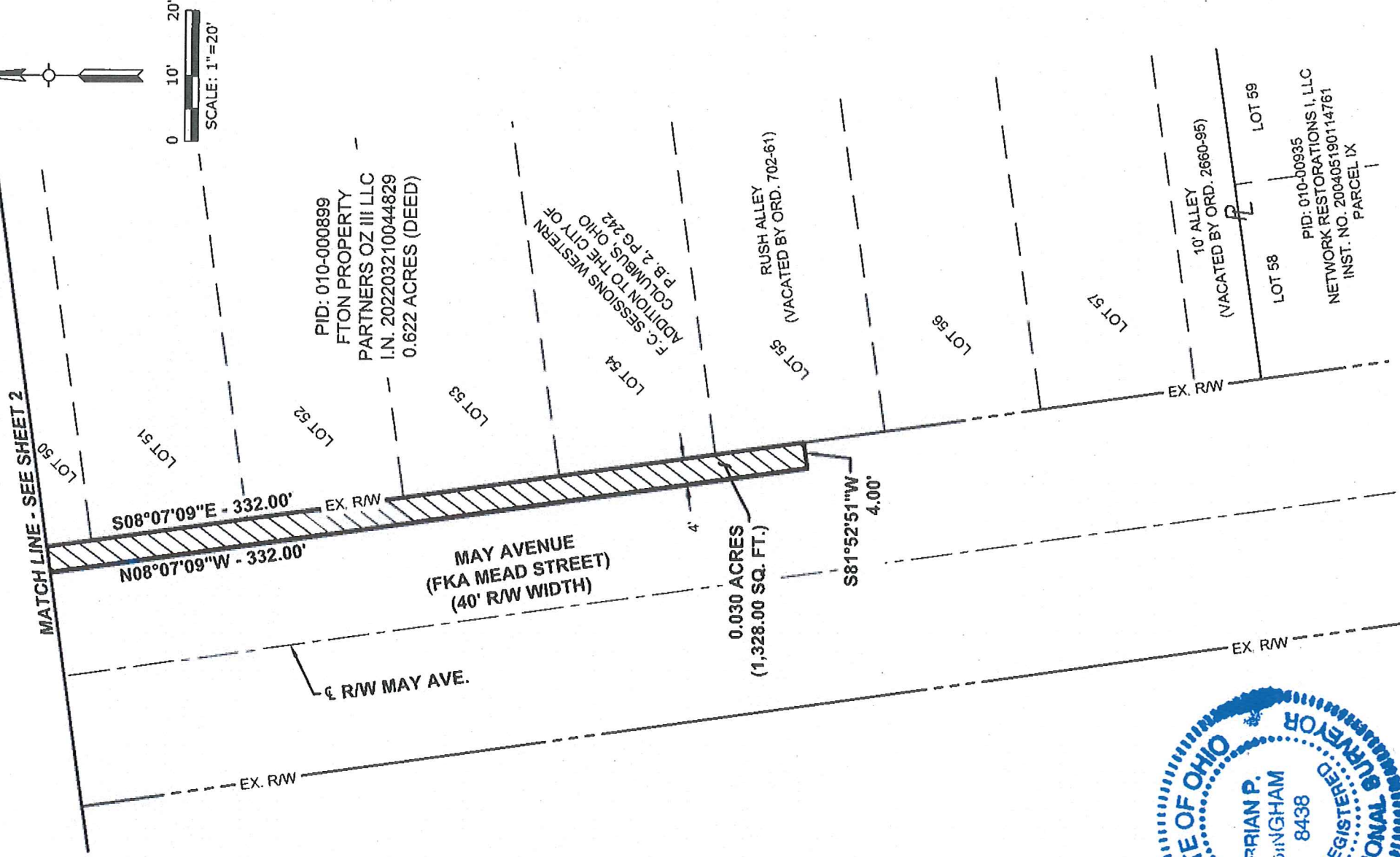
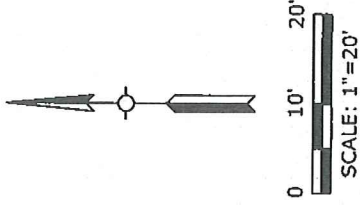
AMERICA'S  
**STRUCTUREPOINT**<sup>INC</sup>

2620 Corporate Exchange Drive | Suite 300  
 Columbus, OH 43228 | TEL 614.891.2233 | FAX 614.891.2236  
 www.structurepoint.com

0.030 ACRE (1,328 SQ. FT.) AERIAL ENCROACHMENT EASEMENT  
 FOR  
**GRAVITY III**  
 CITY OF COLUMBUS, FRANKLIN COUNTY, OHIO

**KAUFMAN  
 DEVELOPMENT,  
 LLC**

STATE OF OHIO, COUNTY OF FRANKLIN, CITY OF COLUMBUS  
 VIRGINIA MILITARY SURVEY 1393



DATE	08/19/2022
DRAWN BY	CRH & MPM
CHECKED BY	IBP
JOB NUMBER	2021.01952

3 of 3

0.030 ACRE (1,328 SQ. FT.) AERIAL ENCROACHMENT EASEMENT  
 FOR  
**GRAVITY III**  
 CITY OF COLUMBUS, FRANKLIN COUNTY, OHIO

**STRUCTUREPOINT**  
 A WE P.L.L.C.  
 2550 Corporate Exchange Drive | Suite 300  
 Columbus, Ohio 43221  
 TEL 614.901.2225 | FAX 614.901.2200  
 www.structurepoint.com

**KAUFMAN  
 DEVELOPMENT,  
 LLC**