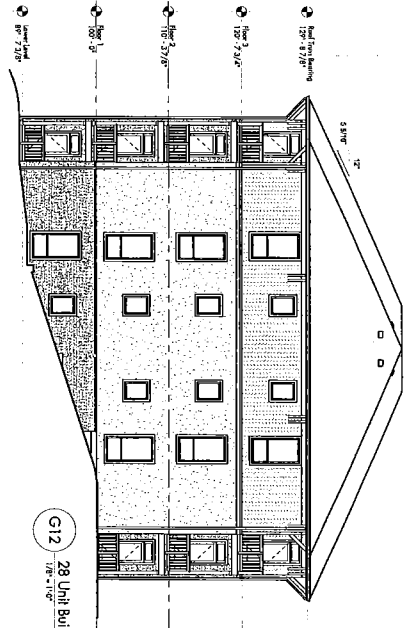


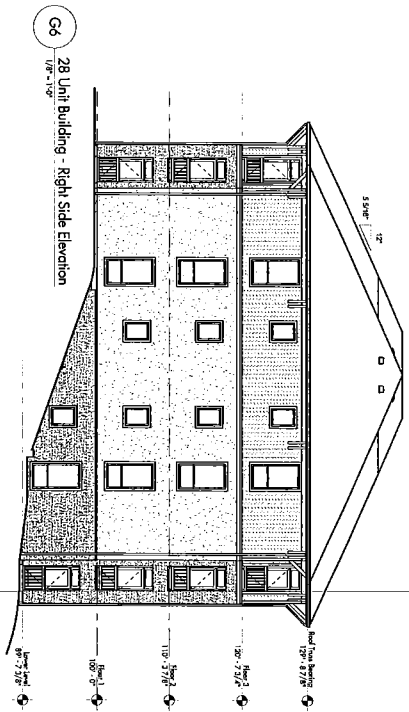
SITE STATISTICS:
 TOTAL ACRES: 111.1 ACRES
 TOTAL SQUARE FEET: 4,800,000
 PARKING REQUIRED: 285 SPACES
 SURFACE PARKING (P/HE): 225 SPACES
 UNDERGROUND: 60 SPACES
 (H) REGULAR STALLS: 7 SPACES
 (H) REGULAR STALLS: 225 SPACES
 CROSS SECTION: 113.7' UNITS ACRE
 225 SPACES (USE UNITS X 1.8)

SCOTO ENTER

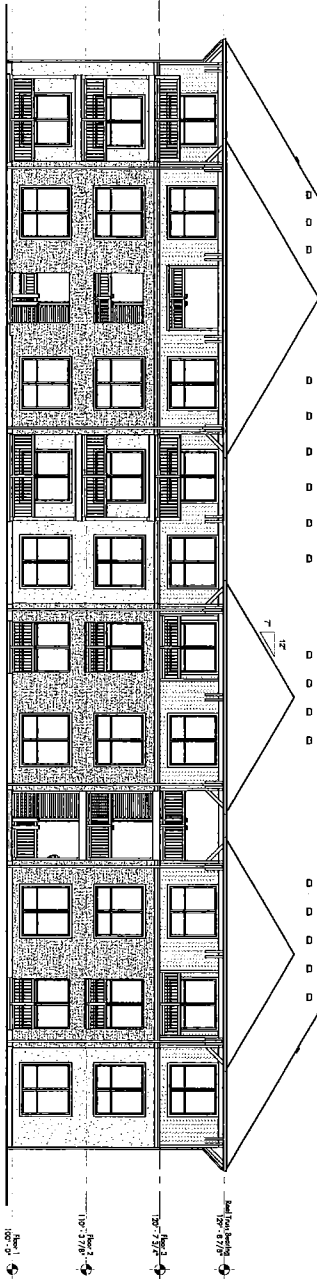
BUFFER PLANTINGS:
 EVERGREEN TREE OPTIONS:
 DECIDUOUS TREE OPTIONS:
 DECIDUOUS SHADE OPTIONS:
 1. 1' 1/2" DBH
 2. 2" DBH
 3. 3" DBH
 4. 4" DBH
 5. 5" DBH
 6. 6" DBH
 7. 7" DBH
 8. 8" DBH
 9. 9" DBH
 10. 10" DBH
 11. 11" DBH
 12. 12" DBH
 13. 13" DBH
 14. 14" DBH
 15. 15" DBH
 16. 16" DBH
 17. 17" DBH
 18. 18" DBH
 19. 19" DBH
 20. 20" DBH
 21. 21" DBH
 22. 22" DBH
 23. 23" DBH
 24. 24" DBH
 25. 25" DBH
 26. 26" DBH
 27. 27" DBH
 28. 28" DBH
 29. 29" DBH
 30. 30" DBH
 31. 31" DBH
 32. 32" DBH
 33. 33" DBH
 34. 34" DBH
 35. 35" DBH
 36. 36" DBH
 37. 37" DBH
 38. 38" DBH
 39. 39" DBH
 40. 40" DBH
 41. 41" DBH
 42. 42" DBH
 43. 43" DBH
 44. 44" DBH
 45. 45" DBH
 46. 46" DBH
 47. 47" DBH
 48. 48" DBH
 49. 49" DBH
 50. 50" DBH
 51. 51" DBH
 52. 52" DBH
 53. 53" DBH
 54. 54" DBH
 55. 55" DBH
 56. 56" DBH
 57. 57" DBH
 58. 58" DBH
 59. 59" DBH
 60. 60" DBH
 61. 61" DBH
 62. 62" DBH
 63. 63" DBH
 64. 64" DBH
 65. 65" DBH
 66. 66" DBH
 67. 67" DBH
 68. 68" DBH
 69. 69" DBH
 70. 70" DBH
 71. 71" DBH
 72. 72" DBH
 73. 73" DBH
 74. 74" DBH
 75. 75" DBH
 76. 76" DBH
 77. 77" DBH
 78. 78" DBH
 79. 79" DBH
 80. 80" DBH
 81. 81" DBH
 82. 82" DBH
 83. 83" DBH
 84. 84" DBH
 85. 85" DBH
 86. 86" DBH
 87. 87" DBH
 88. 88" DBH
 89. 89" DBH
 90. 90" DBH
 91. 91" DBH
 92. 92" DBH
 93. 93" DBH
 94. 94" DBH
 95. 95" DBH
 96. 96" DBH
 97. 97" DBH
 98. 98" DBH
 99. 99" DBH
 100. 100" DBH
 101. 101" DBH
 102. 102" DBH
 103. 103" DBH
 104. 104" DBH
 105. 105" DBH
 106. 106" DBH
 107. 107" DBH
 108. 108" DBH
 109. 109" DBH
 110. 110" DBH
 111. 111" DBH
 112. 112" DBH
 113. 113" DBH
 114. 114" DBH
 115. 115" DBH
 116. 116" DBH
 117. 117" DBH
 118. 118" DBH
 119. 119" DBH
 120. 120" DBH
 121. 121" DBH
 122. 122" DBH
 123. 123" DBH
 124. 124" DBH
 125. 125" DBH
 126. 126" DBH
 127. 127" DBH
 128. 128" DBH
 129. 129" DBH
 130. 130" DBH
 131. 131" DBH
 132. 132" DBH
 133. 133" DBH
 134. 134" DBH
 135. 135" DBH
 136. 136" DBH
 137. 137" DBH
 138. 138" DBH
 139. 139" DBH
 140. 140" DBH
 141. 141" DBH
 142. 142" DBH
 143. 143" DBH
 144. 144" DBH
 145. 145" DBH
 146. 146" DBH
 147. 147" DBH
 148. 148" DBH
 149. 149" DBH
 150. 150" DBH
 151. 151" DBH
 152. 152" DBH
 153. 153" DBH
 154. 154" DBH
 155. 155" DBH
 156. 156" DBH
 157. 157" DBH
 158. 158" DBH
 159. 159" DBH
 160. 160" DBH
 161. 161" DBH
 162. 162" DBH
 163. 163" DBH
 164. 164" DBH
 165. 165" DBH
 166. 166" DBH
 167. 167" DBH
 168. 168" DBH
 169. 169" DBH
 170. 170" DBH
 171. 171" DBH
 172. 172" DBH
 173. 173" DBH
 174. 174" DBH
 175. 175" DBH
 176. 176" DBH
 177. 177" DBH
 178. 178" DBH
 179. 179" DBH
 180. 180" DBH
 181. 181" DBH
 182. 182" DBH
 183. 183" DBH
 184. 184" DBH
 185. 185" DBH
 186. 186" DBH
 187. 187" DBH
 188. 188" DBH
 189. 189" DBH
 190. 190" DBH
 191. 191" DBH
 192. 192" DBH
 193. 193" DBH
 194. 194" DBH
 195. 195" DBH
 196. 196" DBH
 197. 197" DBH
 198. 198" DBH
 199. 199" DBH
 200. 200" DBH
 201. 201" DBH
 202. 202" DBH
 203. 203" DBH
 204. 204" DBH
 205. 205" DBH
 206. 206" DBH
 207. 207" DBH
 208. 208" DBH
 209. 209" DBH
 210. 210" DBH
 211. 211" DBH
 212. 212" DBH
 213. 213" DBH
 214. 214" DBH
 215. 215" DBH
 216. 216" DBH
 217. 217" DBH
 218. 218" DBH
 219. 219" DBH
 220. 220" DBH
 221. 221" DBH
 222. 222" DBH
 223. 223" DBH
 224. 224" DBH
 225. 225" DBH
 226. 226" DBH
 227. 227" DBH
 228. 228" DBH
 229. 229" DBH
 230. 230" DBH
 231. 231" DBH
 232. 232" DBH
 233. 233" DBH
 234. 234" DBH
 235. 235" DBH
 236. 236" DBH
 237. 237" DBH
 238. 238" DBH
 239. 239" DBH
 240. 240" DBH
 241. 241" DBH
 242. 242" DBH
 243. 243" DBH
 244. 244" DBH
 245. 245" DBH
 246. 246" DBH
 247. 247" DBH
 248. 248" DBH
 249. 249" DBH
 250. 250" DBH
 251. 251" DBH
 252. 252" DBH
 253. 253" DBH
 254. 254" DBH
 255. 255" DBH
 256. 256" DBH
 257. 257" DBH
 258. 258" DBH
 259. 259" DBH
 260. 260" DBH
 261. 261" DBH
 262. 262" DBH
 263. 263" DBH
 264. 264" DBH
 265. 265" DBH
 266. 266" DBH
 267. 267" DBH
 268. 268" DBH
 269. 269" DBH
 270. 270" DBH
 271. 271" DBH
 272. 272" DBH
 273. 273" DBH
 274. 274" DBH
 275. 275" DBH
 276. 276" DBH
 277. 277" DBH
 278. 278" DBH
 279. 279" DBH
 280. 280" DBH
 281. 281" DBH
 282. 282" DBH
 283. 283" DBH
 284. 284" DBH
 285. 285" DBH
 286. 286" DBH
 287. 287" DBH
 288. 288" DBH
 289. 289" DBH
 290. 290" DBH
 291. 291" DBH
 292. 292" DBH
 293. 293" DBH
 294. 294" DBH
 295. 295" DBH
 296. 296" DBH
 297. 297" DBH
 298. 298" DBH
 299. 299" DBH
 300. 300" DBH
 301. 301" DBH
 302. 302" DBH
 303. 303" DBH
 304. 304" DBH
 305. 305" DBH
 306. 306" DBH
 307. 307" DBH
 308. 308" DBH
 309. 309" DBH
 310. 310" DBH
 311. 311" DBH
 312. 312" DBH
 313. 313" DBH
 314. 314" DBH
 315. 315" DBH
 316. 316" DBH
 317. 317" DBH
 318. 318" DBH
 319. 319" DBH
 320. 320" DBH
 321. 321" DBH
 322. 322" DBH
 323. 323" DBH
 324. 324" DBH
 325. 325" DBH
 326. 326" DBH
 327. 327" DBH
 328. 328" DBH
 329. 329" DBH
 330. 330" DBH
 331. 331" DBH
 332. 332" DBH
 333. 333" DBH
 334. 334" DBH
 335. 335" DBH
 336. 336" DBH
 337. 337" DBH
 338. 338" DBH
 339. 339" DBH
 340. 340" DBH
 341. 341" DBH
 342. 342" DBH
 343. 343" DBH
 344. 344" DBH
 345. 345" DBH
 346. 346" DBH
 347. 347" DBH
 348. 348" DBH
 349. 349" DBH
 350. 350" DBH
 351. 351" DBH
 352. 352" DBH
 353. 353" DBH
 354. 354" DBH
 355. 355" DBH
 356. 356" DBH
 357. 357" DBH
 358. 358" DBH
 359. 359" DBH
 360. 360" DBH
 361. 361" DBH
 362. 362" DBH
 363. 363" DBH
 364. 364" DBH
 365. 365" DBH
 366. 366" DBH
 367. 367" DBH
 368. 368" DBH
 369. 369" DBH
 370. 370" DBH
 371. 371" DBH
 372. 372" DBH
 373. 373" DBH
 374. 374" DBH
 375. 375" DBH
 376. 376" DBH
 377. 377" DBH
 378. 378" DBH
 379. 379" DBH
 380. 380" DBH
 381. 381" DBH
 382. 382" DBH
 383. 383" DBH
 384. 384" DBH
 385. 385" DBH
 386. 386" DBH
 387. 387" DBH
 388. 388" DBH
 389. 389" DBH
 390. 390" DBH
 391. 391" DBH
 392. 392" DBH
 393. 393" DBH
 394. 394" DBH
 395. 395" DBH
 396. 396" DBH
 397. 397" DBH
 398. 398" DBH
 399. 399" DBH
 400. 400" DBH
 401. 401" DBH
 402. 402" DBH
 403. 403" DBH
 404. 404" DBH
 405. 405" DBH
 406. 406" DBH
 407. 407" DBH
 408. 408" DBH
 409. 409" DBH
 410. 410" DBH
 411. 411" DBH
 412. 412" DBH
 413. 413" DBH
 414. 414" DBH
 415. 415" DBH
 416. 416" DBH
 417. 417" DBH
 418. 418" DBH
 419. 419" DBH
 420. 420" DBH
 421. 421" DBH
 422. 422" DBH
 423. 423" DBH
 424. 424" DBH
 425. 425" DBH
 426. 426" DBH
 427. 427" DBH
 428. 428" DBH
 429. 429" DBH
 430. 430" DBH
 431. 431" DBH
 432. 432" DBH
 433. 433" DBH
 434. 434" DBH
 435. 435" DBH
 436. 436" DBH
 437. 437" DBH
 438. 438" DBH
 439. 439" DBH
 440. 440" DBH
 441. 441" DBH
 442. 442" DBH
 443. 443" DBH
 444. 444" DBH
 445. 445" DBH
 446. 446" DBH
 447. 447" DBH
 448. 448" DBH
 449. 449" DBH
 450. 450" DBH
 451. 451" DBH
 452. 452" DBH
 453. 453" DBH
 454. 454" DBH
 455. 455" DBH
 456. 456" DBH
 457. 457" DBH
 458. 458" DBH
 459. 459" DBH
 460. 460" DBH
 461. 461" DBH
 462. 462" DBH
 463. 463" DBH
 464. 464" DBH
 465. 465" DBH
 466. 466" DBH
 467. 467" DBH
 468. 468" DBH
 469. 469" DBH
 470. 470" DBH
 471. 471" DBH
 472. 472" DBH
 473. 473" DBH
 474. 474" DBH
 475. 475" DBH
 476. 476" DBH
 477. 477" DBH
 478. 478" DBH
 479. 479" DBH
 480. 480" DBH
 481. 481" DBH
 482. 482" DBH
 483. 483" DBH
 484. 484" DBH
 485. 485" DBH
 486. 486" DBH
 487. 487" DBH
 488. 488" DBH
 489. 489" DBH
 490. 490" DBH
 491. 491" DBH
 492. 492" DBH
 493. 493" DBH
 494. 494" DBH
 495. 495" DBH
 496. 496" DBH
 497. 497" DBH
 498. 498" DBH
 499. 499" DBH
 500. 500" DBH
 501. 501" DBH
 502. 502" DBH
 503. 503" DBH
 504. 504" DBH
 505. 505" DBH
 506. 506" DBH
 507. 507" DBH
 508. 508" DBH
 509. 509" DBH
 510. 510" DBH
 511. 511" DBH
 512. 512" DBH
 513. 513" DBH
 514. 514" DBH
 515. 515" DBH
 516. 516" DBH
 517. 517" DBH
 518. 518" DBH
 519. 519" DBH
 520. 520" DBH
 521. 521" DBH
 522. 522" DBH
 523. 523" DBH
 524. 524" DBH
 525. 525" DBH
 526. 526" DBH
 527. 527" DBH
 528. 528" DBH
 529. 529" DBH
 530. 530" DBH
 531. 531" DBH
 532. 532" DBH
 533. 533" DBH
 534. 534" DBH
 535. 535" DBH
 536. 536" DBH
 537. 537" DBH
 538. 538" DBH
 539. 539" DBH
 540. 540" DBH
 541. 541" DBH
 542. 542" DBH
 543. 543" DBH
 544. 544" DBH
 545. 545" DBH
 546. 546" DBH
 547. 547" DBH
 548. 548" DBH
 549. 549" DBH
 550. 550" DBH
 551. 551" DBH
 552. 552" DBH
 553. 553" DBH
 554. 554" DBH
 555. 555" DBH
 556. 556" DBH
 557. 557" DBH
 558. 558" DBH
 559. 559" DBH
 560. 560" DBH
 561. 561" DBH
 562. 562" DBH
 563. 563" DBH
 564. 564" DBH
 565. 565" DBH
 566. 566" DBH
 567. 567" DBH
 568. 568" DBH
 569. 569" DBH
 570. 570" DBH
 571. 571" DBH
 572. 572" DBH
 573. 573" DBH
 574. 574" DBH
 575. 575" DBH
 576. 576" DBH
 577. 577" DBH
 578. 578" DBH
 579. 579" DBH
 580. 580" DBH
 581. 581" DBH
 582. 582" DBH
 583. 583" DBH
 584. 584" DBH
 585. 585" DBH
 586. 586" DBH
 587. 587" DBH
 588. 588" DBH
 589. 589" DBH
 590. 590" DBH
 591. 591" DBH
 592. 592" DBH
 593. 593" DBH
 594. 594" DBH
 595. 595" DBH
 596. 596" DBH
 597. 597" DBH
 598. 598" DBH
 599. 599" DBH
 600. 600" DBH
 601. 601" DBH
 602. 602" DBH
 603. 603" DBH
 604. 604" DBH
 605. 605" DBH
 606. 606" DBH
 607. 607" DBH
 608. 608" DBH
 609. 609" DBH
 610. 610" DBH
 611. 611" DBH
 612. 612" DBH
 613. 613" DBH
 614. 614" DBH
 615. 615" DBH
 616. 616" DBH
 617. 617" DBH
 618. 618" DBH
 619. 619" DBH
 620. 620" DBH
 621. 621" DBH
 622. 622" DBH
 623. 623" DBH
 624. 624" DBH
 625. 625" DBH
 626. 626" DBH
 627. 627" DBH
 628. 628" DBH
 629. 629" DBH
 630. 630" DBH
 631. 631" DBH
 632. 632" DBH
 633. 633" DBH
 634. 634" DBH
 635. 635" DBH
 636. 636" DBH
 637. 637" DBH
 638. 638" DBH
 639. 639" DBH
 640. 640" DBH
 641. 641" DBH
 642. 642" DBH
 643. 643" DBH
 644. 644" DBH
 645. 645" DBH
 646. 646" DBH
 647. 647" DBH
 648. 648" DBH
 649. 649" DBH
 650. 650" DBH
 651. 651" DBH
 652. 652" DBH
 653. 653" DBH
 654. 654" DBH
 655. 655" DBH
 656. 656" DBH
 657. 657" DBH
 658. 658" DBH
 659. 659" DBH
 660. 660" DBH
 661. 661" DBH
 662. 662" DBH
 663. 663" DBH
 664. 664" DBH
 665. 665" DBH
 666. 666" DBH
 667. 667" DBH
 668. 668" DBH
 669. 669" DBH
 670. 670" DBH
 671. 671" DBH
 672. 672" DBH
 673. 673" DBH
 674. 674" DBH
 675. 675" DBH
 676. 676" DBH
 677. 677" DBH
 678. 678" DBH
 679. 679" DBH
 680. 680" DBH
 681. 681" DBH
 682. 682" DBH
 683. 683" DBH
 684. 684" DBH
 685. 685" DBH
 686. 686" DBH
 687. 687" DBH
 688. 688" DBH
 689. 689" DBH
 690. 690" DBH
 691. 691" DBH
 692. 692" DBH
 693. 693" DBH
 694. 694" DBH
 695. 695" DBH
 696. 696" DBH
 697. 697" DBH
 698. 698" DBH
 699. 699" DBH
 700. 700" DBH
 701. 701" DBH
 702. 702" DBH
 703. 703" DBH
 704. 704" DBH
 705. 705" DBH
 706. 706" DBH
 707. 707" DBH
 708. 708" DBH
 709. 709" DBH
 710. 710" DBH
 711. 711" DBH
 712. 712" DBH
 713. 713" DBH
 714. 714" DBH
 715. 715" DBH
 716. 716" DBH
 717. 717" DBH
 718. 718" DBH
 719. 719" DBH
 720. 720" DBH
 721. 721" DBH
 722. 722" DBH
 723. 723" DBH
 724. 724" DBH
 725. 725" DBH
 726. 726" DBH
 727. 727" DBH
 728. 728" DBH
 729. 729" DBH
 730. 730" DBH
 731. 731" DBH
 732. 732" DBH
 733. 733" DBH
 734. 734" DBH
 735. 735" DBH
 736. 736" DBH
 737. 737" DBH
 738. 738" DBH
 739. 739" DBH
 740. 740" DBH
 741. 741" DBH
 742. 742" DBH
 743. 743" DBH
 744. 744" DBH
 745. 745" DBH
 746. 746" DBH
 747. 747" DBH
 748. 748" DBH
 749. 749" DBH
 750. 750" DBH
 751. 751" DBH
 752. 752" DBH
 753. 753" DBH
 754. 754" DBH
 755. 755" DBH
 756. 756" DBH
 757. 757" DBH
 758. 758" DBH
 759. 759" DBH
 760. 760" DBH
 761. 761" DBH
 762. 762" DBH
 763. 763" DBH
 764. 7



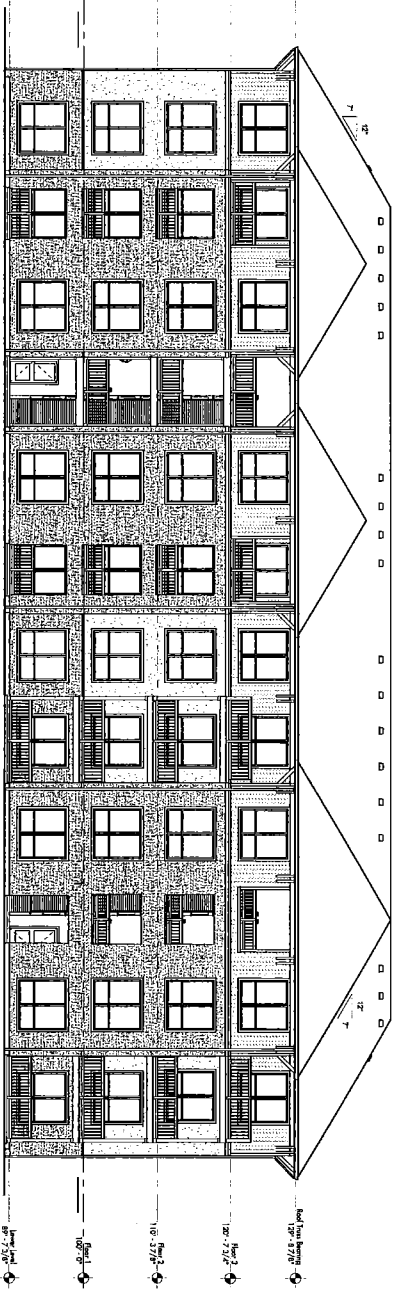
G12 28 Unit Building - Left Side Elevation
1/8" = 1'-0"



G6 28 Unit Building - Right Side Elevation
1/8" = 1'-0"



D12 28 Unit Building - Front Elevation
1/8" = 1'-0"



A12 28 Unit Building - Rear Elevation
1/8" = 1'-0"

Handwritten notes:
"Sullivan Bruck Architects"
"Approved by City of Columbus"
"August 16, 2014"
"A 2014-17, 2017"

SULLIVAN BRUCK
ARCHITECTS

200 North High Street
Columbus, Ohio 43215
761.414.9900
Fax: 614.444.9009
www.sullivanbruck.com

Scioto Ridge
Apartments

Columbus, Ohio

CASTO
Casto Communities

Date of Issue: 2014-03-26
Issued for: PERMITS
Revision History:

Project Number: 1000700
Exterior Elevations

28-A2.01

**STAFF REPORT
DEVELOPMENT COMMISSION
ZONING MEETING
CITY OF COLUMBUS, OHIO
FEBRUARY 13, 2014**

- 5. APPLICATION: Z13-058 (13315-00000-00812)**
Location: **5450 RIVERSIDE DRIVE (43017)**, being 11.1± acres located on the east side of Riverside Drive, 83± feet north of Hayden Road (590-195673, 590-258066, 590-143276 & 590-195672; Northwest Civic Association).
Existing Zoning: CPD, Commercial Planned Development and AR-12, Apartment Residential Districts.
Request: L-ARLD, Limited Apartment Residential District.
Proposed Use: Multi-unit residential development.
Applicant(s): Casto Communities; c/o Jeff Brown, Atty.; Smith & Hale, LLC; 37 West Broad Street, Suite 725; Columbus, OH 43215.
Property Owner(s): Firwood Co. Ltd.; 4177 Maystar Way; Hilliard, OH 43026.
Planner: Tori Proehl, 645-2749, vjproehl@columbus.gov

BACKGROUND:

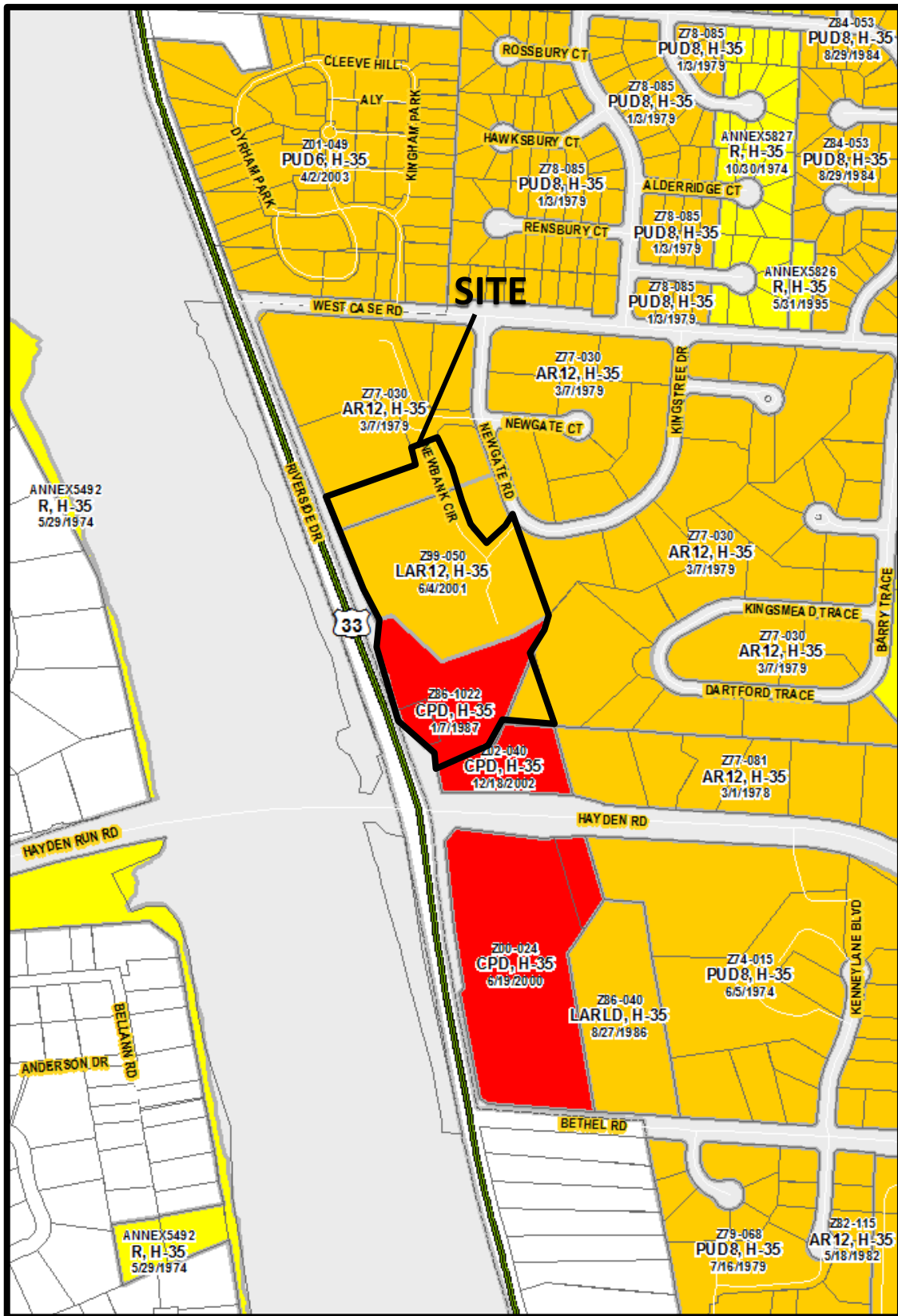
- The 11± acre site consists of four parcels: a vacant 9.0 acre tract zoned L-AR-12, Limited Apartment Residential District and CPD, Commercial Planned Development District; a 0.32 acre parcel developed with retail in the CPD, Commercial Planned Development District; and two vacant parcels totaling 1.79 acres that are zoned in the AR-12, Apartment Residential District. The applicant requests rezoning to the L-ARLD, Limited Apartment Residential District to permit the development of 152 multi-family units at a density of 13.7 units per acre.
- To the north are two multi-unit residential buildings, having four and five stories, zoned in the unrestricted AR-12, Apartment Residential District. To the northeast is a two-unit residential development in the AR-12, Apartment Residential District. To the west is the Scioto River, and to the south is a retail landscape supply business in the CPD, Commercial Planned Development District.
- The current L-AR-12, Limited Apartment Residential District allows a density of 12.1 units per acre and provides no commitment to a site plan or building elevations. The only limitations are a 60' parking setback and a 100' building setback from Riverside Drive, and a maximum height of light poles of 18'. The current CPD, Commercial Planned Development Districts permit all C-4, Commercial District uses. The requested L-ARLD, Limited Apartment Residential District would permit the development of 152 multi-family units at a density of 13.7 units per acre. The proposal includes landscaping and tree planting commitments within the 25' setback from the east property line in consideration of the adjacent two-unit dwellings, parking and building setbacks of 100' from Riverside Drive, a tree preservation area in the southeast corner of the site, and a detailed site plan and building elevations committing to design, materials, and locations of garages and buildings, and a landscaping plan. Due to the topography of the site, the five proposed multi-unit

residential buildings will have four stories facing west toward the Riverside Drive frontage and three stories facing east beyond which are garages and a landscaped 25' setback from the east property line.

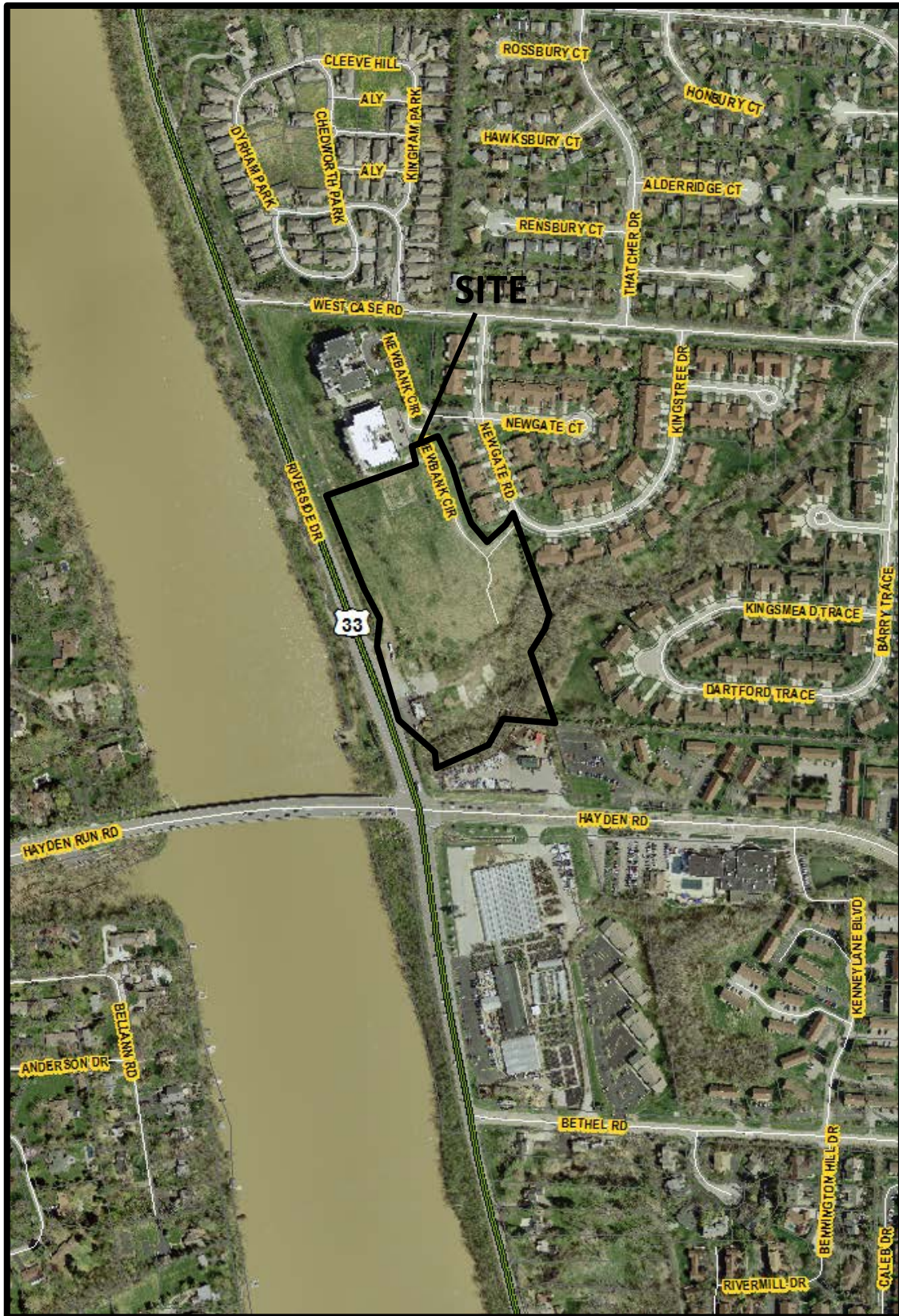
- The site is located within the planning area of the *Northwest Plan* (2007). The Plan provides no specific land use recommendation for this site but provides a general recommendation that infill residential development be “consistent and compatible with the land use and density of the surrounding area.” The Planning Division has evaluated this proposal in the context of this recommendation and believes that the proposed density should not exceed 12.1 units per acre. Approximately 630' to the south exists a L-ARLD, Limited Apartment Residential District that was established in 1986. That multi-unit residential development consists of 80 units at a density of 16.9 units per acre, so there are comparable densities in the area. That rezoning was supported by Staff. Therefore, Staff has determined that this proposal, at the density of 13.7 units per acre, is compatible with the surrounding residential development.
- The site is located within the boundaries of the Northwest Civic Association whose recommendation is for disapproval of the requested L-ARLD, Limited Apartment Residential District.
- The *Columbus Thoroughfare Plan* identifies Riverside Drive as a 4-2D arterial requiring a minimum of 60 feet of right-of-way from centerline. Additionally, access to Riverside Drive is under the jurisdiction of the Ohio Department of Transportation and additional material has been submitted.

CITY DEPARTMENTS' RECOMMENDATION: Approval.

The requested L-ARLD, Limited Apartment Residential District will allow a 152-unit residential complex to be developed on an approximate 11 acre site. Staff has determined that this proposal is compatible with the surrounding residential development as recommended by the *Northwest Plan*, noting that the requested 13.7 units per acre represents a negligible difference of approximately 20 dwelling units more than a density of 12.1 units per acre allowed by the AR-12, Apartment Residential District. The requested L-ARLD, Limited Apartment Residential District also replaces nearly four acres of more intense commercial zoning with a consolidated residential development that incorporates substantial specificity and development standards in consideration of adjacent residential uses. The limitation text, site plan, elevations and landscaping plans provide specific guidelines on which development will occur. Therefore, Staff recommends approval of the proposed rezoning.



Z13-058
5450 Riverside Drive
Approximately 11.1 acres
Request: Rezoning from CPD, Commercial Planned
Development District and AR-12, Apartment Residential
District to L-ARLD, Limited Apartment Residential District



Z13-058

5450 Riverside Drive

Approximately 11.1 acres

Request: Rezoning from CPD, Commercial Planned Development District and AR-12, Apartment Residential District to L-ARLD, Limited Apartment Residential District



Post Office Box 20134
Columbus, OH 43220

*Community Enrichment
Through Participation!*

February 3, 2014

Development Commission
c/o Tori Proehl (vjproehl@columbus.gov)
City of Columbus Department of Development
757 Carolyn Avenue
Columbus OH 43224

Re: Z13-058; 5450 Riverside Drive

Dear Chairman Kirkpatrick and Commissioners:

The Northwest Civic Association board of trustees voted unanimously to disapprove the applicant's request for rezoning at our January 8 meeting, 7-to-0.

We had to move our meeting to Centennial High School's auditorium to accommodate the 130 local residents, by my count, who attended. Numerous condo and duplex owners and the presidents of three neighborhood associations spoke against the development. They submitted a petition, signed by over 250 residents, strongly urging us to oppose the development for many reasons, including:

- Increased density: current allowable is 12 units per acre, and this application is for 13.7 (16.9 if you exclude the commercial property acreage from the denominator)
- Use inconsistent with area: rental apartments v. luxury condominiums/duplexes
- Traffic impact:
 - on Newgate and Kingtree, two quiet streets that together form a duplex loop off of West Case through a neighborhood of mostly retirees, would serve as primary egress for 1200+ trips per day to and from the new development
 - on West Case at the Riverside light (please see note 1)
- Aesthetics, both consistency with existing development and visibility from the Hayden Run bridge, an opportunity to welcome travelers entering Columbus
- Safety, e.g., emergency vehicle access, school bus access, and security problems associated more with apartments than with duplexes or condos
- Property values, since both the additional traffic and the nearby apartments will tend to have a downward pressure on resale value (please see note 2)
- Soil cleanup of five in-ground oil tanks in the southwest corner of the development, the site of a former gas station that closed in '72, seven years before EPA pollution standards were enacted, and wildlife impact along the creek to the south

Of all the letters and emails I received from residents on this matter, I found two to be especially interesting (attached). Dick Meyer estimates that the lower tax revenues from the surrounding area, resulting from lower property values, would more than offset additional tax revenues from the development. Bill Kientz Sr. uses information from Casto and some estimates of his own to show that building half as many duplex units as proposed rental units would yield greater profit.

There are other viable options for this site, and some problems to be worked out, but this development proposal does not fit with the site's constraints, nor with the community.

I urge Commissioners to support the residents and disapprove the applicant's request.

Sincerely,



John Ehlers
President

Note 1: Those who travel westbound on West Case approaching the Riverside light routinely suffer 6-minute (2-cycle) delays. Problems there have existed for well over a decade. In 2003, when the River Highlands development to the north of West Case was being approved, several traffic-related commitments by the City and the developer were codified (ordinance Z01-049, items 2.B.3 and 2.B.4, as amended 03/03/03), yet never carried-out. Since then, the East Bank high-rise luxury condo buildings were built within a few hundred yards of the light, and traffic problems worsened. This project would add another 152 units of rental housing and an estimated 1200+ trips per day (at 8 trips/unit/day) to that load.

Note 2: To assure high property values, all duplex owners living on Newgate and Kingtree committed to a covenant when they bought their units that they not offer them for rent. Building 152 rental units next door, and then funneling the bulk of the resulting traffic from those units down their street, forces a significant, undesirable effect upon the character of their community.



COLUMBUS DEVELOPMENT COMMISSION

Basis for Recommendation

ORD # 0983-2014, Z13-058, Page 9 of 10
Date: February 13, 2014

5

Application #: Z13-058	Requested: L-ARLD	Address: 5450 Riverside Drive (43017)					
# Hearings:	Length of Testimony: 6:28 →	Staff Position: <input checked="" type="checkbox"/> Approval <input type="checkbox"/> Disapproval <input type="checkbox"/> Conditional Approval					
# Speakers Support: Opposition:	Development Commission Vote: <input type="checkbox"/> Yes <input type="checkbox"/> No <input type="checkbox"/> Abstain	Area Comm/ Civic Assoc: <input type="checkbox"/> Approval <input checked="" type="checkbox"/> Disapproval <input type="checkbox"/> Conditional Approval					
Position Y=Yes N=No (write out ABSENT or ABSTAIN)	Fitzpatrick	ABSENT Ingwersen	NO Anderson	Y Cooley	ABSENT Conroy	Y Onwukwe	Y Coe
+ = Positive or Proper - = Negative or Improper	<input type="checkbox"/>	<input type="checkbox"/>	<input type="checkbox"/>	<input type="checkbox"/>	<input type="checkbox"/>	<input type="checkbox"/>	<input type="checkbox"/>
Land Use	+		+	+		✓	+
Use Controls							
Density or Number of Units			-			+	
Lot Size							
Scale							
Environmental Considerations				+		✓	
Emissions							
Landscaping or Site Plans							
Buffering or Setbacks							
Traffic Related Commitments			-	-		✓	-
Other Infrastructure Commitments						✓	
Compliance with City Plans			-			✓	
Timeliness of Text Submission							
Area or Civic Assoc. Recommendation			-				
Governmental or Public Input							
MEMBER COMMENTS:							
FITZPATRICK: LAND USE IS APPROPRIATE IN BALANCE WITH OTHERWISE ZONED RESIDENTIAL DEVELOPMENT. DENSITY IN THIS CASE DOES NOT RESULT IN UNACCEPTABLE INTENSITY. SUBMITTED COMMITMENTS APPEAR TO BE EFFECTIVE. REMOVAL OF COMMERCIAL USE IS AN IMPROVEMENT. GATE IS NEEDED ON EXISTING CONVEYOR !!!							
INGWERSEN:							
ANDERSON: The Northside Plan should be respected w/ regard to density + exceptions to the plan simply lead to later exceptions. Traffic problems will intensify for the surrounding established neighborhoods. Some improvements could help, but not density.							
COOLEY: There can be significant AMELIORATION in addition to that required, and it would be my expectation that the AMELIORATION process will continue. Noted, ultimately the land use is appropriate.							
CONROY:							
ONWUKWE: It is density vs intensity. The density is appropriate for the site. The applicant had endeavored to overcome the concerns of the citizens.							
COE: I believe the land use is consistent w/ community, the density is consistent. Community is opposed but didn't offer specific changes to work together. Site plan was very detailed.							



REZONING APPLICATION

City of Columbus, Ohio • Department of Building & Zoning Services
757 Carolyn Avenue, Columbus, Ohio 43224 • Phone: 614-645-7433 • www.columbus.gov

PROJECT DISCLOSURE STATEMENT

Parties having a 5% or more interest in the project that is the subject of this application.
THIS PAGE MUST BE FILLED OUT COMPLETELY AND NOTARIZED. Do not indicate 'NONE' in the space provided.

APPLICATION # 213-058

STATE OF OHIO
COUNTY OF FRANKLIN

Being first duly cautioned and sworn (NAME) Jeffrey L. Brown
of (COMPLETE ADDRESS) 37 West Broad Street, Suite 725, Columbus, OH 43215
deposes and states that (he/she) is the APPLICANT, AGENT or DULY AUTHORIZED ATTORNEY FOR SAME and the following is a list of all persons, other partnerships, corporations or entities having a 5% or more interest in the project which is the subject of this application in the following format:

Name of business or individual
Business or individual's address
Address of corporate headquarters
City, State, Zip
Number of Columbus based employees
Contact name and number

1. Casto Communities 250 Civic Center Drive, Suite 500 Columbus, OH 43215 Justin Bird . - 614-744-2000 200 employees	2. Firwood Co. Ltd. 4177 Maystar Way Hilliard, OH 43026 0 employees
3.	4.

Check here if listing additional parties on a separate page.

SIGNATURE OF AFFIANT

Subscribed to me in my presence and before me this 4th day of November, in the year 2013

SIGNATURE OF NOTARY PUBLIC

My Commission Expires:

9/4/15

This Project Disclosure Statement expires six months after date of notarization.



Seal Here
Natalie C. Timmons
Notary Public, State of Ohio
My Commission Expires 09-04-2015

PLEASE NOTE: incomplete information will result in the rejection of this submittal.
Applications must be submitted by appointment. Call 614-645-4522 to schedule.
Please make all checks payable to the Columbus City Treasurer