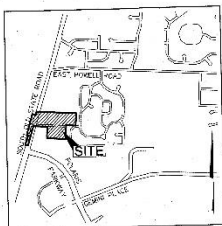
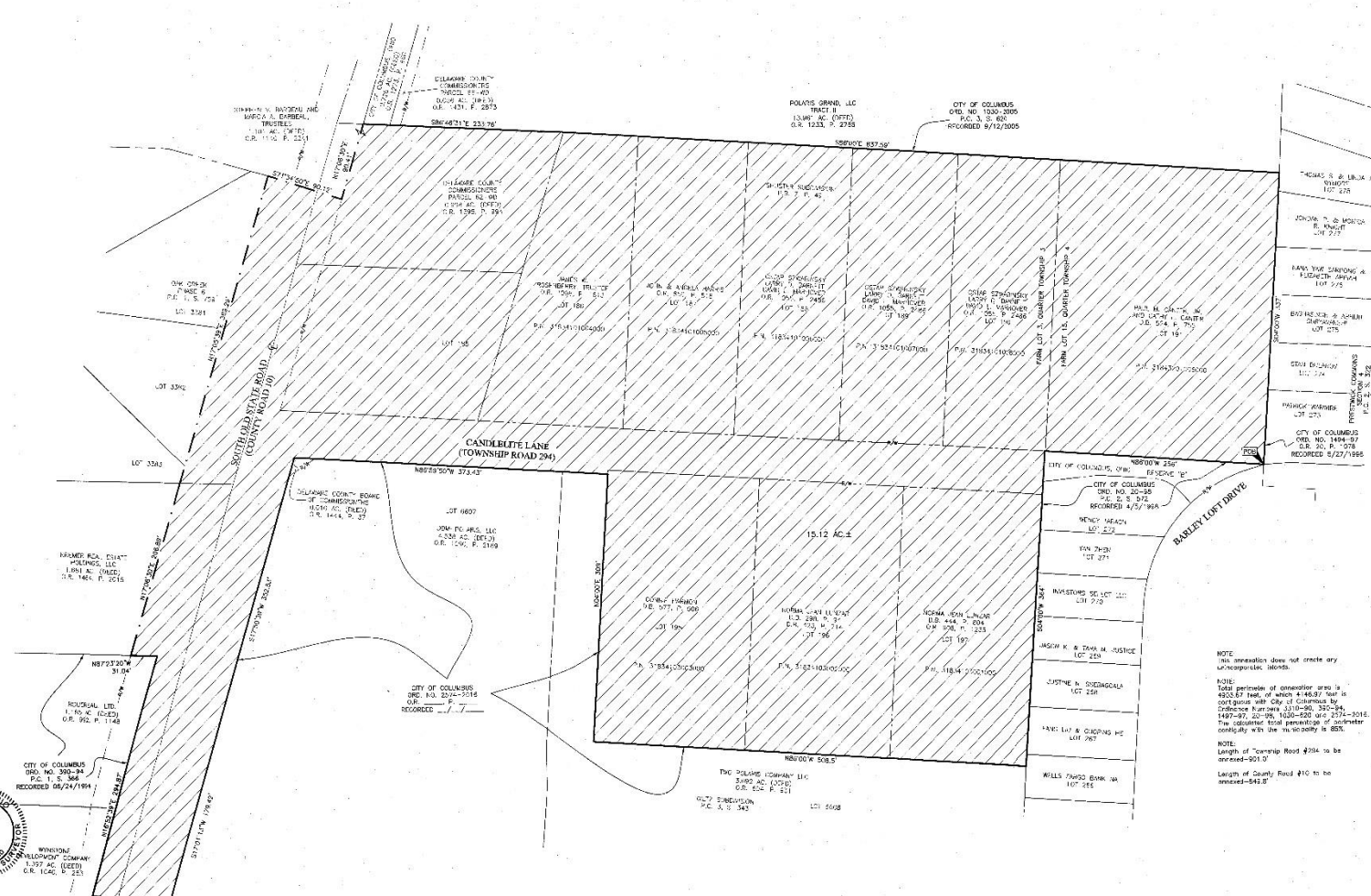


AN16-010
 Orange Township (15.12 ± acres)
 Plat Map

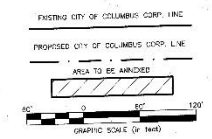
**MAP OF TERRITORY TO BE ANNEXED
 TO THE CITY OF COLUMBUS, FROM ORANGE TOWNSHIP**
 FARM LOT 3, QUARTER TOWNSHIP 3 AND FARM LOT 15, QUARTER TOWNSHIP 4, TOWNSHIP 3, RANGE 18
 UNITED STATES MILITARY LANDS
 TOWNSHIP OF ORANGE, COUNTY OF DELAWARE, STATE OF OHIO



LOCATION MAP AND BACKGROUND DRAWING
 NOT TO SCALE



The information shown herein is based on the same information shown in the recorded documents referenced herein, and found in the Recorder's Office, Delaware County, Ohio.



MATTHEW A. KIRK
 PROFESSIONAL SURVEYOR
 No. 87865
 WASHINGTON
 DELAWARE COUNTY, OHIO
 1.97 AC (USE)
 O.R. 1146, P. 221

NOTE:
 This annexation does not create any unincorporated islands.

NOTE:
 Total perimeter of annexation area is 4252.84 feet, of which 4163.07 feet is contiguous with City of Columbus by Ordinance Map No. 311090, 300-98, 1487-97, 22-98, 1030-820 and 2274-3016. The cumulative total perimeter of ordinance contiguous with the municipality is 885.

NOTE:
 Length of Township Road #294 to be annexed-901.0'.
 Length of County Road #10 to be annexed-843.0'.

Info: February 21, 2017
 Scale: 1" = 60'
 Job No: 2016-1263
 Sheet: 1 of 1
 REV. SHEETS

NO.	DATE	DESCRIPTION
1	2/21/17	DATE SHEET ISSUED

County Engineer
 Delaware County, Ohio
 I hereby certify that this plat is a true and correct copy of the original as shown to me by the Surveyor.
 CHRIS L. BARKLEY, P.E.
 County Engineer
 Date: 2/21/17