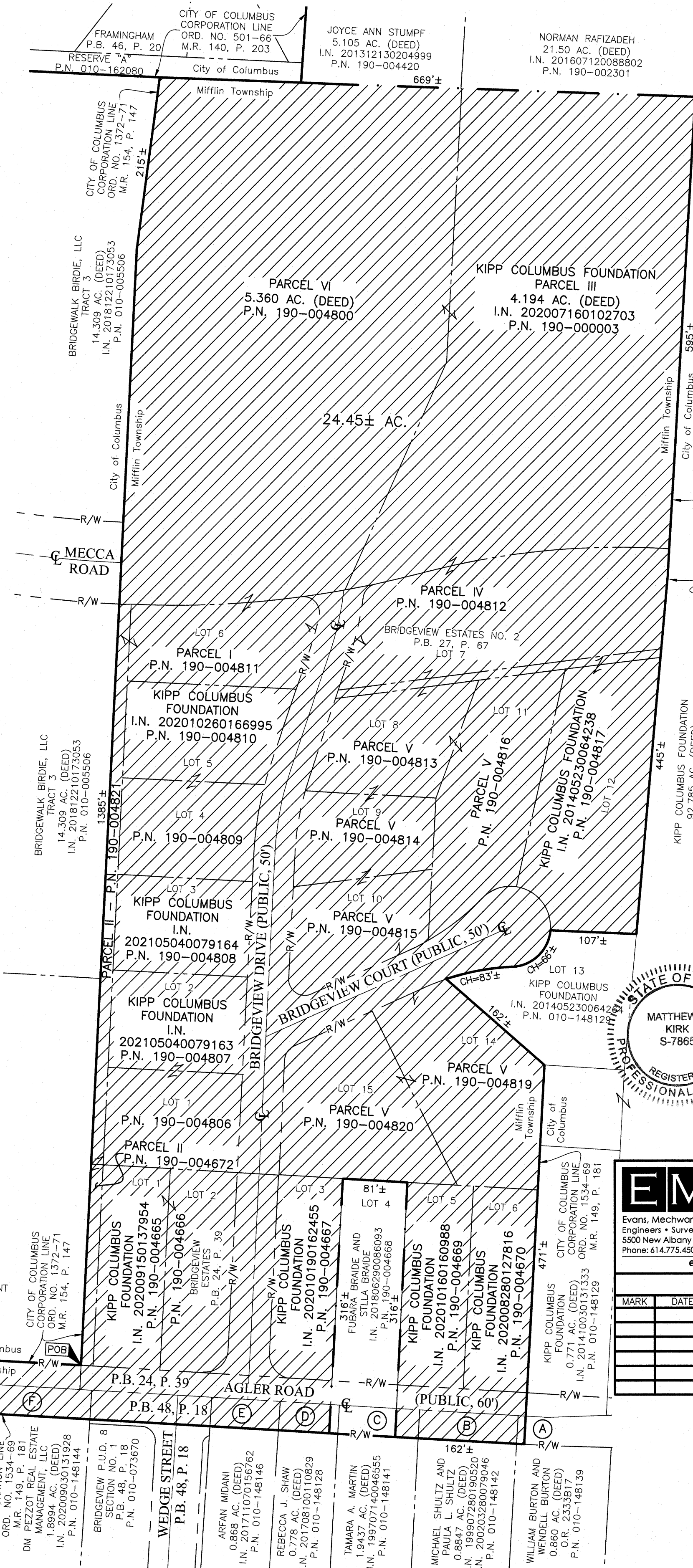


PROPOSED ANNEXATION OF 24.45± ACRES FROM MIFFLIN TOWNSHIP TO THE CITY OF COLUMBUS

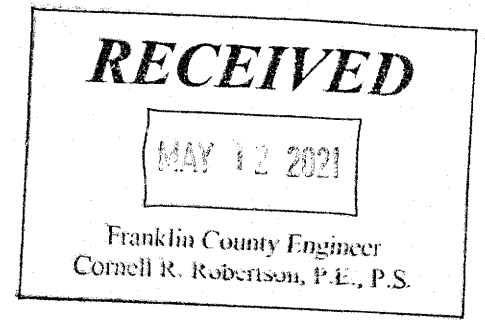
QUARTER TOWNSHIP 2, TOWNSHIP 1, RANGE 17
UNITED STATES MILITARY DISTRICT

TOWNSHIP OF MIFFLIN, COUNTY OF FRANKLIN, STATE OF OHIO

- (A) FRANKLIN COUNTY COMMISSIONERS PARCEL 99WD 0.1028 AC. (DEED) O.R. 31175G12
- (B) FRANKLIN COUNTY COMMISSIONERS PARCEL 98WD 0.0993 AC. (DEED) O.R. 30737F17
- (C) FRANKLIN COUNTY COMMISSIONERS PARCEL 97WD 0.0788 AC. (DEED) O.R. 30452H02
- (D) FRANKLIN COUNTY COMMISSIONERS PARCEL 96WD 0.0642 AC. (DEED) O.R. 30737F14
- (E) FRANKLIN COUNTY COMMISSIONERS PARCEL 95WD 0.0704 AC. (DEED) O.R. 30086E17
- (F) FRANKLIN COUNTY COMMISSIONERS PARCEL 93WD 0.1046 AC. (DEED) O.R. 30239B01
- (G) FRANKLIN COUNTY COMMISSIONERS PARCEL 92WD 0.0522 AC. (DEED) O.R. 30239B07
- (H) FRANKLIN COUNTY COMMISSIONERS PARCEL 91WD 0.0522 AC. (DEED) O.R. 30086F15
- (I) FRANKLIN COUNTY COMMISSIONERS PARCEL 90WD 0.1046 AC. (DEED) O.R. 30239B04
- (J) FRANKLIN COUNTY COMMISSIONERS PARCEL 89WD 0.2096 AC. (DEED) O.R. 30792E01
- (K) DM PEZZOT REAL ESTATE MANAGEMENT, LLC 1.9518 AC. (DEED) I.N. 202009030131928 P.N. 010-148147
- (L) DOUGLAS MARCHANT, KEFFREY MARCHANT, RICHARD P. MARCHANT, MICHAEL MARCHANT AND MICHELLE KNIGHT 1.9518 AC. (DEED) I.N. 201106210077476 P.N. 010-148132



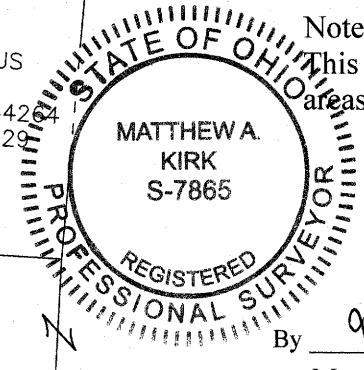
ANNEXATION
PLAT & DESCRIPTION
ACCEPTABLE
CORNELL R. ROBERTSON, P.E., P.S.,
FRANKLIN COUNTY ENGINEER
By FAM/LH Date 5/12/2021



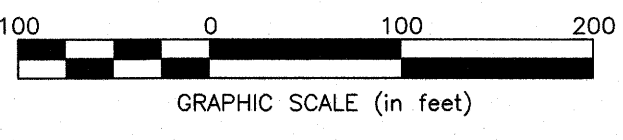
AREA TO BE ANNEXED
FROM MIFFLIN TOWNSHIP TO THE CITY OF COLUMBUS
PROPOSED CITY OF COLUMBUS CORPORATION LINE
EXISTING CITY OF COLUMBUS CORPORATION LINE

Contiguity Note:
Total perimeter of annexation area is 6718 feet, of which 5448 feet is contiguous with the City of Columbus by Ordinance Number 1372-71, Ordinance Number 1534-69, Ordinance Number 1954-73 and Ordinance Number 501-66, giving 81% perimeter contiguity.

Note:
This annexation does not create islands of unincorporated areas within the limits of the area to be annexed.



By Matthew A. Kirk Date 6 MAY 21
Matthew A. Kirk
Professional Surveyor No. 7865
mkirk@emht.com



EMHT
Evans, Mechwart, Hambleton & Tilton, Inc.
Engineers • Surveyors • Planners • Scientists
5500 New Albany Road, Columbus, OH 43054
Phone: 614.775.4500 Toll Free: 888.775.3648
emht.com

Date: May 6, 2021
Scale: 1" = 100'
Job No: 2020-1263
Sheet: 1 of 1

| REVISIONS | | |
|-----------|------|-------------|
| MARK | DATE | DESCRIPTION |
| | | |
| | | |
| | | |

1:20201263-VS-ANNX-01.DWG plotted by KIRK, MATTHEW on 5/6/2021 2:08:34 PM last saved by JOMAS on 3/9/2021 11:21:54 AM