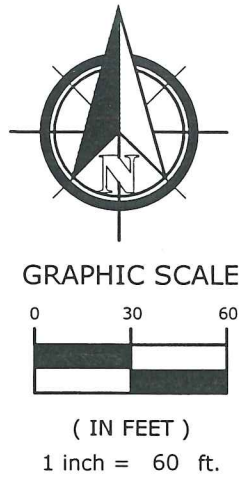
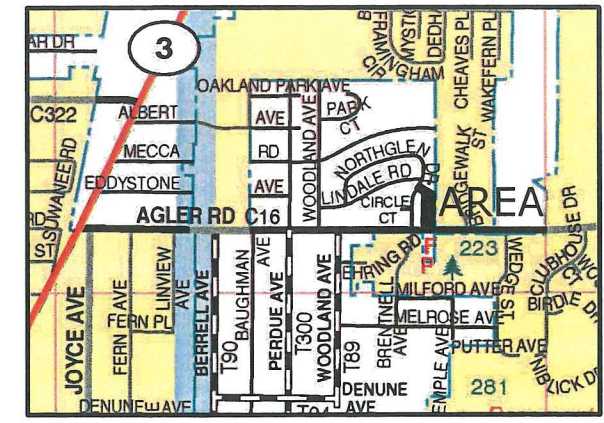
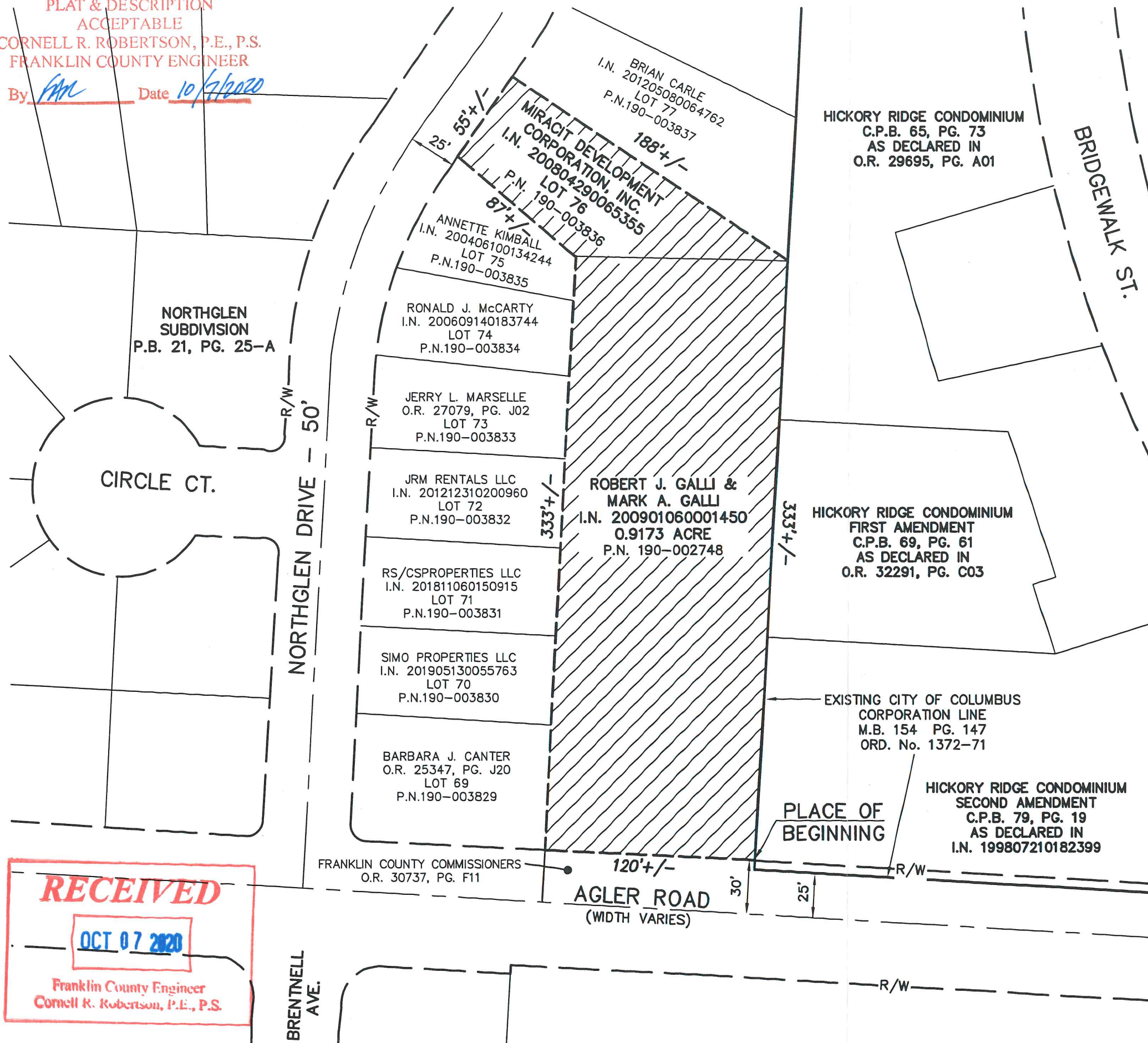


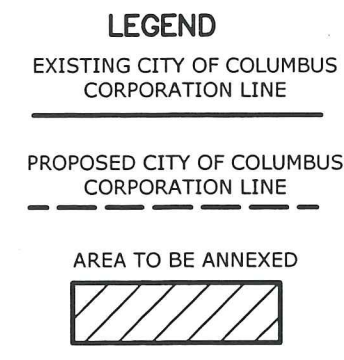
ANNEXATION
 PLAT & DESCRIPTION
 ACCEPTABLE
 CORNELL R. ROBERTSON, P.E., P.S.
 FRANKLIN COUNTY ENGINEER

By RAM Date 10/7/2020

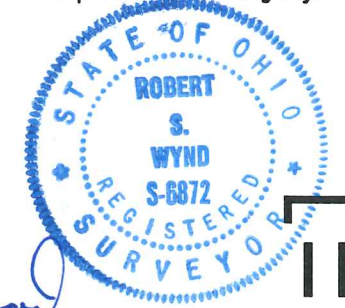


AREA SKETCH
 NO SCALE
ANNEXATION PLAT
STATE OF OHIO
COUNTY OF FRANKLIN
TOWNSHIP OF MIFFLIN
 LOCATED IN QUARTER TOWNSHIP 2,
 TOWNSHIP 1, RANGE 17,
 UNITED STATES MILITARY LANDS

1.2 ACRES ±
TO THE CITY OF COLUMBUS
 SEPTEMBER 25, 2020



Total perimeter of this annexation area is 1,116 feet of which 333 feet is contiguous with the existing City of Columbus corporation line, producing a 30% perimeter contiguity.



BY Robert S. Wynd
 Robert S. Wynd
 Registered Surveyor No. 6874

Date 10/7/20

RECEIVED
OCT 07 2020
 Franklin County Engineer
 Cornell R. Robertson, P.E., P.S.

J:\126849_MifflinFire2\7.0_Production\7.03_Design\02_Survey-Mapping\MIFFLIN FIRE ANNEX.dwg by:david.chiesa on 09/30/2020 @ 12:52:31 pm ~ © IBI Group